



Wennington Road, Southport. PR9 7TN. England
Tel: +44 (0)1704 518000 Fax: +44 (0)1704 518001
WEB SITE <http://www.unipartdorman.co.uk>
E MAIL address - dorman.info@unipartdorman.co.uk

Health and safety

Every effort has been made to ensure the accuracy of the information given in our publications, but in accordance with our policy of continually improving our products we reserve the right to modify designs and specifications whenever necessary. All equipment is designed to conform to relevant British and International standards. Every care is taken to ensure that, as far as reasonably practicable, it will perform without risk to health. It is essential that accepted codes of professional practice are followed in the assembly, installation and commissioning of the equipment. If in doubt with respect to any of these instructions, please consult Dorman before installing the device. Dorman reserves the right to vary any component part to meet the required specifications without prior notice.

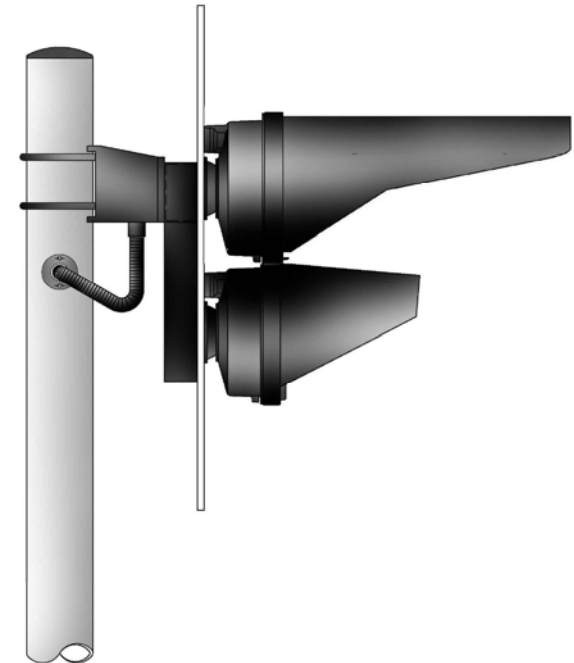


Certificate No. FM 14371

Dorman ref. No C64.65162 iss1

LED Wig Wag Extended visor Fitting Instructions

To be read before commencing
Operation



General.

In general before commencing any modifications, all local safety requirements affecting the safe working environment of the installation either directly or indirectly should be carried out.

The lamps should only be modified both electrically and mechanically, by staff deemed competent in these fields by their employer.

Before any work is carried out, the lamp does not need to be disconnected from the signal back plate or any supporting mounting plates.

Any modifications should be carried out in a clean & dry environment.

Method of removing existing visor

(1) Remove the M4x12 button head screws (A) located on either side of each module using 2.5mm Allen key provided.

NOTE: Dispose of screws and washers according to local regulations

(2) Slide the visor retaining ring (B) away from the module.

Note: Retain visor retaining ring for the fitting of the extended visor.

(3) Remove the visor (C) from the module and dispose of according to local regulations.

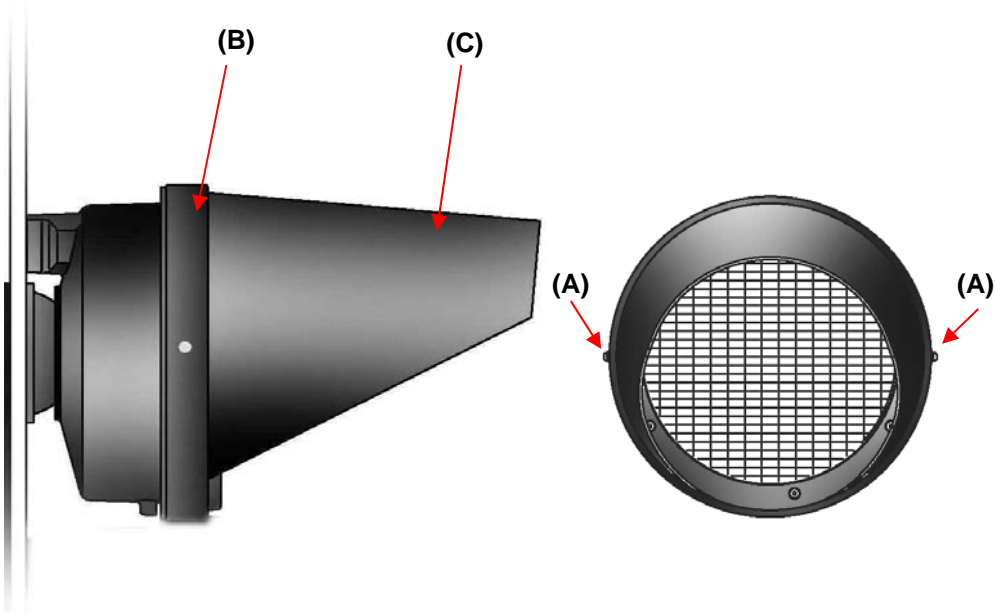


Illustration of side view of wig wag module

Illustration of front view of wig wag module

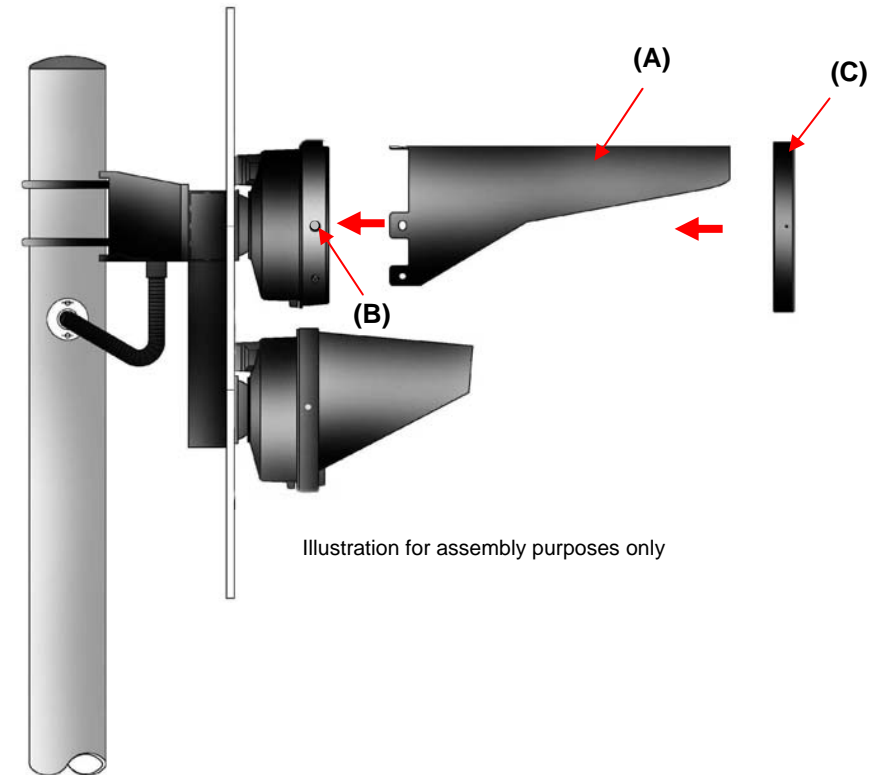
Method of fitting extended visor

(1) Orientate and position visor (A) over location lugs (B) situated around the front edge of the module.

(2) Assemble the visor retaining ring (C) over the visor and align with the threaded holes (B) in location lugs found either side of the module.

(3) Secure both visor retaining ring and visor with new screws and washers using the 2.5mm Allen key provided.

Note: Tighten the two M4 x 12 screws to 1.2Nm Torque.



Dorman Part Numbers:

D87.86031 - Wig Wag 535 Extended Visor Fitting Kit

Approvals

Product Acceptance No. PA05/05584