



DF11

Product Support Bulletin 1/16



DF11 Firmware Update

Introduction

This bulletin is designed to give you step by step instructions on updating the firmware in your DF11 Speed Feedback Sign equipped with the Datalogging function. It is designed to address a potential internal clock error which may put the wrong date stamp onto any data you download. The sign will continue to detect and display approaching vehicle speeds, providing valuable road safety information to drivers without this update as it only affects the downloaded traffic data.

With a good broadband connection to download the new files and with the sign within Bluetooth range, we anticipate this update should take no longer than 15 minutes to complete and you may wish to do this in conjunction with a scheduled battery charging session.

This support document assumes that you are conversant with pairing your laptop with the sign; please see your user manual for full instructions on how to pair the devices if you are doing this for the first time.

Updating Your Firmware

STEP 1:

- a) We recommend that you download the latest version of the Windows software you use for accessing the sign and its data using the link:

<http://houston-radar.com/HoustonRadarStatsAnalyzerUpgrade.msi>

(The Firmware update will work with all versions of the Stats Analyser if you don't wish to update this time)

- b) Download the new firmware using the link below and if it doesn't download automatically into a Library folder such as Documents, save it to a convenient location your computer such as your Desktop:

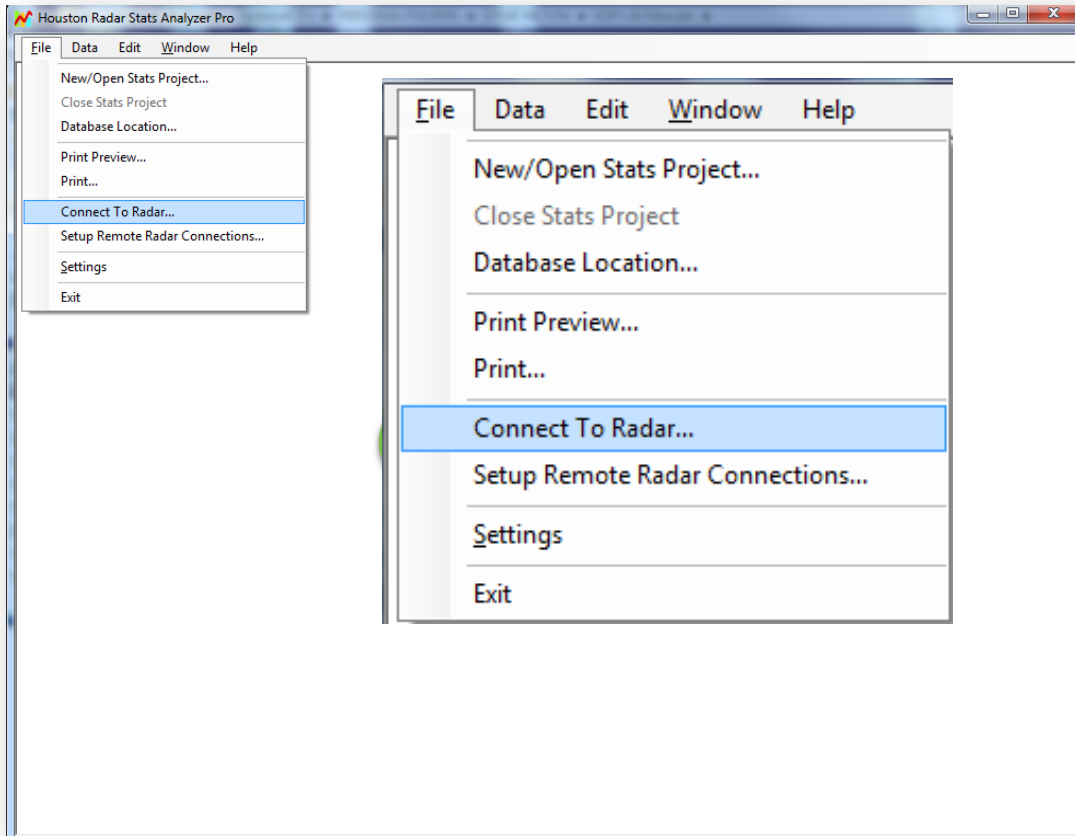
http://www.houston-radar.com/firmware/ss300b02_v156.frm

Once each file has downloaded double click the icon and follow the prompts to install it on your Laptop.

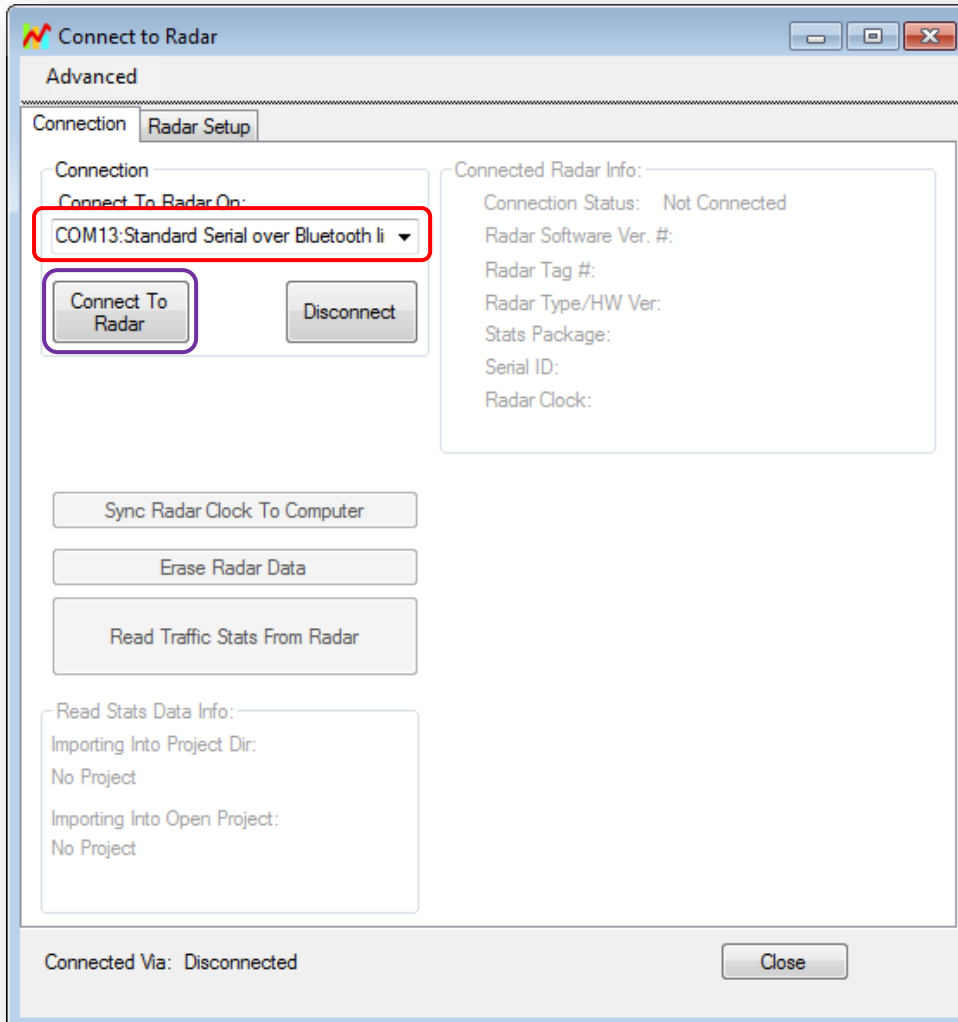
Please note, if your IT provider has blocked access to software downloads on your device, please contact your Administrator for advice on allowing the update to have access permissions.

STEP 2:

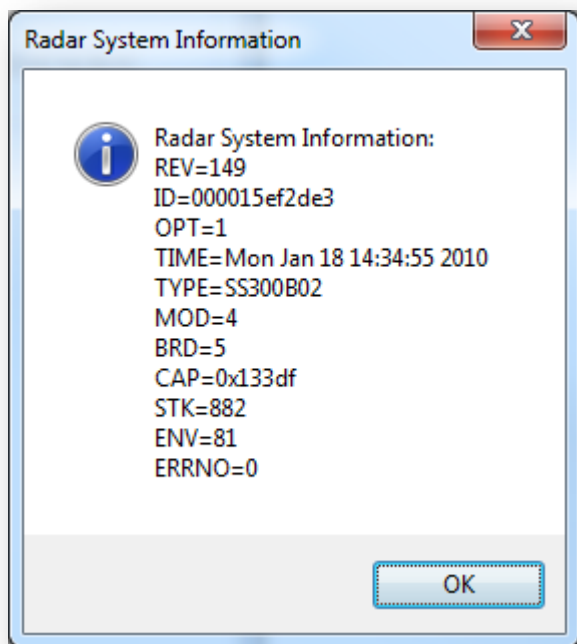
Make sure that your sign is turned on and your laptop is connected to the device over the Bluetooth interface. Start the stats analyser and connect to the radar (File->Connect to Radar...) as usual.



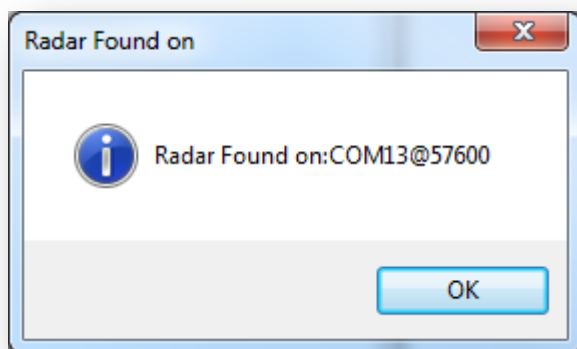
Choose the COM port from the drop down menu that corresponds to the Bluetooth link with your sign and then click "Connect to Radar".



The Radar System Information popup box will appear.



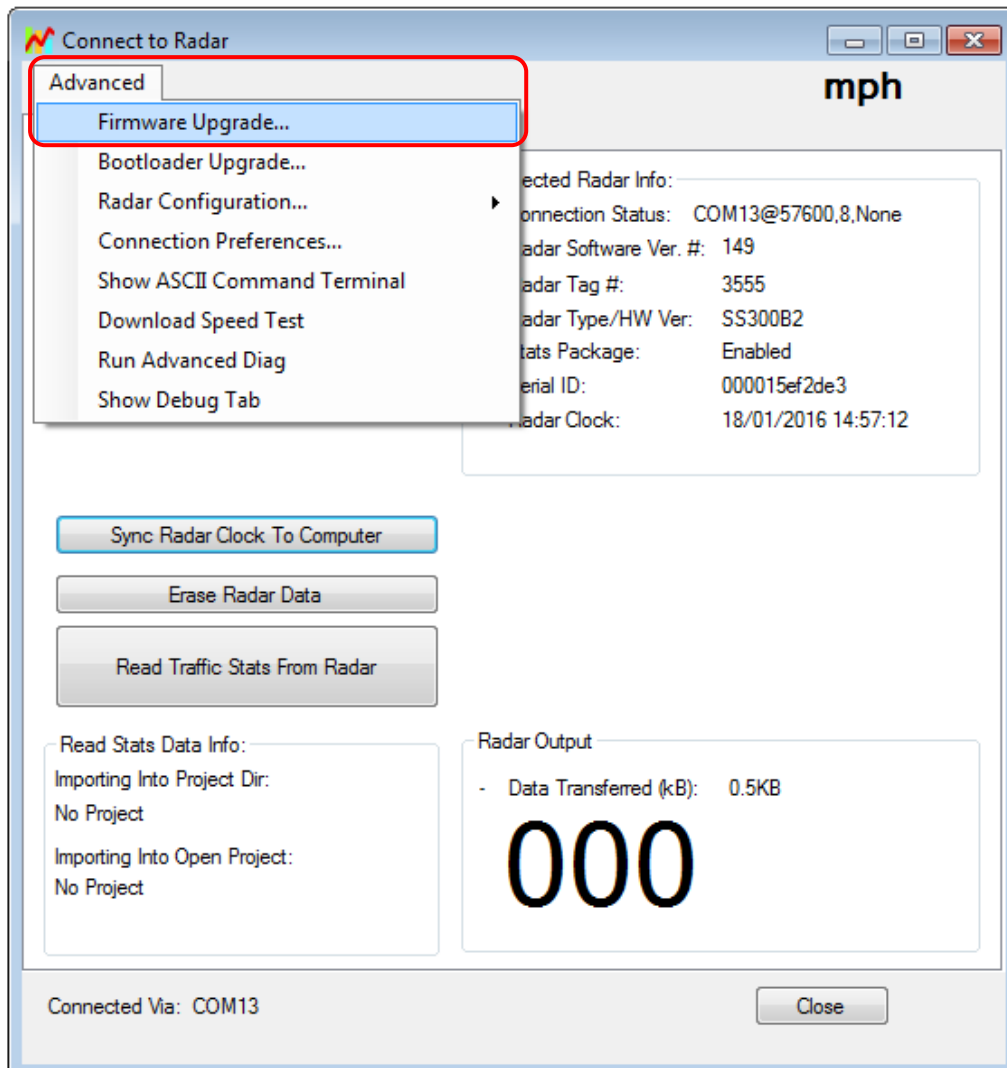
Click on OK. Your PC or Laptop is now connected to your DF11.



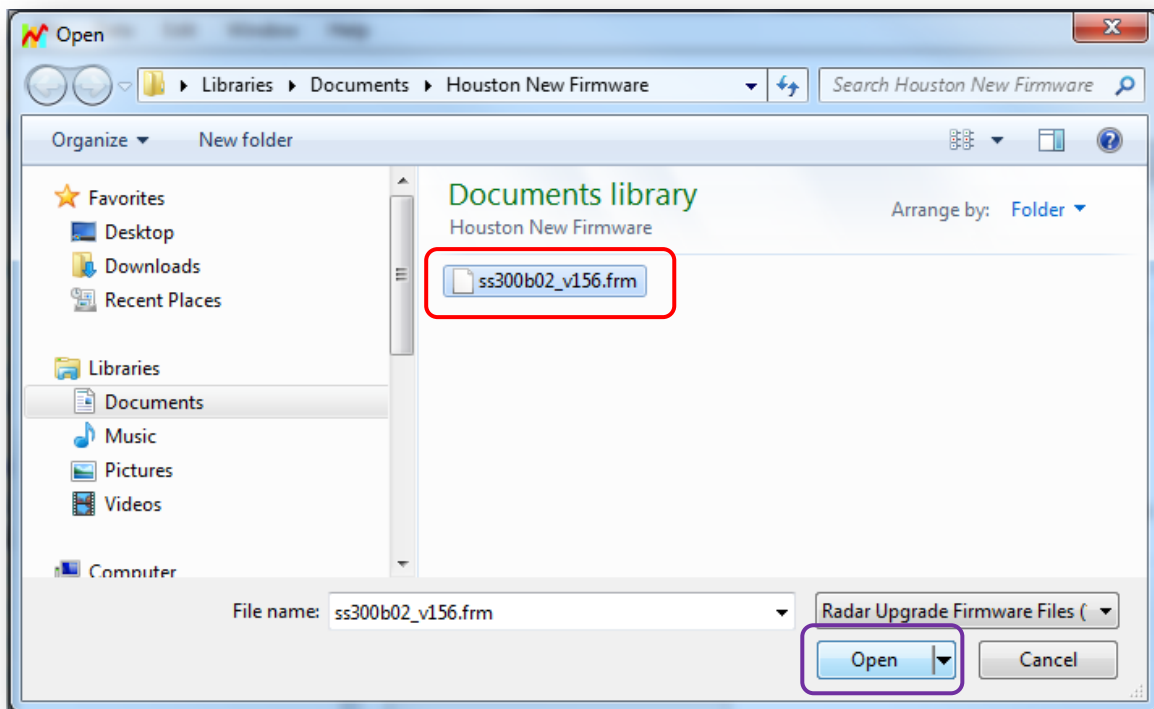
Click OK again...

Uploading the Firmware Update to the Sign

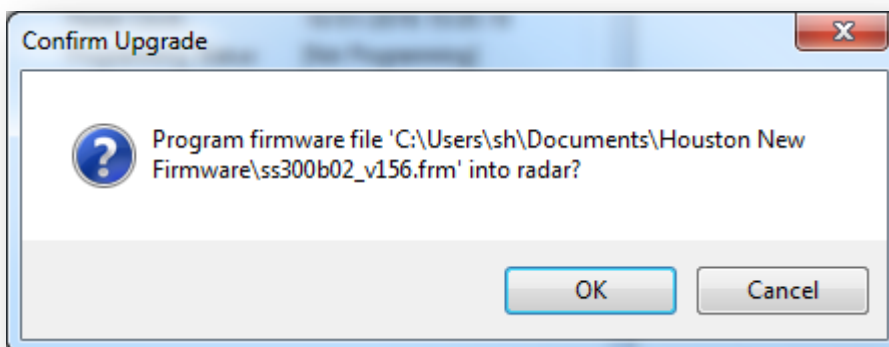
Program the new radar firmware (ss300b02_v156.frm) via the *Advanced->Firmware Upgrade* option. Firmware programming takes only about a minute.



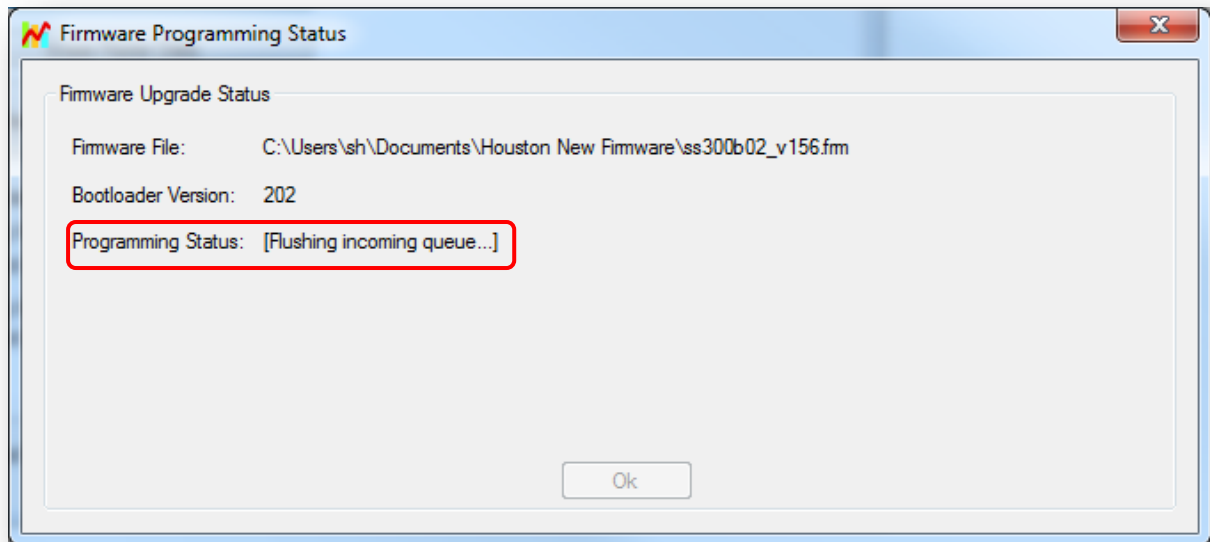
Locate the folder where you have downloaded the Houston firmware (**ss300b02_v156.frm**) to and select it then click open.



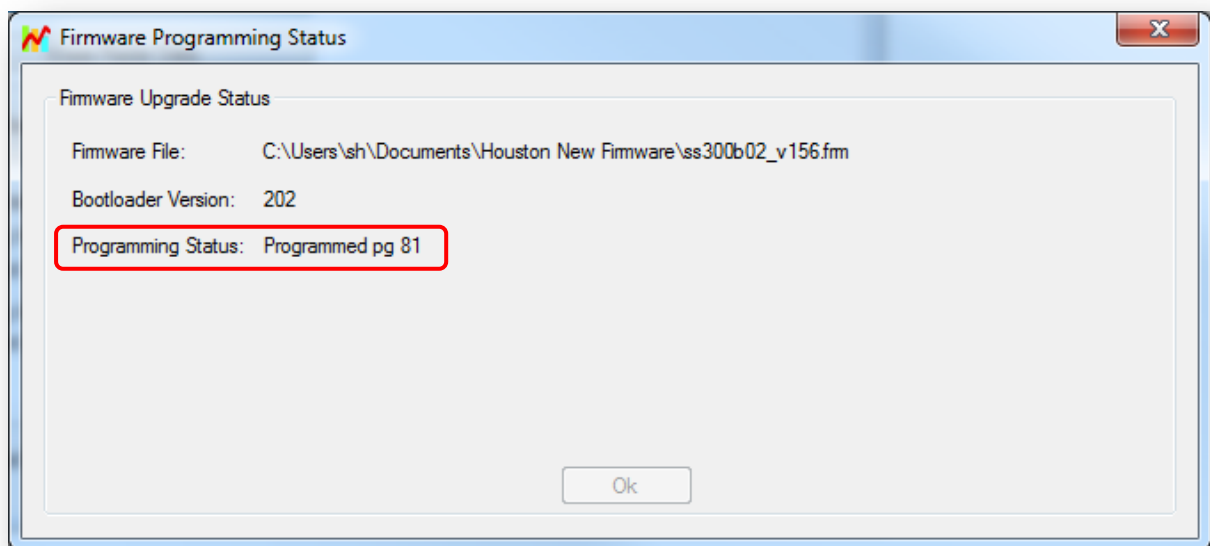
The following box will appear, click **OK** to proceed or **Cancel** to end the upgrade.



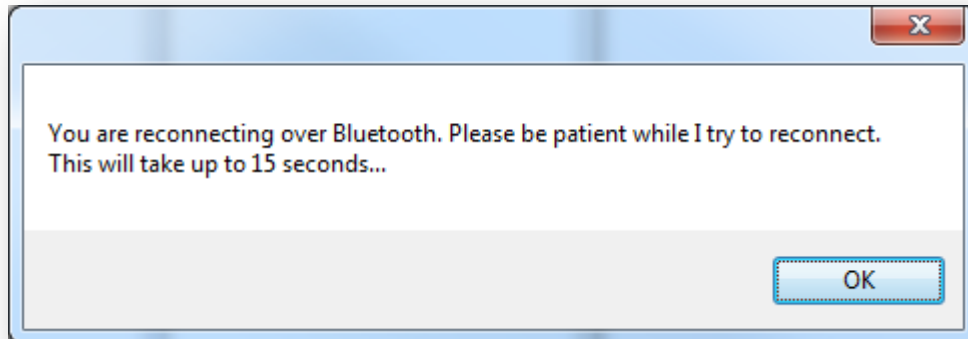
The Following box will appear...



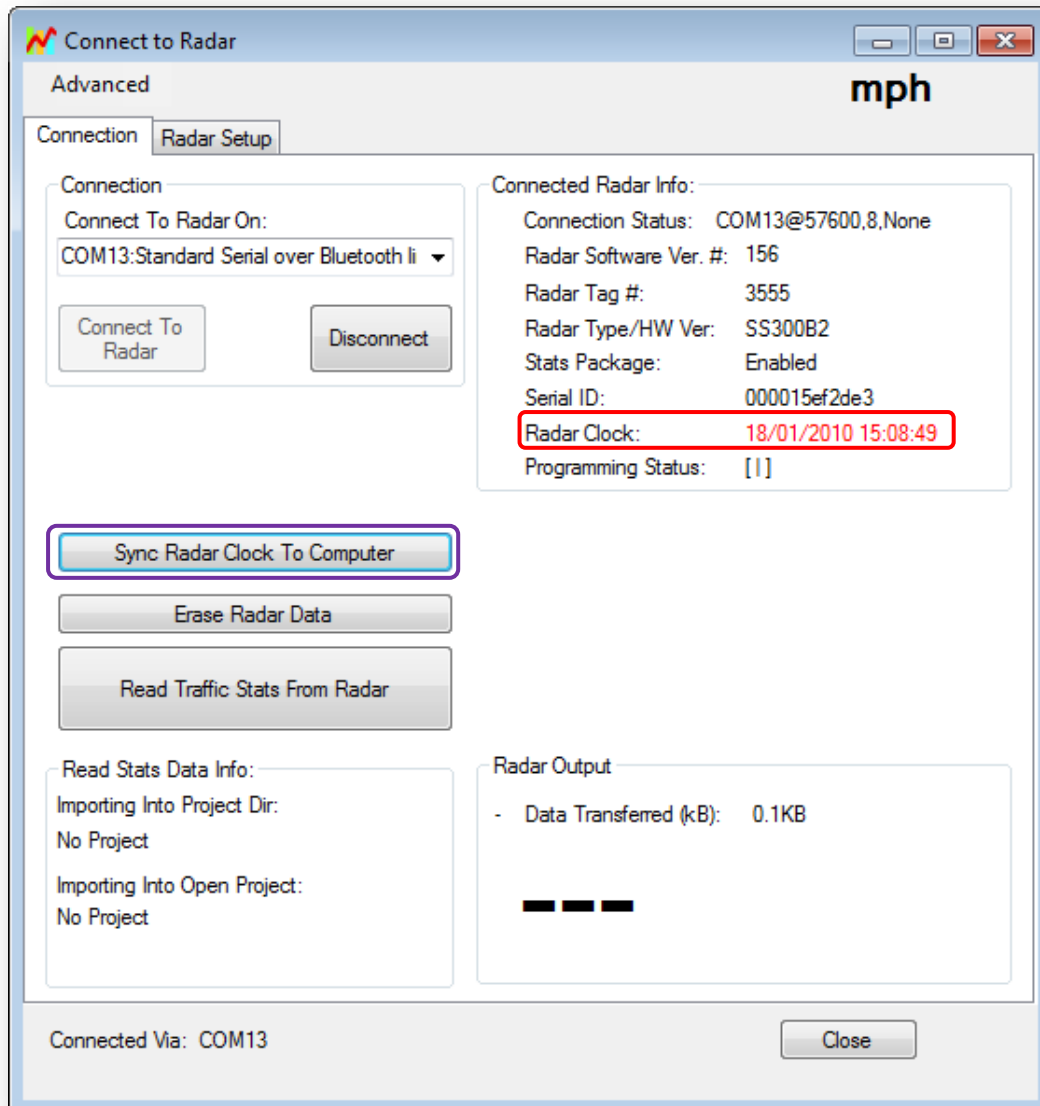
With the actions highlighted...



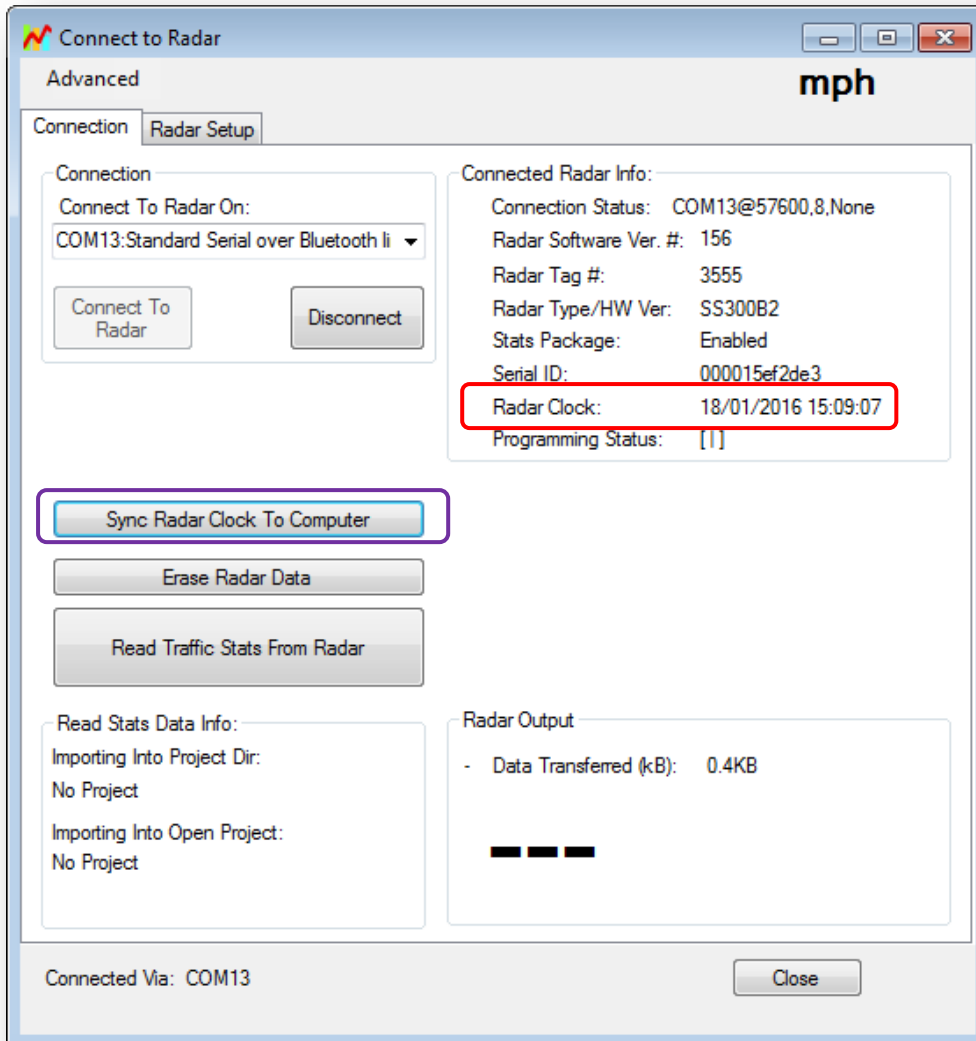
Once the firmware upgrade has been completed successfully the DF11 will disconnect and reboot automatically.



You will notice the Radar Clock is no longer in sync with the PC. This is normal, just click on the Sync Radar Clock to Computer button .

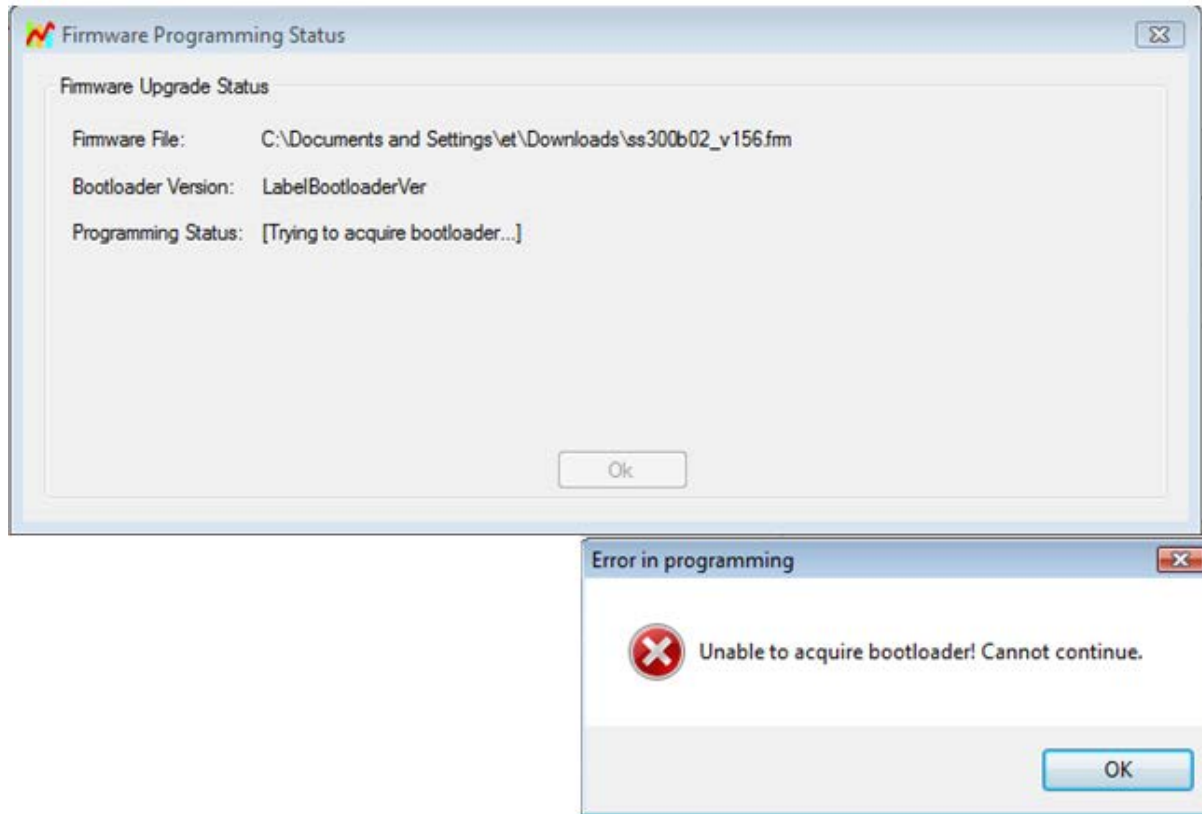


The radar will now be set at the same date and time as your laptop.

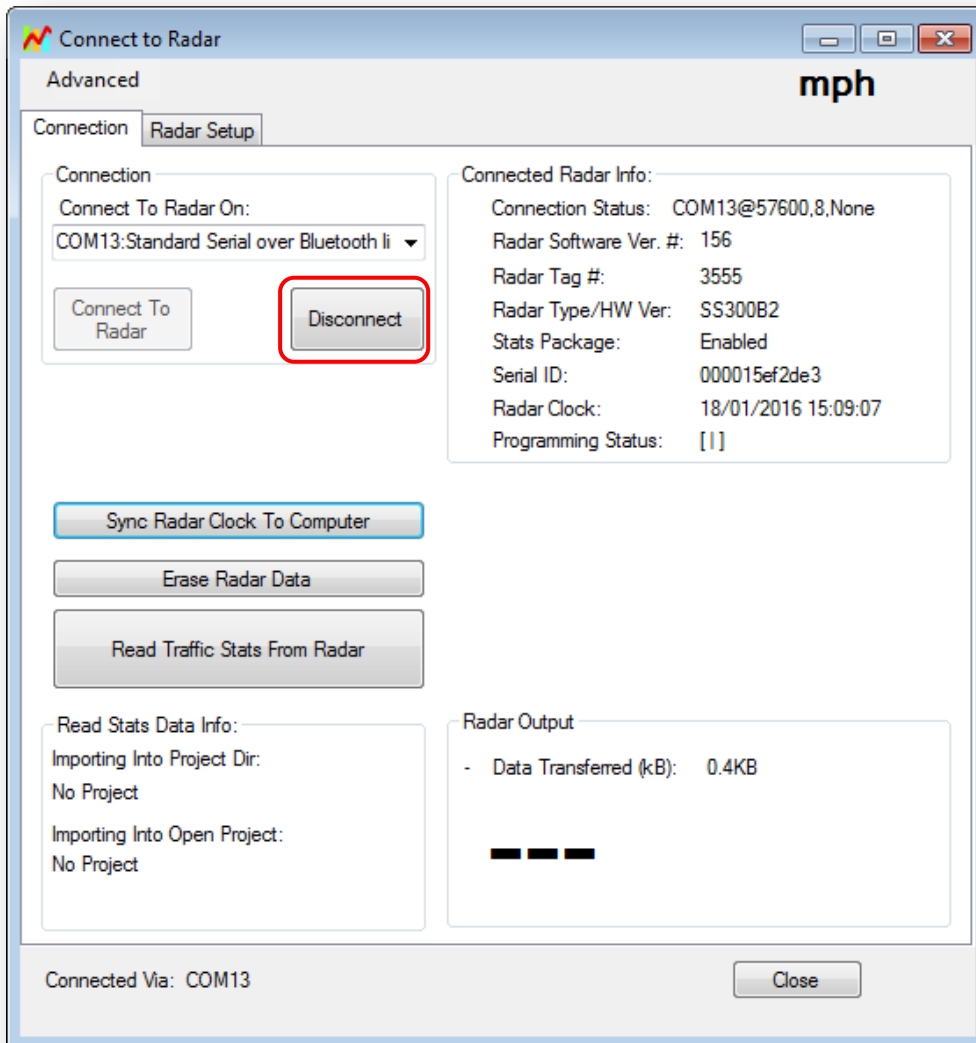


Error Message

If the following error message appears, the firmware upload has been unsuccessful; this can be due to a number of reasons and is easily remedied:



Simply disconnect the DF11 from your laptop by clicking the disconnect button as shown and then turning your sign off for about 15 seconds.



Turn on your sign and once it has powered up, click on 'Connect to Radar'. Then follow the firmware upload procedure once again.

Completion

Once you have completed the update please disconnect your Bluetooth connection as shown above and carry on using the sign as before!

Further Support

If you have any difficulty in downloading or installing the programmes please contact Unipart Dorman using the details shown on the back page. Before calling, please check that you have access to both your sign and your laptop are powered up and linked over the Bluetooth connection.

The contents of this document are copyright © Unipart Rail 2016 - All rights reserved



Contact us:

Unipart Dorman
Wennington Road
Southport
Merseyside
PR9 7TN
UK

Tel +44 (0)1704 518000

Fax +44 (0)1704 518001

Email dorman.enquiries@unipartdorman.co.uk

The contents of this document are copyright © Unipart Rail 2016 - All rights reserved

