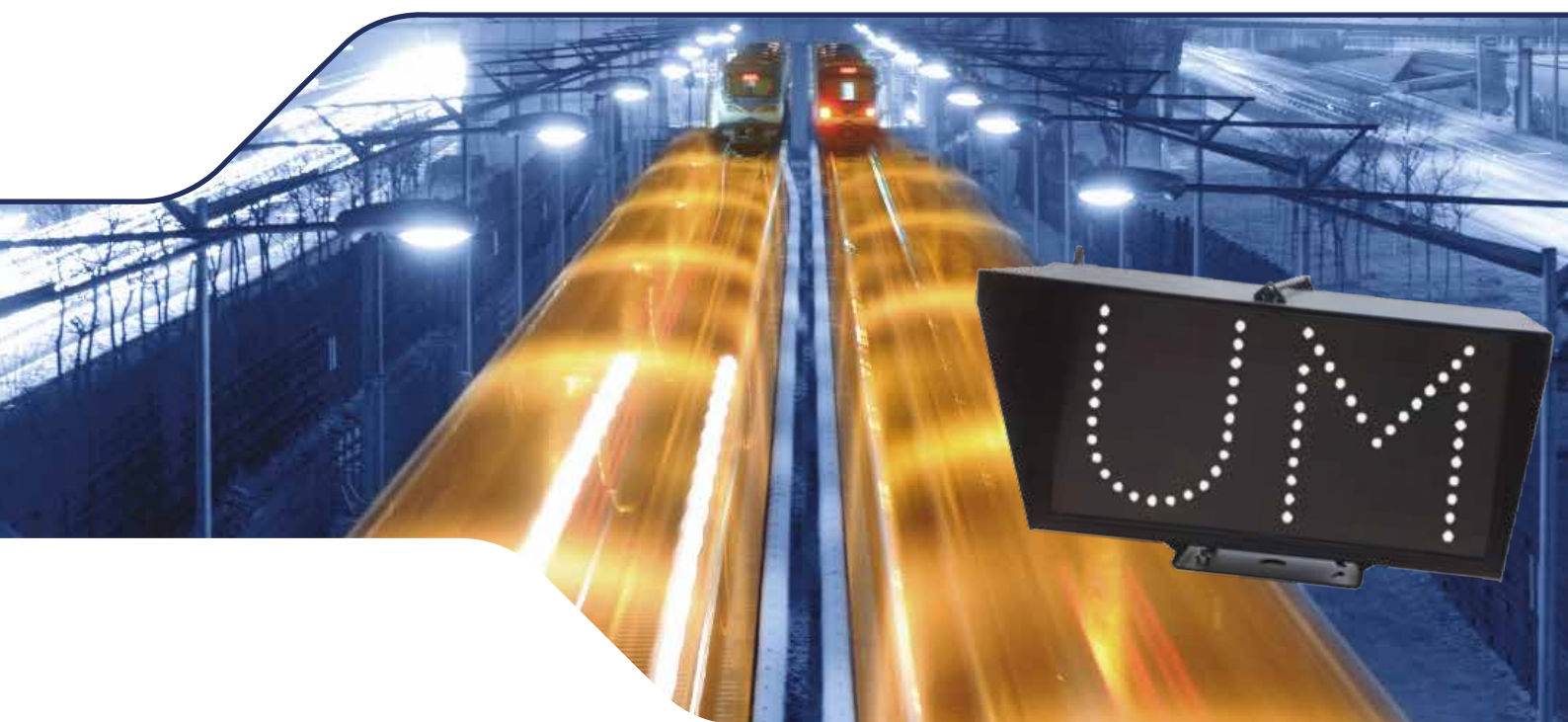




Double Width Alphanumeric Route Indicator



Designed to meet network requirements for cost effective, highly reliable LED signalling, the Unipart Dorman Double Width Alphanumeric Route Indicator allows 2 characters to be displayed simultaneously and side by side on one indicator.

Initially developed to solve a particular set of local issues in the Leeds Station area, Unipart Dorman worked in close collaboration with Network Rail to ensure that the time between the initial proposal and installation was as short as possible without compromising the font or character size of BR 1651 Pt 1, the UK railway specification for Theatre type route indicators.

The indicator is designed to be compatible with all current mounting and termination details without any modification to either indicator or infrastructure. It is a safe and durable choice where long service life and minimal maintenance delivered by the latest LED technology are key factors.

Features & Benefits

- Double SARI can show either 6 double character indications or 12 single character indications and combinations of single and double indications are also available
- Reduced installation and maintenance costs
- LED light sources designed to give a long and predictable service life

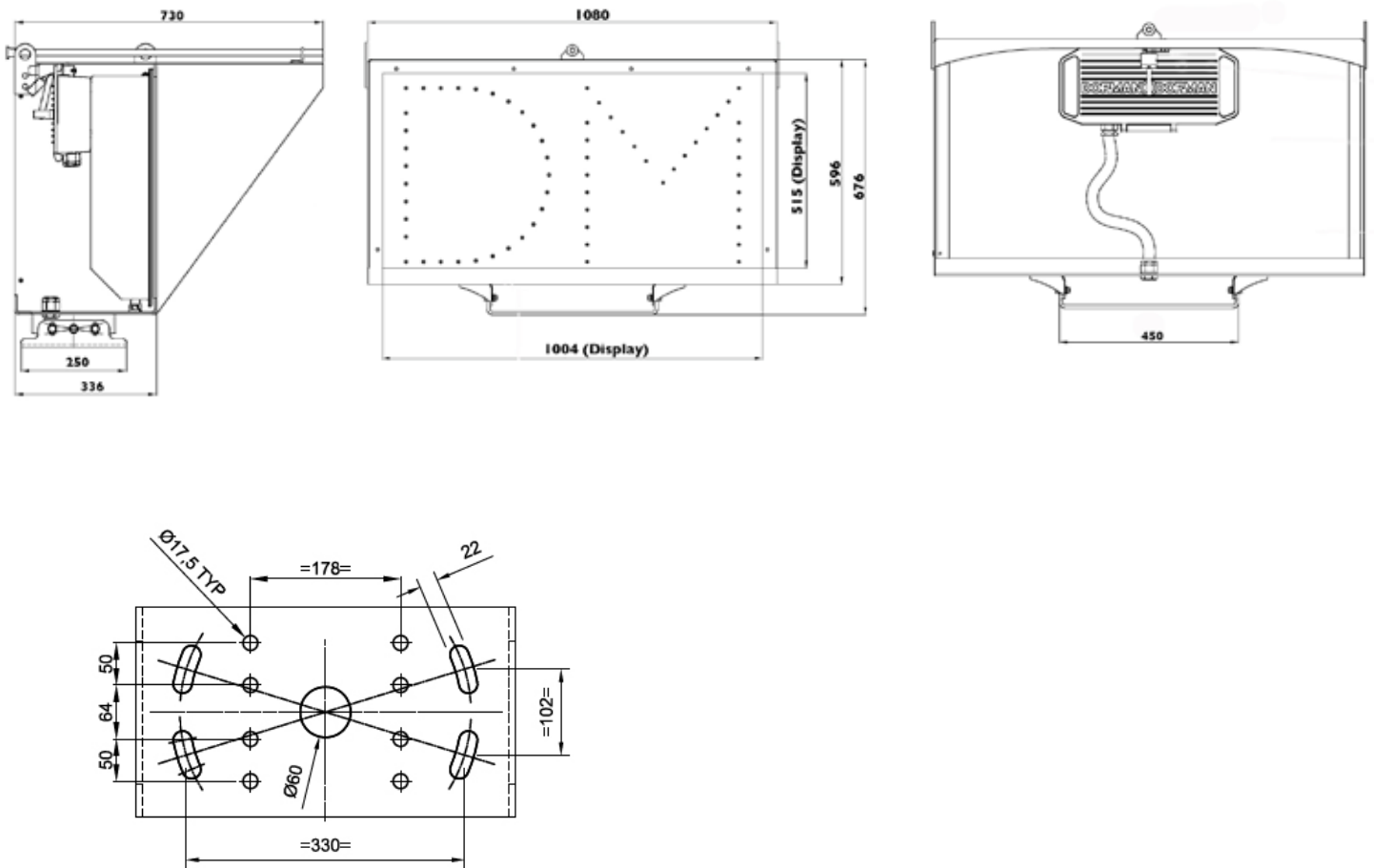


Ordering

Description	PADS/Cat No.
Double Character SARI	0086/021041

It should be noted that whilst there is only one PADS/Cat number allocated to the Unipart Dorman Double Width Alphanumeric Classic Indicator range; each unit requires the completion of a type specific order form listing each indication, which then generates a bespoke indicator part number.

Product Drawings



Technical Data

Weight	52Kg
Nominal Voltage (operating range) AC	110V (88-121V)
Nominal Voltage (operating range) DC	120V (88-145V)
Nominal Current Draw	300mA
Lamp Proving Detail - Relay	BR941 relay
Lamp Proving Detail - SSI	Path 1 or 4
Operating Temperature Range	-25° to +40° C (-13° to +104° F)
IP Rating	IP 65
Compliances	BR 1651 Part I
Product Approval Certificate Number	PA05/02433
Readability Distance	250m
Sighting Device	Fixed Tube
Maximum Indication Configuration	6 Double Characters or 12 Single Characters of combinations thereof

About Unipart

The Unipart Group is a leading UK manufacturer, full service logistics provider and consultant in operational excellence. Operating across a range of market sectors, including automotive, manufacturing, mobile telecoms, rail, retail and technology, Unipart offers a breadth of services to a wide range of blue chip clients internationally.

Unipart Dorman

Wennington Road, Southport,
Merseyside, PR9 7TN

Tel: +44 (0) 1704 518000

Fax: +44 (0) 1704 518001

email: dorman.enquiries@unipartdorman.co.uk

www.unipartdorman.co.uk



Our products are distributed through Unipart Rail
Visit www.unipartrail.com for details