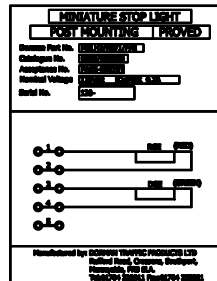


Parts List				
ITEM	QTY	PART NUMBER	TITLE	MATERIAL
1	1	B20.19185	MSL BACKBOARD ASSY	ALUMINIUM
2	1	B81.80021	LOCKING BOLT ASSY	MILD STEEL (ZINC PLATED)
3	1	SLM2/G-1/P/G	SLM ASSEMBLY GREEN - GROUND PADS No.0086/001299	ALUMINIUM
4	1	SLM2/R-1/P/G	SLM ASSEMBLY RED - GROUND PADS No.0086/001294	ALUMINIUM
5	1	B81.70002	MAIN HOUSING ASSEMBLY	ALUMINIUM
6	2	B81.80000M003	VISOR (250 LONG)	ALUMINIUM

- NOTES:
- ALL ALUMINIUM COMPONENTS PAINTED ALL OVER WITH: POWDER COAT USING FERRO 384-70059 GREY FINE TEXTURE (COLOUR TO BS4800 00-A-05 GREY).
  - WIRING DIAGRAM ATTACHED TO INNER FACE OF COVER.
  - ALL FASTENERS - STAINLESS STEEL
  - RKB221 BRASS PADLOCK, PADS No. 0086/029003 IS NOT SUPPLIED WITH THIS ASSEMBLY.



PRODUCT / WIRING DIAGRAM LABEL DETAIL FIXED TO INSIDE REAR DOOR

DETAIL OF POST MOUNT & CLAMPING ARRANGEMENT.  
NOTE: THIS SECTION IS COVERED BY CLOSURE OF THE HINGED DOOR FOR ANTI-VANDAL PURPOSES.

**SITE INSTALLATION NOTE**

WHEN INSTALLING MSL ONTO POST, ENSURE THE FOLLOWING TORQUE SETTINGS ARE MET:  
4 OFF M6 SOCKET HD. SCREWS (CLAMPING BLOCK) - 0.8 Nm.  
8 OFF M6 GRIND SCREWS (MIDDLE OF CLAMP BLOCK) - 1.8 Nm.

Uncontrolled Copy for Information Only

TOTAL ASSEMBLED SIGNAL MASS = 17kg.

ALL DIMENSIONS IN mm UNLESS OTHERWISE STATED

DORMAN REF No. MSLH2/RG/1/P/G  
CUSTOMER REF No.

TITLE MSL ASSEMBLY (PHONE CROSSING OPERATOR)

THIRD ANGLE PROJ  
Document No. d19-2617-1

MATERIAL	TOLERANCES
X	+ / -
X,0	+ / - 0.25
X,00	+ / - 0.10
X,000	+ / - 0.05
ANGULAR	+ / - 0.025
	+ / - 0.25

DRAWN M.DURHAM  
APPROVED L.GREEN  
DATE 11/08/2005  
SCALE NTS  
SHEET 1 OF 1 SHEETS

ISS	DATE	INI	ALTERATIONS
2	02/03/06	MD	SEE DCC No.3079
1	23/11/05	MD	SEE DCC No.2973
0	11/08/05	MD	DCC No. 2861

**DORMAN**

DORMAN TRAFFIC PRODUCTS LTD  
SOUTHPORT PR9 6LA ENGLAND

THIS DOCUMENT AND THE INFORMATION THEREIN IS CONFIDENTIAL AND MAY NOT BE USED OR DISCLOSED WITHOUT WRITTEN AUTHORIZATION

DRAWING No PART No. ISSUE  
0086/009260 2