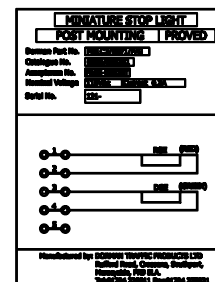


Parts List				
ITEM	QTY	PART NUMBER	TITLE	MATERIAL
1	1	B20.19198	MSL BACKBOARD ASSY	ALUMINIUM
2	1	B81.80021	LOCKING BOLT ASSY	MILD STEEL (ZINC PLATED)
3	1	SLM2/G-1/P/G	SLM ASSEMBLY GREEN - GROUND PADS No.0086/001299	ALUMINIUM
4	1	SLM2/R-1/P/G	SLM ASSEMBLY RED - GROUND PADS No.0086/001294	ALUMINIUM
5	1	B81.70002	MAIN HOUSING ASSEMBLY	ALUMINIUM
6	2	B81.80000M003	VISOR (250 LONG)	ALUMINIUM

- NOTES:
- ALL ALUMINIUM COMPONENTS PAINTED ALL OVER WITH: POWDER COAT USING FERRO 384-70059 GREY FINE TEXTURE (COLOUR TO BS4800 00-A-05 GREY).
 - WIRING DIAGRAM ATTACHED TO INNER FACE OF COVER.
 - ALL FASTENERS - STAINLESS STEEL
 - RKB221 BRASS PADLOCK, PADS No. 0086/029003 IS NOT SUPPLIED WITH THIS ASSEMBLY.



PRODUCT / WIRING DIAGRAM LABEL DETAIL FIXED TO INSIDE REAR DOOR

DETAIL OF POST MOUNT & CLAMPING ARRANGEMENT.
NOTE: THIS SECTION IS COVERED BY CLOSURE OF THE HINGED DOOR FOR ANTI-VANDAL PURPOSES.

SITE INSTALLATION NOTE

WHEN INSTALLING MSL ONTO POST, ENSURE THE FOLLOWING TORQUE

2 OFF M8 SOCKET HEAD SCREWS (CLAMPING BLOCK) - 6.8Nm.

3 OFF M8 GRIP SCREWS (MIDDLE OF CLAMP BLOCK) - 6.8Nm.

Uncontrolled Copy for Information Only

TOTAL ASSEMBLED SIGNAL MASS = 17kg.

ALL DIMENSIONS IN mm UNLESS OTHERWISE STATED

TITLE		THIRD ANGLE PROJ		DORMAN	
MSL ASSEMBLY (PROCEED WITH CAUTION)		Document N° at19-3372-1		DORMAN TRAFFIC PRODUCTS LTD SOUTHPORT PR9 8LA ENGLAND	
MATERIAL		DRAWN M.DURHAM APPROVED L.GREEN		THIS DOCUMENT AND THE INFORMATION THEREIN IS CONFIDENTIAL AND MAY NOT BE USED OR DISCLOSED WITHOUT WRITTEN AUTHORIZATION	
TOLERANCES		DATE 23/11/2005 SCALE NTS		DRAWING No PART No. ISSUE	
X	+ / -	0.25		0086/009261	
X,0	+ / -	0.10		1	
X,00	+ / -	0.05			
X,000	+ / -	0.025			
ANGULAR	+ / -	0.25°			
		SHEET 1 OF 1 SHEETS			

DORMAN REF No. MSLC2/RG/1/P/G

CUSTOMER REF No.