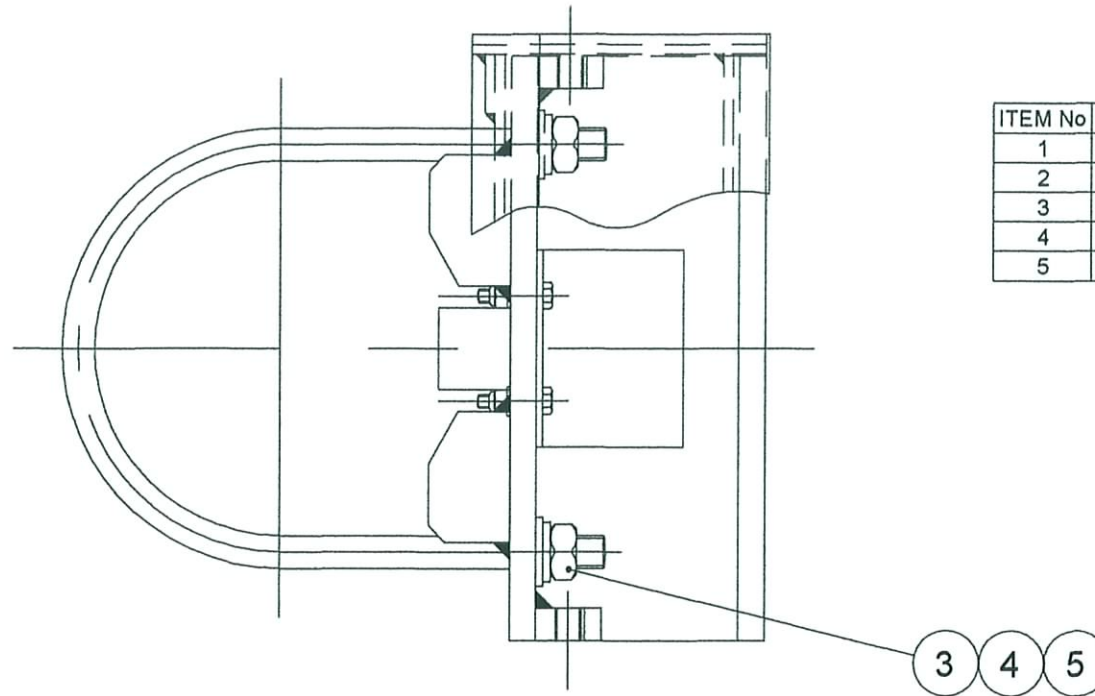
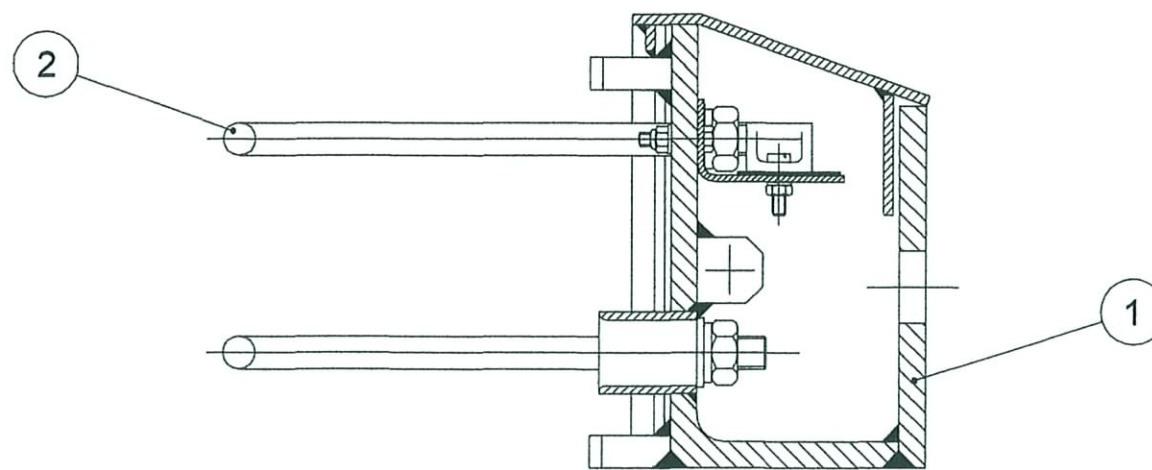


6
YSC 157

ISSUE	GRID REF	ALTERATION	DATE
0	ALL	ORIGINAL DCC 4615.	27/03/09



ITEM No	QTY	DESCRIPTION	PART No
1	1	MOUNTING BRACKET SUB-ASSEMBLY	YSC 156
2	1	U-BOLT	YSC 155
3	2	M10 FULL NUT TO BS3692-4.6	
4	2	M10 BRIGHT WASHER TO BS4320 FORM A	
5	2	M10 SPRING WASHER TO BS4464 TABLE 1 TYPE A	



UNLESS OTHERWISE STATED, THE TOLERANCE OF DIMENSIONS SHALL BE AS BELOW.

NOMINAL SIZE	X	X,0	X,00	X,000	ANGULAR
MACHINED	+/- 0.25	+/- 0.1	+/- 0.05	+/- 0.025	+/- 0.25
FABRICATED	+/- 0.25	+/- 0.1	+/- 0.05	+/- 0.025	+/- 0.25

UNLESS OTHERWISE STATED.

SCREW THREADS ARE TO BE BS3643 CLASS 6H/6g.
 SHARP EDGES TO BE REMOVED.
 TEMPORARY OR PERMANENT CONNECTIONS OR ATTACHMENTS OTHER THAN THOSE SHOWN ON THE DRAWINGS ARE NOT PERMITTED WITHOUT APPROVAL OF ALL RELEVANT ENGINEERING DIRECTORS.
 DIMENSIONS ARE IN MILLIMETRES.
 DRAWING PRACTICE GENERALLY TO BS8888.

Drawn by BT	Checked by IW	Approved by BW	Date. 27/03/09
----------------	------------------	-------------------	-------------------

MOUNTING BRACKET ASSEMBLY
WIG WAG "STANDING RED MAN"

YSC 157

Edition A	Sheet 1 of 1
--------------	-----------------

PROJECTION DO NOT SCALE

IF IN DOUBT, ASK

This drawing and any information or descriptive matter set out hereon, are the confidential property of UNIPART RAIL LIMITED, and must not be loaned, copied or used for manufacturing, tendering or any other purpose without their written permission.

COPYRIGHT © 2009 UNIPART RAIL LIMITED