

Uncontrolled When Printed

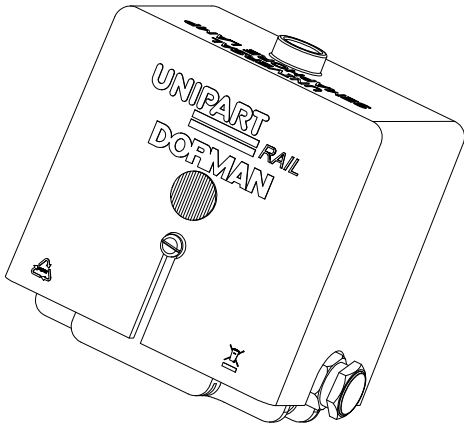
MAIN BODY AND BASES MANUFACTURED FROM BLACK XENYO (SPARK FINISH).  
LAMP POD MANUFACTURED FROM LEXAN LS2 POLYCARBONATE.

THE LAMP BASE CAN BE DRILLED TO SUIT EACH INDIVIDUAL  
MOUNTING ARRANGEMENT.

THE LAMP ASSEMBLY IS SUPPLIED WITH TWO SETS OF M8 x 50 S/S BOLTS  
COMPLETE WITH WASHERS & NUTS.

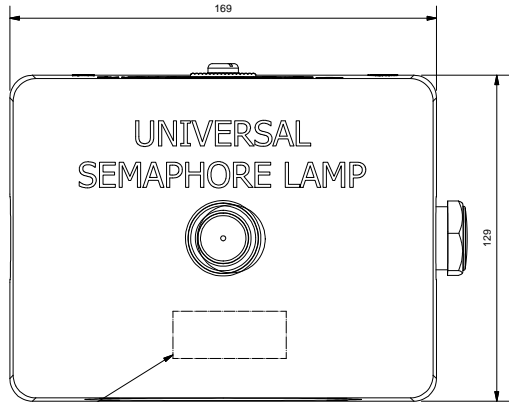
ELECTRICAL DETAILS:

VOLTAGE - 6VDC (NOMINAL), CURRENT - 24mA (NOMINAL)

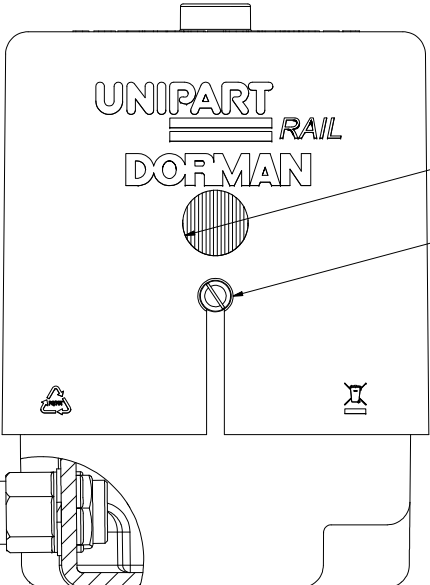
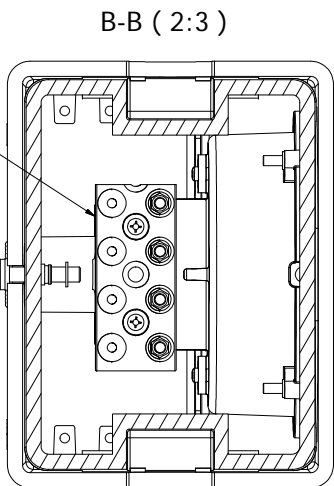
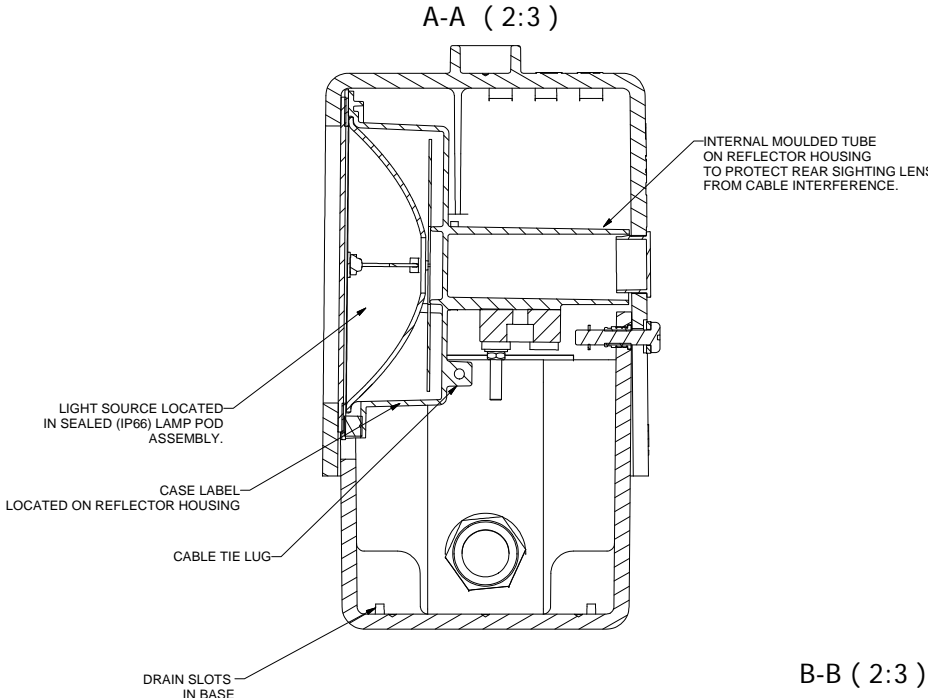


UNIVERSAL SEMAPHORE LAMP  
SHOWN WITH SHALLOW BASE.

ALL OTHER VIEWS SHOWN WITH  
DEEP BASE.



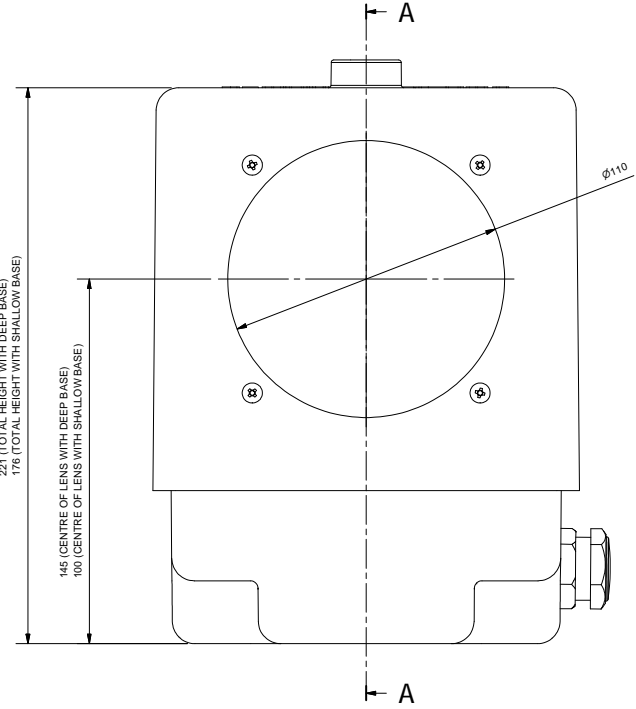
PRODUCT LABEL



REAR SIGHTING LENS

SINGLE FASTENING SCREW  
FOR MAIN BODY

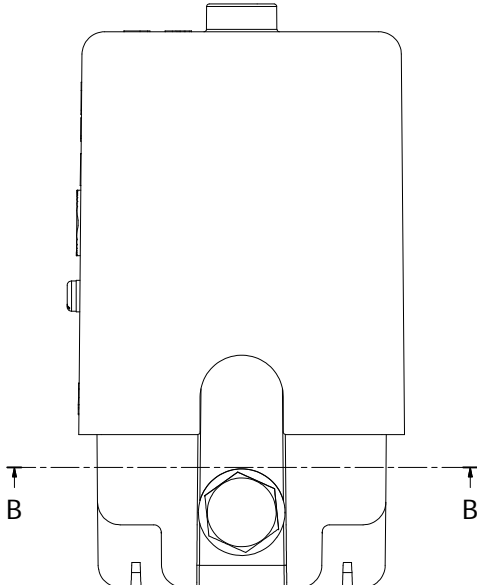
CABLE GLAND WITH BLANKING PLUG  
MAX CABLE DIAMETER - 18MM  
(GLAND CAN BE FITTED ON EITHER SIDE OF BASE)  
OTHER SIDE OF BASE CAN BE FITTED WITH  
STOPPING PLUG (SUPPLIED)



221 (TOTAL HEIGHT WITH DEEP BASE)  
178 (TOTAL HEIGHT WITH SHALLOW BASE)

145 (CENTRE OF LENS WITH DEEP BASE)  
100 (CENTRE OF LENS WITH SHALLOW BASE)

Ø110



UNIVERSAL SEMAPHORE LAMP (ELEVATED)  
WITH EXTERNAL SUPPLY (STD INTENSITY).

UNIPART RAIL - DORMAN PART NO. USL2/WW/P/E-/LE.

PRODUCT ACCEPTANCE No. PA05 03335

ALL DIMENSIONS IN MM UNLESS OTHERWISE STATED

DO NOT SCALE

<b>TITLE</b> UNIVERSAL SEMAPHORE LAMP (ELEVATED) ASSEMBLY (EXTERNAL SUPPLY - LOW INTENSITY)				<b>THIRD ANGLE PROJECTION</b>	
				Document No	
<b>MATERIAL</b>	<b>TOLERANCES</b>			DRAWN M DURHAM	
	X		0.25	CHECK IW	
	X.0	+/-	0.10	DATE 30/09/08	
	X.00	+/-	0.05	SCALE 1:1	
	X.000	+/-	0.025	SHEET 1 OF 1 SHEET(S)	
	ANGULAR	+/-	0.25°		
A					

0	10/10/08	MD	ORIGINAL	DCC No 4304
ISS	DATE	INI	ALTERATIONS	
<b>DORMAN</b>				
DORMAN TRAFFIC PRODUCTS LIMITED SOUTHPORT PR9 8LA ENGLAND				
THIS DOCUMENT AND THE INFORMATION THEREIN IS CONFIDENTIAL AND MAY NOT BE USED OR DISCLOSED WITHOUT WRITTEN AUTHORIZATION				
<b>DRAWING / PART No</b>				
086/009195				