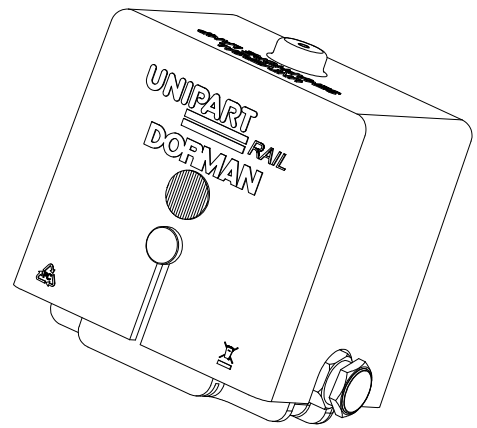
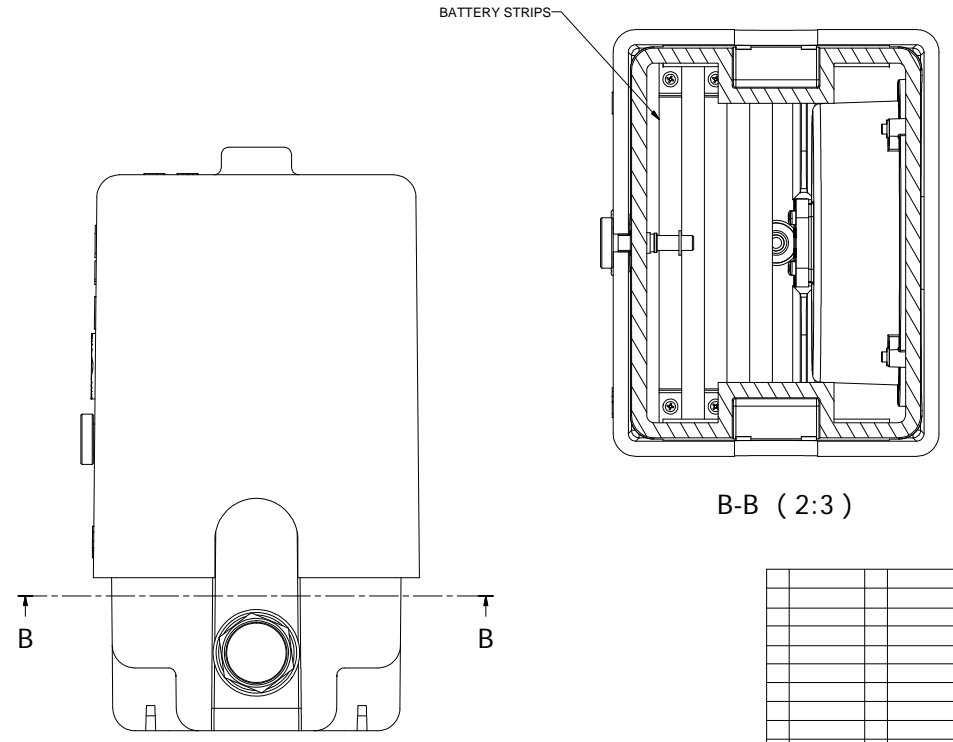
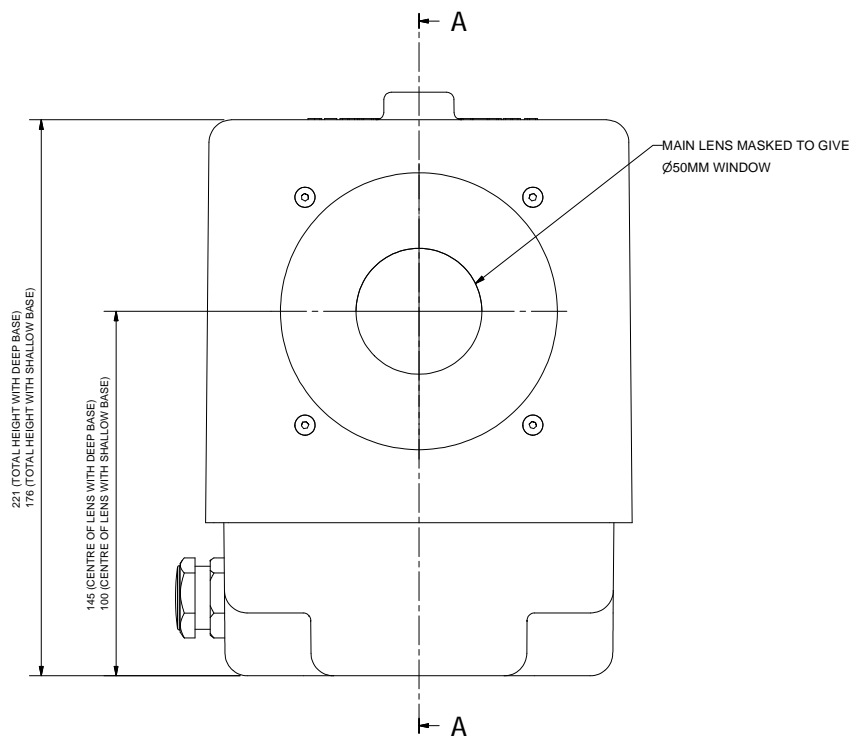
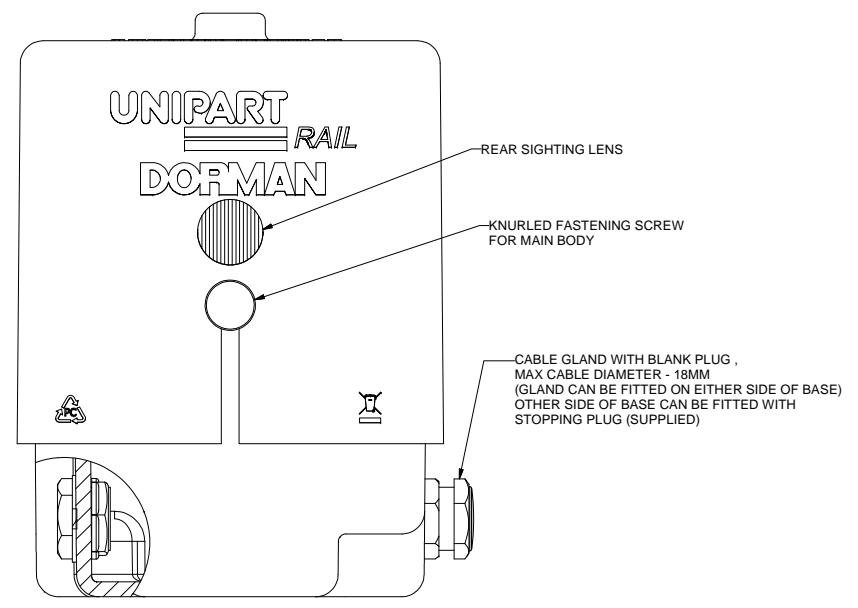
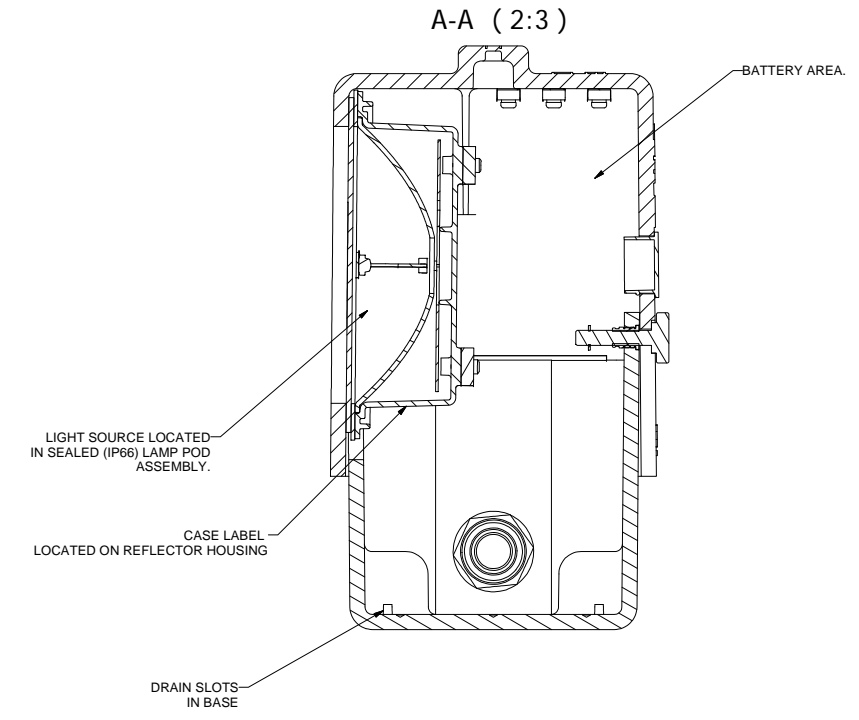
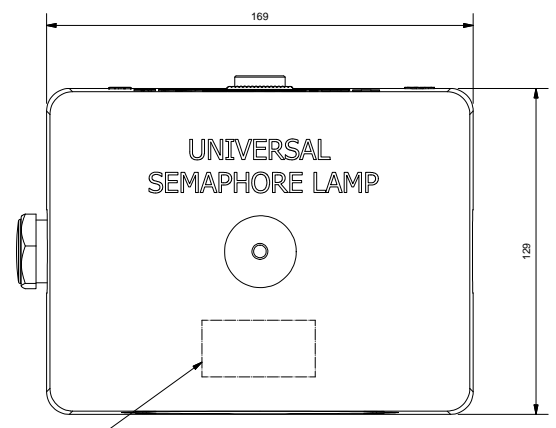


Uncontrolled When Printed

MAIN BODY AND BASES MANUFACTURED FROM BLACK XENYO (SPARK FINISH).
 LAMP POD MANUFACTURED FROM LEXAN LS2 POLYCARBONATE.
 THE LAMP BASE CAN BE DRILLED TO SUIT EACH INDIVIDUAL MOUNTING ARRANGEMENT.
 THE LAMP ASSEMBLY IS SUPPLIED WITH TWO SETS OF M8 x 50 S/S BOLTS COMPLETE WITH WASHERS & NUTS.
 REPLACEMENT BATTERIES - DAAB50 - DORMAN PART No. B13.12170 (2 OFF).
 ELECTRICAL DETAILS:
 VOLTAGE - 6VDC (NOMINAL), CURRENT - 24mA (NOMINAL)



UNIVERSAL SEMAPHORE LAMP SHOWN WITH SHALLOW BASE.
 ALL OTHER VIEWS SHOW WITH DEEP BASE.



UNIVERSAL SEMAPHORE LAMP (GROUND MOUNTED) WITH INTERNAL BATTERIES (LOW INTENSITY).
 UNIPART RAIL - DORMAN PART NO. USL2/WW/P/B-/LG.
 PRODUCT ACCEPTANCE No. PA05 03335.

DO NOT SCALE

ALL DIMENSIONS IN MM UNLESS OTHERWISE STATED
 CUSTOMER REF No

TITLE UNIVERSAL SEMAPHORE LAMP (GROUND) ASSEMBLY (INTERNAL BATTERIES - LOW INTENSITY)		THIRD ANGLE PROJECTION	
MATERIAL	X	TOLERANCES	Document No
	X.0	+/-	DRAWN M DURHAM
	X.00	+/-	CHECK IW
	X.000	+/-	DATE 30/09/08
	ANGULAR	+/-	SCALE 1:1
		0.25	SHEET 1 OF 1 SHEET(S)

0	10/10/08	MD	ORIGINAL	DCC No 4304
ISS	DATE	INI	ALTERATIONS	
DORMAN				
DORMAN TRAFFIC PRODUCTS LIMITED SOUTHPORT PR9 8LA ENGLAND				
THIS DOCUMENT AND THE INFORMATION THEREIN IS CONFIDENTIAL AND MAY NOT BE USED OR DISCLOSED WITHOUT WRITTEN AUTHORIZATION				
DRAWING / PART No				
086/009197				