

Uncontrolled When Printed

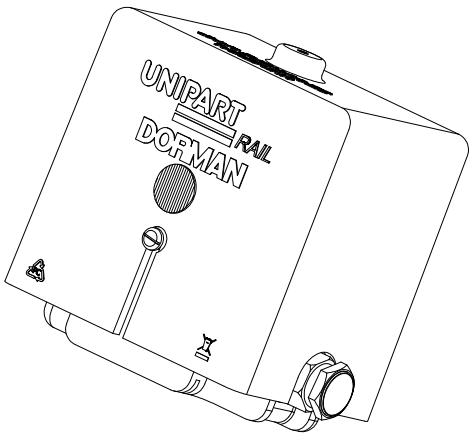
MAIN BODY AND BASES MANUFACTURED FROM BLACK XENYO (SPARK FINISH).  
LAMP POD MANUFACTURED FROM LEXAN LS2 POLYCARBONATE.

THE LAMP BASE CAN BE DRILLED TO SUIT EACH INDIVIDUAL  
MOUNTING ARRANGEMENT.

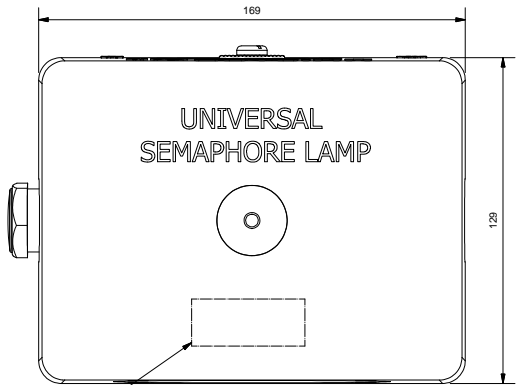
THE LAMP ASSEMBLY IS SUPPLIED WITH TWO SETS OF M8 x 50 S/S BOLTS  
COMPLETE WITH WASHERS & NUTS.

ELECTRICAL DETAILS:

VOLTAGE - 6VDC (NOMINAL), CURRENT - 24mA (NOMINAL)

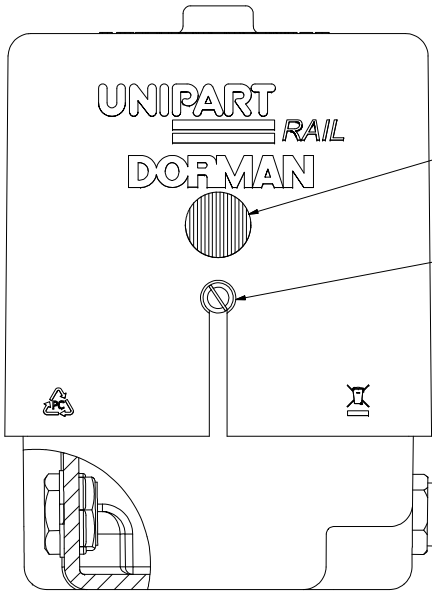
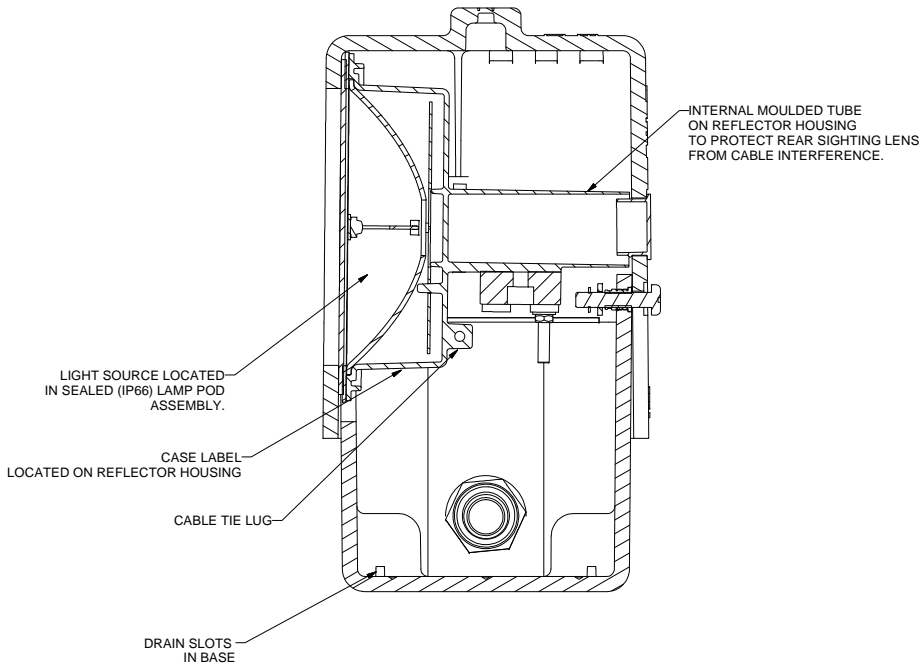


UNIVERSAL SEMAPHORE LAMP  
SHOWN WITH SHALLOW BASE.  
ALL OTHER VIEWS SHOWN WITH  
DEEP BASE.



PRODUCT LABEL

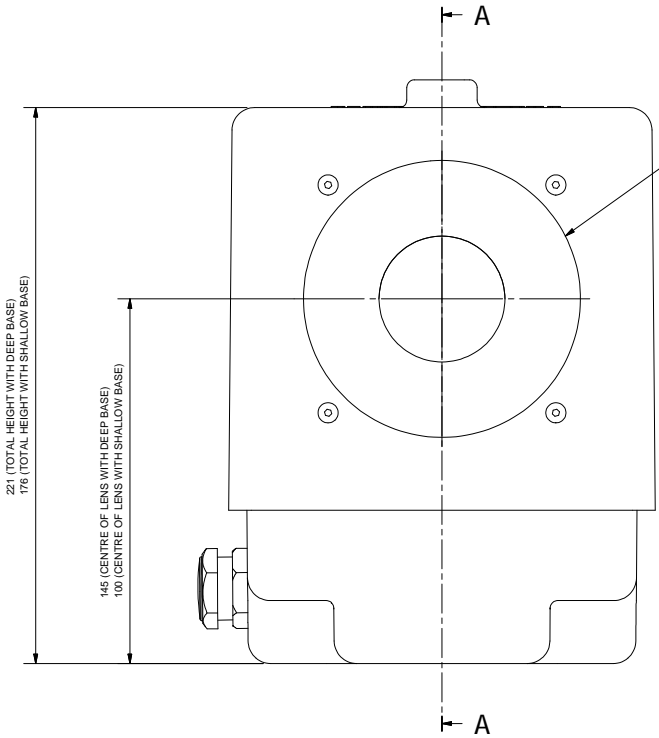
A-A ( 2:3 )



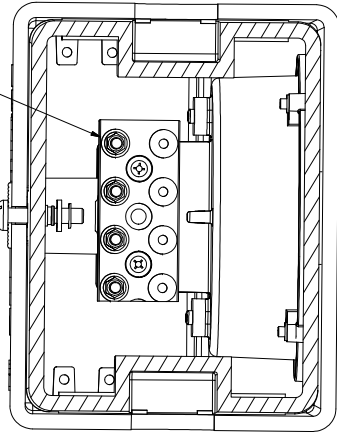
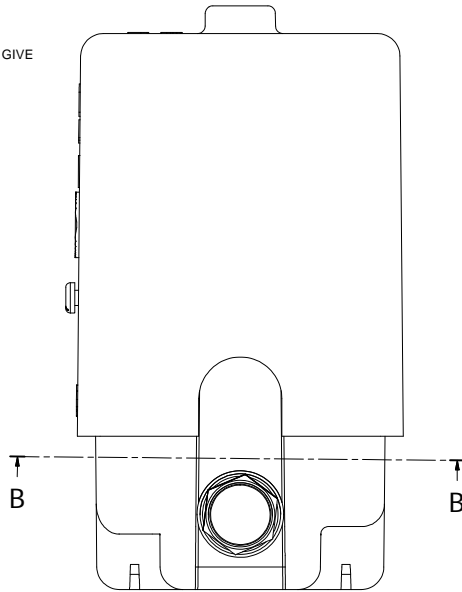
REAR SIGHTING LENS

SINGLE FASTENING SCREW  
FOR MAIN BODY

CABLE GLAND WITH BLANKING PLUG  
MAX CABLE DIAMETER - 18MM  
(GLAND CAN BE FITTED ON EITHER SIDE OF BASE)  
OTHER SIDE OF BASE CAN BE FITTED WITH  
STOPPING PLUG (SUPPLIED)



MAIN LENS MASKED TO GIVE  
Ø50MM WINDOW



B-B ( 2:3 )

UNIVERSAL SEMAPHORE LAMP (GROUND MOUNTED)  
WITH EXTERNAL SUPPLY (LOW INTENSITY).

UNIPART RAIL DORMAN PART NO. USL2/WW/P/E-/LG.

PRODUCT ACCEPTANCE No. PA05 03335

ALL DIMENSIONS IN MM UNLESS OTHERWISE STATED

CUSTOMER REF No

DO NOT SCALE

TITLE UNIVERSAL SEMAPHORE LAMP (GROUND) ASSEMBLY  
(EXTERNAL SUPPLY - LOW INTENSITY)

MATERIAL

TOLERANCES

X +/- 0.25  
X.0 +/- 0.10  
X.00 +/- 0.05  
X.000 +/- 0.025  
ANGULAR +/- 0.25

THIRD ANGLE PROJECTION

Document No

DRAWN M DURHAM

CHECK IW

DATE 30/09/08

SCALE 1:1

SHEET 1 OF 1 SHEET(S)

0 10/10/08 MD ORIGINAL DCC No 4304

ISS DATE INI ALTERATIONS

**DORMAN**

DORMAN TRAFFIC PRODUCTS LIMITED  
SOUTHPORT PR9 8LA ENGLAND

THIS DOCUMENT AND THE INFORMATION THEREIN  
IS CONFIDENTIAL AND MAY NOT BE USED OR DISCLOSED  
WITHOUT WRITTEN AUTHORIZATION

DRAWING / PART No

086/009198