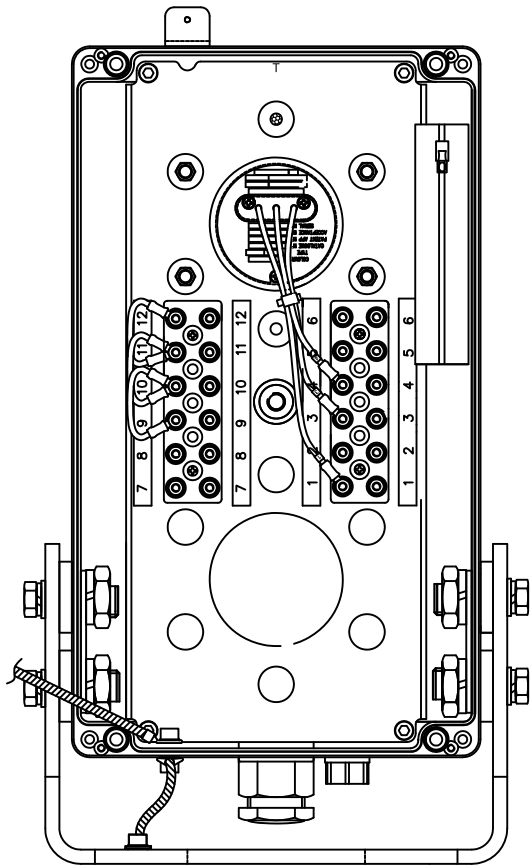
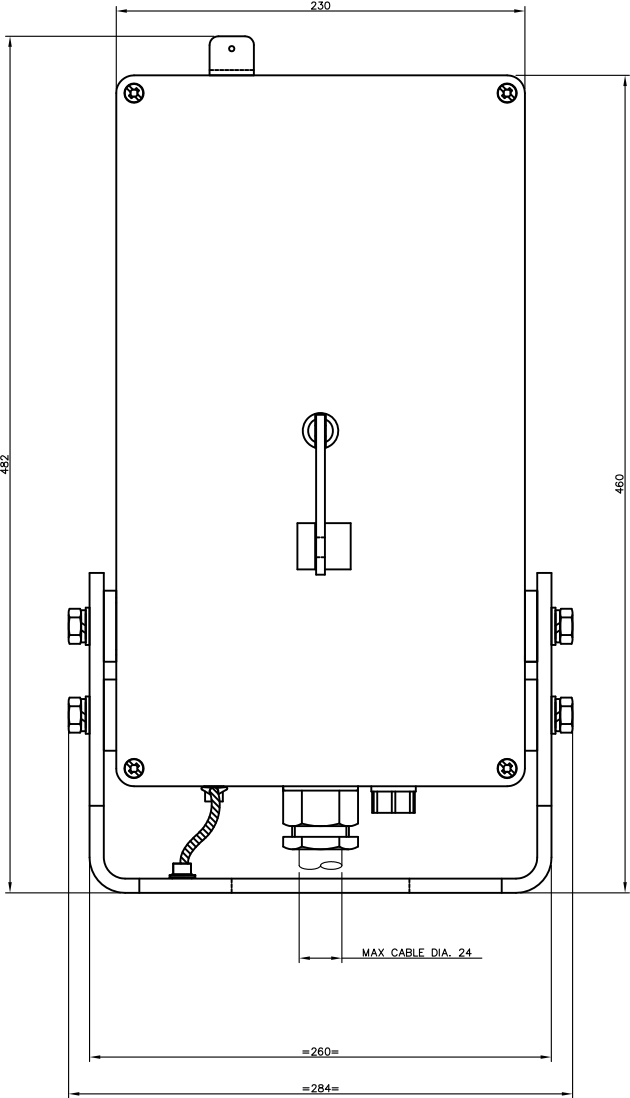


Uncontrolled When Printed

INTERNAL VIEW OF ENCLOSURE WITH LID REMOVED

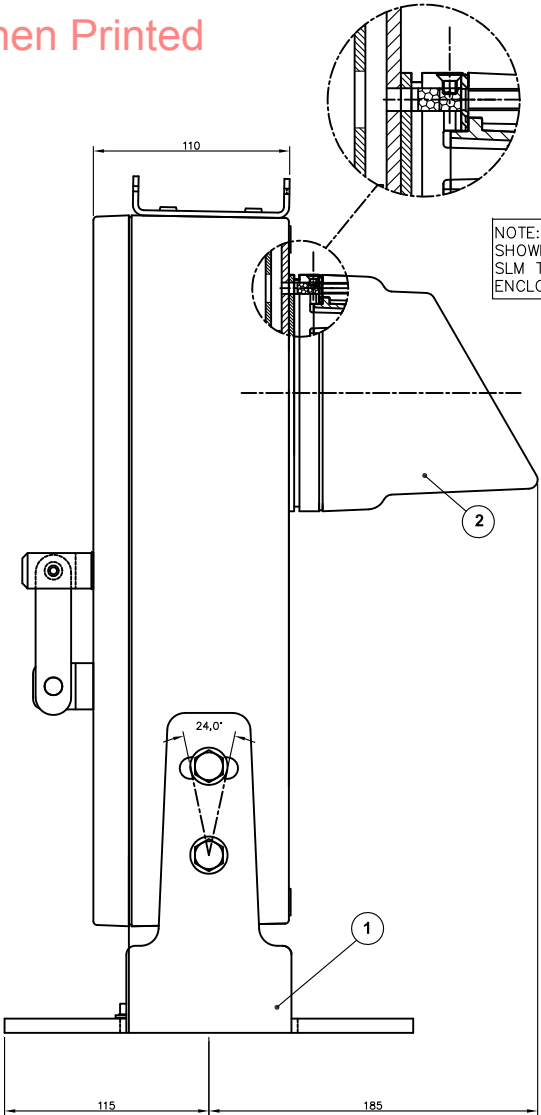


NOTE:
SIGNALS ARE INTENDED TO BE MOUNTED IN INVERTED POSITION HANGING FROM ROOF OF TUNNEL VIA MOUNTING BRACKET

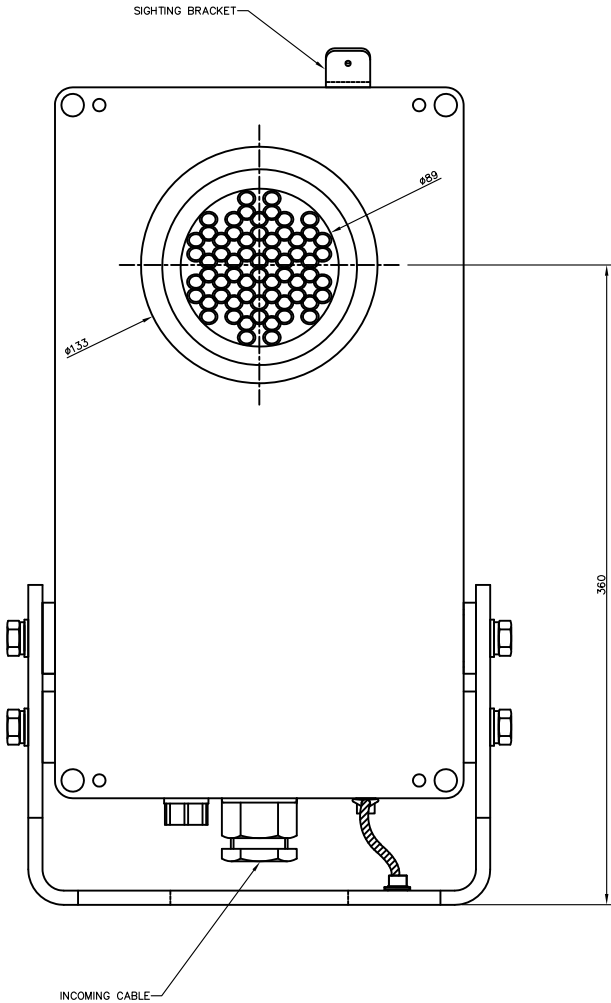


NOTES: -

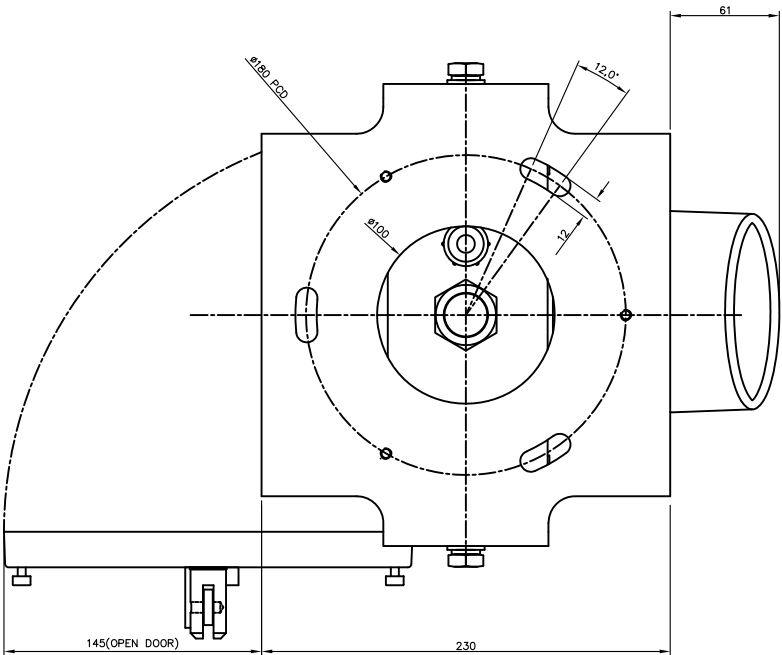
- ALL ALUMINIUM COMPONENTS PAINTED ALL OVER WITH:
ONE COAT OF TRANSPRED TWO PACK ETCH PRIMER 101
FOLLOWED BY :
ONE COAT OF BLACK MICACEOUS IRON OXIDE.
BR SPEC No. 70 ITEM 30. (FORWARD FACING PARTS)
ONE COAT OF LIGHT GREY MICACEOUS IRON OXIDE.
BR SPEC No. 70 ITEM 27A. (REAR FACING PARTS)
- WIRING DIAGRAM AND A DOCUMENT WALLET ATTACHED TO INTERNAL FACE OF THE BACK COVER.
- ALL FASTENERS ~ STAINLESS STEEL.
- RKB221 BRASS PADLOCK, PADS No.0086/029003 IS NOT SUPPLIED WITH THIS ASSEMBLY.



NOTE: CUT AWAY VIEW SHOWING VENTING FROM SLM THROUGH MAIN ENCLOSURE.



| ITEM | QTY | DORMAN PART No. | DESCRIPTION |
|------|-----|-----------------|--|
| 1 | 1 | D86.85166 | 2 ASPECT ENCLOSURE & FRAME |
| 2 | 1 | M2TM2/R/Y/1/P/G | MODULE 2 ASPECT RED/YELLOW (PADS No. 086/009237) |



TOTAL ASSEMBLED SIGNAL MASS ~ 10Kg.

DO NOT SCALE

DORMAN REF No.
M2TSH/2RY-/1P/R

CUSTOMER REF No.

ALL DIMENSIONS IN mm UNLESS OTHERWISE STATED

SPACE ENVELOPE/MECHANICAL INTERFACE DRAWING

TITLE
2 ASPECT (R/Y) MINIATURE TUNNEL SIGNAL (INVERTED MODULES)

THIRD ANGLE PROJ
Document N°

MATERIAL

TOLERANCES

X
X,0
X,00
X,000
ANGULAR

+ / -
+ / -
+ / -
+ / -
+ / -
0,25
0,10
0,05
0,025
0,25°

DRAWN C MCCANN

APPROVED IW

DATE 06/07/2011

SCALE NTS

SHEET 1 OF 1 SHEETS

DORMAN

SOUTHPORT ENGLAND

THIS DOCUMENT AND THE INFORMATION THEREIN IS CONFIDENTIAL AND MAY NOT BE USED OR DISCLOSED WITHOUT WRITTEN AUTHORIZATION

DRAWING No PART No.

086/009229

ISSUE

1

| ISS | DATE | INI | ALTERATIONS |
|-----|----------|-----|-----------------|
| 4 | 07/03/14 | MD | SEE ECN449_1 |
| 3 | 25/07/13 | MD | SEE ECN125_0 |
| 2 | 24/04/13 | IW | SEE DCC6546 |
| 1 | 04/12/12 | MD | SEE DCC No.6306 |
| 0 | 06/07/11 | CM | ORIGINAL |