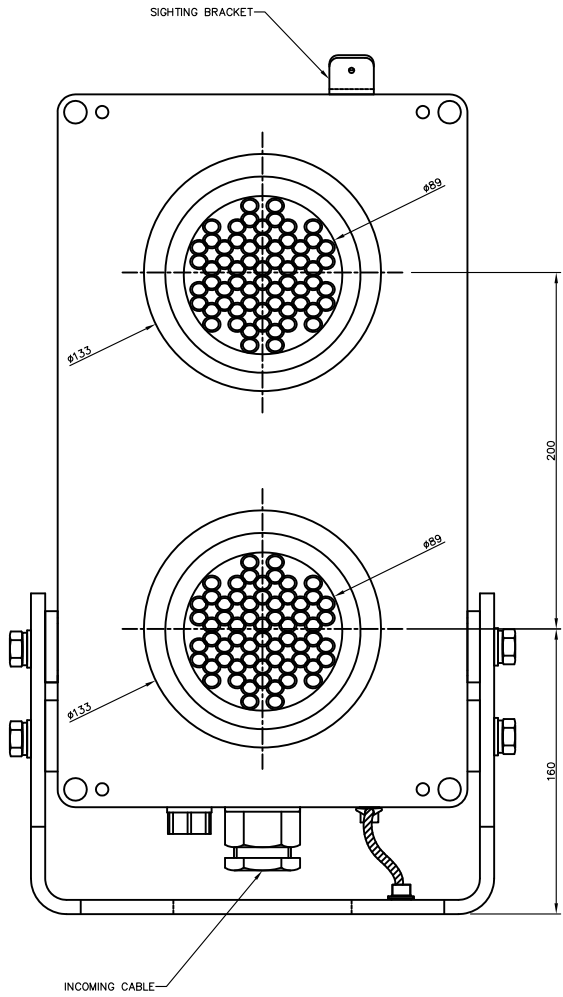
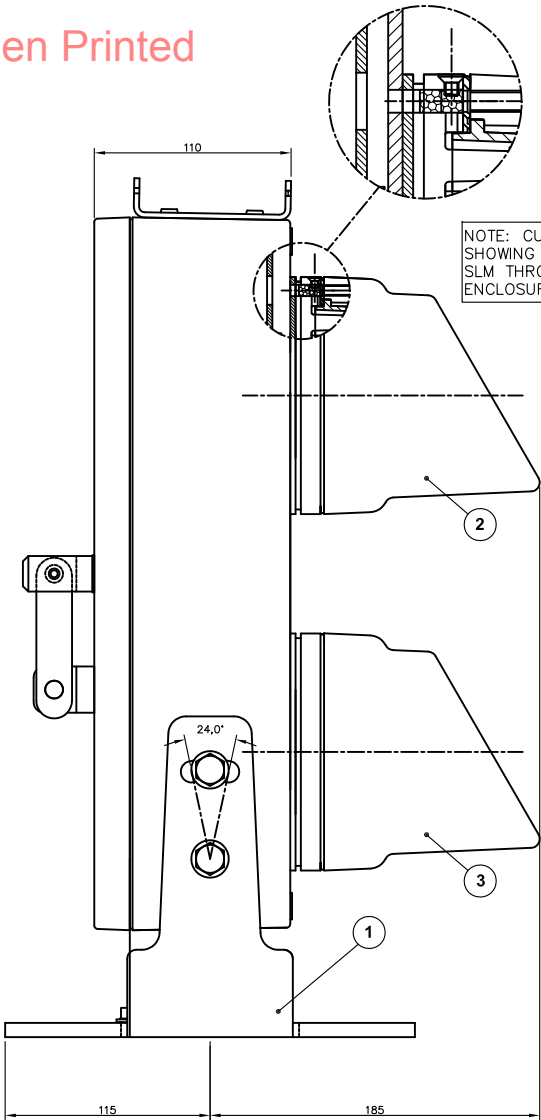
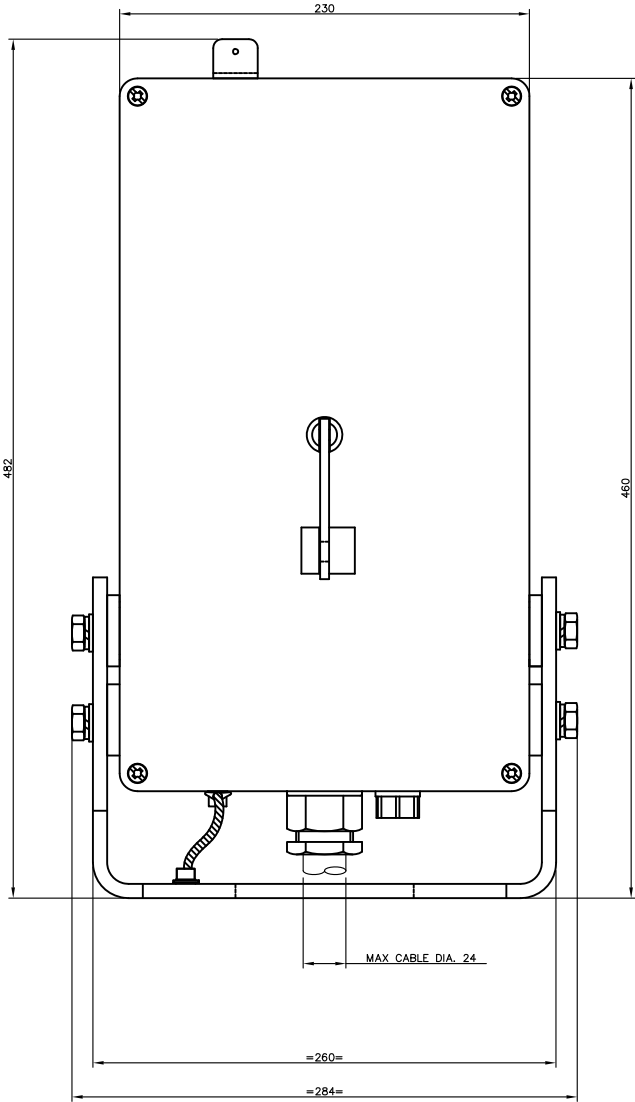
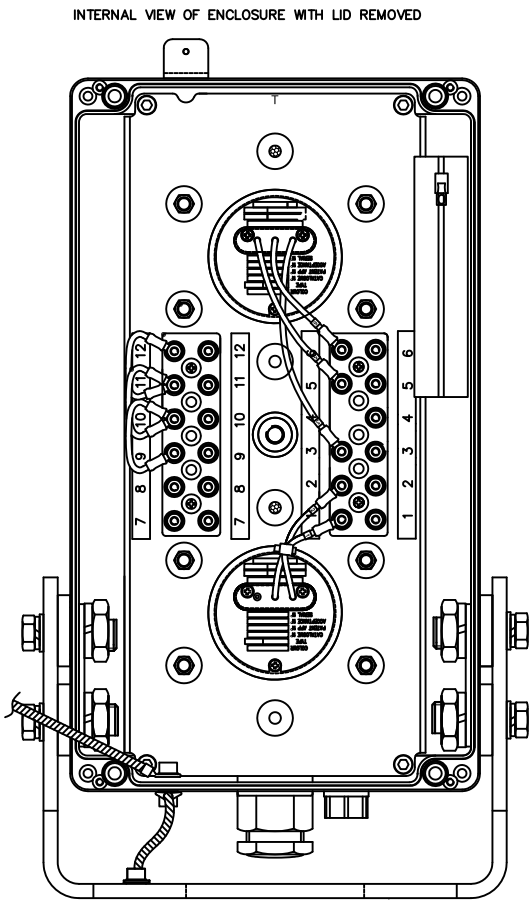


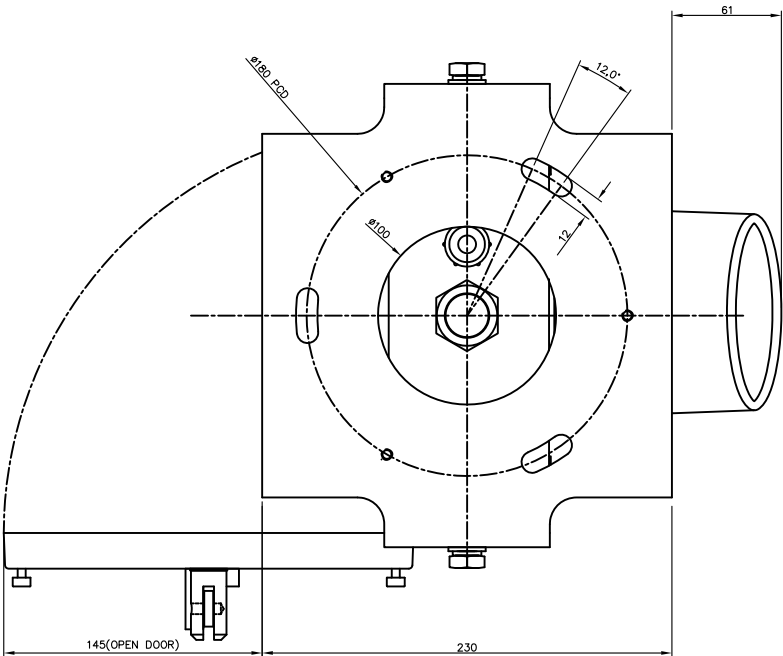
Uncontrolled When Printed



NOTE:
SIGNALS ARE INTENDED TO BE
MOUNTED IN INVERTED POSITION
HANGING FROM ROOF OF TUNNEL
VIA MOUNTING BRACKET

NOTES: -

- ALL ALUMINIUM COMPONENTS PAINTED ALL OVER WITH:
ONE COAT OF TRANSPED TWO PACK ETCH PRIMER 101
FOLLOWED BY :
ONE COAT OF BLACK MICACEOUS IRON OXIDE.
BR SPEC No. 70 ITEM 30. (FORWARD FACING PARTS)
ONE COAT OF LIGHT GREY MICACEOUS IRON OXIDE.
BR SPEC No. 70 ITEM 27A. (REAR FACING PARTS)
- WIRING DIAGRAM AND A DOCUMENT WALLET ATTACHED TO INTERNAL
FACE OF THE BACK COVER.
- ALL FASTENERS ~ STAINLESS STEEL.
- RKB221 BRASS PADLOCK, PADS No.0086/029003 IS NOT SUPPLIED
WITH THIS ASSEMBLY.



ITEM	QTY	DORMAN PART No.	DESCRIPTION
1	1	D86.85167	3 ASPECT ENCLOSURE & FRAME
2	1	M2TM2/R/Y/1/P/G	MODULE 2 ASPECT RED/YELLOW (PADS No. 086/009237)
3	1	M2TM2/G-/1/P/G	MODULE 1 ASPECT GREEN (PADS No. 086/009238)

TOTAL ASSEMBLED SIGNAL MASS ~ 12Kg.

DO NOT SCALE

DORMAN REF No.
M2TSH/3RYG/1P/R

CUSTOMER REF No.

ALL DIMENSIONS IN mm UNLESS OTHERWISE STATED

SPACE ENVELOPE/MECHANICAL INTERFACE DRAWING

TITLE
3 ASPECT (R/Y/G) MINIATURE TUNNEL SIGNAL (INVERTED MODULES)

THIRD ANGLE PROJ

Document N°

MATERIAL

TOLERANCES

X
X,0
X,00
X,000
ANGULAR

+ / -
+ / -
+ / -
+ / -
+ / -
0,25
0,10
0,05
0,025
0,25°

DRAWN C MCCANN

APPROVED IW

DATE 06/07/2011

SCALE NTS

SHEET 1 OF 1 SHEETS

DORMAN

SOUTHPORT ENGLAND

THIS DOCUMENT AND THE INFORMATION THEREIN
IS CONFIDENTIAL AND MAY NOT BE USED OR
DISCLOSED WITHOUT WRITTEN AUTHORIZATION

DRAWING No PART No.

086/009231

ISSUE

1