



Wennington Road, Southport PR9 7TN. England
Tel: 01704 518000 Fax: 01704 518001
WEB SITE <http://www.unipartdorman.co.uk>
E MAIL address – dorman.info@unipartdorman.co.uk

Health and safety

Every effort has been made to ensure the accuracy of the information given in our publications, but in accordance with our policy of continually improving our products we reserve the right to modify designs and specifications whenever necessary. All equipment is designed to conform to relevant British and International standards. Every care is taken to ensure that, as far as reasonably practical, it will perform without risk to health. It is essential that accepted codes of professional practice are followed in the assembly, installation and commissioning of the equipment. If in doubt with respect to any of these instructions, please consult Dorman before installing the device.

Dorman reserves the right to vary any component part to meet the required specifications without prior notice.

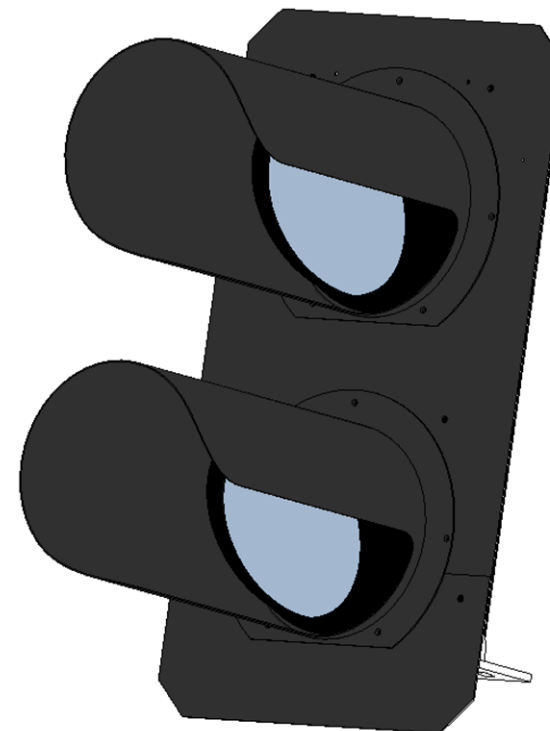


Certificate No. FM 14371

Dorman ref. No C64.65517_ISS 1

CLS LITE Visor Kits

To be read before commencing
Operation



General.

All local safety requirements affecting continued safe working environment of the signalling installation, either directly or indirectly should be carried out. It is the user's responsibility to ensure all necessary risk assessments, permissions to work and preparatory safety activities are correctly completed and adhered to.

The following visor kits are available with either R.H. or L.H. Obscuration:-

<u>Kit</u>	<u>Part Number</u>	<u>PADS Number</u>
CLS LITE 4 Aspect Visor Kit 550mm (135 Degree L.H. Obscuration)	D04.03686	086/007490
CLS LITE 4 Aspect Visor Kit 550mm (135 Degree R.H. Obscuration)	D04.03706	TBA
CLS LITE 3 Aspect Visor Kit 550mm (135 Degree R.H Obscuration)	D04.03996	086/008851
CLS LITE 3 Aspect Visor Kit 550mm (135 Degree L.H Obscuration)	D04.03997	086/008852
CLS LITE 4 ASPECT VISOR KIT 600mm	D04.03998	086/008853
CLS LITE 3 ASPECT VISOR KIT 600mm	D04.03999	086/008854
CLS LITE 4 ASPECT VISOR KIT 600mm (3/4 R.H)	D04.04000	086/008855
CLS LITE 4 ASPECT VISOR KIT 600mm (3/4 L.H)	D04.04001	086/008856
CLS LITE 3 ASPECT VISOR KIT 600mm (3/4 R.H)	D04.04002	086/008857
CLS LITE 3 ASPECT VISOR KIT 600mm (3/4 L.H)	D04.04003	086/008858
Individual Visor (3 Aspect Signals) (135 Degree L.H. Obscuration)	B20.19412	086/008863
Individual Visor (3 Aspect Signals) (135 Degree R.H. Obscuration)	B20.19474	086/008864
CLS LITE visor 600mm long	B20.19541	086/008859
CLS LITE visor 600mm long $\frac{3}{4}$ R.H	B20.19542	086/008860
CLS LITE visor 600mm long $\frac{3}{4}$ L.H	B20.19543	086/008861

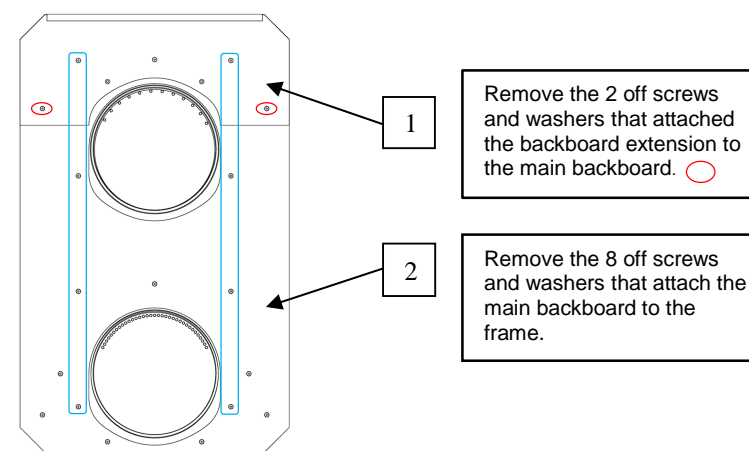
Fitting Instructions

4 Aspect Frames

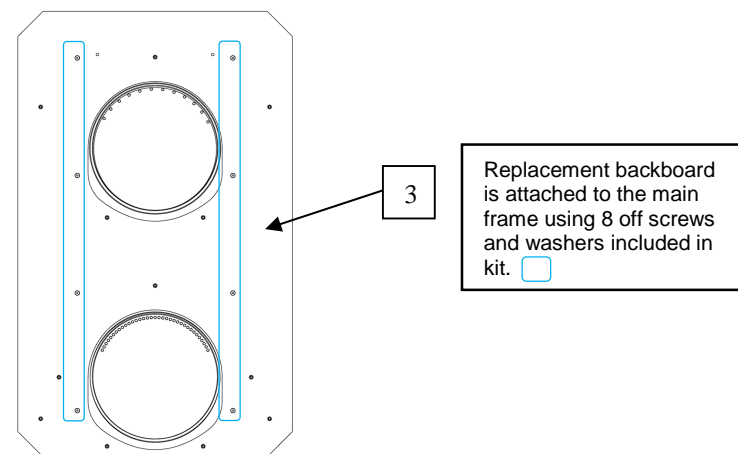
If visor kit is to be fitted on a 4 Aspect signal, the original backboard must be removed and replaced with backboard B60.59128, which is included in the visor kit.

Original backboard and fixings may be discarded according to local regulations.

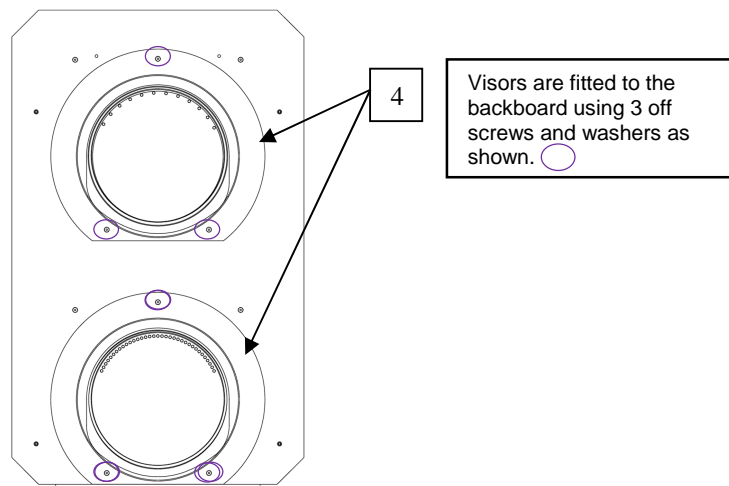
Remove the top backboard extension (1) then remove the frame backboard (2).



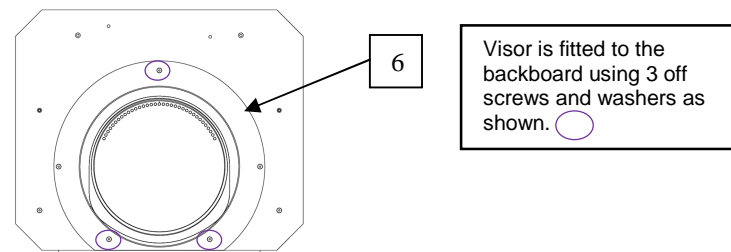
Replacement backboard (3) can now be fitted to the main frame using 8 off screws and washers supplied with the visor kit.



Visors (4) can now be fitted to the main backboard using 6 off screws and washers supplied with the visor kit.



Visor (6) can now be fitted to the main backboard using 3 off screws and washers supplied with the visor kit



If backboard extension requires refitting, this must be installed before fitting the lower visor using remaining screws and washers supplied with the visor kit.

3 Aspect Frames

If visor kit is to be fitted on a 3 Aspect short signal, the original backboard does not require removal as the visor fixings are already present.

Remove the top backboard extension (5)

