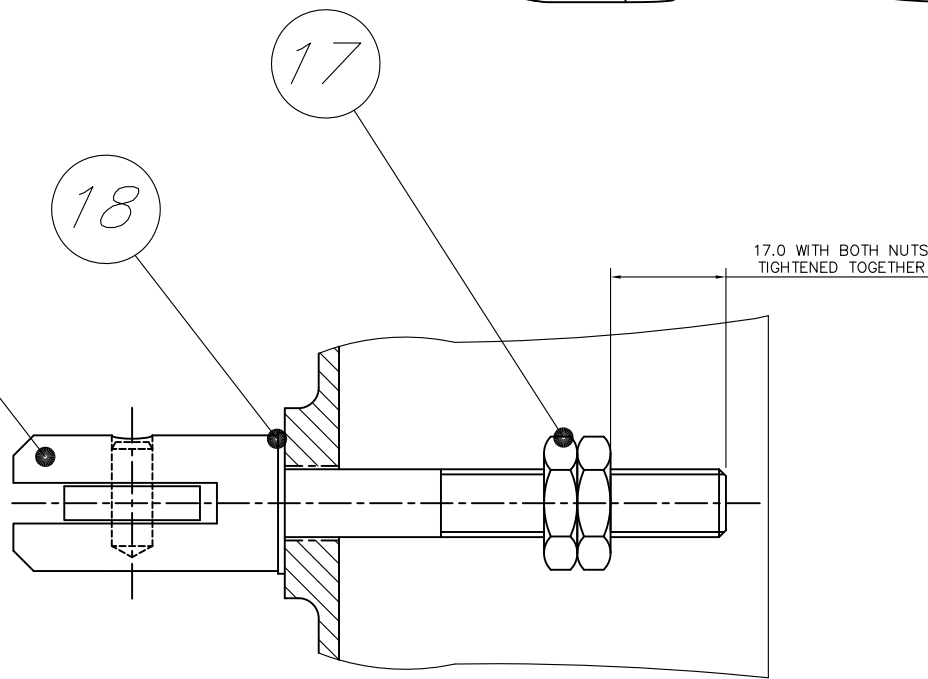


SIGNAL SHOWN WITH MOUNTING BRACKET



Parts List			
ITEM	QTY	PART NUMBER	TITLE
1	1	D81.80072	MSL CASTING ASSEMBLY
2	1	B81.80021	LOCKING BOLT ASSY
3	1	SLM1/RR/2/N/O	SLM ASSEMBLY RED FLASHING - OVERHEAD
4	1	SLM2/Y/Y/2/N/O	SLM ASSEMBLY YELLOW - OVERHEAD
5	1	C64.63440	TERMINAL LABEL
6	1	B19.18015	M32 GLAND
7	1	B19.18017	CABLE GLAND LOCKNUT
8	6	B18.17169	M6 x 50 SS BOLT
9	2	B18.17100	M5 x 16 SS POZI-PAN HD SCREW
10	1	B19.18016	CABLE GLAND WASHER
11	2	B09.08343	NEOPRENE GASKET
12	6	B18.17016	M6 INT SHAKEPROOF WASHER
13	2	B18.17060	M5 SPRING WASHER
14	2	B18.17022	M5 WASHER
15	2	B09.08134	REAR SEAL - SLM
16	1	B09.08342	GLAND PLUG
17	2	B17.16060	M10 LOCKNUT
18	1	B18.17080	M10 STAINLESS STEEL WASHER
19	2	B81.80026	VISOR
20	4	B18.17090	M8 x 10 GRUB SCREW
21	1	B14.13146	EARTH BONDING STRAP (100mm LONG)
22	2	B18.17170	M5 x 10 CAP HEAD SCREW
23	4	B18.17019	M5 INT SHAKEPROOF WASHER
24	1	C62.61176	TERMINAL BLOCK - 5way
25	1	C62.61182	FRONT/REAR CASTING SEAL
26	1	D81.80115	SIGNAL BACKBOARD ASSEMBLY
27	1	C64.63822	SIGNAL CASE LABEL
28	4	B14.13093	2BA RING TERMINAL
29	16	B17.16156	2BA NUT (SUPPLIED WITH TERMINAL BLOCK)
30	16	B17.16155	2BA WASHER (SUPPLIED WITH TERMINAL BLOCK)
31	4		TERMINAL SLIP LINK (SUPPLIED WITH TERMINAL BLOCK)
32	3	B19.18018	CABLE TIE
33	1	B14.13099	CABLE IDENT: 1'
34	1	B14.13100	CABLE IDENT: 2'
35	1	B14.13101	CABLE IDENT: 3'
36	1	B14.13102	CABLE IDENT: 4'
37	1	C64.63548	SIGNAL INSTALLATION LABEL
	1	B15.14004	CARTON FOR MOUNTING BRACKET
	1	D81.80077	MOUNTING BRACKET
	1	C64.63825	INSTALLATION INSTRUCTIONS



APPLY PENETRATING LOCTITE 290 TO TOP NUT AND WIPE OFF EXCESS

SITE INSTALLATION NOTE.

WHEN INSTALLING SIGNAL ONTO POST,ENSURE THE FOLLOWING TORQUE SETTINGS ARE MET:

4 OFF M6 SOCKET HD. SCREWS (CLAMPING BLOCK) – 6.8Nm

3 OFF M8 GRIP SCREWS (MIDDLE OF CLAMP BLOCK) – 6.8Nm

PEASE ENSURE THAT LOCKING BOLT BAR IS SECURED TO COVER USING CABLE TIE PRIOR TO PACKING MSL ASSEMBLY.

AFTER UNIT IS FULLY ASSEMBLED, FIX TIED LABEL TO LOCKING BOLT WITH PART NUMBER & DESCRIPTION.

ASSEMBLE IN ACCORDANCE WITH DCIH1/R Y/2/N/OWI
TEST IN ACCORDANCE WITH DCIH1/RW/2/PN/OWTR

MOUNTING BRACKET PART No. D81.80077 TO BE DELIVERED WITH EACH SIGNAL.

ISS	DATE	INI	ALTERATIONS
4	04/08/14	MD	SEE ECN628_9
3	20/04/10	MD	SEE DCC No. 5120
2	16/03/10	MD	SEE DCC No. 5092
1	24/09/09	MD	SEE DCC No. 4830
0	15/09/08	MD	DCC No.4008

DORMAN

TITLE
LED POINTS INDICATOR 24V FLASHING RED -STEADY YELLOW

MATERIAL	TOLERANCES
X	+ / - 0,25
X,0	+ / - 0,10
X,00	+ / - 0,05
X,000	+ / - 0,025
ANGULAR	+ / - 0,25°

PROJECT No. 129

THIRD ANGLE PROJ

Document N° 0125-9589-

DRAWN M DURHAM

CHECKED IW AUTH. IW

DATE 04/02/2008

SCALE NTS

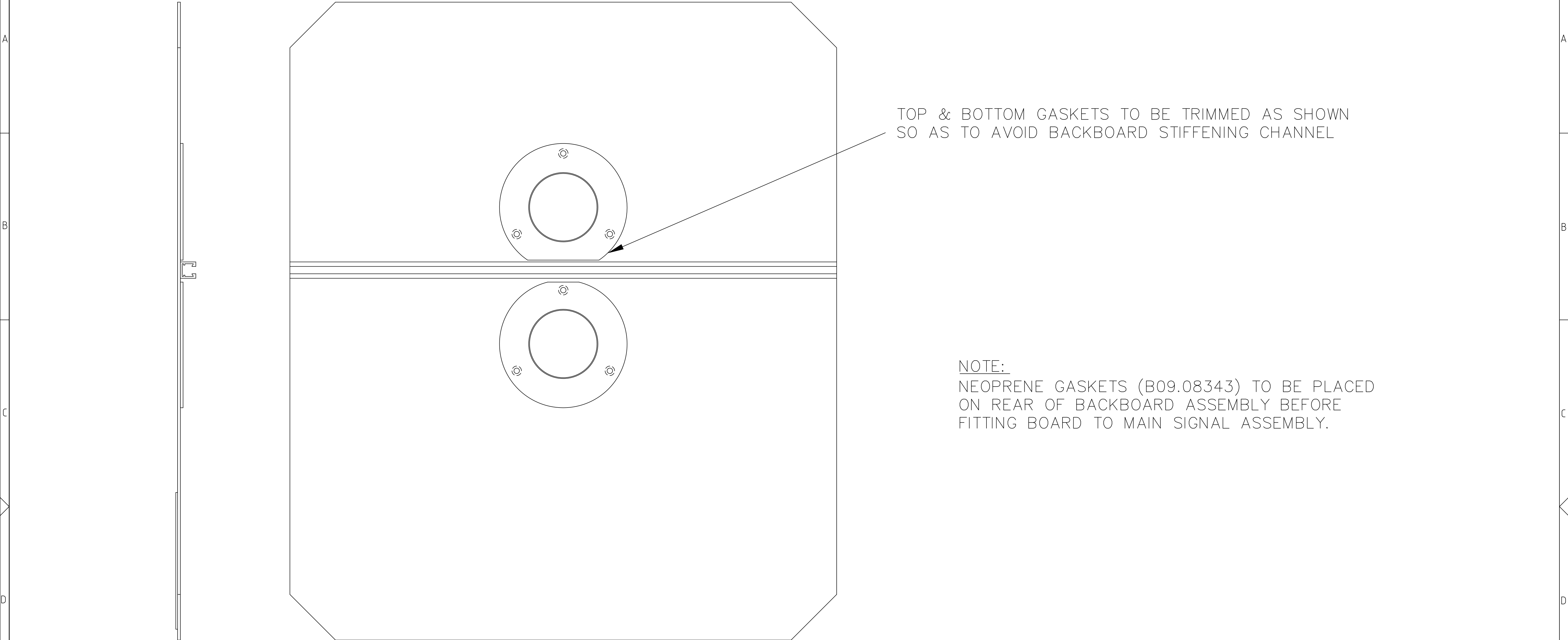
SHEET 1 OF 3 SHEETS

THIS DOCUMENT AND THE INFORMATION THEREIN IS CONFIDENTIAL AND MAY NOT BE USED OR DISCLOSED WITHOUT WRITTEN AUTHORIZATION

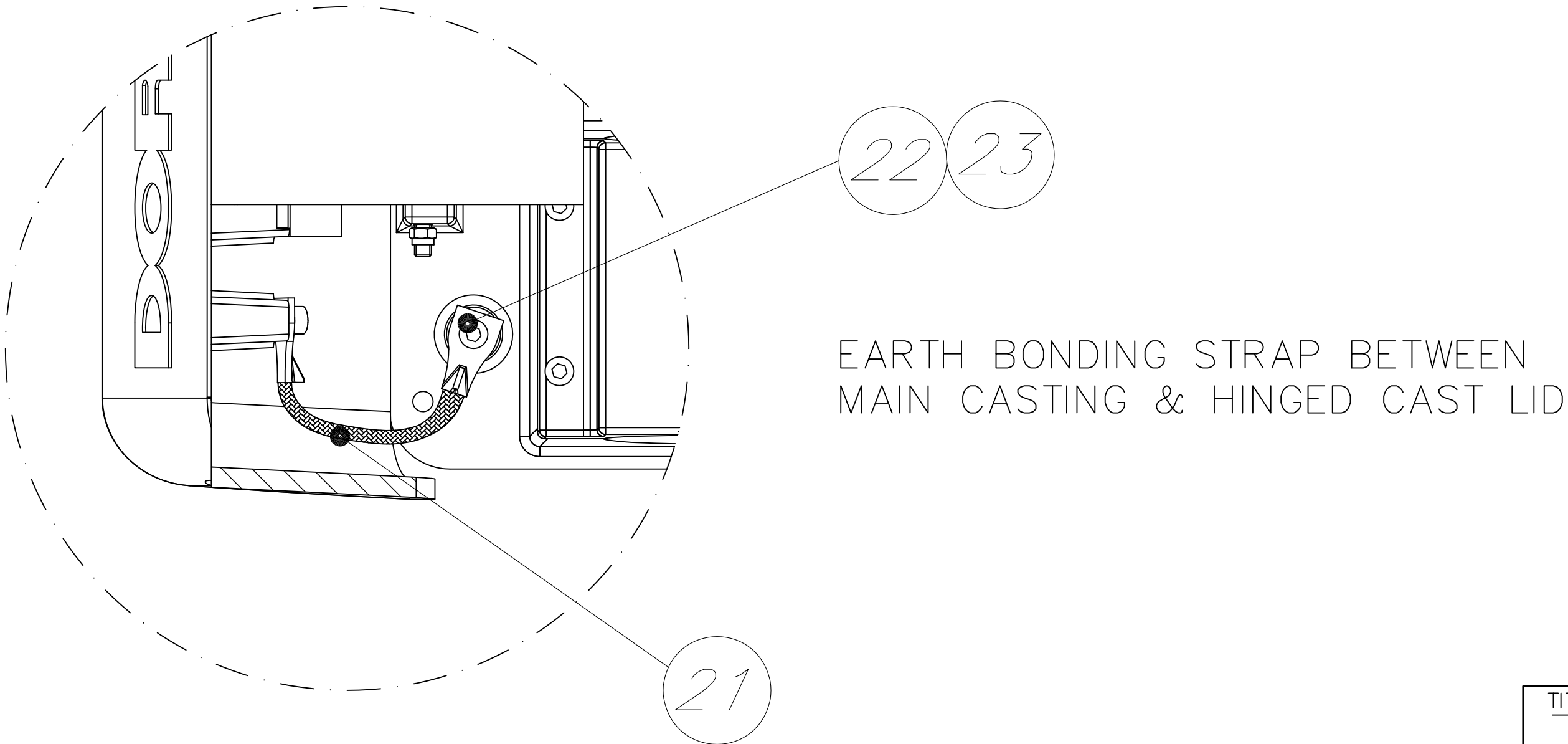
DRAWING No PART No.

DPIH1/R Y/2/N/O

DO NOT SCALE



NOTE:
NEOPRENE GASKETS (B09.08343) TO BE PLACED
ON REAR OF BACKBOARD ASSEMBLY BEFORE
FITTING BOARD TO MAIN SIGNAL ASSEMBLY.

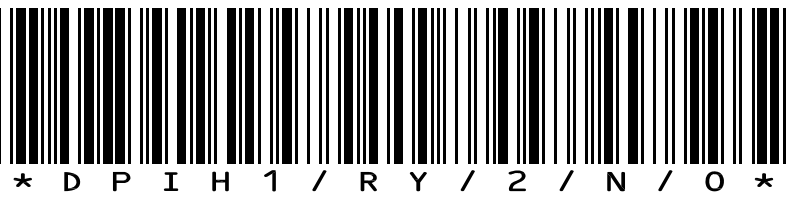


4	04/08/14	MD	SEE ECN628_9
3	20/04/10	MD	SEE DCC No. 5120
2	16/03/10	MD	SEE DCC No. 5092
1	24/09/09	MD	SEE DCC No. 4830
0	15/09/08	MD	DCC No.4008
ISS	DATE	INI	ALTERATIONS

THIS DOCUMENT AND THE INFORMATION THEREIN
IS CONFIDENTIAL AND MAY NOT BE USED OR
DISCLOSED WITHOUT WRITTEN AUTHORIZATION

DRAWING No PART No.

DPIH1/R Y/2/N/O



DO NOT SCALE

DORMAN REF No.	CUSTOMER REF No.
	086/017721

TITLE LED POINTS INDICATOR 24V FLASHING RED -STEADY YELLOW		PROJECT No. 129	
MATERIAL		THIRD ANGLE PROJ	
		Document N° 0125-9589-	
		DRAWN M DURHAM	
		CHECKED IW	AUTH. IW
		DATE	04/02/2008
		SCALE	NTS
		SHEET 2	OF 3 SHEETS

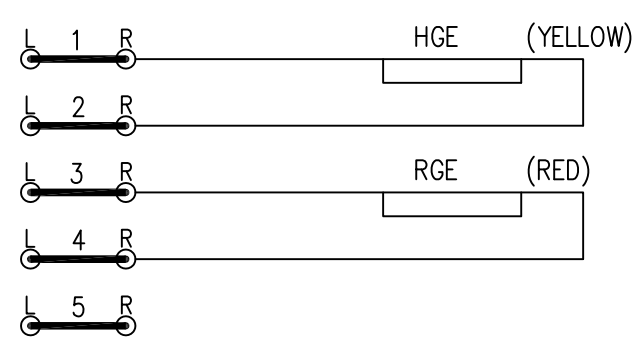
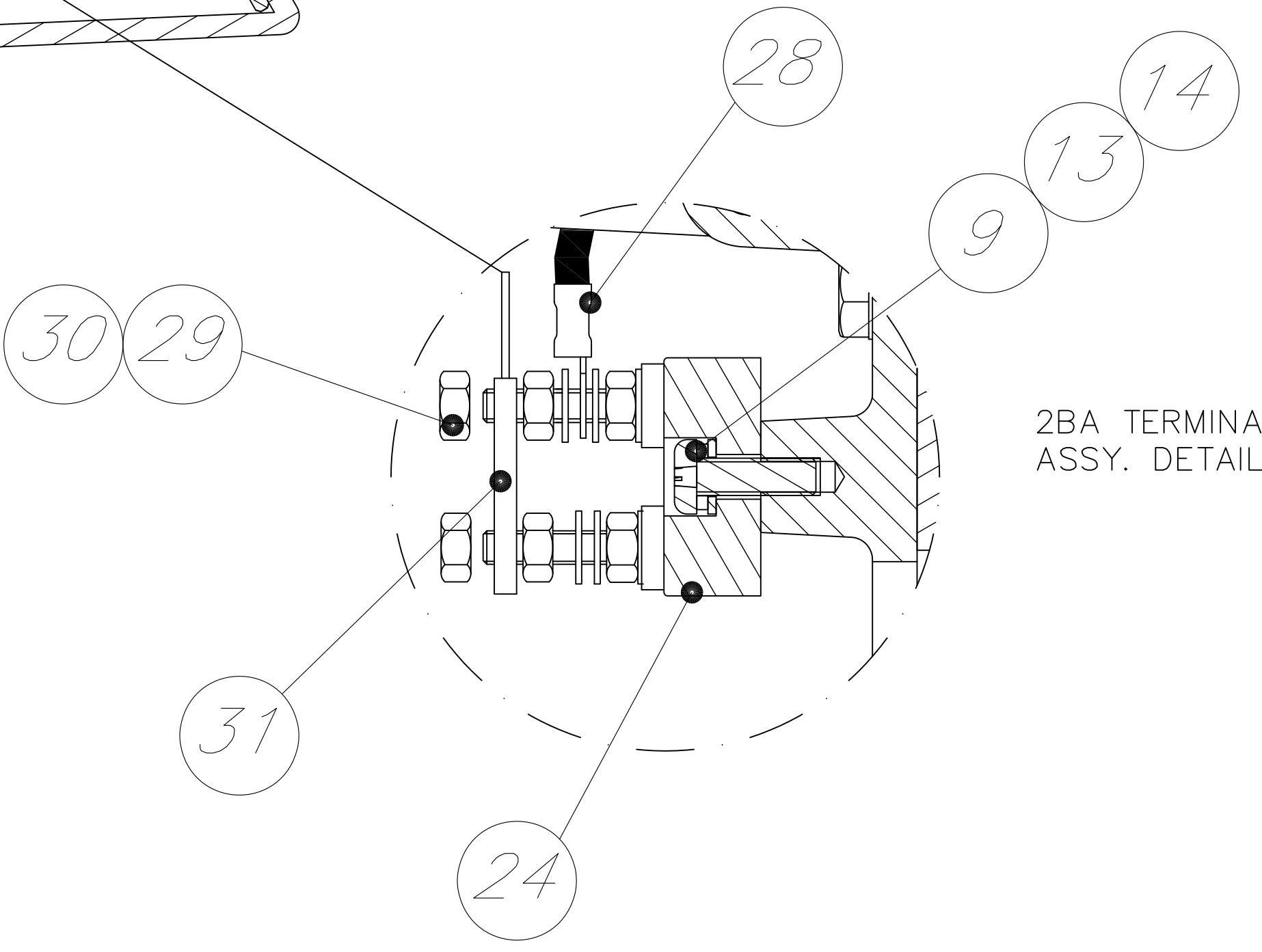
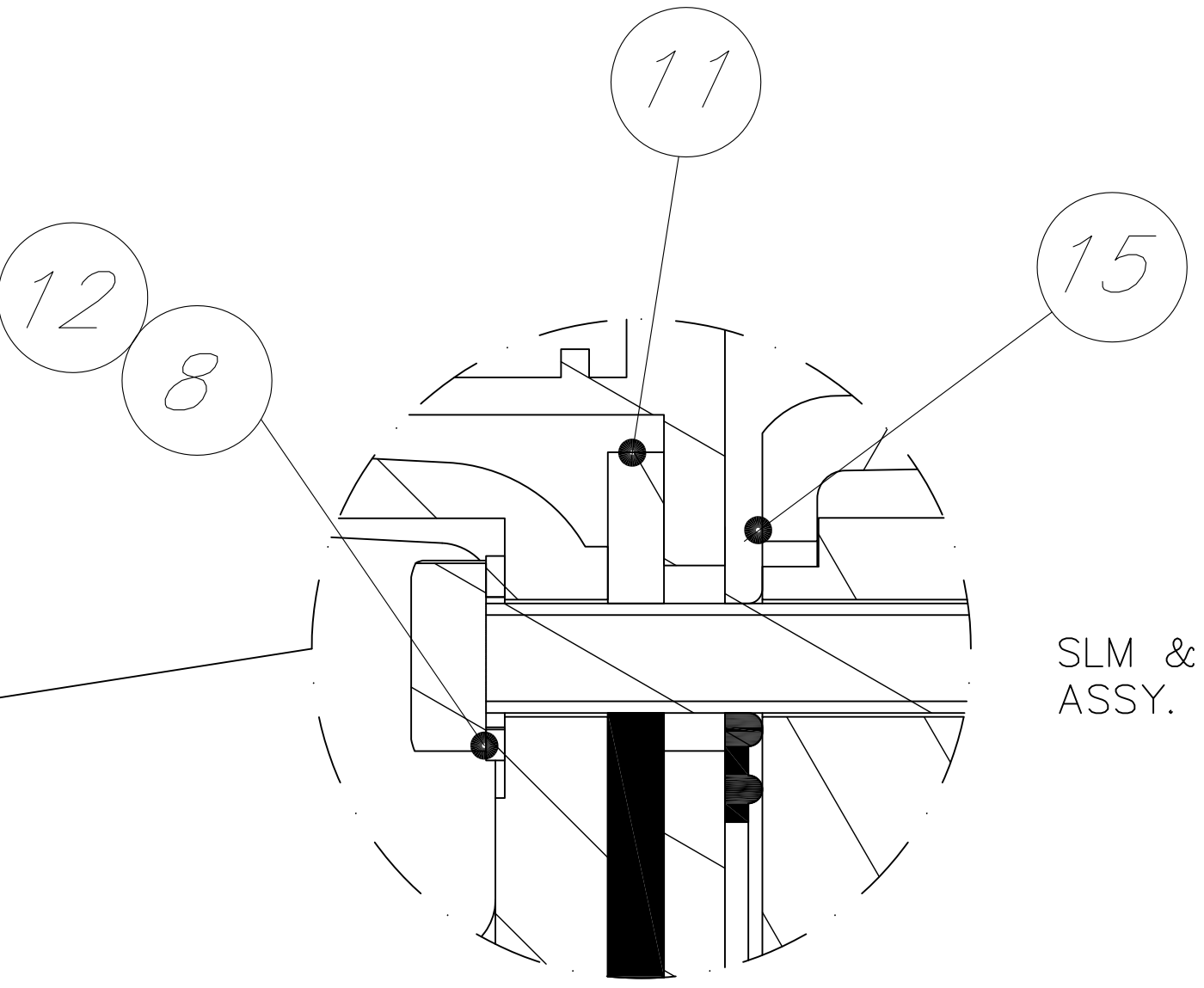
X	+	/	-	0,25
X,0	+	/	-	0,10
X,00	+	/	-	0,05
X,000	+	/	-	0,025
ANGULAR	+	/	-	0,25°

ALL DIMENSIONS IN mm UNLESS OTHERWISE STATED

SECTION VIEW SHOWN
WITHOUT VISORS FITTED

25

START & FINISH POINT
OF SEAL TO BE HERE



* D P I H 1 / R Y / 2 / N / O *

ALL DIMENSIONS IN mm UNLESS OTHERWISE STATED

DORMAN REF No.

CUSTOMER REF No.
086/017721

TITLE			
LED POINTS INDICATOR 24V FLASHING RED -STEADY YELLOW			
MATERIAL		TOLERANCES	
X		+ / -	0,25
X,0		+ / -	0,10
X,00		+ / -	0,05
X,000		+ / -	0,025
ANGULAR		+ / -	0,25°

PROJECT No. 129	
THIRD ANGLE PROJ	
Document N° 0125-9589-	
DRAWN M DURHAM	
CHECKED IW	AUTH. IW
DATE 04/02/2008	
SCALE NTS	
SHEET 3 OF 3 SHEETS	

4	04/08/14	MD	SEE ECN628_9
3	20/04/10	MD	SEE DCC No. 5120
2	16/03/10	MD	SEE DCC No. 5092
1	24/09/09	MD	SEE DCC No. 4830
0	15/09/08	MD	DCC No.4008
ISS	DATE	INI	ALTERATIONS

DORMAN

THIS DOCUMENT AND THE INFORMATION THEREIN
IS CONFIDENTIAL AND MAY NOT BE USED OR
DISCLOSED WITHOUT WRITTEN AUTHORIZATION
DRAWING No PART No.
DPIH1/RY/2/N/O

DO NOT SCALE