

DETAIL OF POST MOUNT & CLAMPING  
ARRANGEMENT.  
NOTE: THIS SECTION IS COVERED BY  
CLOSURE OF THE HINGED DOOR FOR  
ANTI-VANDAL PURPOSES.

**SITE INSTALLATION NOTE**

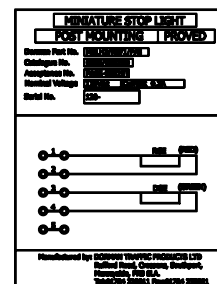
WHEN INSTALLING MSL ONTO POST,  
ENSURE THE FOLLOWING TORQUE  
SETTINGS ARE MET:  
4 OFF M6 SOCKET HD. SCREWS  
(CLAMPING BLOCK) - 6.8Nm.  
3 OFF M8 GRIP SCREWS (MIDDLE OF  
CLAMP BLOCK) - 6.8Nm.

TOTAL ASSEMBLED SIGNAL MASS = 17kg.

Parts List				
ITEM	QTY	PART NUMBER	TITLE	MATERIAL
1	1	B20.19185	MSL BACKBOARD ASSY	ALUMINIUM
2	1	B81.80021	LOCKING BOLT ASSY	MILD STEEL (ZINC PLATED)
3	1	SLM2/G-1/P/G	SLM ASSEMBLY GREEN - GROUND PADS No.0086/001299	ALUMINIUM
4	1	SLM2/R-1/P/G	SLM ASSEMBLY RED - GROUND PADS No.0086/001294	ALUMINIUM
5	1	B81.70002	MAIN HOUSING ASSEMBLY	ALUMINIUM
6	2	B81.80000M003	VISOR (250 LONG)	ALUMINIUM

**NOTES:**

- ALL ALUMINIUM COMPONENTS PAINTED ALL OVER WITH:  
POWDER COAT USING FERRO 384-70059  
GREY FINE TEXTURE (COLOUR TO BS4800 00-A-05 GREY).
- WIRING DIAGRAM ATTACHED TO INNER FACE OF COVER.
- ALL FASTENERS - STAINLESS STEEL
- RKB221 BRASS PADLOCK, PADS No. 0086/029003 IS NOT  
SUPPLIED WITH THIS ASSEMBLY.



PRODUCT / WIRING DIAGRAM  
LABEL DETAIL  
FIXED TO INSIDE REAR DOOR

2	02/03/06	MD	SEE DCC No.3079
1	23/11/05	MD	SEE DCC No.2973
0	11/08/05	MD	DCC No. 2861
ISS	DATE	INI	ALTERATIONS
<b>DORMAN</b>			
DORMAN TRAFFIC PRODUCTS LTD SOUTHPORT PR9 6LA ENGLAND			
THIS DOCUMENT AND THE INFORMATION THEREIN IS CONFIDENTIAL AND MAY NOT BE USED OR DISCLOSED WITHOUT WRITTEN AUTHORIZATION			
DRAWING No		PART No.	ISSUE
0086/009260			2

TITLE		THIRD ANGLE PROJ	
MSL ASSEMBLY (PHONE CROSSING OPERATOR)		Document N° d119-2617-1	
MATERIAL		TOLERANCES	
X		0.25	
X.0		0.10	
X.00		0.05	
X.000		0.025	
ANGULAR		0.25°	
DRAWN M.DURHAM		APPROVED L.GREEN	
DATE 11/08/2005		SCALE NTS	
SHEET 1 OF 1		SHEETS	