



Wennington Road, Southport PR9 7TN. England
Tel: 01704 518000 Fax: 01704 518001
WEB SITE <http://www.unipartdorman.co.uk>
E MAIL address – dorman.info@unipartdorman.co.uk

Health and safety

Every effort has been made to ensure the accuracy of the information given in our publications, but in accordance with our policy of continually improving our products we reserve the right to modify designs and specifications whenever necessary. All equipment is designed to conform to relevant British and International standards. Every care is taken to ensure that, as far as reasonably practical, it will perform without risk to health. It is essential that accepted codes of professional practice are followed in the assembly, installation and commissioning of the equipment. If in doubt with respect to any of these instructions, please consult Dorman before installing the device.

Dorman reserves the right to vary any component part to meet the required specifications without prior notice.



Certificate No. FM 14371

Dorman ref. No C64.63899 ISS 2

LED Universal Semaphore Lamp USL2/WW/P/B-/LG (Internal Supply - Low Intensity) Ground Mounted Installation Instructions

To be read before commencing
Operation



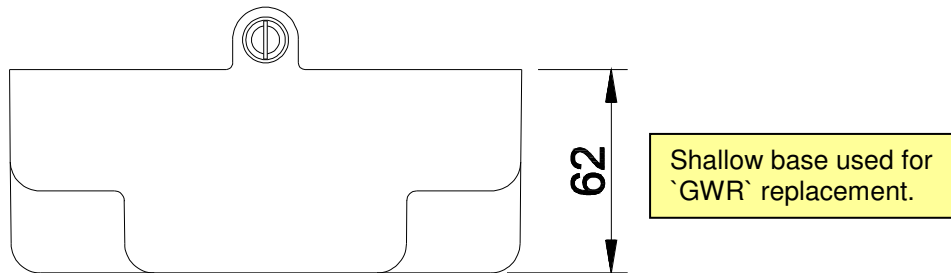
INSTALLATION INSTRUCTIONS

It is recommended that this unit is installed by a qualified electrician and installed in accordance with the relevant track and signal code of practice.

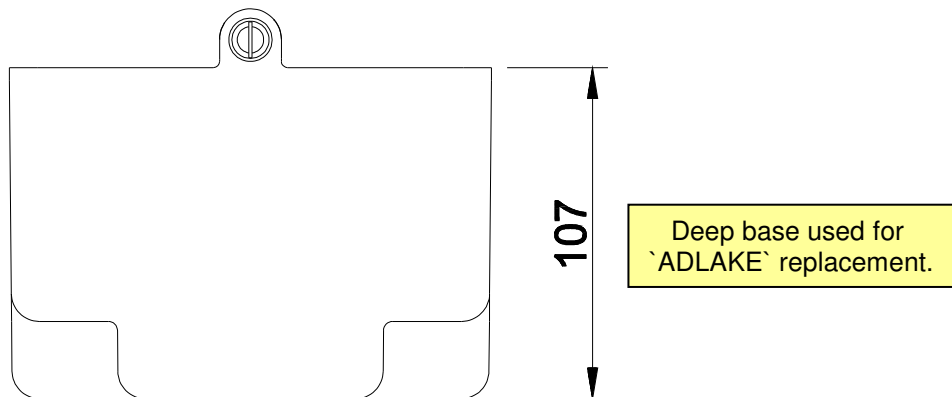
Please Note:- The serviceable parts inside this unit are batteries only.

GENERAL

The Universal Semaphore Lamp (USL) is designed to replace a number of existing Semaphore Lamps. To enable this, the USL is supplied with two base units GWR and ADLAKE types:



THIS IS A BLANK PAGE



The correct base should be selected to suit the particular signal requirements.

BATTERY INSERTION/REPLACEMENT

INSERTION:

Two batteries (DAAB 50 – Part No. B13.12170). These should be inserted into the main body assembly ensuring they are located on either side of the rear viewing lens. See below.

When the batteries have been fitted then locate under battery retainer as show below. The main body assembly can then be fitted to the base unit by pushing it over the base until a locating `click` is felt and the main assembly cannot be pushed any further into the main unit. Please ensure that the knurled screw is retightened to secure the main body assembly is secured to the base.

REPLACEMENT:

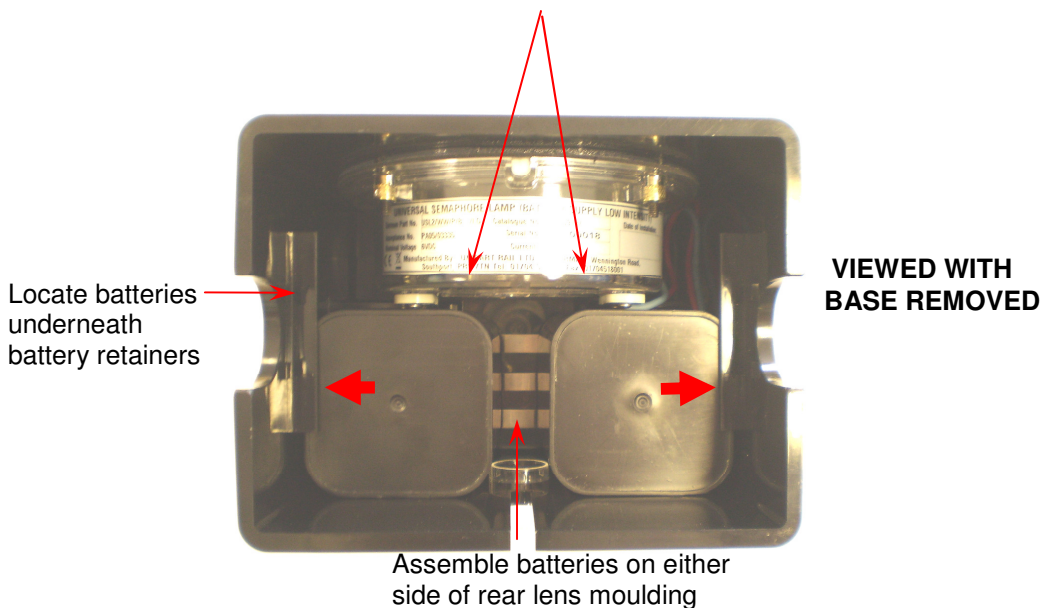
To replace the batteries, unscrew the knurled nut on the rear of the unit, the main body assembly can now be removed from the base by applying a slight force on both sides of the main body and pull the base away from the main unit.

Replacement batteries can now be fitted as described above.

As the circuit box has a double battery contact assembly, the need for battery orientation is eliminated when inserting the new batteries.

EXAMPLE OF INSTALLING 6V BATTERIES TO LAMP ASSEMBLY:

2X DAAB 50 6V Batteries



SPECIFICATION:-

Product Acceptance Number:	PA05/03335
Compliant with:	Railway Group Standard GK/RT/0045
PADS Number:	086/009197
Part No.	USL2/WW/P/B-/LG
Nominal Supply Voltage:	6VDC
Nominal Current:	25mA
Weight:	2kg max (batteries fitted)
Replacement Air Alkaline Batteries:	054/128366

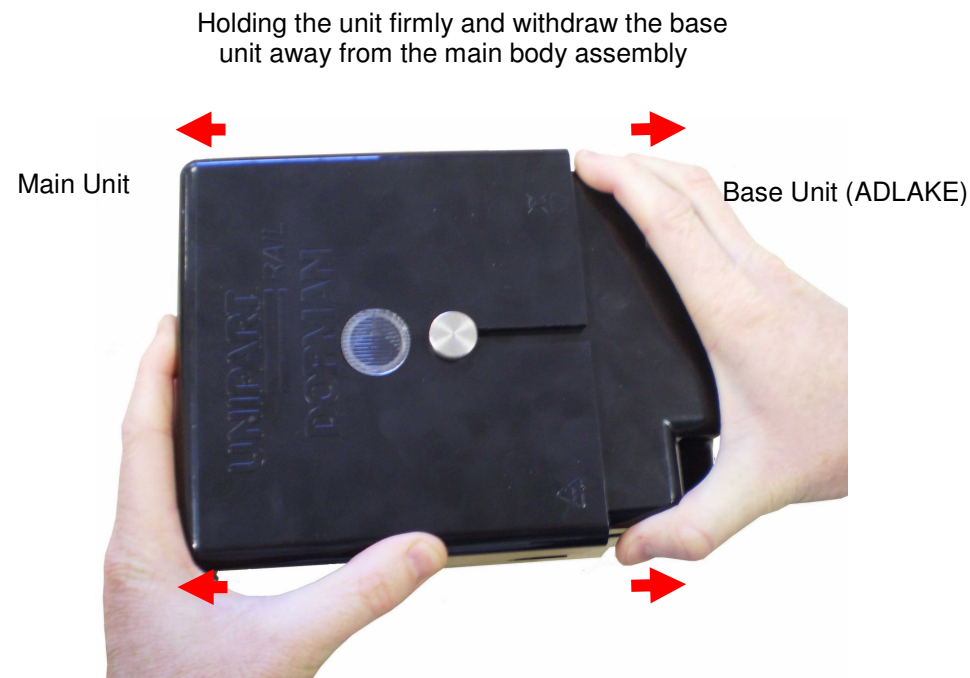


SPECTACLE FILTERS (Only to be used in conjunction with LED light sources)

229 x Ø171 (OVAL) Red	086/009026
229 x Ø171 (OVAL) Yellow	086/009027
Ø222 (ROUND) Green	086/009028
205 x Ø124 (OVAL) Red	086/009029
205 x Ø124 (OVAL) Yellow	086/009030
Ø162 (ROUND) Green	086/009031
Ø174.62 (ROUND) Red	086/009032
Ø175 (ROUND) Yellow	086/009033
Ø55.6 (ROUND) Red	086/009034
Ø63.5 (ROUND) Yellow	086/009035
Ø63.5 (ROUND) Red	086/009036
User Specified - Red	086/009037
User Specified - Yellow	086/009038
User Specified - Green	086/009039

MOUNTING OF USL BASE

The USL base should be positioned in such a manner so as to give maximum illumination through the mechanical Semaphore Arm Spectacle.
To separate the main body from the unit, loosen knurled base securing screw and then apply even pressure to both sides of the main body and withdraw the base unit as shown below.



LOCATING BASE UNIT

The base has three drilling positions formed in the moulding. These can be used as a drilling template, if required, for fixing the base to the mounting bracket of the main Semaphore assembly.
If an alternative mounting position is required, then the base may be drilled to suit. Two sets of M8 fixings are supplied with each lamp, however other size fixings may be used at installers discretion.