



Wennington Road, Southport PR9 7TN. England  
Tel: 01704 518000 Fax: 01704 518001  
WEB SITE <http://www.unipartdorman.co.uk>  
E MAIL address – [dorman.info@unipartdorman.co.uk](mailto:dorman.info@unipartdorman.co.uk)

#### Health and safety

Every effort has been made to ensure the accuracy of the information given in our publications, but in accordance with our policy of continually improving our products we reserve the right to modify designs and specifications whenever necessary. All equipment is designed to conform to relevant British and International standards. Every care is taken to ensure that, as far as reasonably practical, it will perform without risk to health. It is essential that accepted codes of professional practice are followed in the assembly, installation and commissioning of the equipment. If in doubt with respect to any of these instructions, please consult Dorman before installing the device.

Dorman reserves the right to vary any component part to meet the required specifications without prior notice.



Certificate No. FM 14371  
Dorman ref. No C64.63911 Iss3

---

## 24VDC LED Points Indicator (Ground) Installation Instructions

---

To be read before commencing  
Operation



## Installation Instructions

### **ALWAYS TURN OFF ELECTRICITY AT MAINS BEFORE COMMENCING WORK**

#### General.

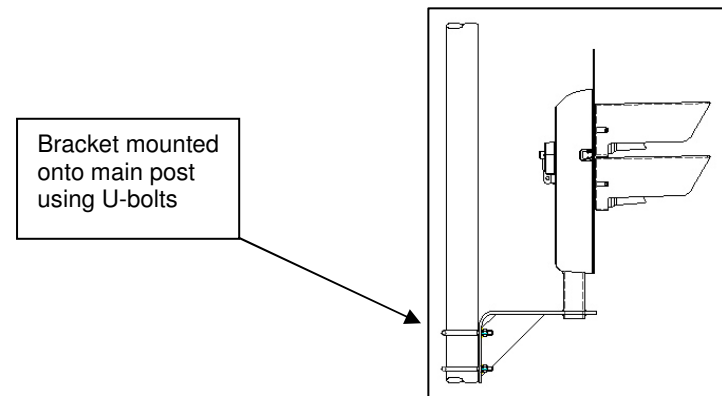
In general before commencing assembly, any local safety requirements affecting the safe working environment of the signalling installation either directly or indirectly should be carried out.

When the signal is fully assembled, the user should note that the assembled signal & interface bracket weigh a maximum of 27Kg. It is the user's responsibility to ensure that, if the unit is to be lifted then suitable certificated lifting apparatus and/or other precautions are employed.

The signal should only be assembled both electrically and mechanically, by staff deemed competent in these fields by their employer.  
The installation standards of the indicator should follow the general provisions of the Signalling Installation Handbook.

The signal is mounted onto the main mounting post (Ø89mm) using the interface bracket which incorporates the Ø60.3mm signal support post.

The interface bracket is secured to the main mounting post using the U-bolts provided with the interface bracket. The U-bolts are secured using M12 Nyloc nuts and plain washers.



The signal is affixed to the support post using its own integral post clamping block arrangement.

Unlock the main locking bolt, open hinged cover to reveal the post clamping block.

Unscrew the 4 off M6 socket head bolts to remove clamping block.

Mount signal unit onto the mounting post ensuring the top ring of the post is located in upper chamber above the clamping block area.

Locate and secure clamping block using the 4 off M6 socket head bolts (refer to clamping torque setting below).

Before tightening the clamp bolts, align LED Points Indicator to correct position.

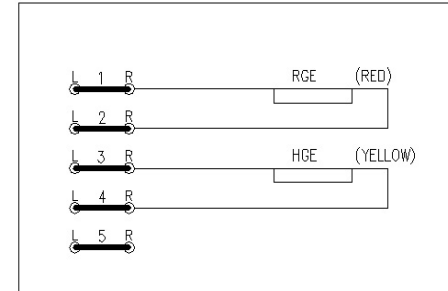
When tightening clamp bolts, ensure the clamping block is kept square to main signal body and tighten each bolt gradually as sequence shown until required torque is reached.

When the signal is mounted correctly, the three M8 centrally mounted screws in the clamping block may be tightened (refer to clamping torque setting below).

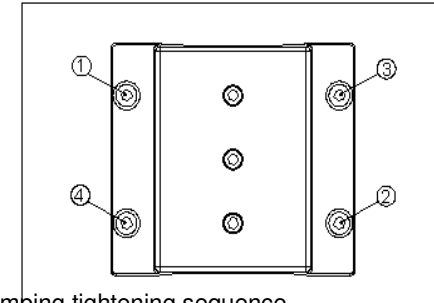
#### Clamping Torque Settings

4 Off - M6 Socket Head Screws – 5mm A/F Hex bit (Clamping Block) – 6.8Nm

3 Off – M8 Grip Screws – 4mm A/F Hex bit (Middle Clamping Block) – 6.8Nm



Signal connection arrangement



Clamping tightening sequence

#### Electrical Connections.

Access to the terminals to allow the wiring of the indicator signalling circuitry is affected by unlocking the main locking bolt. The signal cover can then be hinged open.

The incoming cable to the signal is routed through the support post on the interface bracket to the terminal blocks, through a gland at the bottom of the terminal chamber. When tightened, this gland will complete the sealing of the enclosure.

Within the terminal chamber, standard 2BA stud blocks are provided. Links are labelled as per the wiring diagram label affixed to the inner face of the terminal box.

PIDG ring crimps on each conductor locked down by 2BA nuts should be used in order to connect the tail cable to the stud block.

Temporary disconnection of each circuit may be achieved by use of sliding 2BA links.

When wiring is completed the cover can be located back onto the main body and main locking bolt tightened.

#### Approvals and Specifications.

Part Nos.

Pads No.

DCI Assembly

Interface Bracket

Operating Voltage

Nominal Operating Current

Dust/Water Ingress Rating

Weight

TBA

DPIH1/RV/2/N/G

D81.80077

24Vdc

Red: 0.15A @ 24 VDC

Yellow: 0.148A @ 24VDC

IP54

17Kg (Points Indicator Assembly)

10kg (Interface Bracket)