

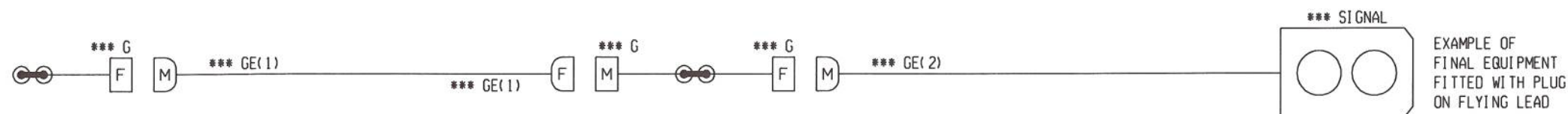
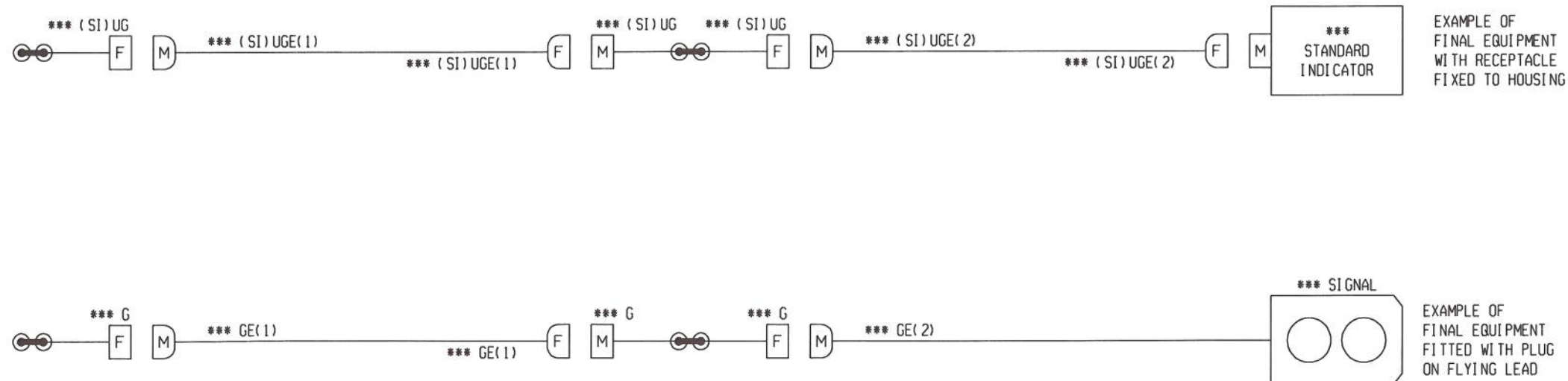
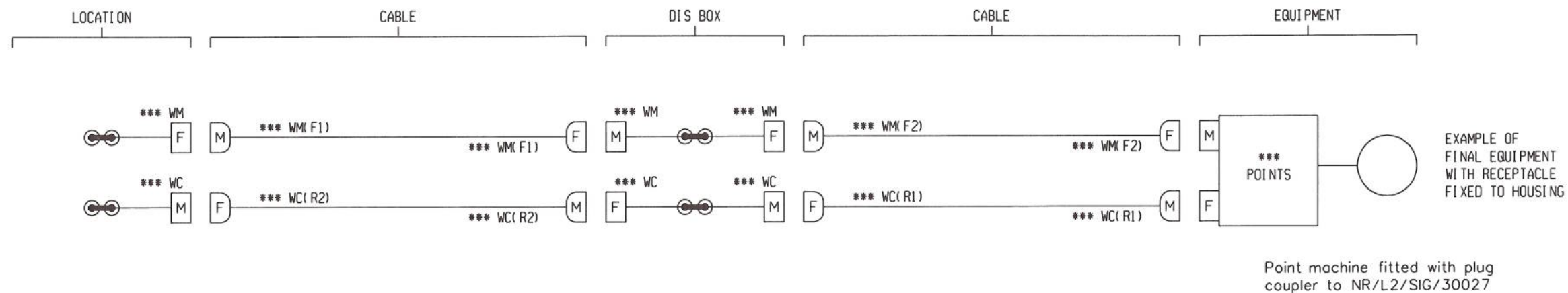
## Uncontrolled When Printed

### LABELLING

It is a mandatory requirement to label all signalling cables and equipment whether they are in the location, dis box or at the end function signalling equipment unit. The labelling technique should follow existing practice as documented in NR/GN/SIG/11701 Signalling Design: Production Guidance Part M sect 6.

For the application of plug couplers, in order to reduce the risk of plugging cables into the wrong receptacle, the cables and receptacles will be named after the end equipment. The naming shall be shown on the wiring diagrams and on the location equipment profile drawings, the additional schematics as shown here are not required.

Additional mitigation against cross connection is available via alternate insert positions. Refer to the manufacturer for details.



Version 1.0			Version			Version			Produced for Network Rail by			NR/GN/SIG/CAT005		Network Rail	
NEW SHEET									Network Rail SDG WESTERN			LINESIDE & ON TRACK		Drawing No	
									Produced			T00034		Version	
									Checked			04/12/2010		Date	
												1.0		Current	
														Version	