



Wennington Road, Southport PR9 7TN. England
Tel: 01704 518000 Fax: 01704 518001
WEB SITE <http://www.unipartdorman.co.uk>
E MAIL address – dorman.info@unipartdorman.co.uk

Health and safety

Every effort has been made to ensure the accuracy of the information given in our publications, but in accordance with our policy of continually improving our products we reserve the right to modify designs and specifications whenever necessary. All equipment is designed to conform to relevant British and International standards. Every care is taken to ensure that, as far as reasonably practical, it will perform without risk to health. It is essential that accepted codes of professional practice are followed in the assembly, installation and commissioning of the equipment. If in doubt with respect to any of these instructions, please consult Unipart Dorman before installing the device.

Unipart Dorman reserves the right to vary any component part to meet the required specifications without prior notice.



Certificate No. FM 14371

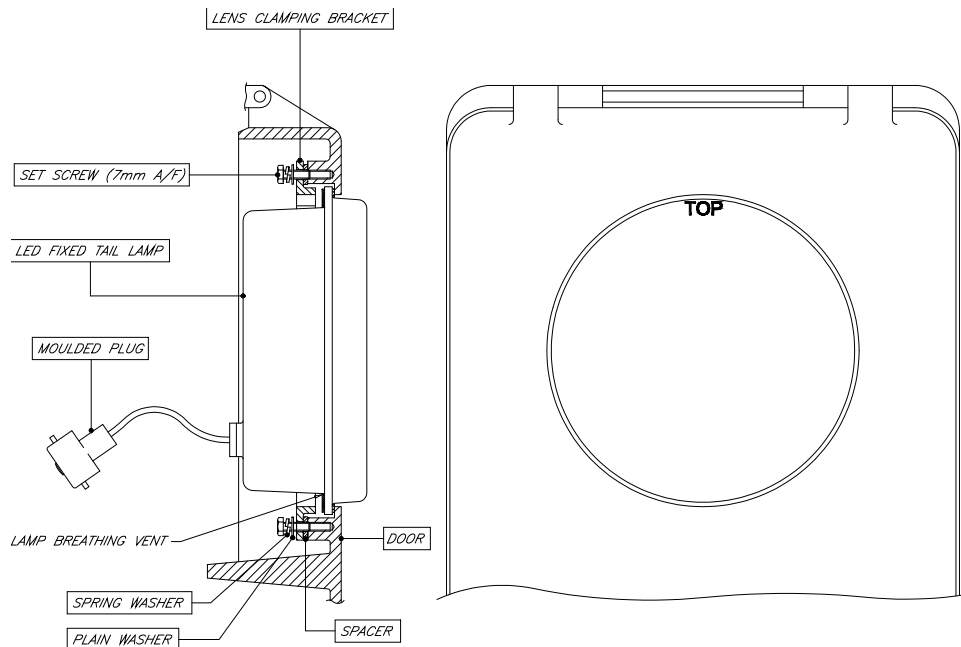
Dorman ref No.C64.63174 Iss 4
ECN1328_0

LED Fixed Tail Lamp

Installation Instructions
BMAC Double Enclosure

To be read before commencing
installation.





INSTALLATION INSTRUCTIONS

It is recommended that this unit is installed by a qualified electrician and wired in accordance with the relevant track and signal code of practice.

Please Note:- There are no serviceable parts inside.

1. Undo the door clamp bolts, open door and remove the existing tungsten lamp.
2. Remove the existing lens and its fixings. **Retain the 2 lens clamp brackets.**
3. Clean the internal surfaces of the door. All traces of the old sealant and paint must be scraped from around the lens aperture and clamp bracket pillars.
4. Offer the LED Fixed Tail Lamp into the door and secure using the previously removed lens clamping brackets and supplied set screws, washers and spacers. The spacers must be assembled between clamps and pillars and the clamps replaced the correct way round. Ensure the Tail Lamp is correctly orientated. ('**TOP**' marked on lens to be uppermost)
5. Connect the moulded plug into the bayonet lamp holder.
6. Close the door and fully tighten door clamp bolts.

Specification

Tail Lamp

Dorman

Part Number

Description

LFT2N/R/01/B/02

110V LED Fixed Tail Lamp for BMAC Double Enclosure
(Includes Fitting Kit, Dorman Part No D70.69004)



Disposal Instructions:-

Disposal in accordance with local and national regulations.