



Wennington Road, Southport PR9 7TN. England
Tel: 01704 518000 Fax: 01704 518001
WEB SITE <http://www.unipartdorman.co.uk>
E MAIL address – dorman.info@unipartdorman.co.uk

Health and safety

Every effort has been made to ensure the accuracy of the information given in our publications, but in accordance with our policy of continually improving our products we reserve the right to modify designs and specifications whenever necessary. All equipment is designed to conform to relevant British and International standards. Every care is taken to ensure that, as far as reasonably practical, it will perform without risk to health. It is essential that accepted codes of professional practice are followed in the assembly, installation and commissioning of the equipment. If in doubt with respect to any of these instructions, please consult Unipart Dorman before installing the device.

Unipart Dorman reserves the right to vary any component part to meet the required specifications without prior notice.



Certificate No. FM 14371

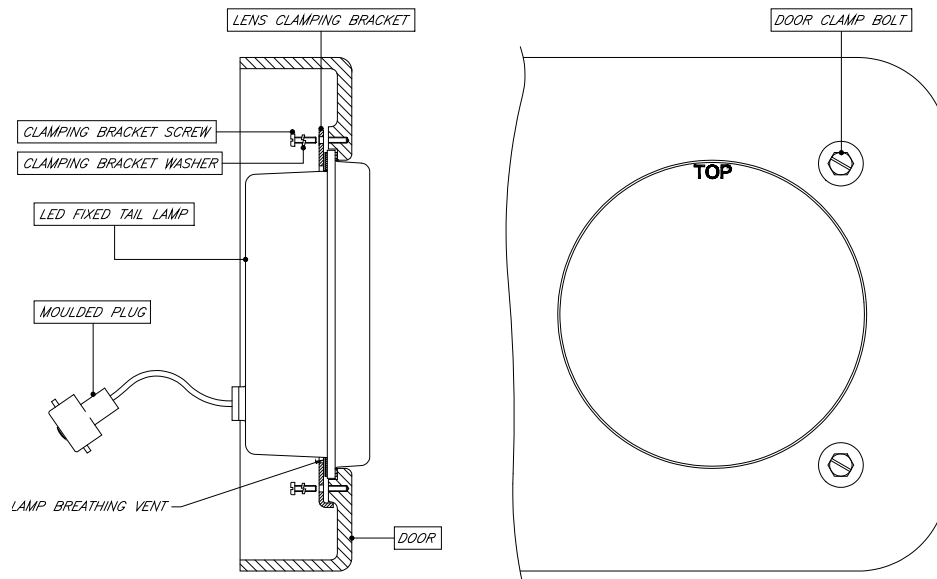
Dorman ref No.C64.63175 Iss 5
ECN1328_0

LED Fixed Tail Lamp

Installation Instructions
BMAC Triple Enclosure

To be read before commencing
installation.





INSTALLATION INSTRUCTIONS

It is recommended that this unit is installed by a qualified electrician and wired in accordance with the relevant track and signal code of practice.

Please Note: - There are no serviceable parts inside.

1. Undo the door clamp bolts, open door and remove the existing tungsten lamp.
2. Remove the three lens clamping brackets and discard the six screws and washers. **It is important that the lens clamping brackets are retained.**
3. Remove the existing lens and clean the internal surfaces of the door
All traces of the old sealant must be removed from around the lens aperture.
4. Offer the LED Fixed Tail Lamp into the door and secure using the previously removed lens clamping brackets and the supplied fixing screws and washers. Ensure the Tail Lamp is correctly orientated. ('**TOP**' marked on lens to be uppermost)
5. Partially close the door to allow the moulded plug to be connected in the bayonet lamp holder.
6. Close the door and fully tighten door clamp bolts.

Specification

Tail Lamp

Dorman

Part Number

Description

LFT2N/R/01/B/03	110V LED Fixed Tail Lamp for BMAC Triple Enclosure (Includes Fitting Kit, Dorman Part No D70.69005)
LFT2N/R/02/B/03	24V LED Fixed Tail Lamp for BMAC Triple Enclosure (Includes Fitting Kit, Dorman Part No D70.69005)
LFM2N/W/01/B/03	110V LED Fixed Marker Lamp for BMAC Triple Enclosure (Includes Fitting Kit, Dorman Part No D70.69005)



Disposal Instructions:-

Disposal in accordance with local and national regulations.