

Certificate of Acceptance

PA05/06503

Manufacturer:
Unipart Rail Dorman

Issue : 7
Valid From : 24-05-2023

Assisted Lift Trunnion & Heavy Duty Assisted Lift Trunnion

Product Description

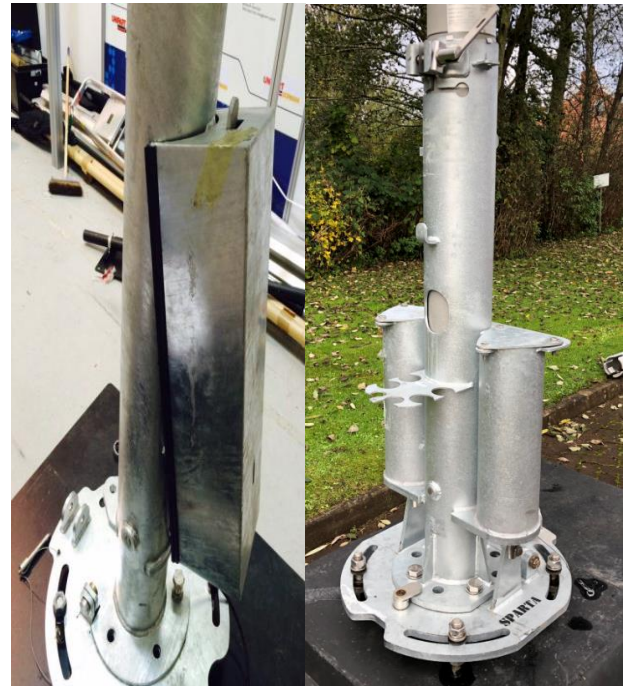
The Assisted Lift Trunnion (ALT) has been designed to install the Unipart Dorman Integrated Lightweight Signal range, CLS LITE signal heads and CCTV equipment by reducing the human effort required to install, erect and lower signals.

The HD ALT is also used to install Unipart Dorman's Lightweight Signal range, the Offset Post, Classic Colour Light Signals and Route Indicators. It has the same function as the existing Assisted Lift Trunnion (ALT), but with increased capability to cover larger and more complex signal heads.

Both Assisted Lift Trunnions use a simple internal spring mechanism to store energy, as the signal is pivoted towards horizontal, so that some of the vertical effort required to lift a signal vertical is removed.

An L shape offset post manufactured to the customers requirement, with a maximum offset of 888mm is available to mount Classic Banner/PRI, 3 and 4 aspect CLS LITE signal heads only

Product Image



Scope of Acceptance

Full Acceptance


All products are approved for use on Network Rail Managed Infrastructure, within the controls and limitations defined on this certificate and in any associated documentation.

Network Rail Acceptance Panel (NRAP) hereby authorises the product above for use and trial use on railway infrastructure for which Network Rail is the Infrastructure Manager under the ROGS regulations.

Reviewed by:

Authorised by:

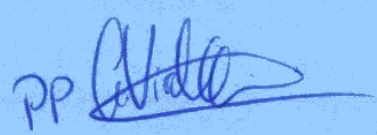
Authorised by:



Amir Malik
Product Acceptance Coordinator



Jordan Skey
Network Technical Head of Plant



Jerry Morling BEng MSc CEng MIET
MIRSE
Network Technical Head - Signalling

Please contact prodacc@networkrail.co.uk

Certificate of Acceptance

PA05/06503

Manufacturer:
Unipart Rail Dorman

Issue : 7
Valid From : 24-05-2023

Specific Conditions

The following Conditions are specific to the approved product/s contained within this Certificate. These conditions must be adhered to in addition to the Network Rail General Conditions contained within the "General Terms and Conditions" section.

Failure to adhere to these conditions may result in the withdrawal or suspension of Acceptance of some, or all of the items contained within the accepted configuration.

Manufacturer

- 1) See General Terms and Conditions at the rear of this certificate.

User: Signalling Contractors or IP Organisation (Maintainers, Installers, Testers, other users)

1.	The installation and maintenance of this product is only to be performed by persons that are trained and competent in accordance with the Original Equipment Manufacturer's instructions, their employers Competency Management System and the Network Rail competency frame work (as applicable).
2.	This certificate applies only to the ALT and HD ALT products – This does not denote acceptance of the attached post, signalling equipment or other associated components. Any fitments/attached assets mounted on this Trunnion must be subject to their own Product Acceptance review and must comply with the limitations defined within the reference documentation stated on this certificate
3.	It is the user's responsibility to ensure all necessary risk assessments, permissions to work and preparatory safety activities are correctly completed and adhered to throughout the installation and subsequent life of the signal post in accordance with the manufacturer's supporting documentation and Network Rail's Policy and practices
4.	Prior to each operation, this product must be subjected to a full visual inspection. If any defects or deficiencies occur prior to or during use all lifting-lowering activities must cease, the product must be reported as quarantined and the failure must be rectified by a competent Unipart representative before the product is reinstated into use.
5.	Installers must ensure that all associated cabling and leads are installed according to the dimensions specified in the manufacturer's drawings, so that any Interconnects and Leads are not placed under strain, nor do they introduce tripping, fire or other maintenance hazards.
6.	Assisted Lift Trunnion weight = approx. 80kg. Installation of the Assisted Lift Trunnion (ALT) shall ensure compliance of the manufacturer's handling and installation procedure, as laid out in the operation manual and in accordance with all applicable HSE guidelines and manual handling risk assessment processes.
7.	Heavy Duty Trunnion weight = approx. 160kg. Installation and transportation of the Heavy Duty Assisted Lift Trunnion (HD ALT), <u>SHALL BE</u> done by mechanical means using the two lifting eyes provided to ensure compliance of the manufacturer's handling and installation procedure, as laid out in the operation manual and in accordance with all applicable HSE guidelines and manual handling risk assessment processes.
8.	A minimum of 2 operators <u>SHALL BE</u> required to lift/lower the HD ALT. When the signalling post weight is over 75kg or an "L" Shape offset post is installed, a minimum of 3 operators shall be required to lift/lower the HD ALT.
9.	A label <u>SHALL BE</u> attached to the HD ALT indicating, "NOT to be installed by manual handling" or similar.
10.	Appropriate PPE <u>SHALL BE</u> worn at all times whilst the equipment is being operated
11.	All associated installation and maintenance activities <u>SHALL</u> comply with Network Rail Inspection of Signal Engineering Maintenance Assets - NR/L2/SIG/10028, General Instructions to Staff Working on S&T Equipment- NR/L2/SIG/10064, 'Safety of People Working On or Near the Line' standards- NR/L2/OHS/019, and GE/RT8000 Rule Book.

Certificate of Acceptance

PA05/06503

Manufacturer:
Unipart Rail Dorman

Issue : 7
Valid From : 24-05-2023

12.	The Signal Post Trunnion Assembly does not fall under the definition of a lifting machine and therefore The Lifting Operation and Lifting Equipment Regulations 1998 (LOLER) do not apply (as defined by the following independent report: Zurich - Legislation Review against LOLER 1998 and The Supply of Machinery (Safety) Regulations 2008 of a Signal Post Trunnion Assembly Report date 23rd October 2015
-----	---

Product Configuration

System or Complete Assembly

ALT

Part No.	Description	Catalogue No.
TYPE 68 AL	Dorman Integrated Lightweight. 4 ASP CLS with Stencil housing & GRP post only. To be used for the Assisted Lift Trunnion only. User to specify post height (height from top of foundation to top of rail and top of rail to centre of red).	0094/019328
TYPE 100 AL	Dorman Integrated Lightweight. Banner/Theatre housing & GRP post only. To be used for the Assisted Lift Trunnion only. User to specify post height (height from top of foundation to top of rail and top of rail to centre of red).	0094/019329
D04.DUMAL	GRP post only, to be used only with Assisted Trunnion and CLS LITE.	0094/019330

HD ALT

Part No.	Description	Catalogue No.
B04.20288	HEAVY DUTY ASSISTED LIFT TRUNION	0094/019441

Hardware (Maintenance Spares and Line Replaceable Units)

ALT

Part No.	Description	Catalogue No.
B20.19437	CLS LITE and GRP interface bracket	0094/019331
B04.03138	ALT CLS POST - WITHOUT LINER.	0094/019332
B04.03139	ALT CLS POST - WITH 4MM LINER.	0094/019333
D04.03623	ALT 4 ASP, 2 APERTURE FRAME ASSEMBLY.	0094/019334
D04.03624	ALT 3 ASP, 1 APERTURE (LONG) FRAME ASSEMBLY.	0094/019335
D04.03625	ALT 3 ASP, 1 APERTURE (SHORT) FRAME ASSEMBLY.	0094/019336
B20.19423	Assisted Lift Trunnion	0094/019337
CALH/SRYG/AAE	3 Aspect CLS LITE Long Range Short UHQ and interface bracket. To be used only with the Assisted Lift Trunnion and associated post.	0094/019338
CANH/SRYG/AAE	3 Aspect CLS LITE Medium Range Narrow Angle Short UHQ and interface bracket. To be used only with the Assisted Lift Trunnion and associated post	0094/019339
CANF/SRYG/AAG	3 Aspect CLS LITE Medium Range Narrow Angle Short BHQ and interface bracket. To be used only with the Assisted Lift Trunnion and associated post	0094/019340

Please contact prodacc@networkrail.co.uk

Certificate of Acceptance

PA05/06503

Manufacturer:
Unipart Rail Dorman

Issue : 7
Valid From : 24-05-2023

Part No.	Description	Catalogue No.
CAWH/SRYG/AAE	3 Aspect CLS LITE Medium Range Wide Angle Short UHQ and interface bracket. To be used only with the Assisted Lift Trunnion and associated post	0094/019341
CAWF/SRYG/AAG	3 Aspect CLS LITE Medium Range Wide Angle Short BHQ and interface bracket. To be used only with the Assisted Lift Trunnion and associated post	0094/019342
CALH/3RYG/AAE	3 Aspect CLS LITE Long Range UHQ and interface bracket. To be used only with the Assisted Lift Trunnion and associated post	0094/019343
CAWH/3RYG/AAE	3 Aspect CLS LITE Medium Range Wide Angle UHQ and interface bracket. To be used only with the Assisted Lift Trunnion and associated post	0094/019344
CANH/3RYG/AAE	3 Aspect CLS LITE Medium Range Narrow Angle UHQ and interface bracket. To be used only with the Assisted Lift Trunnion and associated post	0094/019345
CALF/3RYG/AAG	3 Aspect CLS LITE Long Range Short BHQ and interface bracket. To be used only with the Assisted Lift Trunnion and associated post	0094/019346
CALT/3RYG/AAG	3 Aspect CLS LITE Tunnel Long range Short BHQ and interface bracket. To be used only with the Assisted Lift Trunnion and associated post	0094/019347
CALF/RGYG/AAG	4 Aspect CLS LITE Long Range BHQ, and interface bracket. To be used only with the Assisted Lift Trunnion and associated post	0094/019348
CALT/RGYG/AAG	4 Aspect CLS LITE Tunnel Long Range BHQ and interface bracket. To be used only with the Assisted Lift Trunnion and associated post	0094/019349
CALF/RGYG/AAE	4 Aspect CLS LITE Long Range UHQ and interface bracket. To be used only with the Assisted Lift Trunnion and associated post	0094/019350
CAWF/RGYG/AAG	4 Aspect CLS LITE Medium Range Wide Angle BHQ and interface bracket. To be used only with the Assisted Lift Trunnion and associated post	0094/019351
CANF/RGYG/AAG	4 Aspect CLS LITE Medium Range Narrow Angle BHQ and interface bracket. To be used only with the Assisted Lift Trunnion and associated post	0094/019352
CAWH/RGYG/AAE	4 Aspect CLS LITE Medium Range Wide Angle UHQ and interface bracket. To be used only with the Assisted Lift Trunnion and associated post	0094/019353
CANH/RGYG/AAE	4 Aspect CLS LITE Medium Range Narrow Angle UHQ and interface bracket. To be used only with the Assisted Lift Trunnion and associated post	0094/019354
CALH/SRYG/ACE	3 Aspect CLS LITE Long Range Short UHQ (Double Cut VF) and interface bracket. To be used only with the Assisted Lift Trunnion and associated post	0094/019355
CANH/SRYG/ACE	3 Aspect CLS LITE Medium Range Narrow Angle Short UHQ (Double Cut VF) and interface bracket. To be used only with the Assisted Lift Trunnion and associated post	0094/019356
CANF/SRYG/ACG	3 Aspect CLS LITE Medium Range Narrow Angle Short BHQ (Double Cut VF) and interface bracket. To be used only with the Assisted Lift Trunnion and associated post	0094/019357

Please contact prodacc@networkrail.co.uk

Certificate of Acceptance

PA05/06503

Manufacturer:
Unipart Rail Dorman

Issue : 7
Valid From : 24-05-2023

Part No.	Description	Catalogue No.
CAWH/SRYG/ACE	3 Aspect CLS LITE Medium Range Wide Angle Short UHQ (Double Cut VF) and interface bracket. To be used only with the Assisted Lift Trunnion and associated post	0094/019358
CAWF/SRYG/ACG	3 Aspect CLS LITE Medium Range Wide Angle Short BHQ (Double Cut VF) and interface bracket. To be used only with the Assisted Lift Trunnion and associated post	0094/019359
CALH/3RYG/ACE	3 Aspect CLS LITE Long Range UHQ (Double Cut VF) and interface bracket. To be used only with the Assisted Lift Trunnion and associated post	0094/019360
CAWH/3RYG/ACE	3 Aspect CLS LITE Medium Range Wide Angle UHQ (Double Cut VF) and interface bracket. To be used only with the Assisted Lift Trunnion and associated post	0094/019361
CANH/3RYG/ACE	3 Aspect CLS LITE Medium Range Narrow Angle UHQ (Double Cut VF) and interface bracket. To be used only with the Assisted Lift Trunnion and associated post	0094/019362
CALF/3RYG/ACG	3 Aspect CLS LITE Long Range Short BHQ (Double Cut VF) and interface bracket. To be used only with the Assisted Lift Trunnion and associated post	0094/019363
CALT/3RYG/ACG	3 Aspect CLS LIT Long range Short BHQ (Double Cut VF) and interface bracket. To be used only with the Assisted Lift Trunnion and associated post	0094/019364
CALF/RGYG/ACG	4 Aspect CLS LITE Long Range BHQ, (Double Cut VF) and interface bracket. To be used only with the Assisted Lift Trunnion and associated post	0094/019365
CALT/RGYG/ACG	4 Aspect CLS LITE Tunnel Long Range BHQ (Double Cut VF) and interface bracket. To be used only with the Assisted Lift Trunnion and associated post	0094/019366
CALF/RGYG/ACE	4 Aspect CLS LITE Long Range UHQ (Double Cut VF) and interface bracket. To be used only with the Assisted Lift Trunnion and associated post	0094/019367
CAWF/RGYG/ACG	4 Aspect CLS LITE Medium Range Wide Angle BHQ (Double Cut VF) and interface bracket. To be used only with the Assisted Lift Trunnion and associated post	0094/019368
CANF/RGYG/ACG	4 Aspect CLS LITE Medium Range Narrow Angle BHQ (Double Cut VF) and interface bracket. To be used only with the Assisted Lift Trunnion and associated post	0094/019369
CAWH/RGYG/ACE	4 Aspect CLS LITE Medium Range Wide Angle UHQ (Double Cut VF) and interface bracket. To be used only with the Assisted Lift Trunnion and associated post	0094/019370
CANH/RGYG/ACE	4 Aspect CLS LITE Medium Range Narrow Angle UHQ (Double Cut VF) and interface bracket. To be used only with the Assisted Lift Trunnion and associated post	0094/019371
TYPE 01 AL	Dorman Integrated Lightweight. 3 asp CLS housing & GRP post only. To be used for the Assisted Lift Trunnion only. User to specify post height (height from top of foundation to top of rail and top of rail to centre of red).	0094/019372
TYPE 02 AL	Dorman Integrated Lightweight. 3 asp CLS and position 1 junction indicator housing & GRP post only. To be used for the Assisted Lift Trunnion only. User to specify post height (height from top of foundation to top of rail and top of rail to centre of red).	0094/019373

Please contact prodacc@networkrail.co.uk

Certificate of Acceptance

PA05/06503

Manufacturer:
Unipart Rail Dorman

Issue : 7
Valid From : 24-05-2023

Part No.	Description	Catalogue No.
TYPE 03 AL	Dorman Integrated Lightweight. 3 asp CLS and position 4 junction indicator housing & GRP post only. To be used for the Assisted Lift Trunnion only. User to specify post height (height from top of foundation to top of rail and top of rail to centre of red).	0094/019374
TYPE 10 AL	Dorman Integrated Lightweight. 3 asp CLS with PLS housing & GRP post only. To be used for the Assisted Lift Trunnion only. User to specify post height (height from top of foundation to top of rail and top of rail to centre of red).	0094/019375
TYPE 11 AL	Dorman Integrated Lightweight. 3 asp CLS with PLS and position 1 junction indicator housing & GRP post only. To be used for the Assisted Lift Trunnion only. User to specify post height (height from top of foundation to top of rail and top of rail to centre of red).	0094/019376
TYPE 12 AL	Dorman Integrated Lightweight. 3 asp CLS with PLS and position 4 junction indicator housing & GRP post only. To be used for the Assisted Lift Trunnion only. User to specify post height (height from top of foundation to top of rail and top of rail to centre of red).	0094/019377
TYPE 19 AL	Dorman Integrated Lightweight. 3 asp CLS with Stencil housing & GRP post only. To be used for the Assisted Lift Trunnion only. User to specify post height (height from top of foundation to top of rail and top of rail to centre of red).	0094/019378
TYPE 20 AL	Dorman Integrated Lightweight. 3 asp CLS with Stencil and position 1 junction indicator housing & GRP post only. To be used for the Assisted Lift Trunnion only. User to specify post height (height from top of foundation to top of rail and top of rail to centre of red).	0094/019379
TYPE 21 AL	Dorman Integrated Lightweight. 3 asp CLS with Stencil and position 4 junction indicator housing & GRP post only. To be used for the Assisted Lift Trunnion only. User to specify post height (height from top of foundation to top of rail and top of rail to centre of red).	0094/019380
TYPE 28 AL	Dorman Integrated Lightweight. 3 asp CLS with PLS & Stencil housing & GRP post only. To be used for the Assisted Lift Trunnion only. User to specify post height (height from top of foundation to top of rail and top of rail to centre of red).	0094/019381
TYPE 50 AL	Dorman Integrated Lightweight. 4 asp CLS housing & GRP post only. To be used for the Assisted Lift Trunnion only. User to specify post height (height from top of foundation to top of rail and top of rail to centre of red).	0094/019382
TYPE 51 AL	Dorman Integrated Lightweight. 4 asp CLS and position 1 junction indicator housing & GRP post only. To be used for the Assisted Lift Trunnion only. User to specify post height (height from top of foundation to top of rail and top of rail to centre of red).	0094/019383
TYPE 52 AL	Dorman Integrated Lightweight. 4 asp CLS and position 4 junction indicator housing & GRP post only. To be used for the Assisted Lift Trunnion only. User to specify post height (height from top of foundation to top of rail and top of rail to centre of red).	0094/019384

Please contact prodacc@networkrail.co.uk

Certificate of Acceptance

PA05/06503

Manufacturer:
Unipart Rail Dorman

Issue : 7
Valid From : 24-05-2023

Part No.	Description	Catalogue No.
TYPE 59 AL	Dorman Integrated Lightweight. 4 asp CLS with PLS housing & GRP post only. To be used for the Assisted Lift Trunnion only. User to specify post height (height from top of foundation to top of rail and top of rail to centre of red).	0094/019385
B20.19443	Wig Wag GRP interface bracket	0094/019386
D04.03676	ALT Wig Wag POST - WITH 4MM LINER -	0094/019387
B20.20281	ALT Post bracket for Classic GPL with Route Indicator above	0094/019388
B20.19264	ALT Post bracket for GPL, MARI, SARI, PRI or Banner Repeater Signal	0094/019525
D04.03759	Assisted Lift Trunnion CCTV Mounting Bracket.	0094/019266
D04.03109	Trunnion Mounting Assembly Hardware Washer Kit (8x Cup and 8x Cone Washers)	0094/019526
D04.04059	ALT Main Tube Bolt Kit (8x Bolts, 8x Spring Washers, 8x Flat Washers)	0094/019527
B20.19539	Miniature Tunnel Signal Mounting Bracket for GRP post and ALT	0094/019528

HD ALT

Part No.	Description	Catalogue No.
D04.04060	HD ALT Main Tube Bolt Kit (8x Bolts, 8x Spring Washers, 8x Flat Washers)	0094/019331
D04.03623	ALT 4_asp, 2-aperture frame assembly.	0094/019334
B04.03253	GRP POST WITHOUT ALUMINIUM LINER (HD ALT)	0094/019435
B04.03254	GRP POST WITH 4MM ALUMINIUM LINER (HD ALT)	0094/019436
B04.03252	GRP POST WITH 9.5MM ALUMINIUM LINER (HD ALT)	0094/019437
D04.03624	ALT 3_asp, 1 aperture (long) fame assembly.	0094/019335
D04.03625	ALT 3_asp, 1 aperture (short) fame assembly.	0094/019336
D04.03983	CLS post assembly - without liner (HD assisted lift)	0094/019438
D04.03984	CLS post assembly - with 4mm liner (HD assisted lift)	0094/019439
D04.03985	CLS post assembly - with 9.5mm liner (HD assisted lift)	0094/019440
D04.04006	4 Aspect Classic CLS frame for use on GRP post and HD ALT (Customer to define module type)	0094/019529
D04.04007	3 Aspect Tall Classic CLS frame for use on GRP post and HD ALT (Customer to define module type)	0094/019530
D04.04008	3 Aspect Short Classic CLS frame for use on GRP post and HD ALT (Customer to define module type)	0094/019531
TRUN/HDAL04	3 aspect CLS with position 1 and 4 junction indicator housing and GRP post only	0094/019442
TRUN/HDAL05	3 aspect CLS with position 1 and 2 junction indicator housing and GRP post only	0094/019443
TRUN/HDAL06	3 aspect CLS with position 4 and 5 junction indicator housing and GRP post only	0094/019444
TRUN/HDAL13	3 aspect CLS with PLS and position 1 and 4 junction indicator housing and GRP post only	0094/019445
TRUN/HDAL14	3 aspect CLS with PLS and position 1 and 2 junction indicator housing and GRP post only	0094/019446
TRUN/HDAL15	3 aspect CLS with PLS and position 4 and 5 junction indicator housing and GRP post only	0094/019447
TRUN/HDAL22	3 aspect CLS with MARI and position 1 and 4 junction indicator housing and GRP post only	0094/019448

Please contact prodacc@networkrail.co.uk

Certificate of Acceptance

PA05/06503

Manufacturer:
Unipart Rail Dorman

Issue : 7
Valid From : 24-05-2023

Part No.	Description	Catalogue No.
TRUN/HDAL23	3 aspect CLS with MARI and position 1 and 2 junction indicator housing and GRP post only	0094/019449
TRUN/HDAL24	3 aspect CLS with MARI and position 4 and 5 junction indicator housing and GRP post only	0094/019450
TRUN/HDAL29	3 aspect CLS with PLS, MARI and position 1 junction indicator housing and GRP post only	0094/019451
TRUN/HDAL30	3 aspect CLS with PLS, MARI and position 4 junction indicator housing and GRP post only	0094/019452
TRUN/HDAL31	3 aspect CLS with PLS, MARI and position 1 and 4 junction indicator housing and GRP post only	0094/019453
TRUN/HDAL32	3 aspect CLS with PLS, MARI and position 1 and 2 junction indicator housing and GRP post only	0094/019454
TRUN/HDAL33	3 aspect CLS with PLS, MARI and position 4 and 4 junction indicator housing and GRP post only	0094/019455
TRUN/HDAL37	3 aspect CLS with SARI housing and GRP post only	0094/019456
TRUN/HDAL38	3 aspect CLS with PLS and SARI housing and GRP post only	0094/019457
TRUN/HDAL39	3 aspect CLS with SARI and MARI housing and GRP post only	0094/019458
TRUN/HDAL40	3 aspect CLS with PLS, SARI and MARI housing and GRP post only	0094/019459
TRUN/HDAL41	3 aspect CLS with twin MARI housing and GRP post only	0094/019460
TRUN/HDAL42	3 aspect CLS with PLS and twin MARI housing and GRP post only	0094/019461
TRUN/HDAL43	3 aspect CLS with SARI and twin MARI housing and GRP post only	0094/019462
TRUN/HDAL44	3 aspect CLS with PLS, SARI and twin MARI housing and GRP post only	0094/019463
TRUN/HDAL53	4 aspect CLS with position 1 and 4 junction indicator housing and GRP post only	0094/019464
TRUN/HDAL54	4 aspect CLS with position 1 and 2 junction indicator housing and GRP post only	0094/019465
TRUN/HDAL55	4 aspect CLS with position 4 and 5 junction indicator housing and GRP post only	0094/019466
TRUN/HDAL60	4 aspect CLS with PLS and position 1 junction indicator housing and GRP post only	0094/019467
TRUN/HDAL61	4 aspect CLS with PLS and position 4 junction indicator housing and GRP post only	0094/019468
TRUN/HDAL62	4 aspect CLS with PLS and position 1 and 4 junction indicator housing and GRP post only	0094/019469
TRUN/HDAL63	4 aspect CLS with PLS and position 1 and 2 junction indicator housing and GRP post only	0094/019470
TRUN/HDAL64	4 aspect CLS with PLS and position 4 and 5 junction indicator housing and GRP post only	0094/019471
TRUN/HDAL69	4 aspect CLS with MARI and position 1 junction indicator housing and GRP post only	0094/019472
TRUN/HDAL70	4 aspect CLS with MARI and position 4 junction indicator housing and GRP post only	0094/019473
TRUN/HDAL71	4 aspect CLS with MARI and position 1 and 4 junction indicator housing and GRP post only	0094/019474
TRUN/HDAL72	4 aspect CLS with MARI and position 1 and 2 junction indicator housing and GRP post only	0094/019475

Please contact prodacc@networkrail.co.uk

Certificate of Acceptance

PA05/06503

Manufacturer:
Unipart Rail Dorman

Issue : 7
Valid From : 24-05-2023

Part No.	Description	Catalogue No.
TRUN/HDAL73	4 aspect CLS with MARI and position 4 and 5 junction indicator housing and GRP post only	0094/019476
TRUN/HDAL77	4 aspect CLS with PLS and MARI housing and GRP post only	0094/019477
TRUN/HDAL78	4 aspect CLS with PLS, MARI and position 1 junction indicator housing and GRP post only	0094/019478
TRUN/HDAL79	4 aspect CLS with PLS, MARI and position 4 junction indicator housing and GRP post only	0094/019479
TRUN/HDAL80	4 aspect CLS with PLS, MARI and position 1 and 4 junction indicator housing and GRP post only	0094/019480
TRUN/HDAL81	4 aspect CLS with PLS, MARI and position 1 and 2 junction indicator housing and GRP post only	0094/019481
TRUN/HDAL82	4 aspect CLS with PLS, MARI and position 4 and 5 junction indicator housing and GRP post only	0094/019482
TRUN/HDAL86	4 aspect CLS with SARI housing and GRP post only	0094/019483
TRUN/HDAL87	4 aspect CLS with PLS and SARI housing and GRP post only	0094/019484
TRUN/HDAL88	4 aspect CLS with SARI and MARI housing and GRP post only	0094/019485
TRUN/HDAL89	4 aspect CLS with PLS, SARI and MARI housing and GRP post only	0094/019486
TRUN/HDAL90	4 aspect CLS with twin MARI housing and GRP post only	0094/019487
TRUN/HDAL91	4 aspect CLS with PLS and twin MARI housing and GRP post only	0094/019488
TRUN/HDAL92	4 aspect CLS with SARI and twin MARI housing and GRP post only	0094/019489
TRUN/HDAL93	4 aspect CLS with PLS, SARI and twin MARI housing and GRP post only	0094/019490
CHLH/SRYG/AEE	3 Aspect CLS LITE Long Range Short UHQ and interface bracket. To be used only with the Heavy Duty Assisted Lift Trunnion and associated post	0094/019491
CHNH/SRYG/AEE	3 Aspect CLS LITE Medium Range Narrow Angle Short UHQ and interface bracket. To be used only with the Heavy Duty Assisted Lift Trunnion and associated post	0094/019492
CHNF/SRYG/AAG	3 Aspect CLS LITE Medium Range Narrow Angle Short BHQ and interface bracket. To be used only with the Heavy Duty Assisted Lift Trunnion and associated post	0094/019493
CHWH/SRYG/AEE	3 Aspect CLS LITE Medium Range Wide Angle Short UHQ and interface bracket. To be used only with the Heavy Duty Assisted Lift Trunnion and associated post	0094/019494
CHWF/SRYG/AAG	3 Aspect CLS LITE Medium Range Wide Angle Short BHQ and interface bracket. To be used only with the Heavy Duty Assisted Lift Trunnion and associated post	0094/019495
CHLH/3RYG/AEE	3 Aspect CLS LITE Long Range UHQ and interface bracket. To be used only with the Heavy Duty Assisted Lift Trunnion and associated post	0094/019496
CHWH/3RYG/AEE	3 Aspect CLS LITE Medium Range Wide Angle UHQ and interface bracket. To be used only with the Heavy Duty Assisted Lift Trunnion and associated post	0094/019497

Please contact prodacc@networkrail.co.uk

Certificate of Acceptance

PA05/06503

Manufacturer:
Unipart Rail Dorman

Issue : 7
Valid From : 24-05-2023

Part No.	Description	Catalogue No.
CHNH/3RYG/AEE	3 Aspect CLS LITE Medium Range Narrow Angle UHQ and interface bracket. To be used only with the Heavy Duty Assisted Lift Trunnion and associated post	0094/019498
CHLF/3RYG/AAG	3 Aspect CLS LITE Long Range Short BHQ and interface bracket. To be used only with the Heavy Duty Assisted Lift Trunnion and associated post	0094/019499
CHLT/3RYG/AAG	3 Aspect CLS LITE Tunnel Long range Short BHQ and interface bracket. To be used only with the Heavy Duty Assisted Lift Trunnion and associated post	0094/019500
CHLF/RYG/AAG	4 Aspect CLS LITE Long Range BHQ, and interface bracket. To be used only with the Heavy Duty Assisted Lift Trunnion and associated post	0094/019501
CHLT/RYG/AAG	4 Aspect CLS LITE Tunnel Long Range BHQ and interface bracket. To be used only with the Heavy Duty Assisted Lift Trunnion and associated post	0094/019502
CHLF/RYG/AEE	4 Aspect CLS LITE Long Range UHQ and interface bracket. To be used only with the Heavy Duty Assisted Lift Trunnion and associated post	0094/019503
CHWF/RYG/AAG	4 Aspect CLS LITE Medium Range Wide Angle BHQ and interface bracket. To be used only with the Heavy Duty Assisted Lift Trunnion and associated post	0094/019504
CHNF/RYG/AAG	4 Aspect CLS LITE Medium Range Narrow Angle BHQ and interface bracket. To be used only with the Heavy Duty Assisted Lift Trunnion and associated post	0094/019505
CHWH/RYG/AEE	4 Aspect CLS LITE Medium Range Wide Angle UHQ and interface bracket. To be used only with the Heavy Duty Assisted Lift Trunnion and associated post	0094/019506
CHNH/RYG/AEE	4 Aspect CLS LITE Medium Range Narrow Angle UHQ and interface bracket. To be used only with the Heavy Duty Assisted Lift Trunnion and associated post	0094/019507
CHLH/SRYG/ACE	3 Aspect CLS LITE Long Range Short UHQ (Double Cut VF) and interface bracket. To be used only with the Heavy Duty Assisted Lift Trunnion and associated post	0094/019508
CHNH/SRYG/ACE	3 Aspect CLS LITE Medium Range Narrow Angle Short UHQ (Double Cut VF) and interface bracket. To be used only with the Heavy Duty Assisted Lift Trunnion and associated post	0094/019509
CHNF/SRYG/ACG	3 Aspect CLS LITE Medium Range Narrow Angle Short BHQ (Double Cut VF) and interface bracket. To be used only with the Heavy Duty Assisted Lift Trunnion and associated post	0094/019510
CHWH/SRYG/ACE	3 Aspect CLS LITE Medium Range Wide Angle Short UHQ (Double Cut VF) and interface bracket. To be used only with the Heavy Duty Assisted Lift Trunnion and associated post	0094/019511

Please contact prodacc@networkrail.co.uk

Certificate of Acceptance

PA05/06503

Manufacturer:
Unipart Rail Dorman

Issue : 7
Valid From : 24-05-2023

Part No.	Description	Catalogue No.
CHWF/SRYG/ACG	3 Aspect CLS LITE Medium Range Wide Angle Short BHQ (Double Cut VF) and interface bracket. To be used only with the Heavy Duty Assisted Lift Trunnion and associated post	0094/019512
CHLH/3RYG/ACE	3 Aspect CLS LITE Long Range UHQ (Double Cut VF) and interface bracket. To be used only with the Heavy Duty Assisted Lift Trunnion and associated post	0094/019513
CHWH/3RYG/ACE	3 Aspect CLS LITE Medium Range Wide Angle UHQ (Double Cut VF) and interface bracket. To be used only with the Heavy Duty Assisted Lift Trunnion and associated post	0094/019514
CHNH/3RYG/ACE	3 Aspect CLS LITE Medium Range Narrow Angle UHQ (Double Cut VF) and interface bracket. To be used only with the Heavy Duty Assisted Lift Trunnion and associated post	0094/019515
CHNH/3RYG/ACE	3 Aspect CLS LITE Medium Range Narrow Angle UHQ (Double Cut VF) and interface bracket. To be used only with the Heavy Duty Assisted Lift Trunnion and associated post	0094/019516
CHLF/3RYG/ACG	3 Aspect CLS LITE Long Range Short BHQ (Double Cut VF) and interface bracket. To be used only with the Heavy Duty Assisted Lift Trunnion and associated post	0094/019517
CHLT/3RYG/ACG	3 Aspect CLS LIT Long range Short BHQ (Double Cut VF) and interface bracket. To be used only with the Heavy Duty Assisted Lift Trunnion and associated post	0094/019505
CHLF/RGYG/ACG	4 Aspect CLS LITE Long Range BHQ, (Double Cut VF) and interface bracket. To be used only with the Heavy Duty Assisted Lift Trunnion and associated post	0094/019518
CHLT/RGYG/ACG	4 Aspect CLS LITE Tunnel Long Range BHQ (Double Cut VF) and interface bracket. To be used only with the Heavy Duty Assisted Lift Trunnion and associated post	0094/019519
CHLF/RGYG/ACE	4 Aspect CLS LITE Long Range UHQ (Double Cut VF) and interface bracket. To be used only with the Heavy Duty Assisted Lift Trunnion and associated post	0094/019520
CHWF/RGYG/ACG	4 Aspect CLS LITE Medium Range Wide Angle BHQ (Double Cut VF) and interface bracket. To be used only with the Heavy Duty Assisted Lift Trunnion and associated post	0094/019521
CHNF/RGYG/ACG	4 Aspect CLS LITE Medium Range Narrow Angle BHQ (Double Cut VF) and interface bracket. To be used only with the Heavy Duty Assisted Lift Trunnion and associated post	0094/019522
CHWH/RGYG/ACE	4 Aspect CLS LITE Medium Range Wide Angle UHQ (Double Cut VF) and interface bracket. To be used only with the Heavy Duty Assisted Lift Trunnion and associated post	0094/019523
CHNH/RGYG/ACE	4 Aspect CLS LITE Medium Range Narrow Angle UHQ (Double Cut VF) and interface bracket. To be used only with the Heavy Duty Assisted Lift Trunnion and associated post	0094/019524

Please contact prodacc@networkrail.co.uk

Certificate of Acceptance

PA05/06503

Manufacturer:
Unipart Rail Dorman

Issue : 7
Valid From : 24-05-2023

Offset Post

Part No.	Description	Catalogue No.
C64.65630	L shaped Offset Signal Post, manufactured to customer supplied dimensions with maximum offset from the post centreline to the centre of the most restrictive aspect, not greater than 888mm	0094/019532
COLH/3RYG/AEE	3 Aspect, Tall Frame, Current Proved, Long Range Narrow Beam, Elevated CLS LITE for use with Offset Post only	0094/019533
COLH/3RYG/ACE	3 Aspect, Tall Frame, Double Cut VFC Proved, Long Range Narrow Beam, Elevated CLS LITE for use with Offset Post only	0094/019534
COLH/RYG/AAE	4 Aspect, Current Proved, Long Range Narrow Beam, Elevated CLS LITE for use with Offset Post only	0094/019535
COLH/RYG/ACE	4 Aspect, Double Cut VFC Proved, Long Range Narrow Beam, Elevated CLS LITE for use with Offset Post only	0094/019536
COLH/SRYG/AEE	3 Aspect, Short Frame, Current Proved, Long Range Narrow Beam, Elevated CLS LITE for use with Offset Post only	0094/019537
COLH/SRYG/ACE	3 Aspect, Short Frame, Double Cut VFC Proved Long Range Narrow Beam, Elevated CLS LITE for use with Offset Post only	0094/019538
CONH/3RYG/AEE	3 Aspect, Tall Frame, Current Proved, Medium Range Narrow Beam, Elevated CLS LITE for use with Offset Post only	0094/019539
CONH/3RYG/ACE	3 Aspect, Tall Frame, Double Cut VFC Proved, Medium Range Narrow Beam, Elevated CLS LITE for use with Offset Post only	0094/019540
CONH/RYG/AAE	4 Aspect, Current Proved, Medium Range Narrow Beam, Elevated CLS LITE for use with Offset Post only	0094/019541
CONH/RYG/ACE	4 Aspect, Double Cut VFC Proved, Medium Range Narrow, Elevated CLS LITE for use with Offset Post only	0094/019542
CONH/SRYG/AEE	3 Aspect, Short Frame, Current Proved, Medium Range Narrow Beam, Elevated CLS LITE for use with Offset Post only	0094/019543
CONH/SRYG/ACE	3 Aspect, Short Frame, Double Cut VFC Proved Medium Range Narrow Beam, Elevated CLS LITE for use with Offset Post only	0094/019544
COWH/3RYG/AEE	3 Aspect, Tall Frame, Current Proved, Medium Range Wide Beam, Elevated CLS LITE for use with Offset Post only	0094/019545
COWH/3RYG/ACE	3 Aspect, Tall Frame, Double Cut VFC Proved, , Medium Range Wide Beam, Elevated CLS LITE for use with Offset Post only	0094/019546
COWH/RYG/AAE	4 Aspect, Current Proved, , Medium Range Wide Beam,, Elevated CLS LITE for use with Offset Post only	0094/019547
COWH/RYG/ACE	4 Aspect, Double Cut VFC Proved, , Medium Range Wide Beam, Elevated CLS LITE for use with Offset Post only	0094/019548
COWH/SRYG/AEE	3 Aspect, Short Frame, Current Proved, , Medium Range Wide Beam, Elevated CLS LITE for use with Offset Post only	0094/019549
COWH/SRYG/ACE	3 Aspect, Short Frame, Double Cut VFC Proved , Medium Range Wide Beam, Elevated CLS LITE for use with Offset Post only	0094/019550

Please contact prodacc@networkrail.co.uk

Certificate of Acceptance

PA05/06503

Manufacturer:
Unipart Rail Dorman

Issue : 7
Valid From : 24-05-2023

Assessed Documentation

Reference	Title	Doc. Rev.	Date and Applies to Cert. issue No.	
Unipart Rail Document	Quality management system ISO 9001:2008 – FM14371.	2	10/11/2022	1
Zurich Report Reference – LC15-0147.	Legislation review against LOLER 1998 and the supply of machinery (Safety) regulations of a signal post trunnion assembly.	1	23/10/2015	1
Unipart Rail Document	Declaration of Conformity.	1	02/11/2015	1
Unipart Rail Document	Technical conformity requirements for FRP posts.	1	26/06/2014	1
Unipart Rail Document	Design and material selection information.	1	29/09/2015	1
Unipart Rail Document	Engineering drawings and dimensional layout for the following part list. <ol style="list-style-type: none"> 1. Base post plate. 2. Trunnion post tube. 3. Post retention spring. 4. Sighting scope post bracket 5. Post plug hanger rib 6. Post locking plate 7. Post locking plate 8. Post clamp plate 9. Post locating bush 10. Post locating pin 11. Lifting eye nut 	1	18/09/2015	1
Unipart Rail Document	Spring specification –The institute of spring Technology .	1	08/04/2015	1
Unipart Rail Document	Hand dynamic load calculations, safety factors and mechanical design calculations.	1	06/11/2015	1
Unipart Rail Document	Product design checks and confirmation statement of intent signatures.	1	06/11/2015	1
Unipart Rail Document	FEA stress analysis report – Autodesk software simulation.	1	21/09/2015	1
Unipart Rail Dorman Doc	Method of statement for the installation of the Unipart Dorman spring assisted Trunion – raising and lowering the device with various head configuration.	1	29/09/2015	1
Unipart Rail Document	Detailed statement of any limitation and scope of constraints of the Trunnion system.	1	06/11/2015	1
Unipart Rail Document	Detailed requirement for weather resilience.	1	06/11/2015	1
Unipart Rail Document	Detail of product surface finish.	1	06/11/2015	1
Unipart Rail Document	Intellectual Property Rights statement.	1	29/09/2015	1
Unipart Rail Document	UD ISO9001 2015 Cert	1	26/03/2019	4
Network Rail- PAN/E/CE/SS/0017	Project Advice note –NR/PRC/SPC/PAN/007.	2	28/07/2008	1
Unipart Rail Document	Designer risk assessment.	1	06/11/2015	1
ALTCCTV	Drawing with Wind Loading	1	27/10/2017	3
Unipart Dorman-P146-2656-01032 Issue 1	Design FMEA	1	23/10/2019	4

Please contact prodacc@networkrail.co.uk

Certificate of Acceptance

PA05/06503

Manufacturer:
Unipart Rail Dorman

Issue : 7
Valid From : 24-05-2023

Reference	Title	Doc. Rev.	Date and Applies to Cert. issue No.	
Unipart Dorman-P146-2656-01074 Issue 1 -	Installation Process FMEA	1	23/10/2019	4
Unipart Dorman-P146-2656-01108	Heavy Duty ALT Design Calculations	1	21/11/2019	4
Unipart Dorman	Heavy Duty ALT FEA Report	1	20/11/2019	4
Unipart Dorman P146-2656-01119_Heavy Duty ALT Technical Statement -	Intellectual Property Rights	1	05/11/2019	4
Unipart Dorman B20.20288_HD ALT Fabrication Assembly	Engineering drawings and dimensional layout of the whole HD ALT.	1	05/11/2019	4
Unipart Dorman Drawing B20.19577	Engineering drawing showing a generic product fabrication layout	2	18/05/23	7
Unipart Dorman Document	Offset post Supporting Documentation Pack	1	03/05/23	7

Manuals and Training Materials

Reference	Title	Doc. Rev.	Date and Applies to Cert. issue No.	
Unipart Rail Dorman Doc C64.65372.	Operation and maintenance.	1	29/09/2015	1
Unipart Rail Document C64.65546 Heavy Duty ALT O&M Manual	Product familiarisation briefing. Operation and maintenance	1 3	29/09/2015 27/01/2020	1 4
Offset post Data	Offset Post lifting forces	1	17/10/2022	1
Offset Appendix for the HD ALT O&M	Appendix for Offset post	1	01/08/2022	1
Heavy Duty ALT - Training Guide	Training Guidance	2	21/11/2019	4
HD ALT Engineering Overview Nov 2019	Training Presentation	1	28/11/2019	4

Certificate History

Issue	Date	Issue History
1	03/03/2016	First accepted for use.
2	27/06/2016	Parts List updated.
3	29/11/2017	CCTV option added.
4	03/02/2020	Additional Product HD ALT.
5	12/03/2021	Offset Post Trial Certificate.
6	12/11/2022	"L" Shape Offset Post fully approved.

Certificate of Acceptance

PA05/06503

Manufacturer:
Unipart Rail Dorman

Issue : 7
Valid From : 24-05-2023

7	24/05/2023	Addition of various spare parts and new bracket for Classic GPL, Route Indicators and Banner/PRI. Addition of CLS LITE Heads and Classic Banner/PRI for use on the Offset Post.
---	------------	---

Contact Details

Manufacturer

Unipart Dorman
Graham Scott
Technical Sales Manager

graham.scott@unipartdorman.co.uk

Sponsor

Andrew Dickinson
Senior Project Engineer
Network Rail

andrew.dickinson@networkrail.co.uk

Lead Reviewer

Juan Caceres-Gonzalez
Engineer
Technical Authority Plant
Network Rail

Juan.Caceresgonzalez@networkrail.co.uk

Issue 7 Update

Gurdeep Virdee
Principal Engineer
Technical Authority CCS

Gurdeep.Virdee@networkrail.co.uk

Manufacturer:
Unipart Rail Dorman

Issue : 7
Valid From : 24-05-2023

General Terms & Conditions

1) General

- 1) This certificate can only be amended by Network Rail Product Acceptance, the relevant Network Technical Head or nominated delegate. Any alterations made by a other persons will invalidate the entire certificate.
- 2) Failure to abide by the requirements in this Certificate of Acceptance may invalidate the certificate, thereby restricting the right to operate the product and / or limiting the future supply and deployment of the product on the infrastructure.
- 3) Upon the review date this certificate and the product it relates to is invalid and not accepted for use. Manufacturers are to make an application for a review prior to the review date via the NR sponsoring applicant.

2) Manufacturer

The Manufacturer shall:

- 1) Ensure that all products supplied comply with the standards defined in the Acceptance Requirements or otherwise documented as part of the assessment, including meeting the reliability requirements included in the Network Rail Design for Reliability Standard (DFR) NR-L2-RSE-0005 and in any deed of warranty for the relevant certificate number.
- 2) Notify Network Rail Product Acceptance in writing (email prodacc@networkrail.co.uk):
 - a. Within 48 hours, of any deficiencies affecting the quality, functionality or safety integrity of the product (including corrective action undertaken or proposed).
 - b. Of any intended change to the accepted product; changes include:
 - i. a change to the product configuration (to the actual product or its application);
 - ii. a variation to or addition of manufacturing locations or processes;
 - iii. a change in the name or ownership of the manufacturing company;
 - iv. any changes to the ability or intention to support with technical services, spares or repairs.
- 3) The Manufacturer shall provide Network Rail Product Acceptance or National Supply Chain (NSC) at least 12 (twelve) months notice of its intention to discontinue supply or to provide such notice as is reasonable if such discontinuance is outside its control and will offer the opportunity of a Last Time Buy to Network Rail together with date for last order placement and supply of the parts affected. The introduction of proposed alternative products shall be communicated to Network Rail Product Acceptance.
- 4) Provide further copies of operating and maintenance manuals to purchasers / users of the product as necessary (including certificates of conformance, calibration etc).
- 5) Provide further copies of training manuals and an appropriate level of training to purchasers or users of the product as necessary.
- 6) Where applicable, specialist technical support, repairs and servicing of the product shall be carried out by the Original Equipment Manufacturer (OEM) or authorised agent only.
- 7) Network Rail may request information from the manufacturer to prove product compliance with clauses 1 and 2 above and reserve the right to suspend and/or withdraw any application where information is not forthcoming within a reasonable timeframe.
- 8) In accordance with Network Rail's Quality Assurance Policy Statement, where the specification and/or Product Acceptance Certificates specify quality assurance classifications for the products, the manufacturer shall comply with the specified level of quality assurance for each product and allow Network Rail access to carry out its quality assurance checks.
- 9) The manufacturer shall give Network Rail's representatives access at all reasonable times to its premises and allow them to inspect its quality systems and production methods and, if requested, to inspect, examine and test the products both during and after their manufacture and the materials being used in their manufacture.

3) Conditions of Use

Specifiers, installers, operators, maintainers, etc. using the product shall:

- 1) Comply with the certificate conditions. If a condition is not understood guidance must be sought from Network Rail Product Acceptance.
- 2) Check that the application of use complies with the relevant certificate's scope of acceptance.
- 3) Report any defect if it is a design or manufacturing fault likely to affect performance and/or the safe operation of the railway in writing to Network Rail Product Acceptance.
- 4) Inform Network Rail Product Acceptance in writing of a change to the product configuration (or to the actual product or its application).
- 5) Operate, maintain and service the product in accordance with Network Rail standards and Operation and Maintenance manuals as appropriate.
- 6) Be appropriately trained and authorised for the installation, maintenance and use of the product.
- 7) Only send products for repair or reconditioning to the Original Equipment Manufacturer (OEM) or authorised agent.
- 8) Users are to be aware that Product Acceptance is not a substitute for design approval.

Manufacturer:
Unipart Rail Dorman

Issue : 7
Valid From : 24-05-2023

4) Compliance

Railways and Other Guided Systems (ROGS) Regulations

1) Where the product is to be used in areas where Network Rail is not the Infrastructure Manager (e.g. leased stations), the sponsoring applicant shall additionally obtain formal consent from the Infrastructure Manager for the locality where the equipment is to be installed. This may include a requirement for additional safety verification. The decision of that Infrastructure Manager is binding, and cannot be overridden by Network Rail except by the escalation processes established in the ROGS regulations

2) As required in Railway Group Standard RIS-8270-RST, at each use of this product the project or group responsible for installation and commissioning shall be required to demonstrate compatibility with:

- a. All rail vehicle types that have access rights over the area affected by the change
- b. Infrastructure managed by others
- c. Neighbours.

Railway Interoperability Regulations

3) For interoperable constituents of systems the project or group responsible for installation and commissioning shall be required to demonstrate compliance with the relevant Technical Specifications for Interoperability (TSI) where appropriate.

4) An authorisation from the national safety authority (i.e. the Railway Safety Directorate of the Office of Rail and Road) is required before the equipment is to be used in revenue earning service.

5) Supply Chain Arrangements

- 1) Certificates of acceptance do not imply any particular quantity of supply nor any exclusivity of supply.
- 2) Products may be purchased by Network Rail or its agents, suppliers or contractors.
- 3) Manufacturers should note that it is not necessary to enter into any exclusive supply arrangements with resellers or other suppliers.