



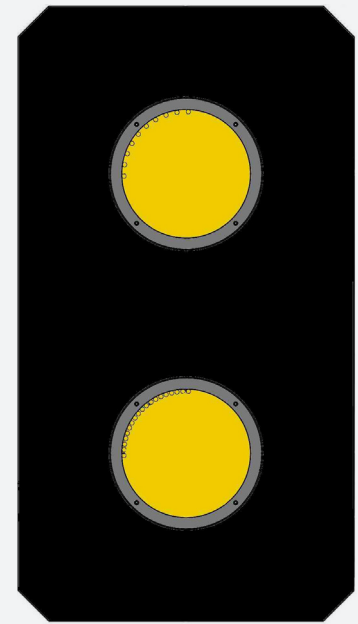
Performance in motion



# Classic Colour Light Signal



# The Classic CLS is a searchlight type signal introduced in the early 2000s.



It uses a single aperture Red, Yellow, Green Module for 1,2 and 3 aspect signals with the addition of a second Yellow only module to give 4 aspects, all of which can be flashed by the interlocking.

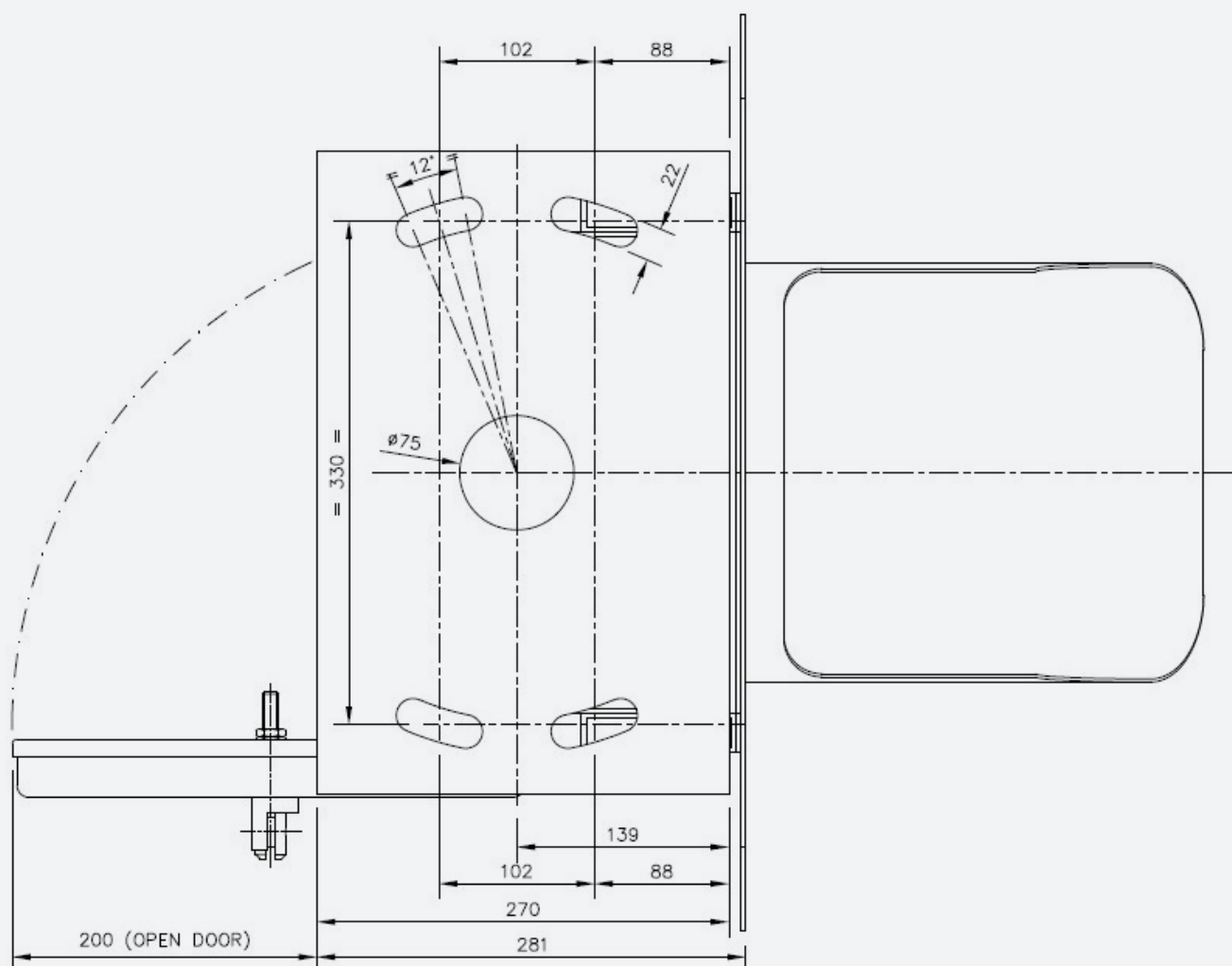
## Performance Characteristics

Product Approval Certificate	PA05/01515 (Long Range Modules) PA05/02706 (Medium Range Modules) PA05/01873 (Signal Housing)
Nominal Operating Voltage	110 Vac or 120 Vdc
Operating Voltage Range AC	88-121 V
Operating Voltage Range DC	88-145 V
Nominal Operating Current	300 mA at 110Vac
Electrical Connector Type	Free Wired to 2BA Terminal Bar
Ingress Protection Rating	IP 65
Operating Temperature Range	-25°C to +40°C
Readability	800m (Long Range) 250/400m (Medium)
Viewable Angle	+/- 3° at 800m +/- 10° at 400m +/- 12.5° at 250m
Product Weight	4 Aspect Head 43Kg 3 Aspect Tall Head 33Kg 3 Aspect Short Head 26Kg Module only 10Kg
For product instructions and dimensioned drawings please visit:	<a href="http://www.unipartdorman.co.uk">www.unipartdorman.co.uk</a>



## Product Configuration

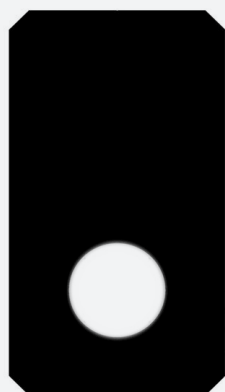
Baseplate – common to all variants.



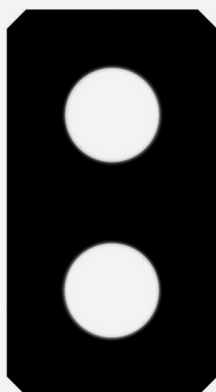
## Product Configuration

Tall 3 Aspect and 4 Aspect signal dimensions are the same regardless of variant.

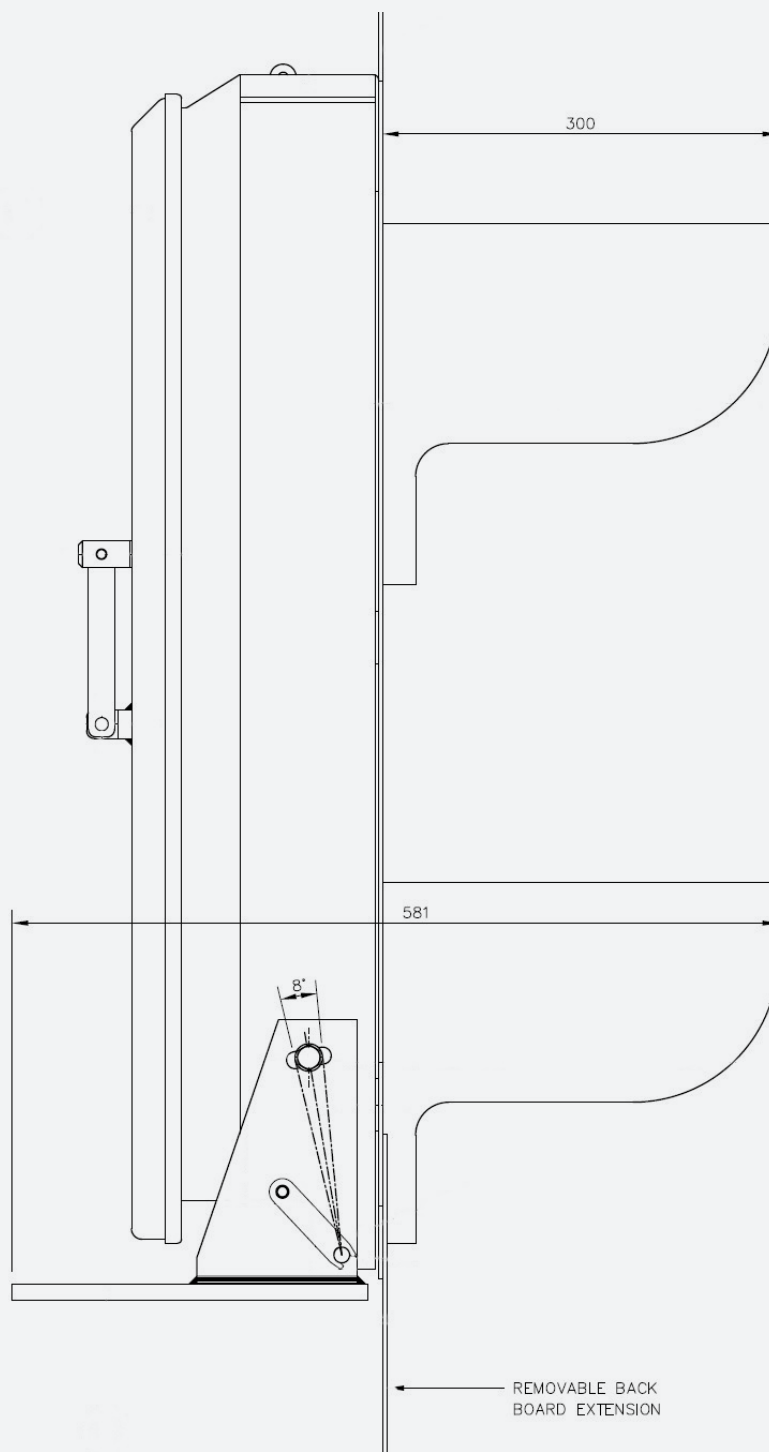
The standard hood length is 300mm and the extended is 550mm. Tunnel heads are fitted with a 75mm visor.



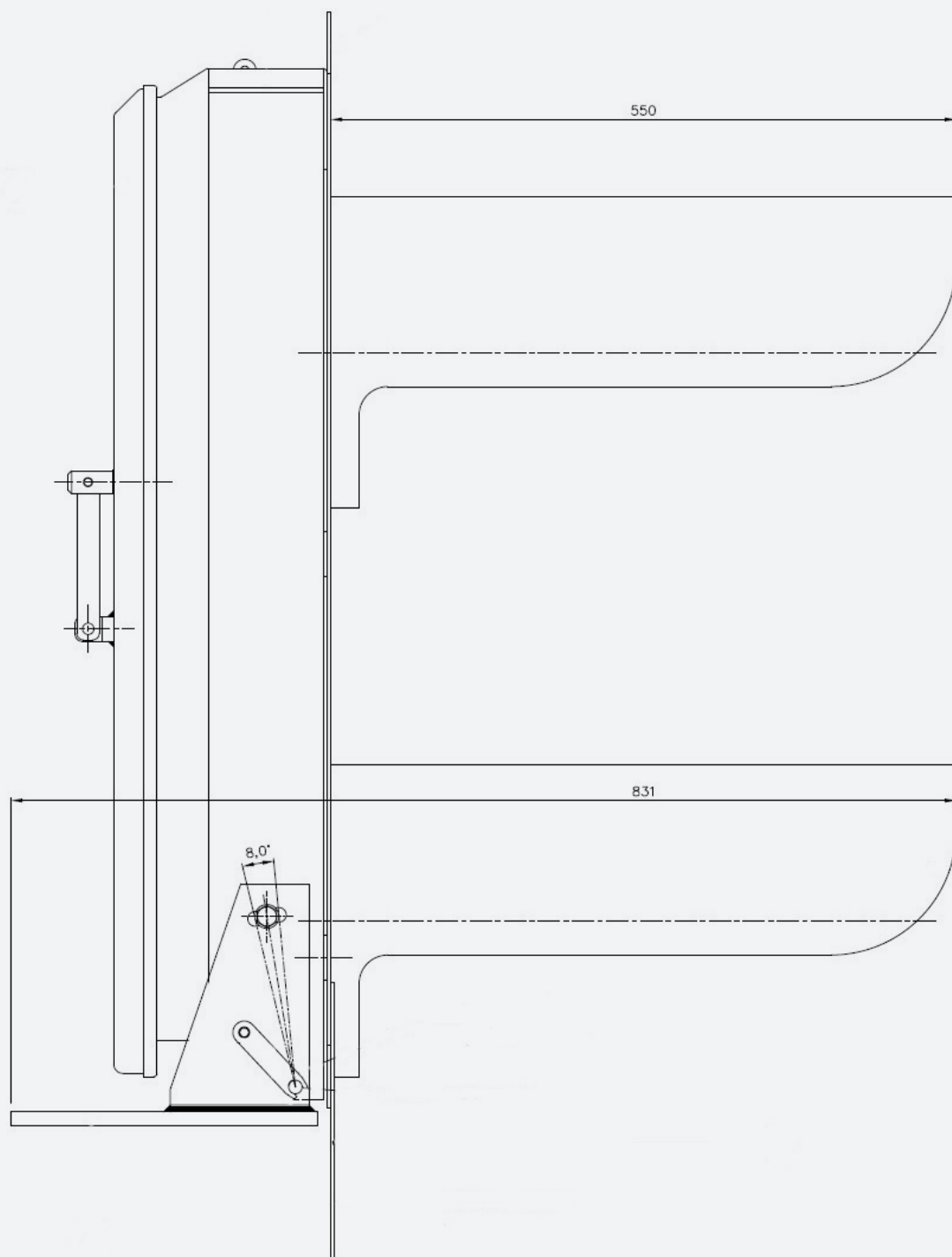
**Tall 3 Aspect**



**4 Aspect**

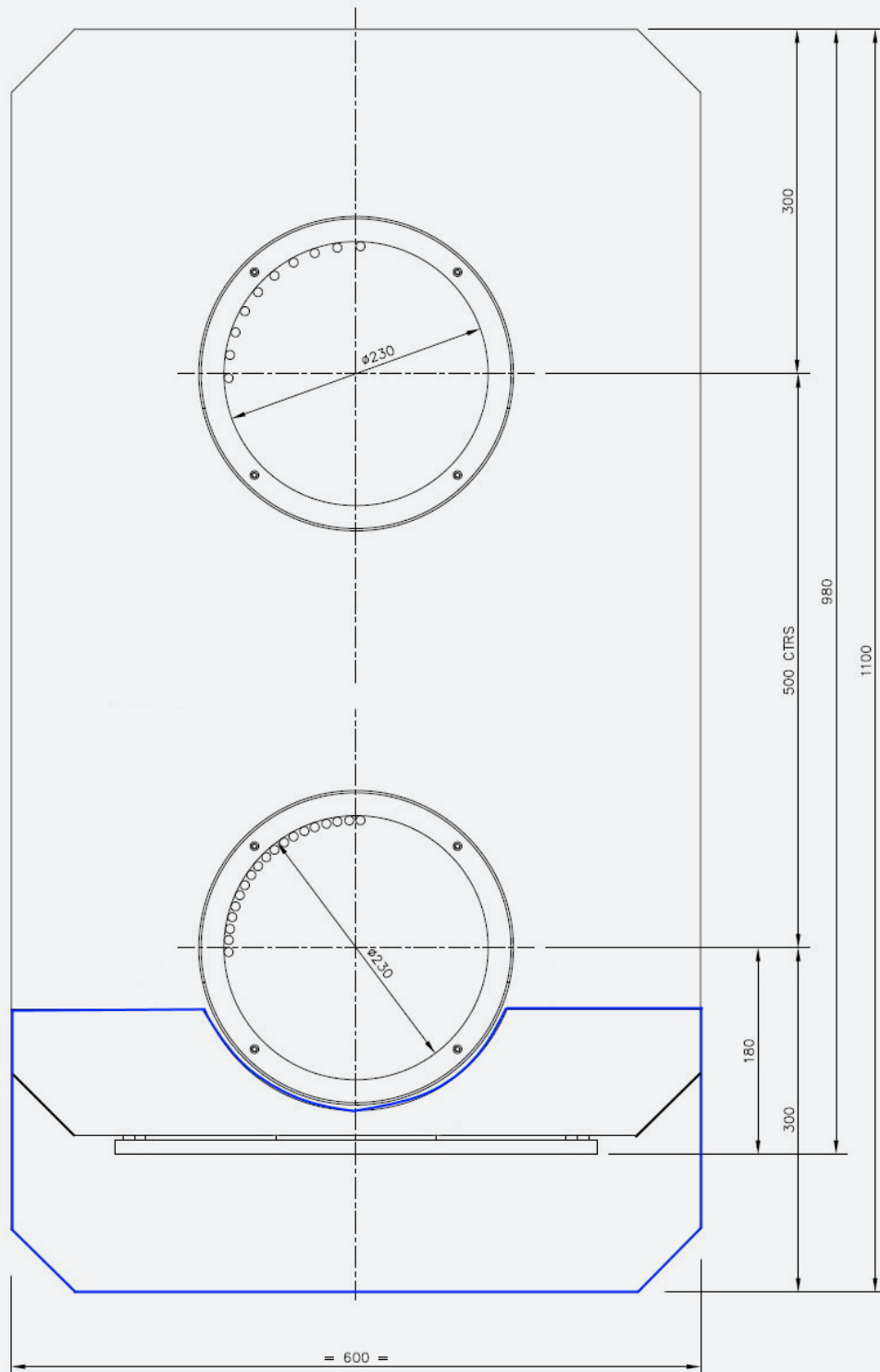


## Product Configuration

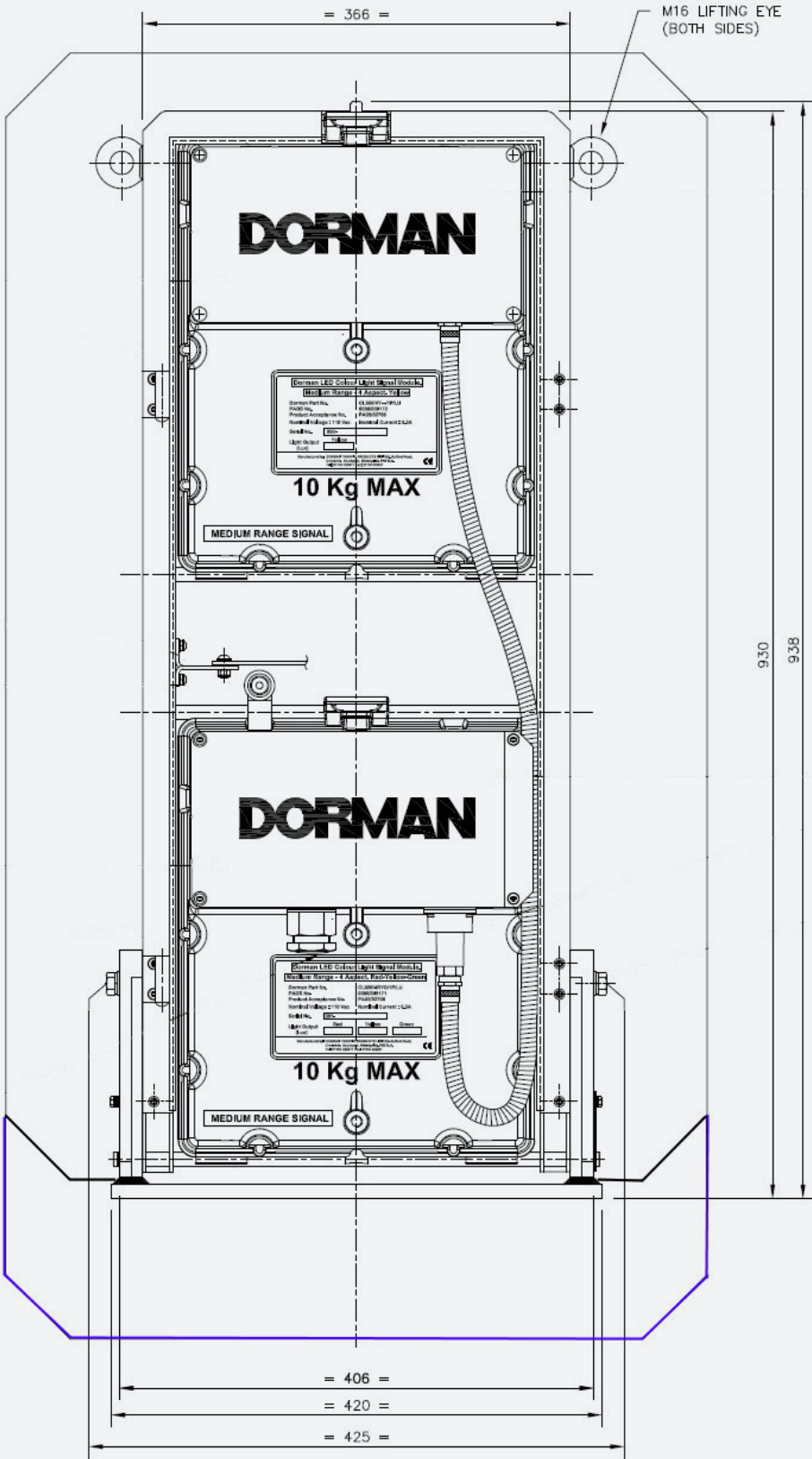


## Product Configuration

(3 Aspect tall Housing and 4 Aspect)

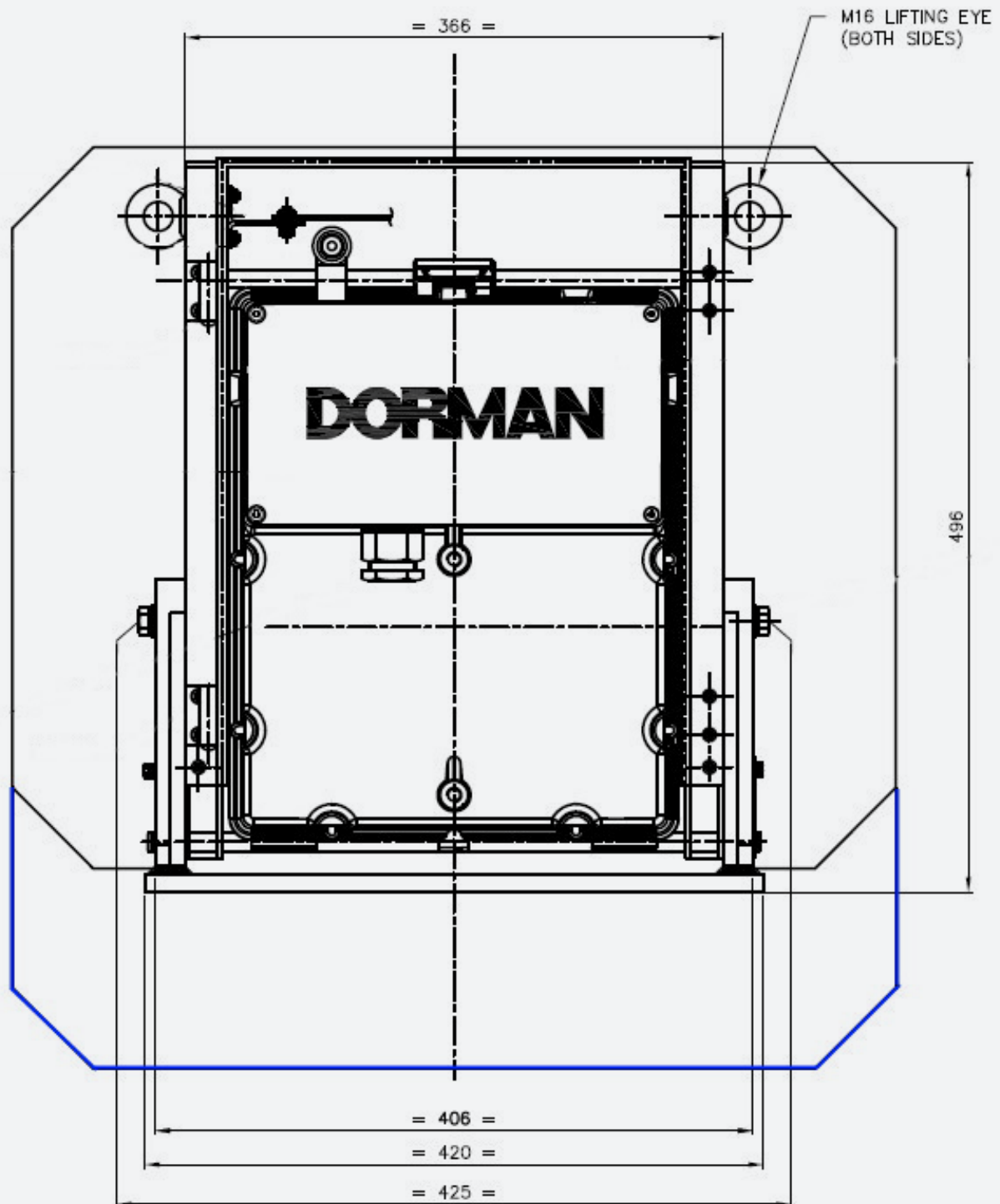


# Product Configuration



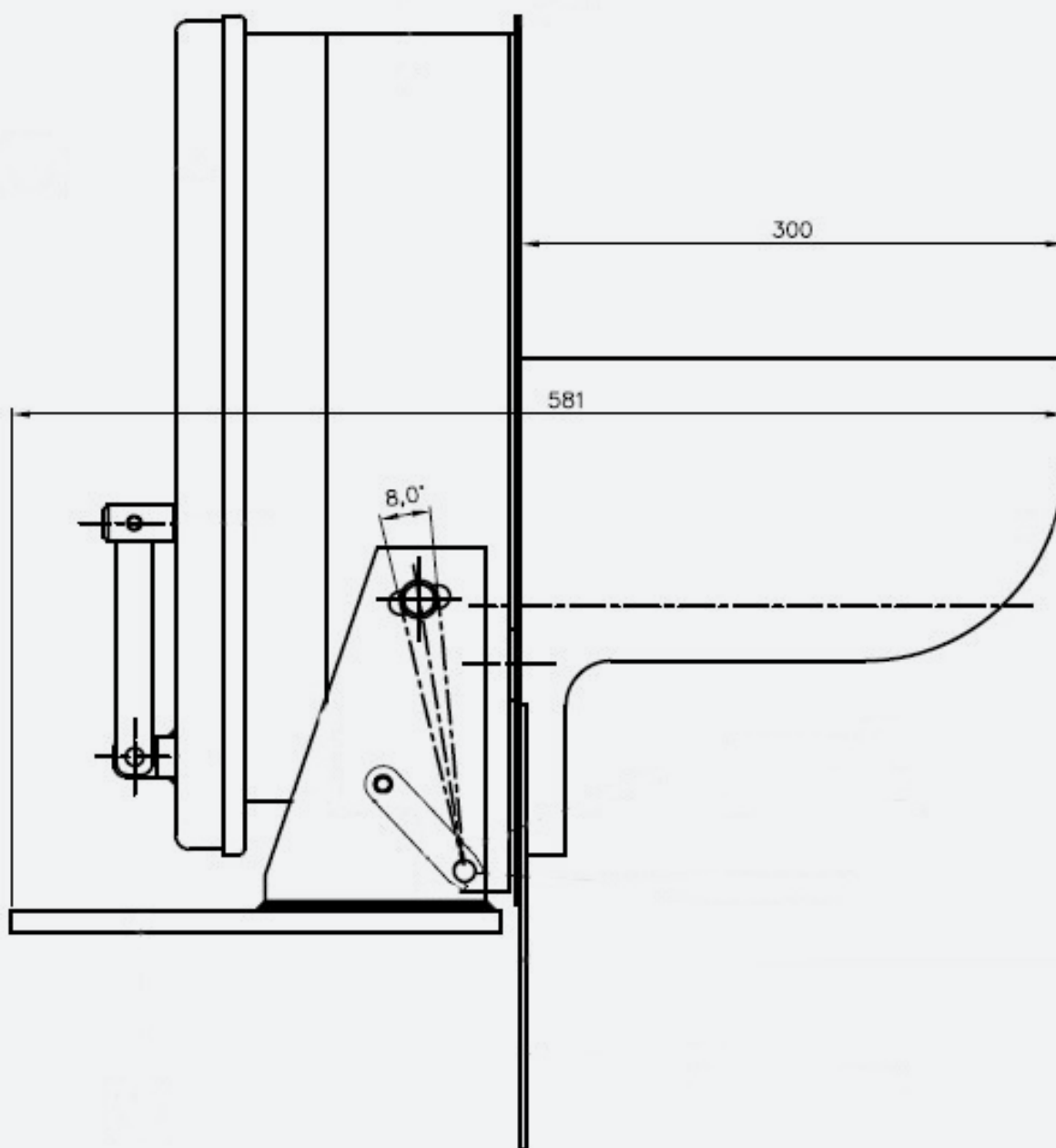
## Product Configuration

(3 Aspect Short Housing)

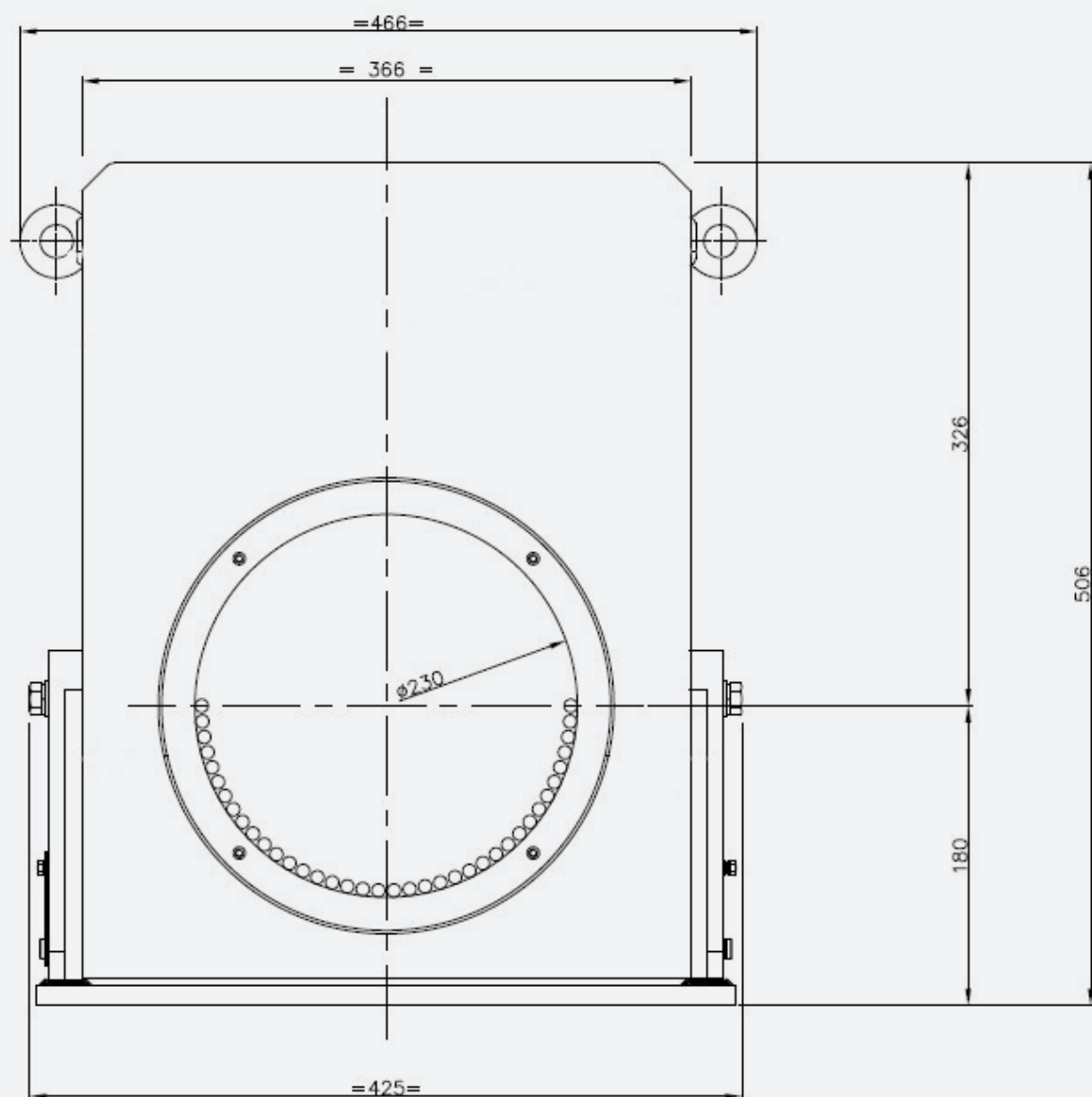




## Product Configuration

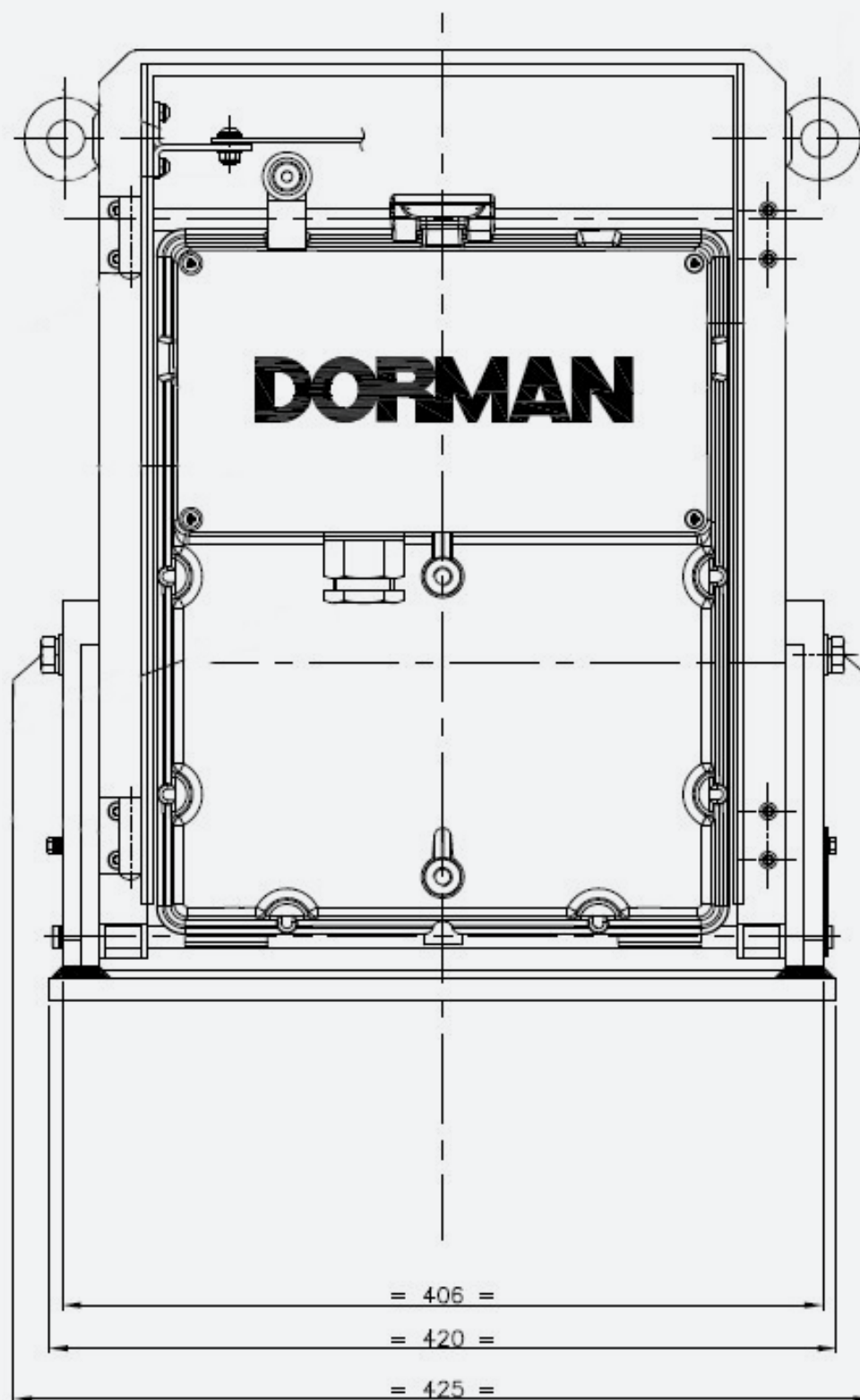


## Product Configuration

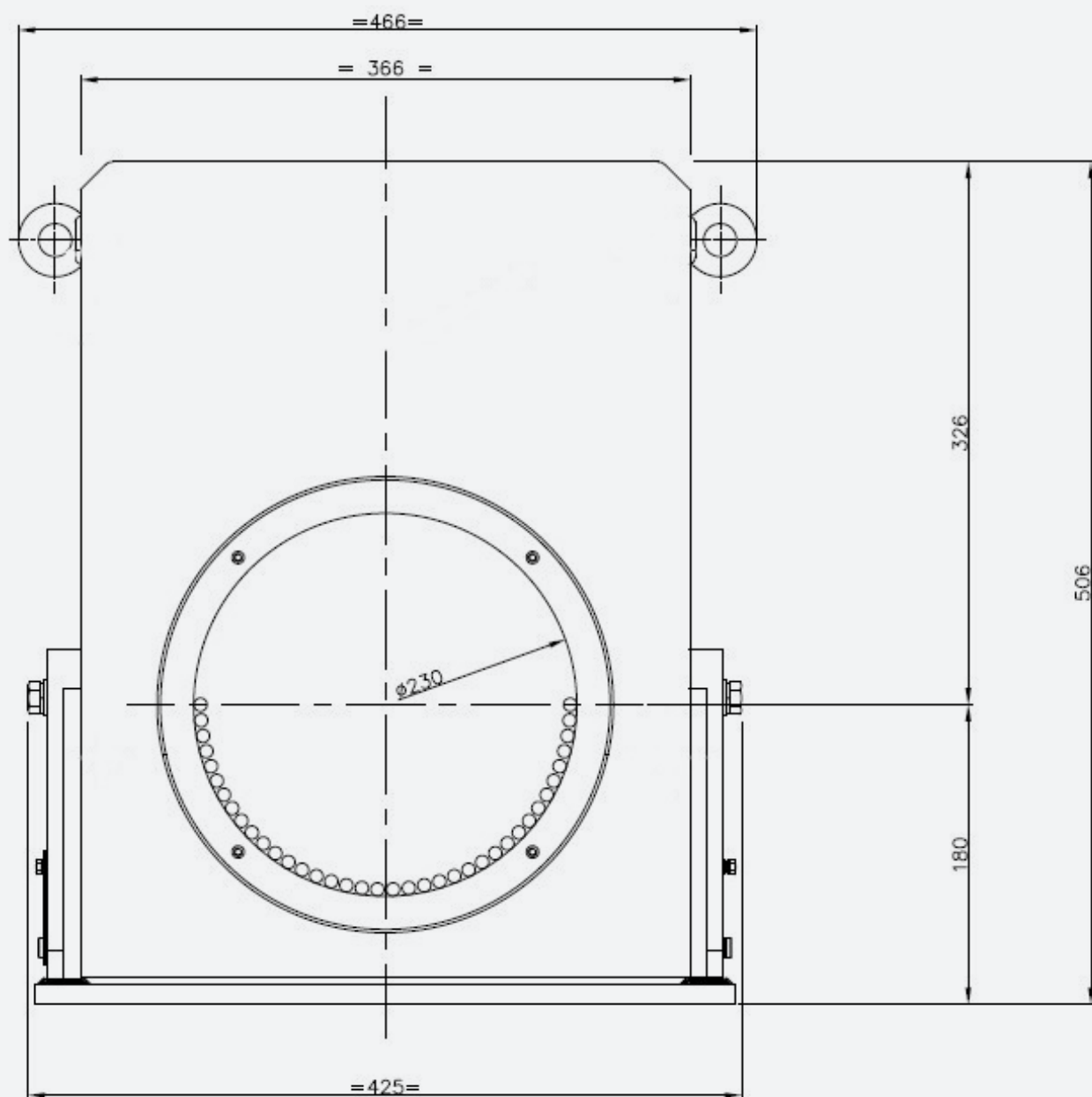


## Product Configuration

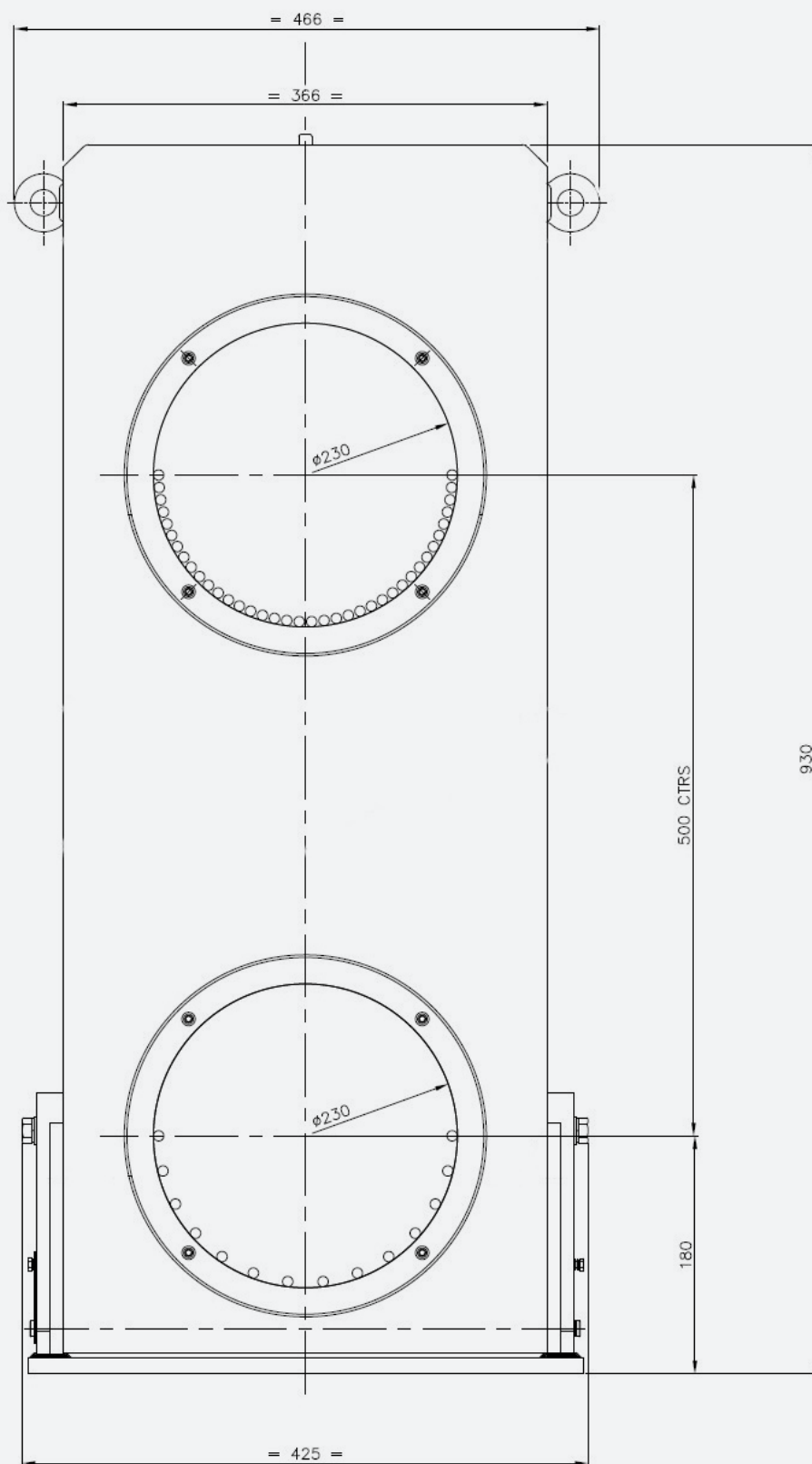
(3 Aspect Tunnel)



## Product Configuration

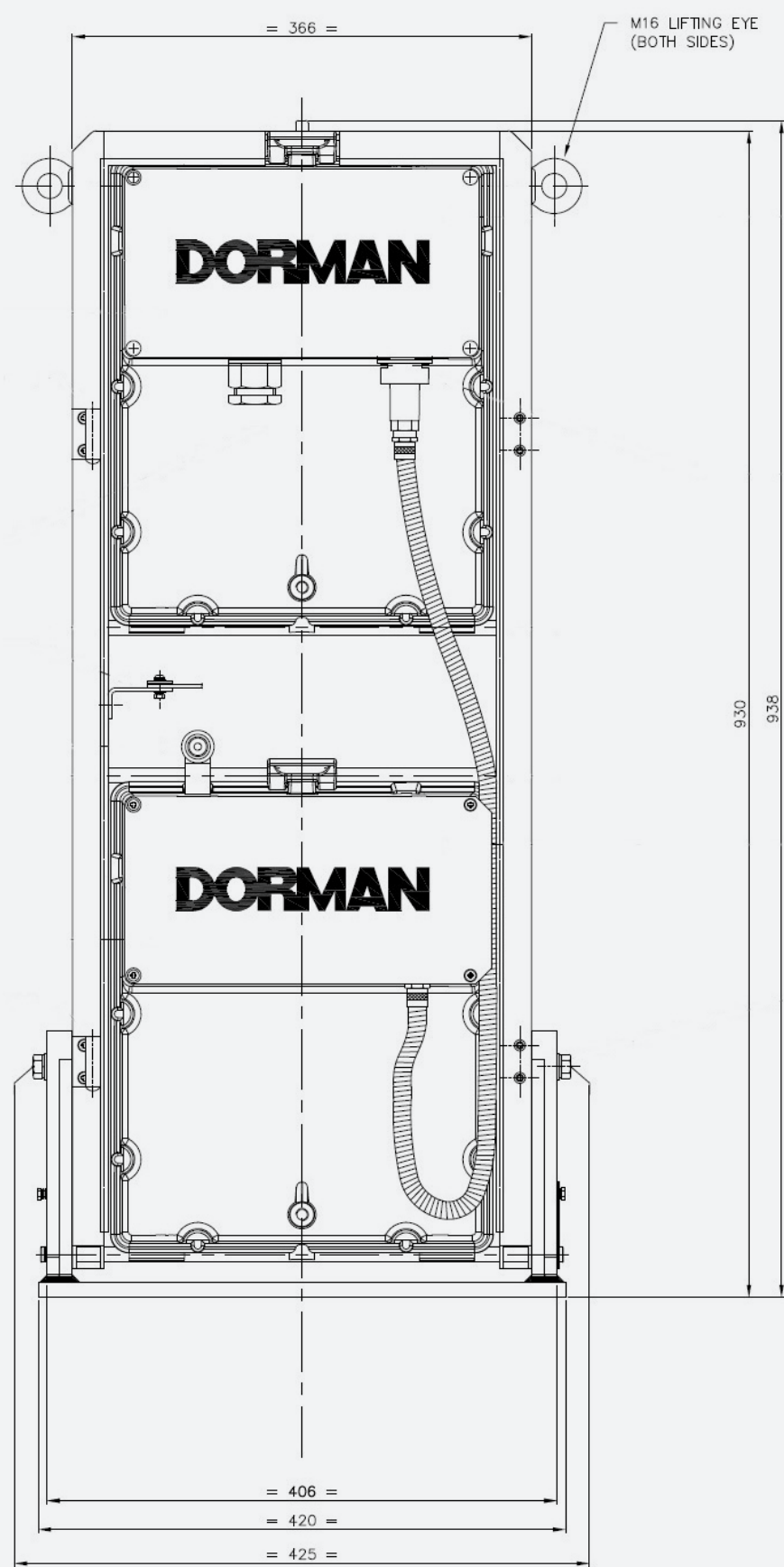


## Product Configuration



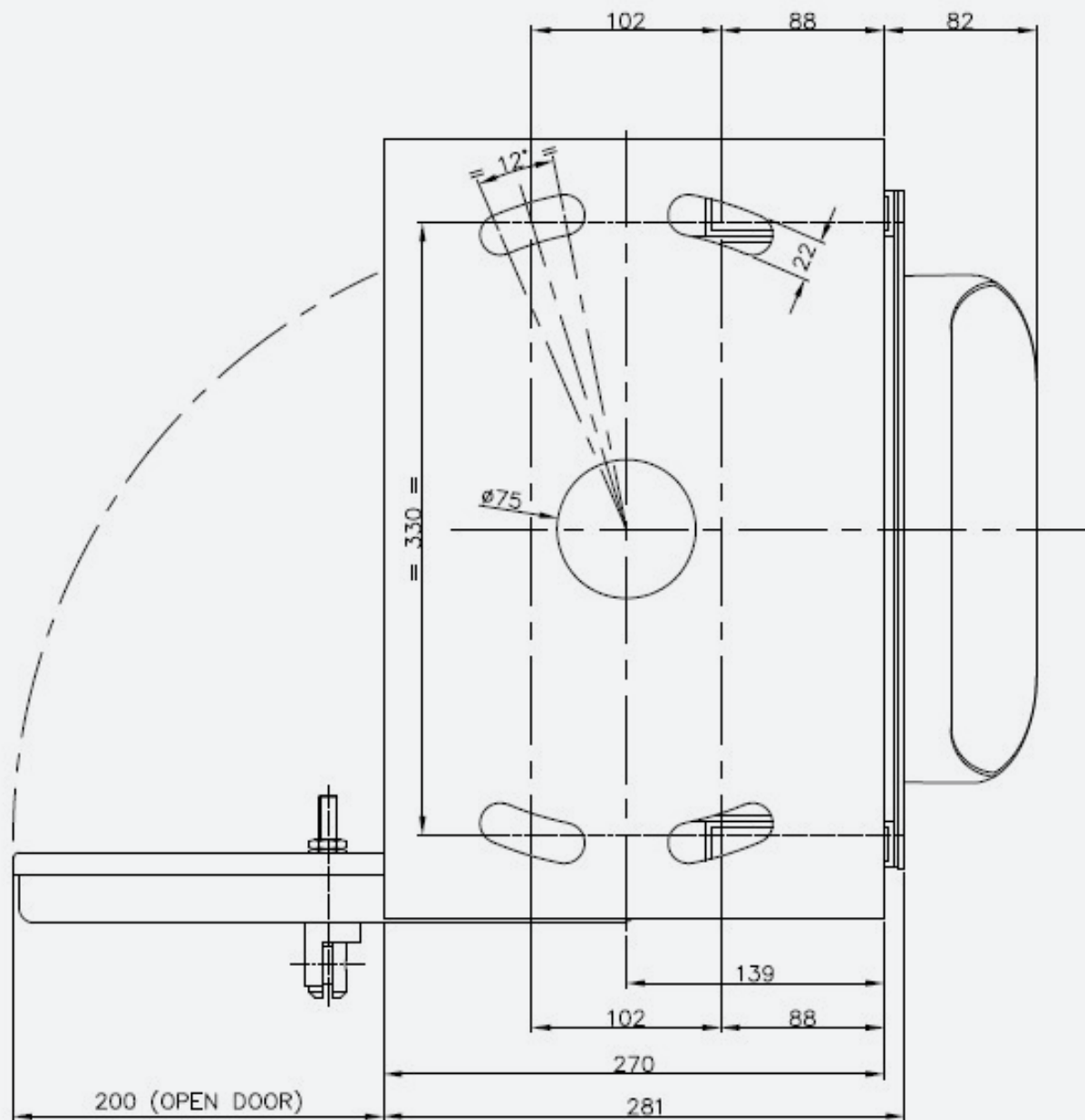


# Product Configuration



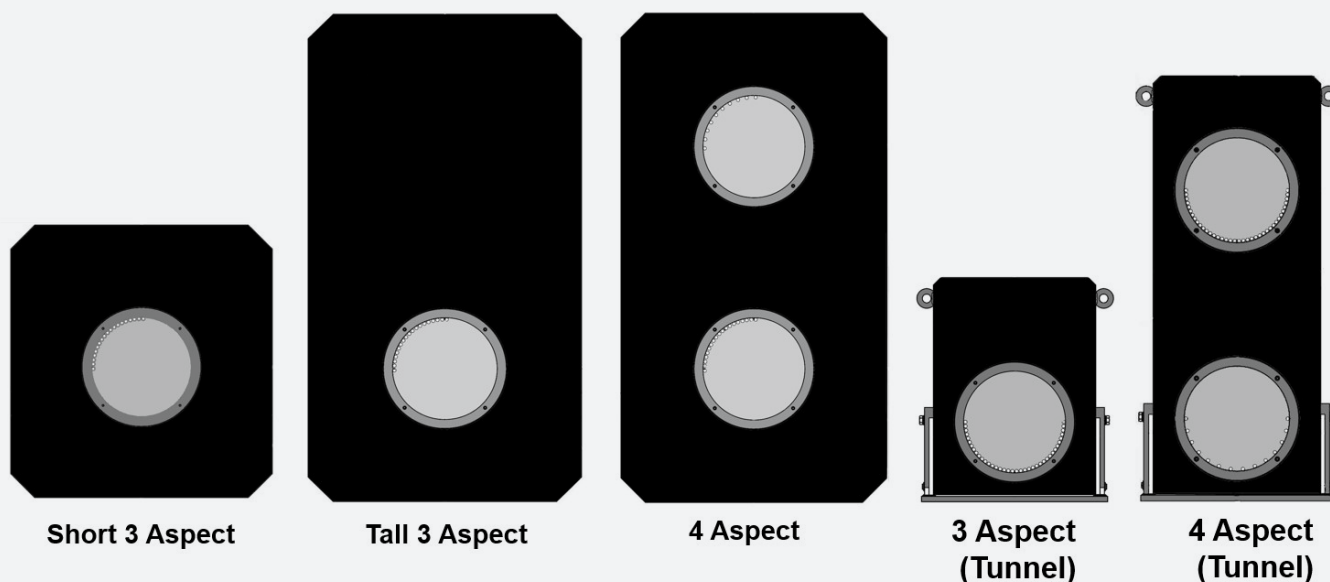
## Product Configuration

(Common Base for Tunnel Heads)



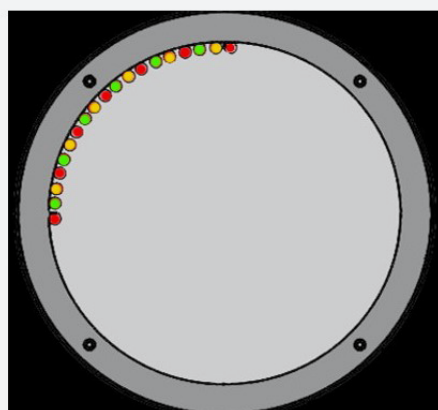
## Product Configuration

Different head types can be specified as shown below and are fitted with either long or short range modules. A range of visors, backboards and other accessories are also available.

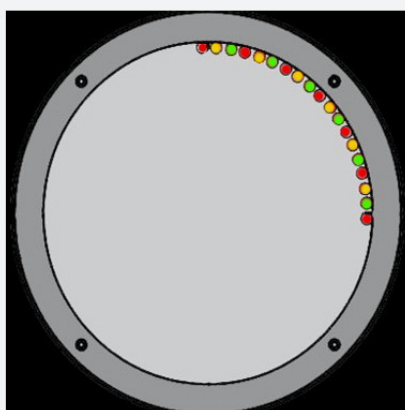


### Close Up Viewing

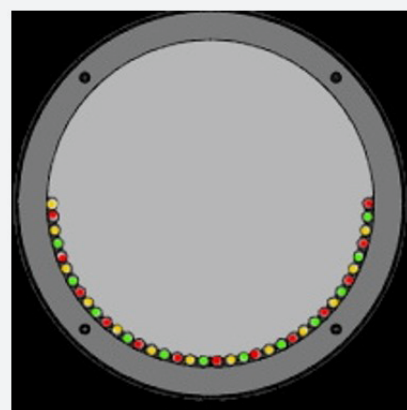
Because there is no 'Hot Strip' on the lens an additional row of LEDs are fitted at a different angle which mimic the main aspect colour.



**Left Hand  
Upper (LUQ)**  
for mounting to  
the left of the  
track above  
2750mm



**Right Hand  
Upper (RUQ)**  
for mounting to  
the right of the  
track above  
2750mm



**Bottom Half  
(BH)** for  
mounting  
either side of  
the track below  
2750mm and in  
Tunnels

## Catalogue Numbers

### Long Range Heads

Catalogue Number	Unipart Dorman Part Number	Description
0086/009152	CLSH/3RYG/1P/LU	3 Aspect CLS, Tall Housing, LUQ
0086/009153	CLSH/3RYG/1P/RU	3 Aspect CLS, Tall Housing, RUQ
0086/009158	CLSH/RYG/1P/LU	4 Aspect CLS, Tall Housing, LUQ
0086/009159	CLSH/RYG/1P/RU	4 Aspect CLS, Tall Housing, RUQ
0086/009155	CLSH/SRYG/1P/LU	3 Aspect CLS, Short Housing, LUQ
0086/009156	CLSH/SRYG/1P/RU	3 Aspect CLS, Short Housing, RUQ

### Long Range Heads with 550mm Extended Visors

Catalogue Number	Unipart Dorman Part Number	Description
0086/109152	CLSE/3RYG/1P/LU	3 Aspect CLS, Tall Housing, LUQ 550mm Visors
0086/109153	CLSE/3RYG/1P/RU	3 Aspect CLS, Tall Housing, RUQ 550mm Visors
0086/109158	CLSE/RYG/1P/LU	4 Aspect CLS, Tall Housing, LUQ 550mm Visors
0086/109159	CLSE/RYG/1P/RU	4 Aspect CLS, Tall Housing, RUQ 550mm Visors
0086/109155	CLSE/SRYG/1P/LU	3 Aspect CLS, Short Housing, LUQ 550mm Visors
0086/109156	CLSE/SRYG/1P/RU	3 Aspect CLS, Short Housing, RUQ 550mm Visors



## Catalogue Numbers

### Medium Range Heads

Catalogue Number	Unipart Dorman Part Number	Description
0086/009040	CLMH/RYG/1P/LU	4 Aspect CLS, Tall Housing, LUQ
0086/009041	CLMH/3RYG/1P/LU	3 Aspect CLS, Tall Housing, LUQ
0086/009042	CLMH/SRYG/1P/LU	3 Aspect CLS, Short Housing, LUQ
0086/009043	CLMH/RYG/1P/RU	4 Aspect CLS, Tall Housing, RUQ
0086/009044	CLMH/3RYG/1P/RU	3 Aspect CLS, Tall Housing, RUQ
0086/009045	CLMH/SRYG/1P/RU	3 Aspect CLS, Short Housing, RUQ

### Medium Range Heads with 550mm Extended Visors

Catalogue Number	Unipart Dorman Part Number	Description
0086/109040	CLME/RYG/1P/LU	4 Aspect CLS, Tall Housing, LUQ 550mm Visors
0086/109041	CLME/3RYG/1P/LU	3 Aspect CLS, Tall Housing, LUQ 550mm Visors
0086/109042	CLME/SRYG/1P/LU	3 Aspect CLS, Short Housing, LUQ 550mm Visors
0086/109043	CLME/RYG/1P/RU	4 Aspect CLS, Tall Housing, RUQ 550mm Visors
0086/109044	CLME/3RYG/1P/RU	3 Aspect CLS, Tall Housing, RUQ 550mm Visors
0086/109045	CLME/SRYG/1P/RU	3 Aspect CLS, Short Housing, RUQ 550mm Visors



# Catalogue Numbers

## Ground & Tunnel Heads

Catalogue Number	Unipart Dorman Part Number	Description
0086/009154	CLGH/3RYG/1P/BH	3 Aspect Ground Head
0086/009160	CLGH/RYG/1P/BH	4 Aspect Ground Head
0086/009165	CLTH/3RYG/1P/BH	3 Aspect Tunnel Head
0086/009167	CLTH/RYG/1P/BH	4 Aspect Tunnel Head
0086/009046	CLMH/3RYG/1P/BH	3 Aspect Ground Head Medium Range
0086/009047	CLMH/RYG/1P/BH	4 Aspect Ground Head Medium Range

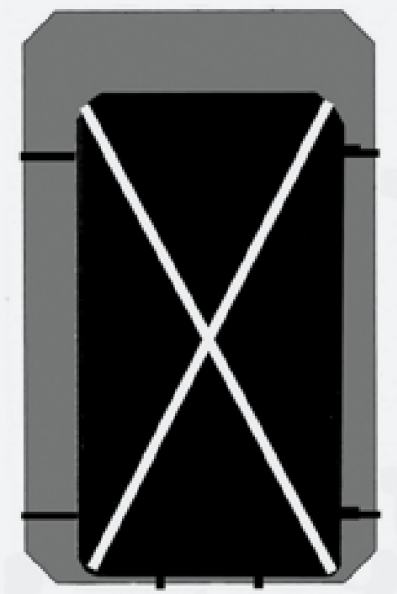


# Catalogue Numbers

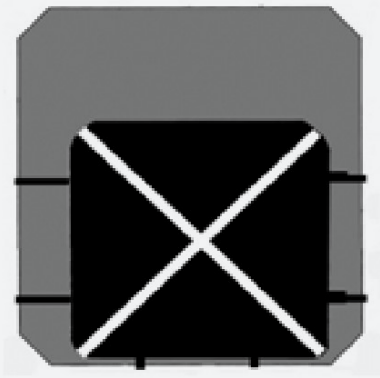
## Out of Use Masks

Catalogue Number	Description
0086/009103	OoU Mask for Short Housings
0086/009104	OoU Mask for Short Housings fitted with 550mm Visors
0086/009105	OoU Mask for Tall Housings
0086/009106	OoU Mask for Tall Housings fitted with 550mm Visors
0086/009016	Lens Blanking Plate

If the signal could be be lit with the OoU Mask fitted, Lens Blanking Plates must be used to eliminate any light leakage around the sides of the mask.



4 Aspect OoU Mask



3 Aspect OoU Mask



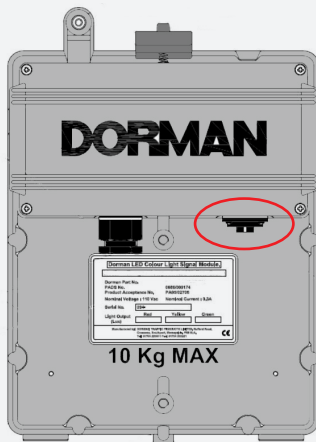
Lens Blanking Plate

## Module Selection

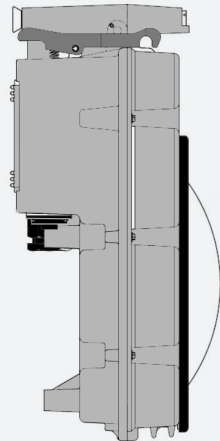
Spare modules are available for the complete range of Classic Colour Light Signals.

Care should be exercised to ensure the correct modules are selected by taking into account the range and beam angle (Long Range or Medium Range) and also the type of head the module is to be fitted to.

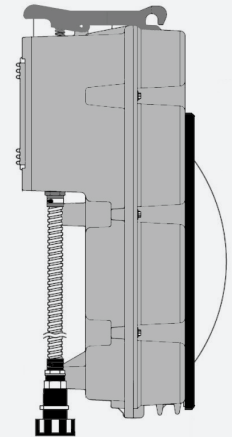
Where the module is to be used in a 4 aspect signal head, it is important that the RYG module selected has the socket for the umbilical cable that supplies power and the lamp proving capability to the Second Yellow Module. (The Second Yellow Module is always supplied with the umbilical cable).



RYG Module for a 4 Aspect Signal  
with the umbilical socket



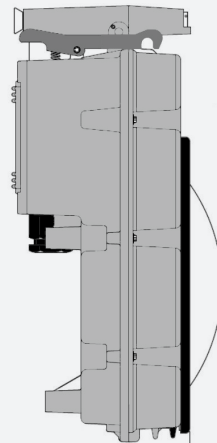
Second Yellow Module complete  
with the umbilical cable



The 3 Aspect Signal Module does not have the umbilical socket and is not compatible with a 4 Aspect signal.



RYG Module for a 3 Aspect Signal



# Catalogue Numbers

## Long Range Spare Modules

Catalogue Number	Unipart Dorman Part Number	Description
0086/009200	CLSM/3RYG/1P/LU	3 Aspect Signal RYG Module, LUQ
0086/009203	CLSM/3RYG/1P/RU	3 Aspect Signal RYG Module, RUQ
0086/009201	CLSM/4RYG/1P/LU	4 Aspect Signal RYG Module, LUQ
0086/009204	CLSM/4RYG/1P/RU	4 Aspect Signal RYG Module, LUQ
0086/009202	CLSM/4Y--/1P/LU	4 Aspect Signal 2nd Y Module, LUQ
0086/009205	CLSM/4Y--/1P/RU	4 Aspect Signal 2nd Y Module, RUQ
0086/009206	CLTM/3RYG/1P/BH	3 Aspect Signal RYG Module, BH
0086/009207	CLTM/4RYG/1P/BH	4 Aspect Signal RYG Module, BH
0086/009208	CLTM/4Y--/1P/BH	4 Aspect Signal 2nd Y Module, BH

Ensure that the RYG module selected matches the type of signal it is to be used in.

## Catalogue Numbers

### Medium Range Spare Modules

Catalogue Number	Unipart Dorman Part Number	Description
0086/009170	CLMM/3RYG/1P/LU	3 Aspect Signal RYG Module, LUQ
0086/009173	CLMM/3RYG/1P/RU	3 Aspect Signal RYG Module, RUQ
0086/009176	CLMM/4RYG/1P/BH	4 Aspect Signal RYG Module, BH
0086/009171	CLMM/4RYG/1P/LU	4 Aspect Signal RYG Module, LUQ
0086/009174	CLMM/4RYG/1P/RU	4 Aspect Signal RYG Module, RUQ
0086/009177	CLMM/4Y--/1P/BH	4 Aspect Signal 2nd Y Module, BH
0086/009172	CLMM/4Y--/1P/LU	3 Aspect Signal 2nd Y Module, LUQ
0086/009175	CLMM/4Y--/1P/RU	4 Aspect Signal 2nd Y Module, RUQ
0086/009178	CLMM/3RYG/1P/BH	3 Aspect Signal RYG Module, BH

Ensure that the RYG module selected matches the type of signal it is to be used in.





# Catalogue Numbers

## Spare Signal Housings (supplied without modules)

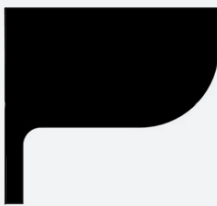
Catalogue Number	Unipart Dorman Part Number	Description
0086/009220	D86.85004A	4 Aspect Signal Housing
0086/009221	D86.85003A	3 Aspect Tall Signal Housing
0086/009222	D86.85010A	3 Aspect Short Signal Housing
0086/009223	D86.85018A	4 Aspect Tunnel Housing
TBA	D86.85054A	3 Aspect Tunnel Housing

## Spare Visors

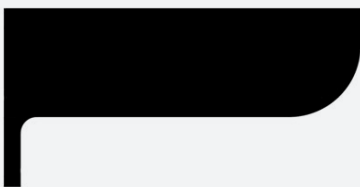
Catalogue Number	Unipart Dorman Part Number	Description
0086/009008	B86.85019	75mm Tunnel Head Visor
0086/009009	B20.19104	300mm Standard Visor
0086/009010	B86.85014	550mm Extended Visor
0086/009011	B86.85024	550mm Extended Visor (3/4 Round Obscuration)



75mm Visor  
\*TUNNEL ONLY\*



300mm Visor



550mm Extended Visor



550mm Extended Visor  
with 3/4 Round  
Obscuration Section

The grey section in the obscuration visor is to illustrate the extra 3/4 round section - the visor is uniformly black.

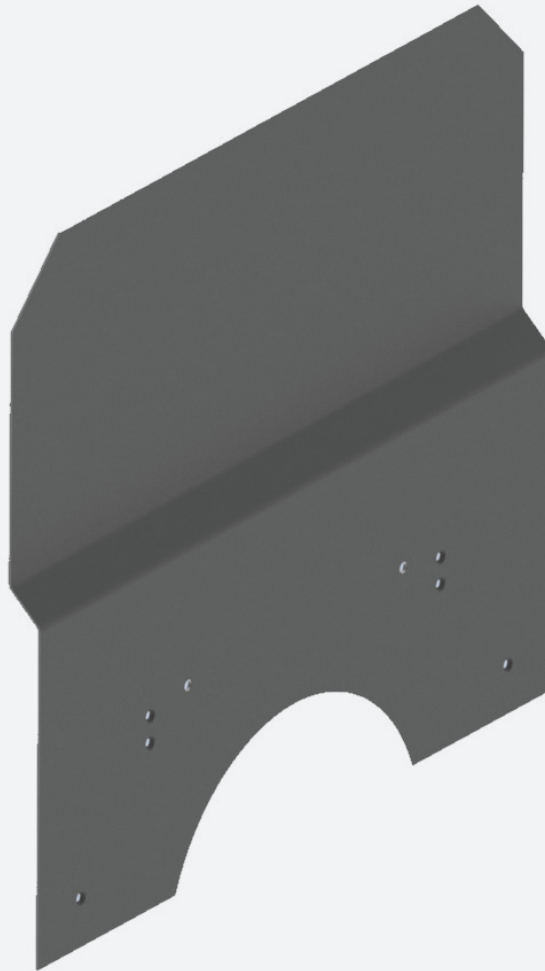
## Backboard Extensions

When a Colour Light Signal is installed with a Junction Route Indicator (JRI) Above It there may be a gap between the top of the standard CLS backboard and the bottom edge of the JRI backboard which can allow light from behind the signal to bleed through and make reading it difficult for the driver.

Unipart Dorman manufactures Upper Backboard Extension kits to fill the gap and to enable the Backboard Extension to be fitted even where there is a mismatch between the two backboard edges, a 25mm offset or 'Joggle' is incorporated.

The kits use screw positions already incorporated in a standard backboard so no modification is required.

Backboards which need a section removed to accommodate Position 3, 6 and 3&6 JRI Arms are available.

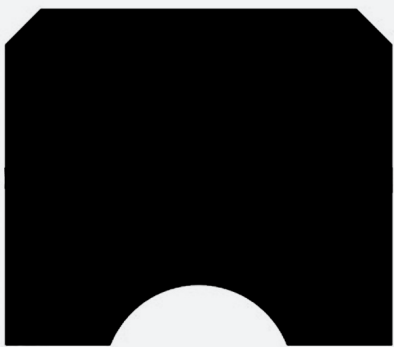


'Joggled' Full Width Backboard Extension

# Catalogue Numbers

Upper Backboard Extensions with a 25mm Joggle  
(for when the Classic CLS is installed with a Junction Route Indicator (JRI) Above It)

Catalogue Number	Unipart Dorman Part Number	Description
0086/009004	D86.85057	Full Width Upper Backboard Extension Plate
0086/009005	D86.85058	Upper Backboard Extension Plate Cut Out for a Position 3 JRI
0086/009006	D86.85059	Upper Backboard Extension Plate Cut Out for a Position 6 JRI
0086/009007	D86.85060	Upper Backboard Extension Plate Cut Out for a Position 3 & 6 JRI



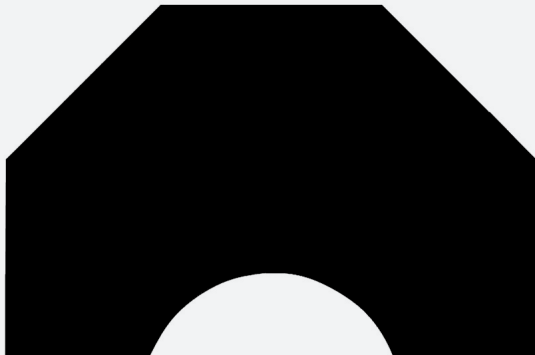
Full Width Backboard



Position 6 Backboard



Position 3 Backboard

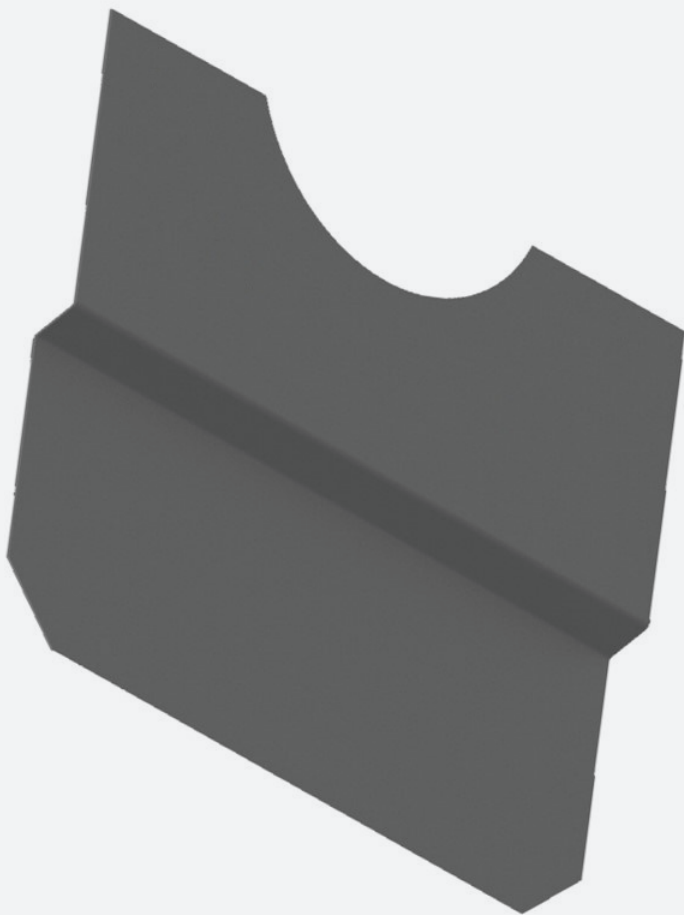


Position 3 & 6 Backboard

## Catalogue Numbers

There is also a full width lower back board extension which allows the CLS to be mounted on gantry structures etc whilst maintaining the mandated distance between the aspect centre and the edge of the backboard.

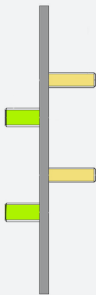
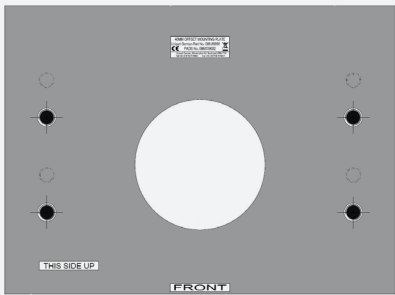
Catalogue Number	Unipart Dorman Part Number	Description
0086/009003	B20.19183	Lower Backboard Extension Plate (25mm Joggle)



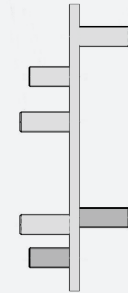
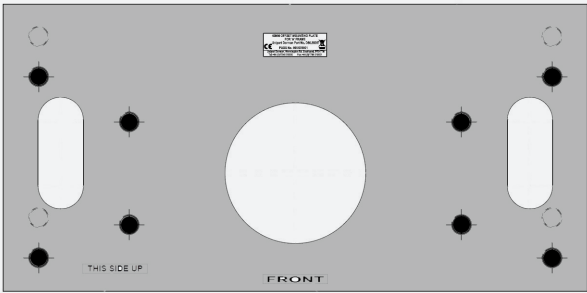
# Catalogue Numbers

Adaptor plates available which allow the CLS head to be offset on a structure

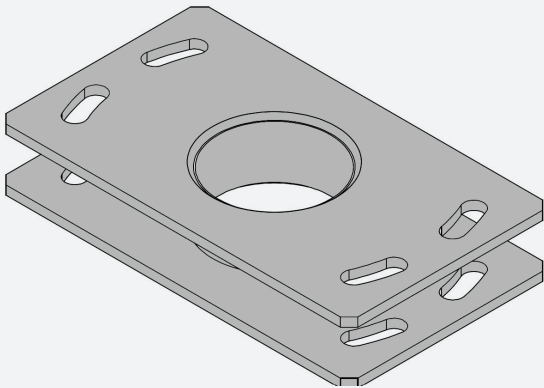
Catalogue Number	Unipart Dorman Part Number	Description
0086/009002	D86.85056	40mm Offset Mounting Plate
0086/009001	D86.8057	40mm Offset Mounting Plate For use with Type 'A' Frame
Please Contact Unipart Dorman	B20.19584	Horizontal Extender Plate



Standard 40mm Offset Mounting Plate with M20 studs on the top of the plate and M16 below.



40mm Offset Mounting Plate for use with a Type A frame (M20 studs on the top and bottom of the plate).



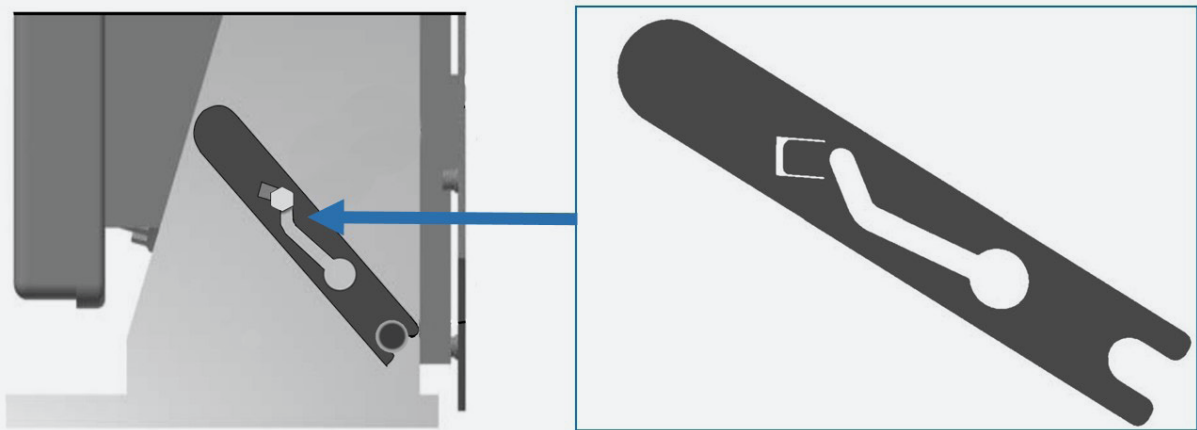
Horizontal Extender Plate used to increase the available alignment angle of the head.



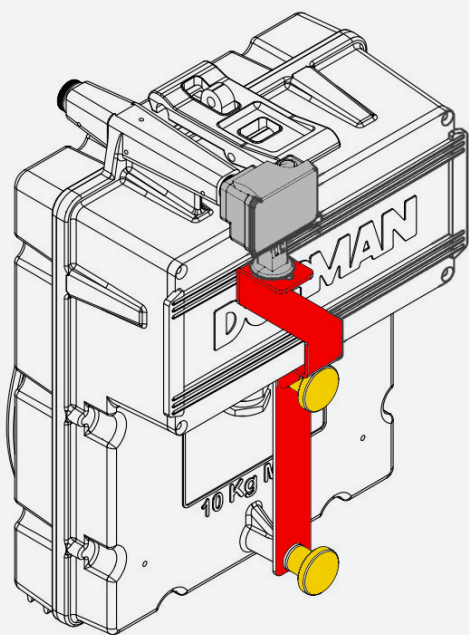
# Catalogue Numbers

## Spare Backboards

Catalogue Number	Unipart Dorman Part Number	Description
0086/000045	D86.85277	Pivot Bar Retainer Retrofit Kit (Packs of 10)
0086/008866	D86.85334	Camera Mounting Kit
0086/009014	D86.85052	Outer Lens Replacement Kit



Retrofit Pivot Bar Retainer Shown – Factory Fitted Retainer Plates perform the same function but are a different shape



Camera Mounting Kit  
(Camera Not Supplied)



Contact us today to learn  
how we can help your  
business improve reliability,  
efficiency and safety in  
railway operations.



Click or scan  
to contact us