



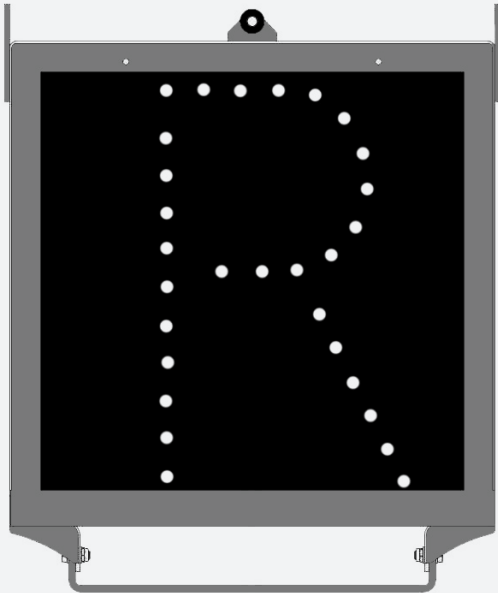
Performance in motion



Classic Standard Alphanumeric Route Indicators



The SARI displays a white character on a black background to indicate the route or platform to be used.



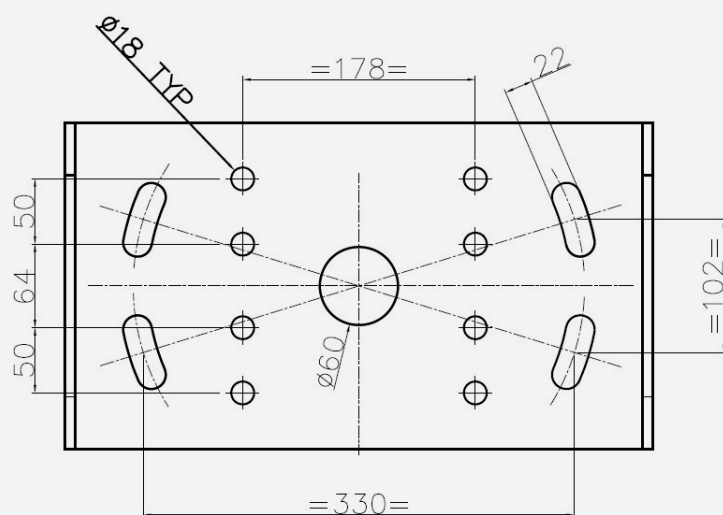
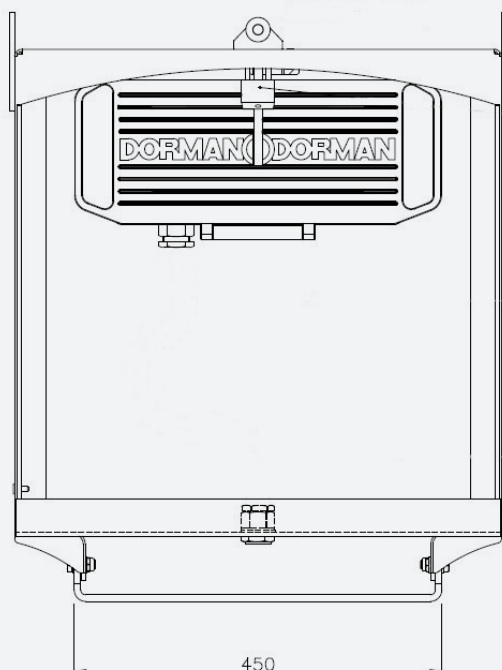
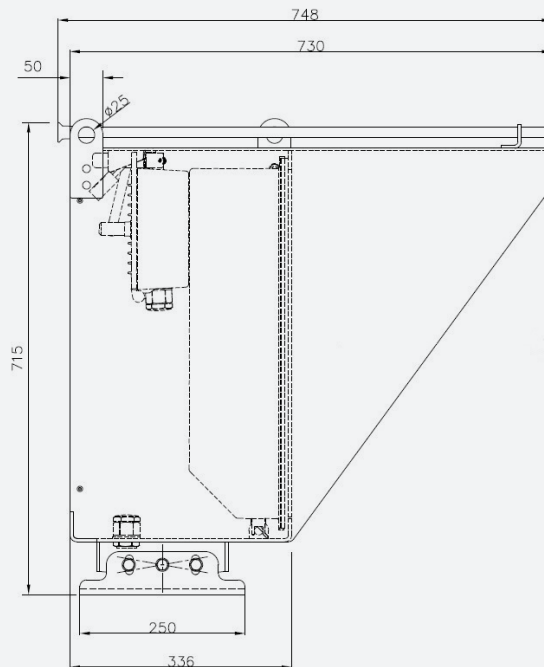
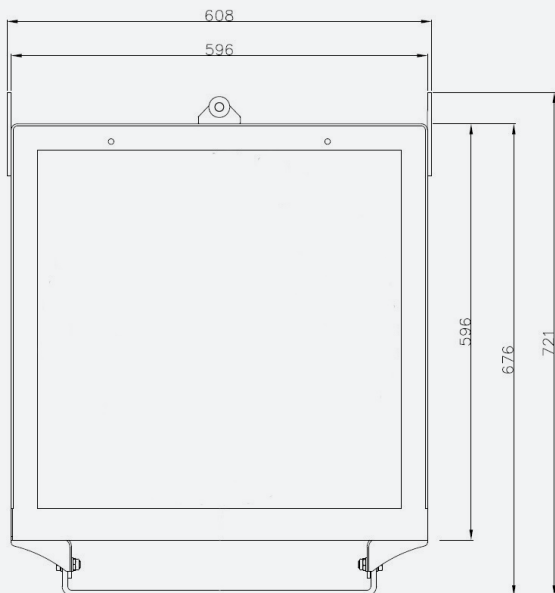
The norm is for single characters in Sans Gill font but on occasion a leading or trailing figure 1 may be incorporated.

Ordinarily 6 but up to 8 (and in some cases 9) indications can be specified and a standard order form is used to simplify this process.

Performance Characteristics

Product Approval Certificate	PA05/02433
Nominal Operating Voltage	110 Vac or 120 Vdc
Operating Voltage Range AC	88-121 V
Operating Voltage Range DC	88-145 V
Nominal Operating Current	300 mA at 110Vac or 500mA at 110Vac (2 state only)
Electrical Connector Type	Free Wired to 2BA Terminal Bar
Ingress Protection Rating	IP 65
Operating Temperature Range	-25°C to +40°C
Readability	250m
Viewable Angle	+/- 45° at 100m
Product Weight	35 Kg
For product instructions and dimensioned drawings please visit:	www.unipartdorman.co.uk

Product Configuration



Baseplate designed to be used on either
BRS-SM-2076 or BRS-SM-65/10 Mountings

Order Detail

Each SARI is a bespoke manufacture and the special to type order form should be obtained from Unipart Rail and completed to ensure the correct indications are specified.

Throughout the order, manufacture and installation process an alphanumeric format is used to standardise PCB design, ordering, manufacture and signal circuit design.

The examples below show the limits on character allocation and show each distinct indication separated using a colon :

Order Received	Alphanumeric Form	Order Form Example						
A, 1, B, 2, C, 3	A:B:C:1:2:3	<table><tr><td>A</td><td>B</td><td>C</td><td>1</td><td>2</td><td>3</td></tr></table>	A	B	C	1	2	3
A	B	C	1	2	3			
3, F, 15, S	F:S:3:15	<table><tr><td>F</td><td>S</td><td>3</td><td>15</td><td></td><td></td></tr></table>	F	S	3	15		
F	S	3	15					

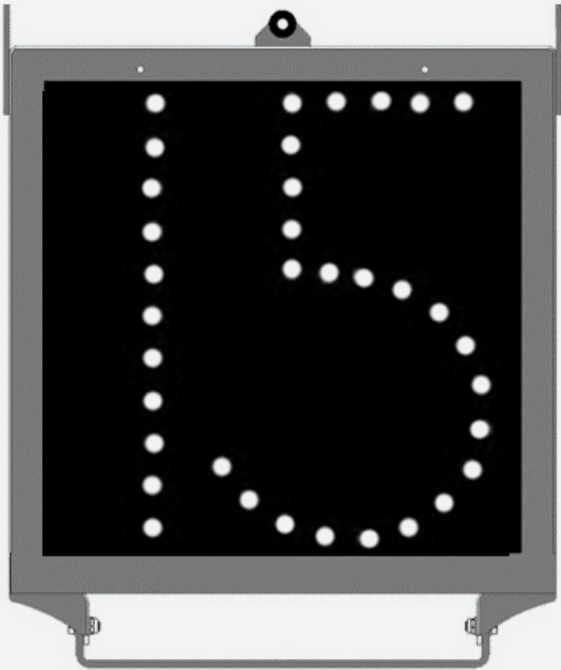
Once Manufacturing Has Started the Display Configuration CANNOT Be Changed

Ordering

Indicators

Catalogue Number	Unipart Dorman Part Number	Description
0086/021040	T/SPECIAL1IND/1S	SARI Displaying 1 Indication
0086/021040	T/SPECIAL2IND/1S	SARI Displaying 2 Indications
0086/021040	T/SPECIAL3IND/1S	SARI Displaying 3 Indications
0086/021040	T/SPECIAL4IND/1S	SARI Displaying 4 Indications
0086/021040	T/SPECIAL5IND/1S	SARI Displaying 5 Indications
0086/021040	T/SPECIAL6IND/1S	SARI Displaying 6 Indications
0086/021040	T/SPECIAL7IND/1S	SARI Displaying 7 Indications*
0086/021040	T/SPECIAL8IND/1S	SARI Displaying 8 Indications*
0086/021040	T/SPECIAL9IND/1S	SARI Displaying 9 Indications*

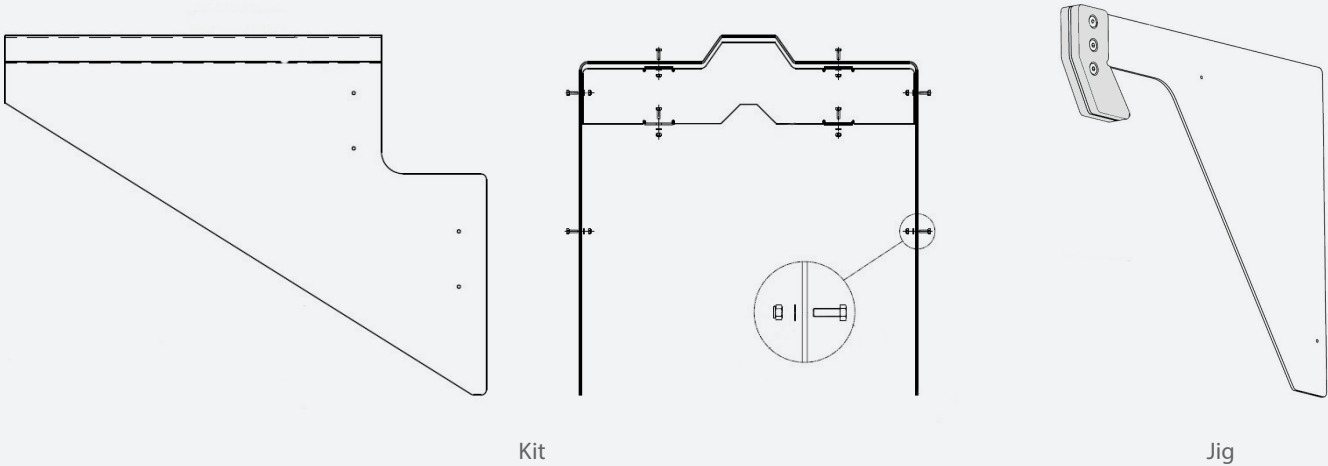
* These SARI and where a leading 1 is required should always have their indications confirmed by Unipart Dorman for feasibility



Ordering

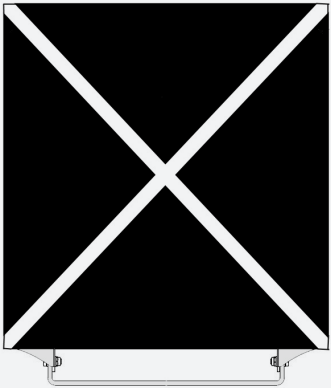
Visor Extension Kit

Catalogue Number	Unipart Dorman Part Number	Description
0050/610343	D82.87039	Visor Extension Fitting Kit
0050/610344	B20.20300	Visor Extension Hole Alignment Jig



Out of Use Mask

Catalogue Number	Unipart Dorman Part Number	Description
0050/000729	B22.21111	Out of Use Mask



Contact us today to learn
how we can help your
business improve reliability,
efficiency and safety in
railway operations.



Click or scan
to contact us