



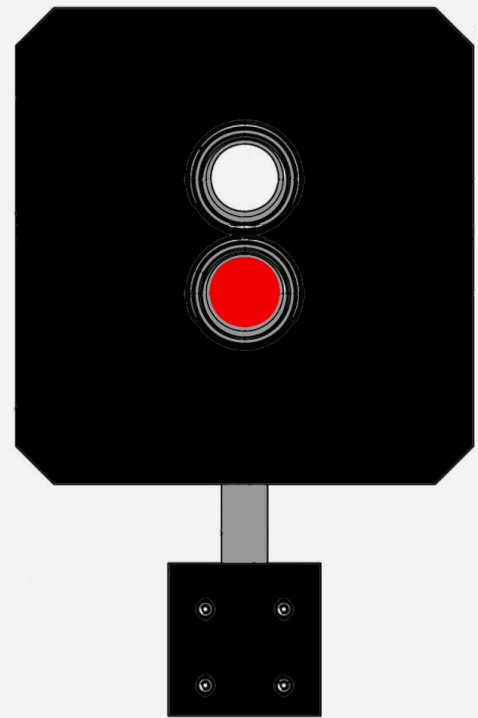
Performance in motion



Driver's Crossing Indicator



The Unipart Dorman Driver's Crossing Indicator (DCI) indicates to the driver that they are to stop and ensure the crossing is safe and clear before proceeding.



Using a 120FpM red light (flash controller incorporated within the module) or a steady white light (which can be flashed from an external source if required), that the level crossing is working correctly and providing the crossing is clear it is safe to proceed.

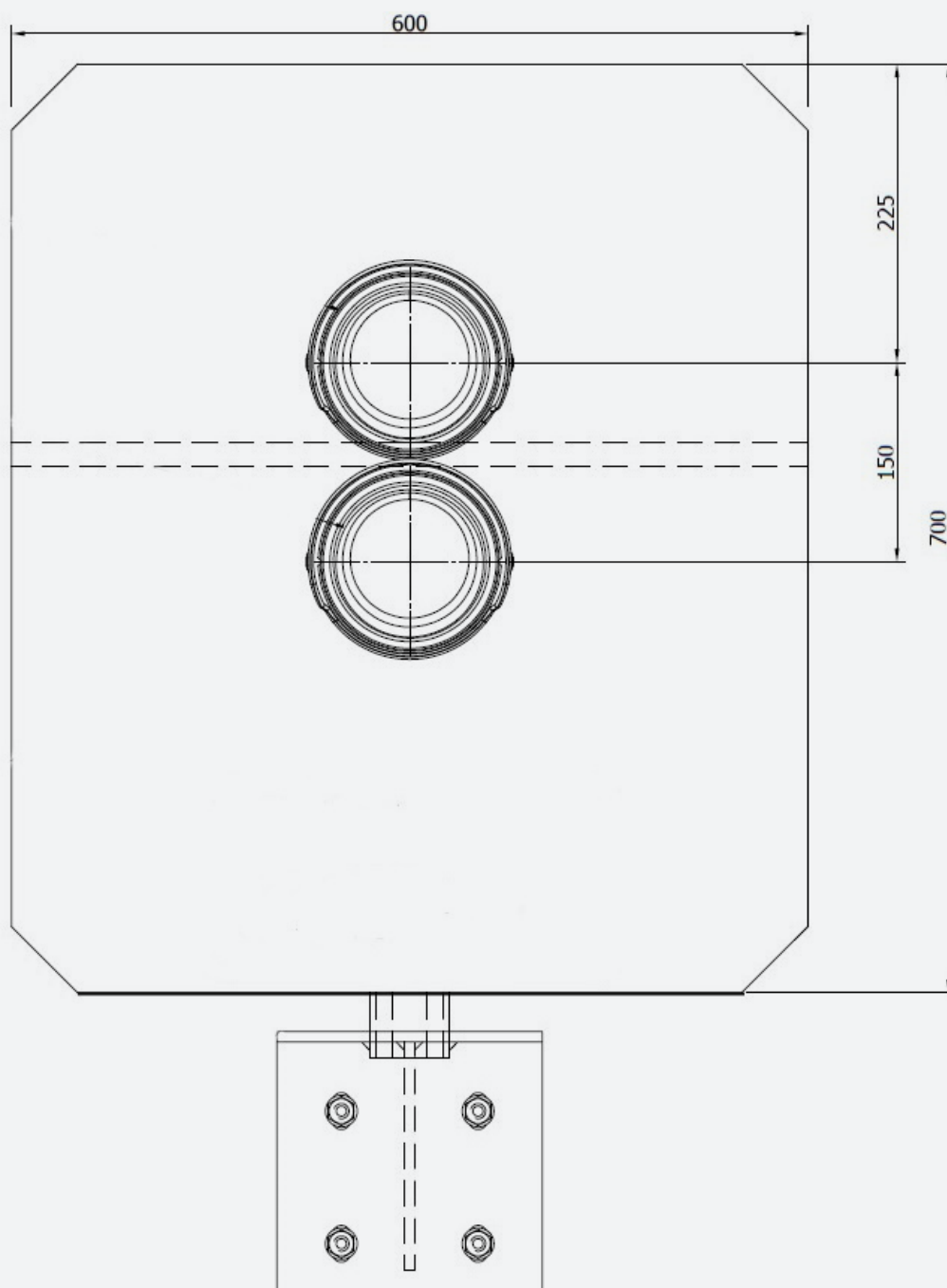
If a single aspect Indicator is required a module blanking plate is available.

Performance Characteristics

| | |
|---|--|
| Product Approval Certificate | PA05/02620 |
| Nominal Operating Voltage | 24Vdc Driver's Crossing Indicator |
| Operating Voltage Range | 18-31.2 Vdc |
| Nominal Operating Current | Red - 150 mA at 24Vdc White - 1900 mA at 24Vdc |
| Electrical Connector Type | Free Wired to 2BA Terminal Bar |
| Ingress Protection Rating | IP 65 |
| Operating Temperature Range | -25°C to +40°C |
| Readability | 100m |
| Viewable Angle | +/- 45° at 100m |
| Product Weight | Signal 17Kg Module only - 1.6Kg Interface Bracket 10Kg |
| For product instructions and dimensioned drawings please visit: | www.unipartdorman.co.uk |

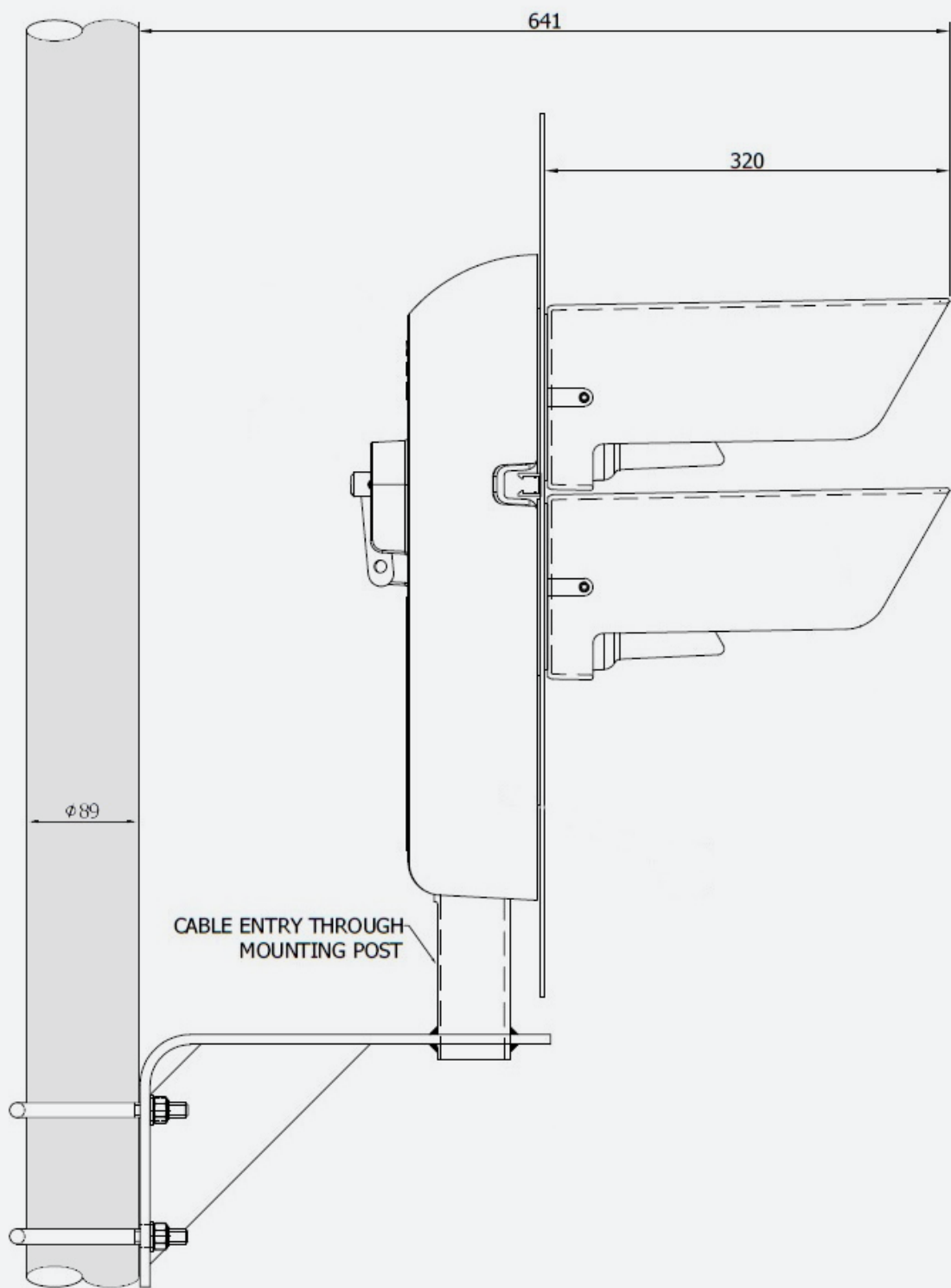
Product Configuration

24 Vdc



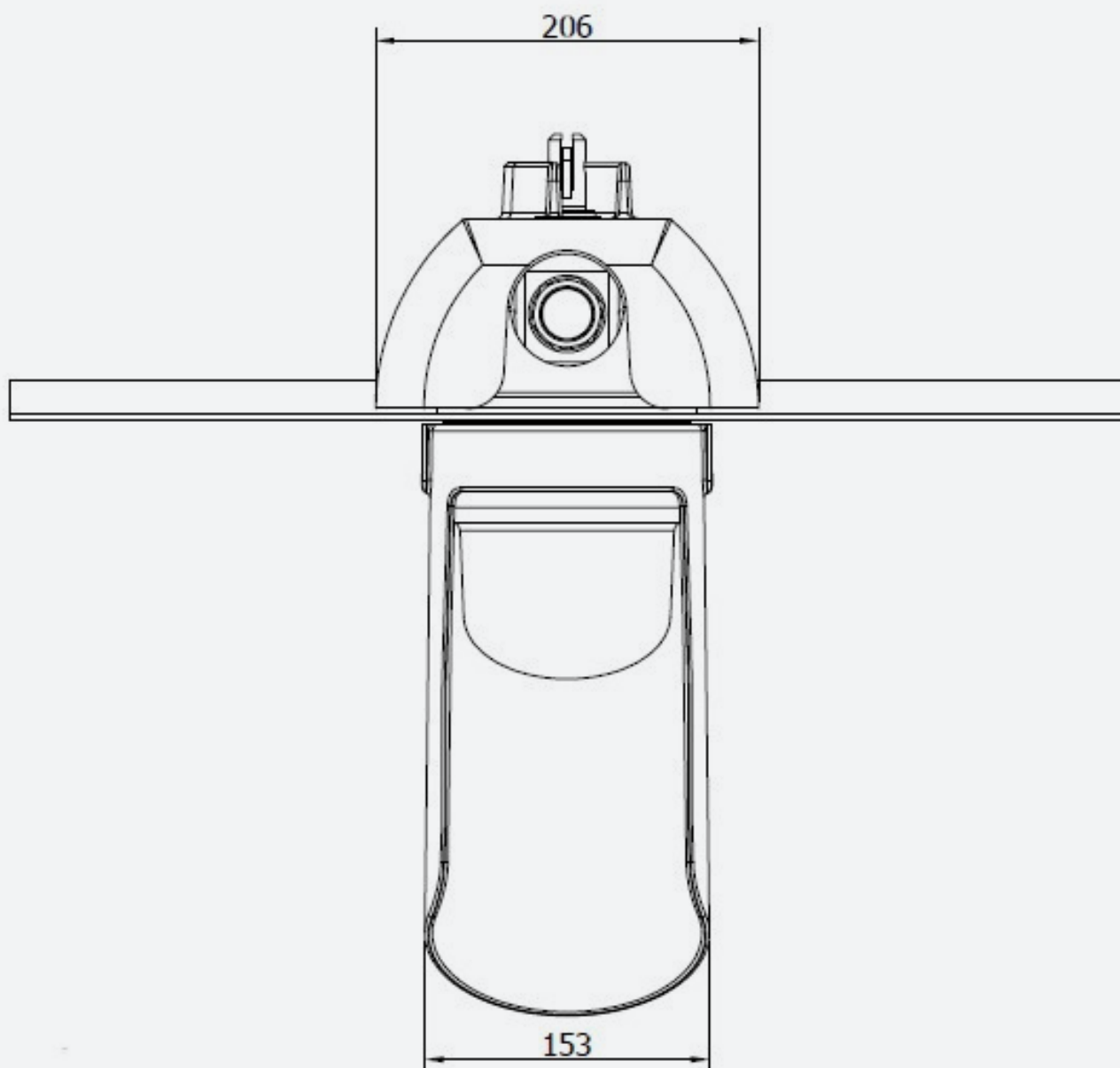
Product Configuration

24 Vdc

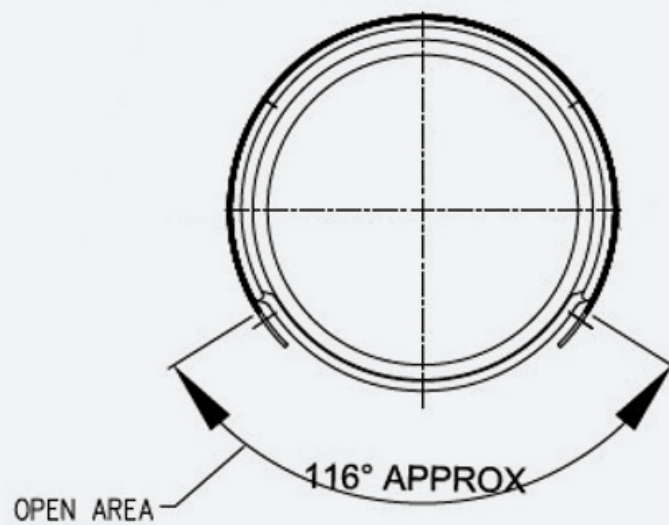
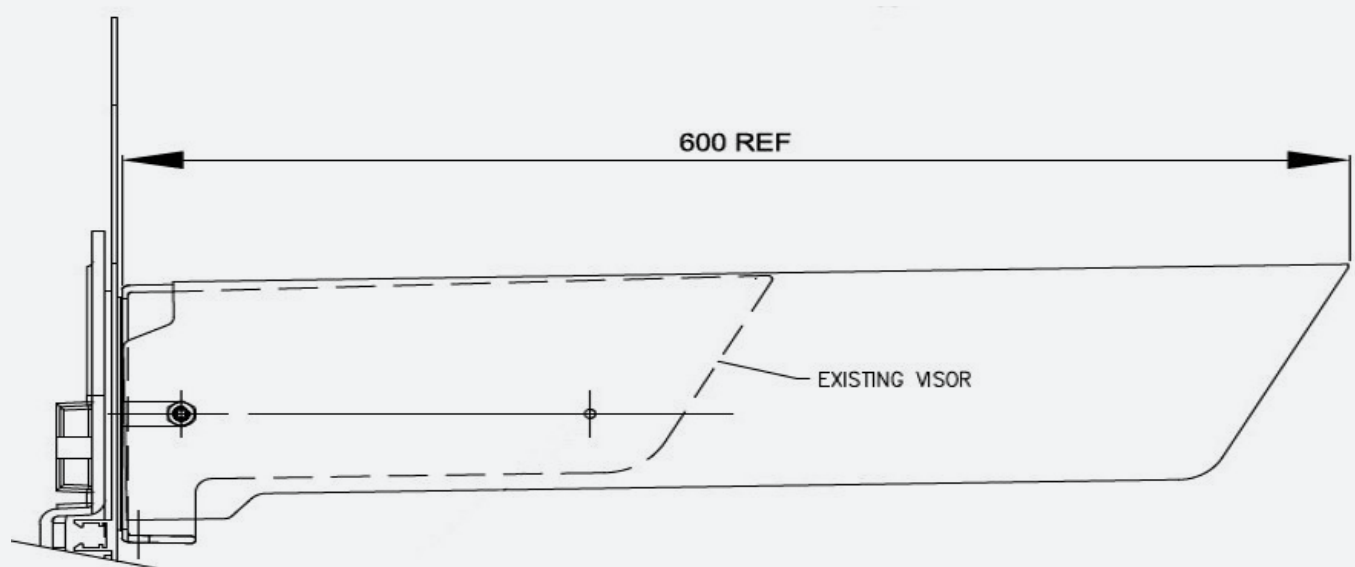


Product Configuration

24 Vdc

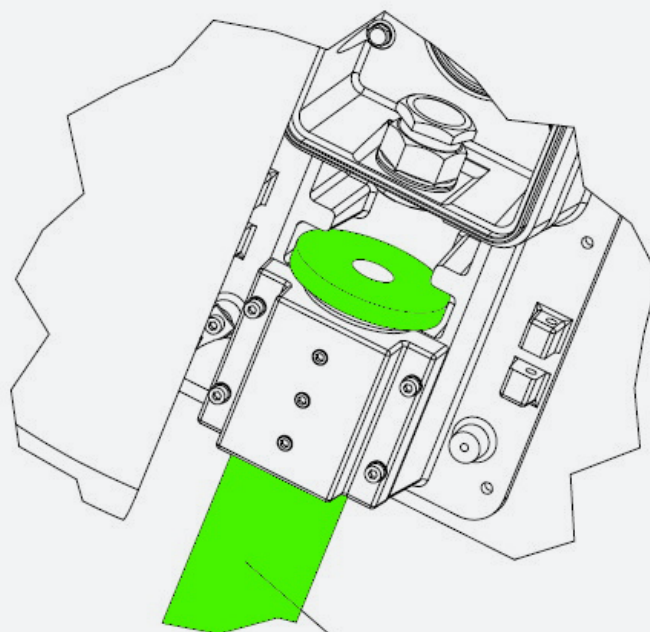
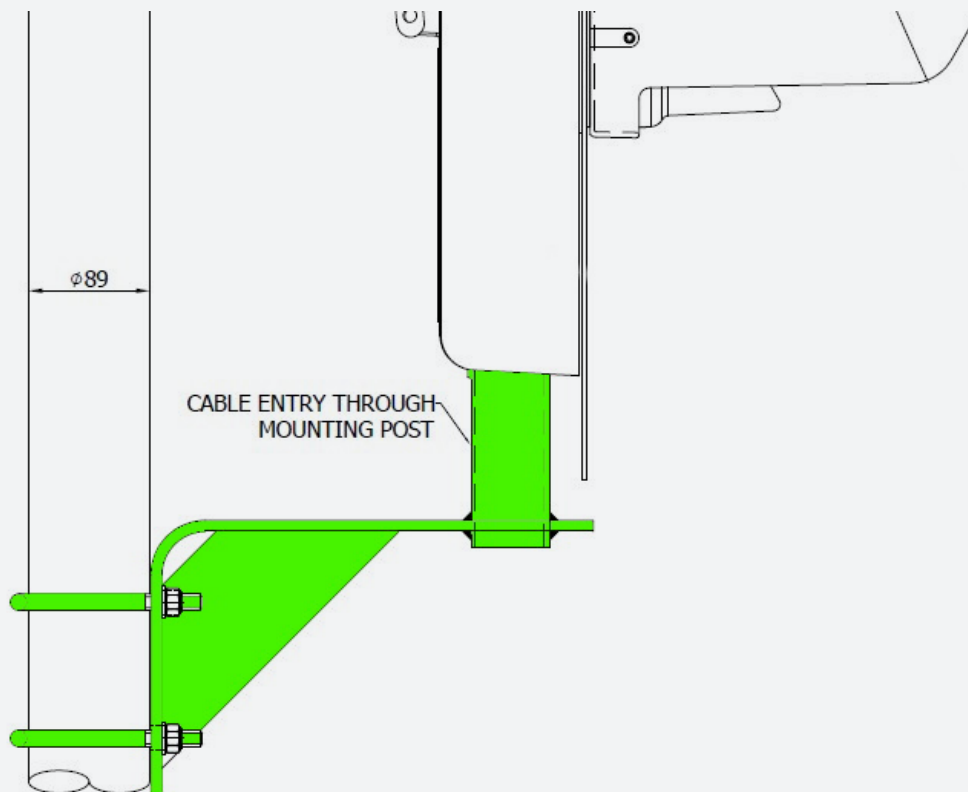


Product Configuration



EXTENDED VISOR SHOWN MOUNTED CENTRALLY
(CAN BE OFFSET TO THE LEFT OR RIGHT)

Product Configuration



MOUNTING POST($\phi 60.3\text{mm}$)
LOCATED ON INTERFACE BRACKET

DETAIL OF POST MOUNT & CLAMPING
ARRANGEMENT.
NOTE: THIS SECTION IS COVERED BY
CLOSURE OF THE HINGED DOOR FOR
ANTI-VANDAL PURPOSES.

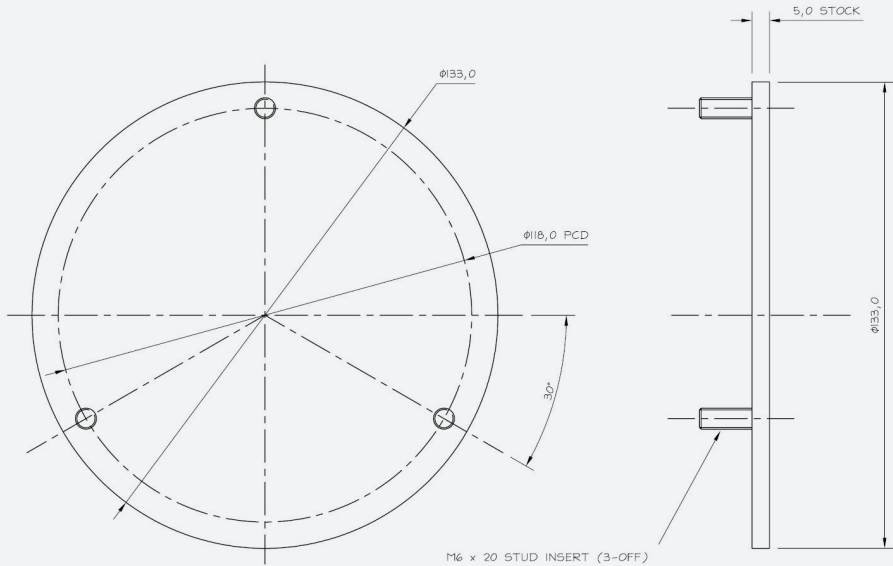
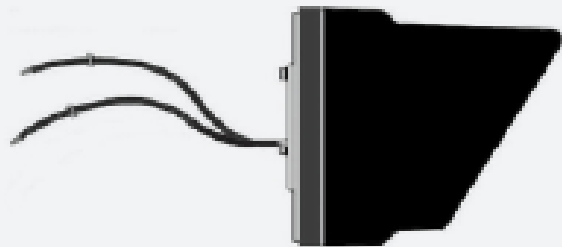
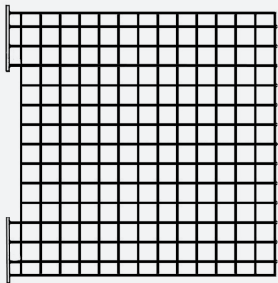
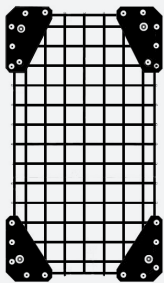
Catalogue Numbers

Signals

| Catalogue Number | Unipart Dorman Part Number | Description |
|------------------|----------------------------|-------------|
| 0088/02871 | DCIH1/RW/2/PN/O | DCI |

Spares

| Catalogue Number | Unipart Dorman Part Number | Description |
|------------------------|----------------------------|---|
| 0086/017722 | D81.80139 | Universal Visor Extension/ Obscuration Kit |
| Contact Unipart Dorman | SLM1/R-/2/N/O | 24V Signal Lamp Module Red |
| Contact Unipart Dorman | SLM2/W-/2/P/O | 24V Signal Lamp Module White (Internal Flash) |
| 0088/026985 | D81.80130 | Anti Vandal Guard |
| 0088/02872 | D82.81646 | Module Blanking Plate |



Contact us today to learn
how we can help your
business improve reliability,
efficiency and safety in
railway operations.



Click or scan
to contact us