



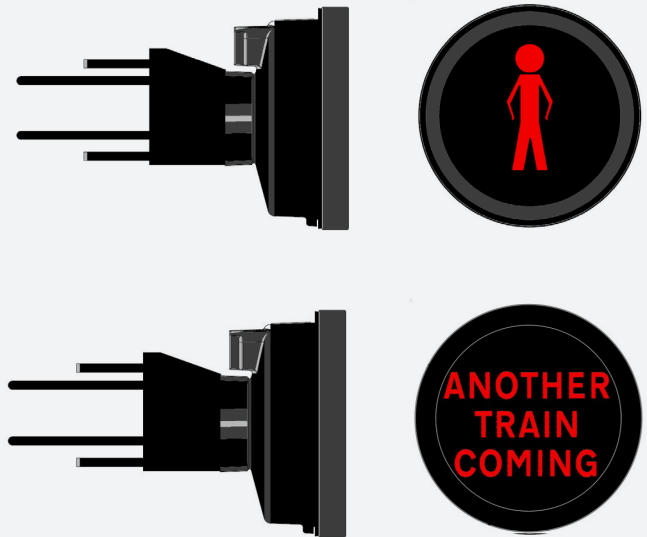
Performance in motion



Level Crossing Lights



Unipart Dorman Level Crossing Lights are Network Rail accepted products used primarily at level crossings to convey information to pedestrians and road users.



They are available in 24 Vdc and 110 Vac versions and have removable hoods. Where the hoods are not fitted, the overall projection of the light from the post is reduced by approximately 275mm.

Performance Characteristics - 24 Vdc

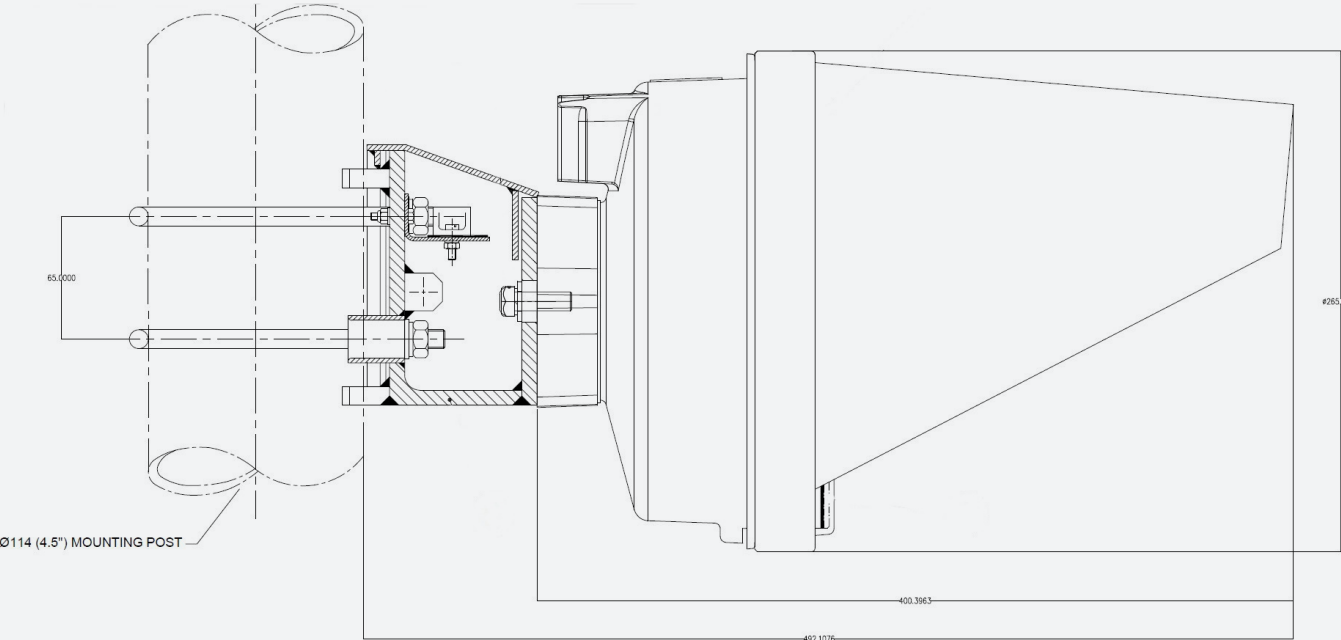
Product Approval Certificate	PA05/02900
Nominal Operating Voltage	24 Vdc
Operating Voltage Range	18-32 Vdc
Nominal Operating Current	900 mA per module
Electrical Connector Type	Free Wired to Terminal Bar or Plug Coupled
Ingress Protection Rating	IP 55
Operating Temperature Range	-25°C to +40°C
Viewable Angle	+/- 45° at 100m
Product Weight	Head only - 6.9Kg Module only - 4.4Kg
For product instructions and dimensioned drawings please visit:	www.unipartdorman.co.uk

Performance Characteristics - 110 Vac

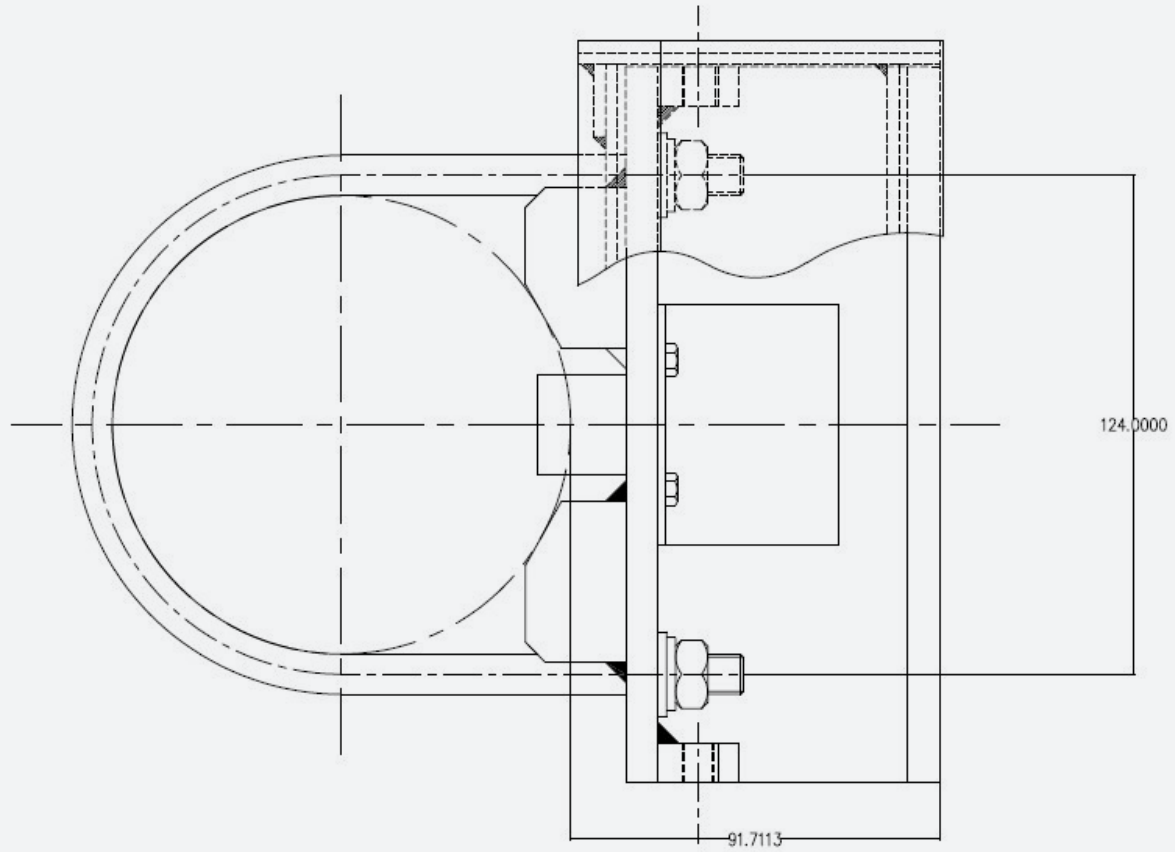
Product Approval Certificate	PA05/02900
Nominal Operating Voltage	110 Vdc
Operating Voltage Range	88-121 Vac
Nominal Operating Current	300 mA
Electrical Connector Type	Free Wired to 2BA Terminal Bar or Plug Coupled
Ingress Protection Rating	IP 55
Operating Temperature Range	-25°C to +40°C
Viewable Angle	+/- 45° at 100m
Product Weight	Head only - 6.9Kg Module only - 1.6Kg
For product instructions and dimensioned drawings please visit:	www.unipartdorman.co.uk



Product Configuration



Product Configuration



Catalogue Numbers

Order Detail (24Vdc)

Catalogue Number	Unipart Dorman Part Number	Description
086/000037	As per PADS No.	24V DC Free Wired LED Wig-Wag module 'Another Train Coming' complete assembly. Comprises: 1 x LED Wig-Wag Module – Red (086/023395), 1 x Mounting Bracket Assembly (086/024197) & 1 x 'Another Train Coming' mask and fixing kit (086/000038).
086/000038	D87.86023	LED Wig-Wag module 'Another Train Coming' mask and fixing kit.
086/024195	As Per PADS no.	24V DC Free Wired LED Wig-Wag module 'Standing Red Man' complete assembly. Comprises: 1 x LED Wig-Wag Module – Red (086/023395) 1 x Mounting Bracket Assembly (086/024197) & 1 x 'Standing Red Man' mask and fixing kit (086/024196).
086/024196	D87.86015	LED Wig-Wag module 'Standing Red Man' mask and fixing kit.
086/024197	D87.86017	Mounting Bracket Assembly for 24V DC free wired 'Standing Red Man' and 'Another Train Coming' LED module

Catalogue Numbers

Order Detail (110Vac)

Catalogue Number	Unipart Dorman Part Number	Description
086/024620	LWFSM/R/1/50/01	110V AC Free Wired LED Wig Wag module 'Standing Red Man' complete assembly. Comprises: 1 x 110V AC LED Wig- Wag Module – Red, 1 x Anti Vandal Mounting Bracket Assembly (0050/607671) & 1 x 'Standing Red Man' mask and fixing kit (086/024196)
086/024621	0050/607364	110V AC Plug Coupled LED Wig Wag module 'Standing Red Man' complete assembly. Comprises: 1 x LED Wig-Wag Module – Red Plug Coupled, 1 x Mounting Bracket Assembly (0050/607365) & 1 x 'Standing Red Man' mask and fixing kit (086/024196)

Another Train Coming Lights are not available in 110Vac.
If a 110Vac version is required, please contact Unipart Dorman.



Contact us today to learn
how we can help your
business improve reliability,
efficiency and safety in
railway operations.



Click or scan
to contact us