



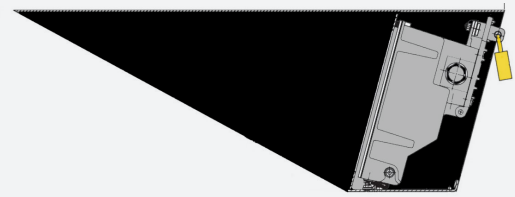
Performance in motion



# Miniature Alphanumeric Route Indicators



The MARI displays a white character on a black background to indicate the route or platform to be used.



Combinations of up to 3 characters in Sans Gill font can be specified and a standard order form which depicts the variations allowed is used to simplify the specifying and ordering process.

There are 3 product configurations available, single with standard visor, double sided and single with short visor.

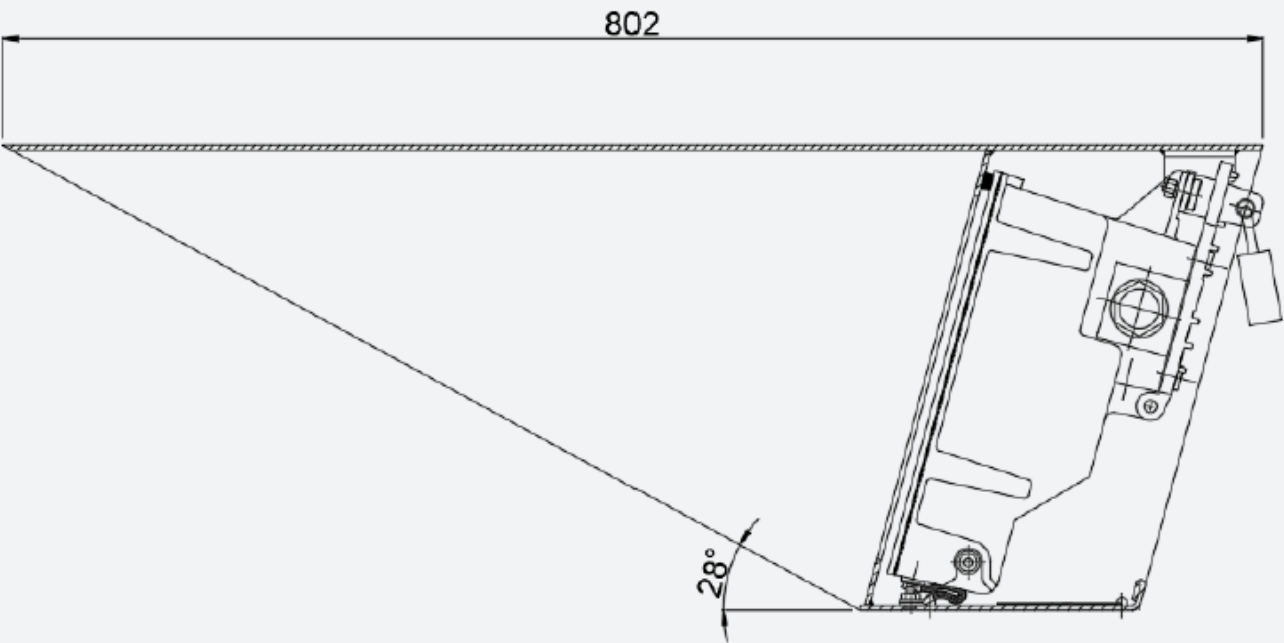
#### Performance Characteristics

Product Approval Certificate	PA05/01071
Nominal Operating Voltage	110 Vac or 120 Vdc
Operating Voltage Range PI & DDPI	88-121 V
Operating Voltage Range LSI	88-145 V
Nominal Operating Current	300 mA at 110Vac or 500mA at 110Vac (2 state only)
Electrical Connector Type	Free Wired to 2BA Terminal Bar
Ingress Protection Rating	IP 65
Operating Temperature Range	-25°C to +40°C
Readability	65m
Viewable Angle	+/- 45° at 100m
Product Weight	14 Kg single sided, 27Kg double sided
For product instructions and dimensioned drawings please visit:	<a href="http://www.unipartdorman.co.uk">www.unipartdorman.co.uk</a>

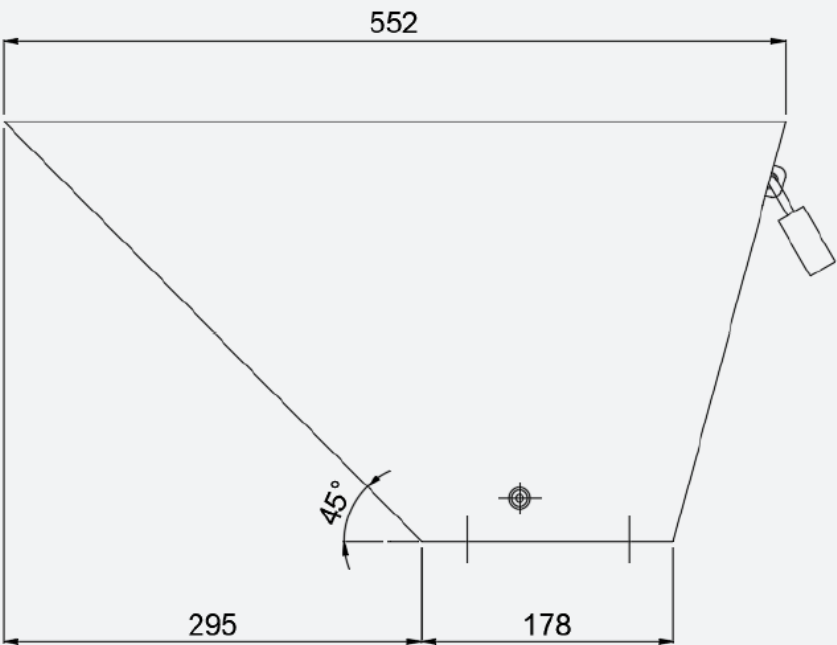


# Product Configuration

Single Side, Standard Visor

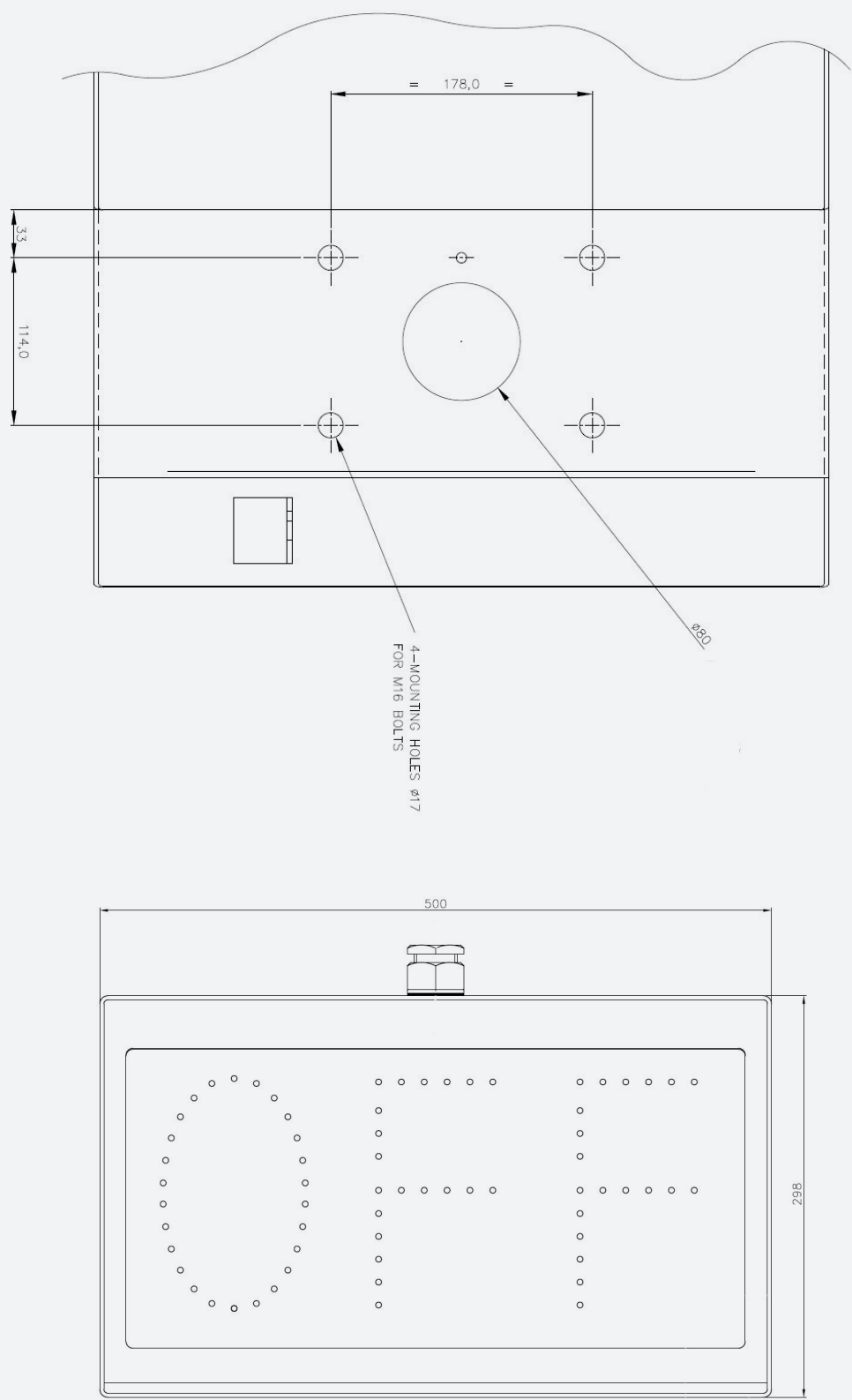


Single Side, Short Visor – Not Preferred



# Product Configuration

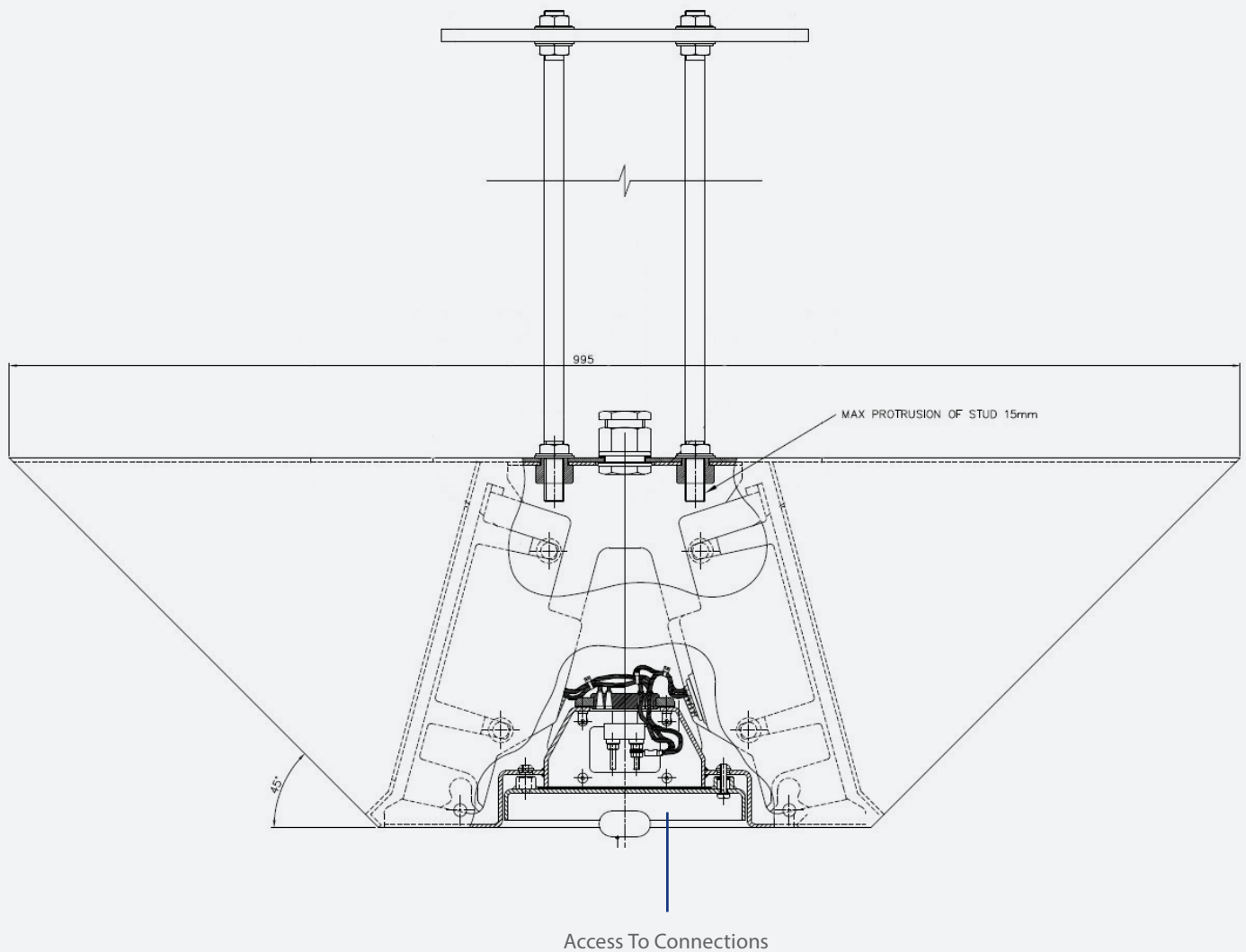
## Indicator Base and Display (Standard and Short Visor)



## Product Configuration

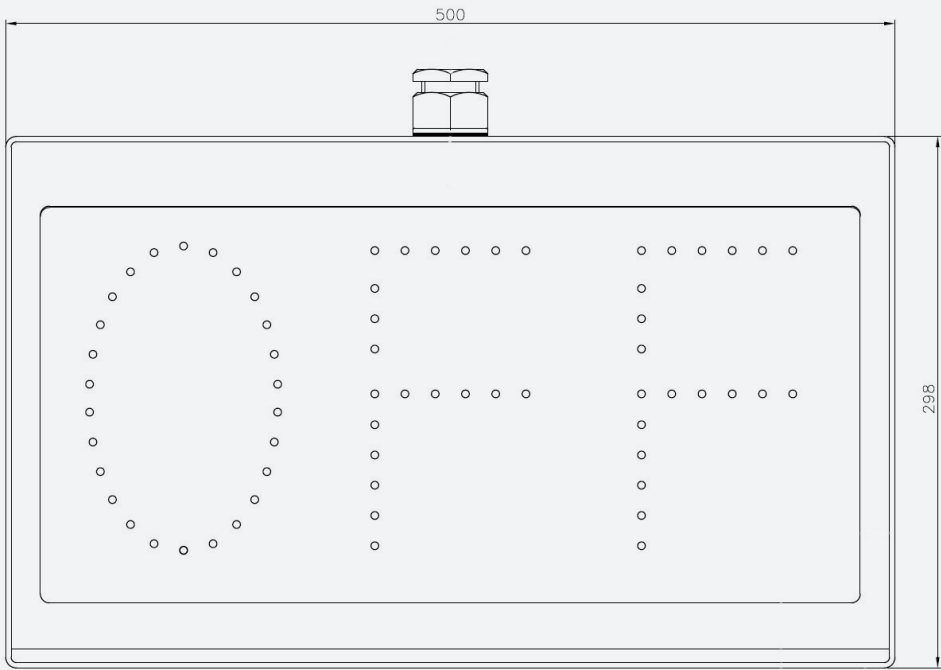
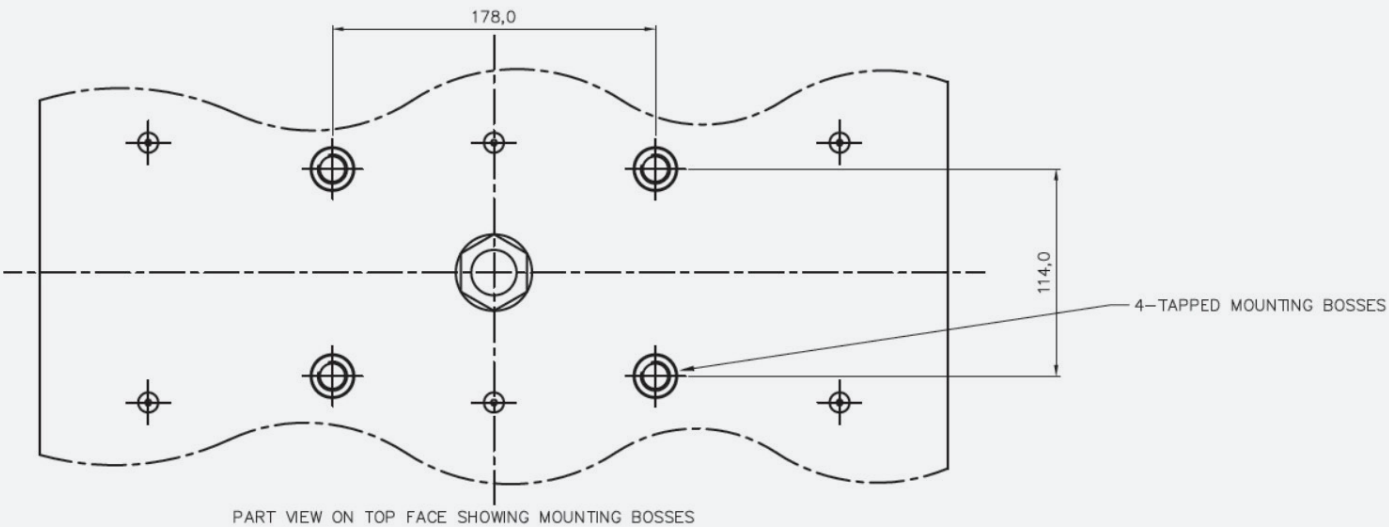
### Double Sided

Indicator designed to be suspended below platform canopies etc., from 4x lengths of M16 stud (not supplied by Unipart Dorman) cut to the site specific length required.



# Product Configuration

Double Sided



## Order Detail

Each MARI is a bespoke manufacture and the special to type order form should be obtained from Unipart Rail and completed to ensure the correct indications are specified.

Throughout the order, manufacture and installation process an alphanumeric format is used to standardise PCB design, ordering, manufacture and signal circuit design.

The examples below show the limits on character allocation and show each distinct indication separated using a colon :

Order Received	Alphanumeric Form	Order Form Example
A, 1, 2, B	A:B:1:2	<div><div>A</div><div>B</div><div>1</div><div>2</div></div>
DF, 14, DS	DF:DS:14	<div><div>DF</div><div>DS</div><div>14</div></div>
SG2, SG1	SG1:SG2	<div><div>SG1</div><div>SG2</div></div>

Orders should be placed in and the final sequence of indications and their termination numbering shall follow the rule: Alphabetical (A to Z); then, Numerical (0 to 9); then, Alphanumeric (A1 to Z9) Numericalphabetical (1A to 9Z)

Once Manufacturing Has Started the Display Configuration CANNOT Be Changed



## Ordering

The MARI is capable of showing a combination of up to 3 characters on each display with the following guidelines:

- S/A:B:3:4---/1S            4x single character indications (3x on a Double Sided Indicator)
- S/DF:DS:UM--/1S           3x two character indications
- S/SG1:SG2---/1S           2x three character indications

The above limits are for guidance only and customers should contact Unipart Dorman to discuss more complex combinations.

Catalogue Number	Unipart Dorman Part Number	Description
0086/021020	S/SPECIAL1IND/1S	MARI Displaying 1 Indication
0086/021020	S/SPECIAL2IND/1S	MARI Displaying 2 Indications
0086/021020	S/SPECIAL3IND/1S	MARI Displaying 3 Indications
0086/021020	S/SPECIAL4IND/1S	MARI Displaying 4 Indications
0086/021021	Contact Unipart Dorman	Double sided MARI
0086/021022	S/RA-----/1S	‘RA’ Platform Indicator
0086/021023	S/OFF-----/1S	‘OFF’ Platform Indicator
0086/021024	S/CD-----/1S	‘CD’ Platform Indicator
0086/021025	S/CD:RA-----/1S	Combined ‘CD/RA’ Platform Indicator



## Ordering (Short Visor Version)

The short visor version of the MARI is a ‘not preferred item’ with Network Rail although it holds a full product acceptance. It is mainly for use in depots etc and users should be aware that under certain conditions there will be a bar of reflected sunlight across the bottom quarter of the screen which can be a slight distraction to drivers. It is only used on the instruction of the Signal Sighting Chair via the Signal Sighting Form process.

Catalogue Number	Unipart Dorman Part Number	Description
0086/021086	A/SPECIAL1IND/1S	MARI Displaying 1 Indication
0086/021086	A/SPECIAL2IND/1S	MARI Displaying 2 Indications
0086/021086	A/SPECIAL3IND/1S	MARI Displaying 3 Indications
0086/021086	A/SPECIAL4IND/1S	MARI Displaying 4 Indications
0086/021087	A/RA-----/1S	‘RA’ Platform Indicator
0086/021088	A/OFF-----/1S	‘OFF’ Platform Indicator
0086/021089	A/CD-----/1S	‘CD’ Platform Indicator
0086/021090	A/CD:RA-----/1S	Combined ‘CD/RA’ Platform Indicator

Not Preferred



# Ordering Double Sided Indicators

The MARI is capable of showing a combination of up to 3 characters on each display face.

It should be noted that the Double Sided is only available configured to show 2 separate indications on each side.

Catalogue Number	Unipart Dorman Part Number	Description
0086/021021	Contact Unipart Dorman	Double sided MARI

## Ordering Spare Modules and Enclosures

Catalogue Number	Unipart Dorman Part Number	Description
0086/021091	R/SPECIAL1IND/1S	MARI Module (1 Indication)
0086/021091	R/SPECIAL2IND/1S	MARI Module (2 Indication)
0086/021091	R/SPECIAL3IND/1S	MARI Module (3 Indication)
0086/021091	R/SPECIAL4IND/1S	MARI Module (4 Indication)
0086/021093	R/CD-----/1S	CD Module
0086/021094	R/RA-----/1S	RA Module
0086/021095	R/CD+RA-----/1S	CD:RA Module
0086/021092	R/OFF-----/1S	OFF Module
0086/021096	B20.19448	Short Hood MARI Enclosure
0086/021097	B20.19097	Long Hood MARI Enclosure

Contact us today to learn how we can help your business improve reliability, efficiency and safety in railway operations.



Click or scan  
to contact us