



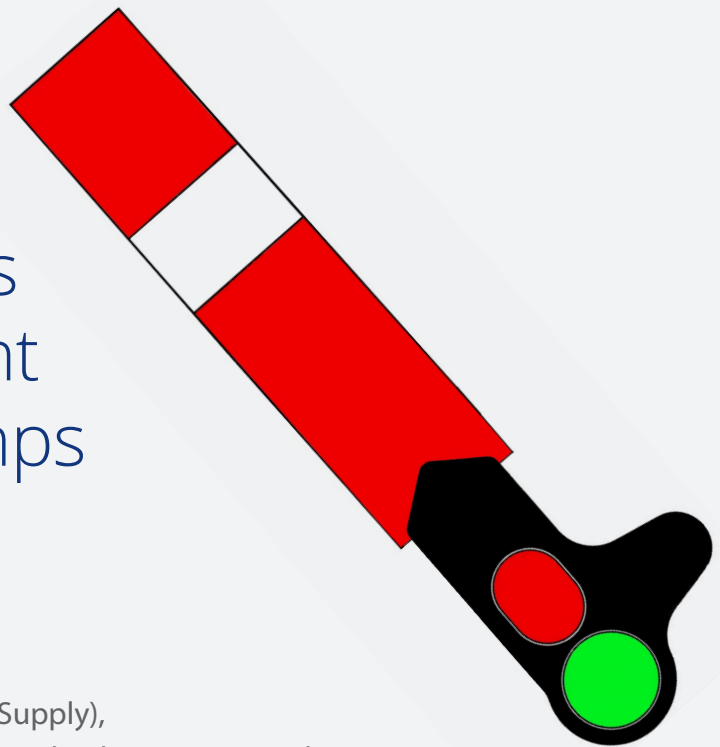
Performance in motion



Semaphore Signal Lighting



The Universal Semaphore Lamp is a direct replacement unit for existing lamps and housings.



It is supplied in 12Vdc High Intensity (External Supply), 6Vdc Standard Intensity (External Supply), 6Vdc Subsidiary/Disc Signal with a 50mm aperture (External Supply) and 6Vdc Subsidiary/Disc Signal with a 50mm aperture (Supplied by Internal Batteries).

The USL comes as standard with both short and tall bases to enable fitting and these bases are drilled at site to meet the existing mounting bolt distances.

Additionally USL can be fitted with a Red Filter Kit which allows the lamp to be used for Buffer Stop Lamps, Gate Lamps and as a Red or White Swing Bridge Lamp (NOT to be used as a Red/Green Navigation Lamp)

Lamp Proving of the USL is facilitated by the use of a proving relay feed and there is an optical 'Lamp Lit' indication provided on the back of the unit which uses light gathered from the lamp when lit to illuminate a rear sighting lens.

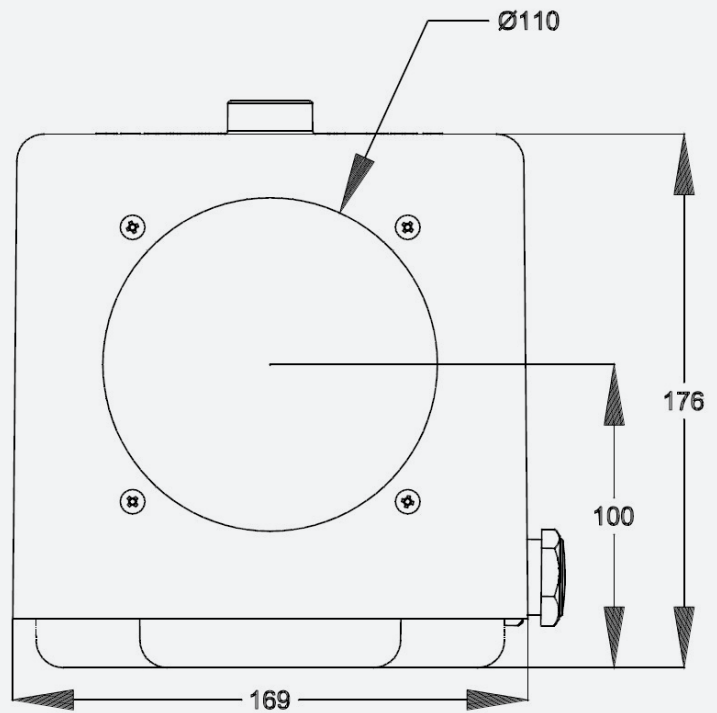
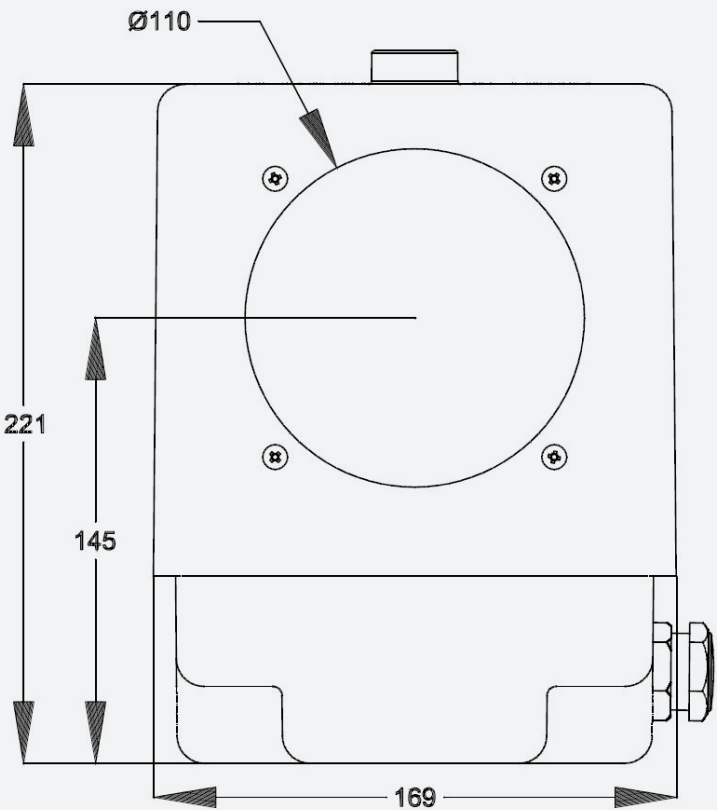
Connection of the external supply versions of the lamp is by 2BA terminal bar and lamps are supplied with a cable gland and a stopping plug to enable the supply cable (18mm max diameter) to be fed in to the unit from either side.



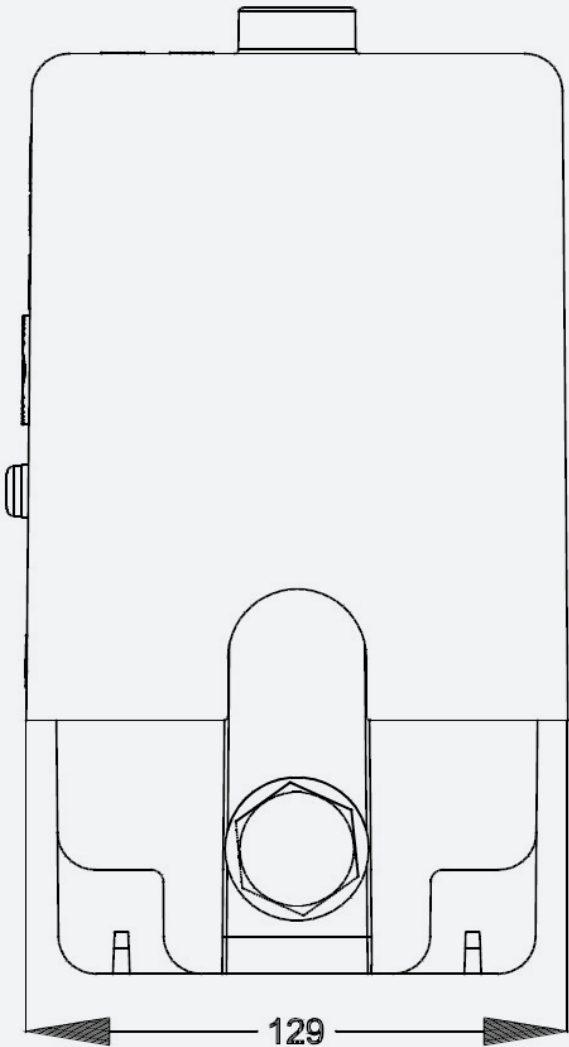
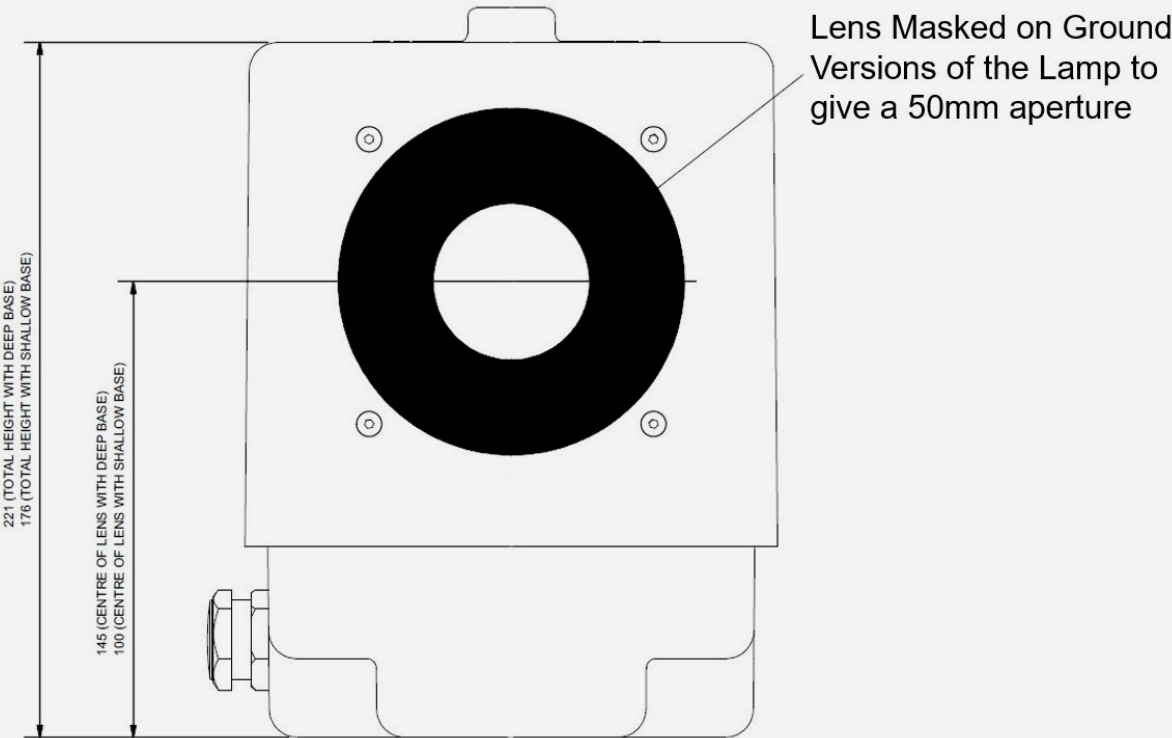
Performance Characteristics

Product Approval Certificate	PA05/03335
Nominal Operating Voltage	12 Vdc (High Intensity, 6Vdc Standard Intensity)
Operating Voltage Range	4 -18 Vdc
Nominal Operating Current	35 mA
Proving Voltage Range	2Vdc Min – 30Vdc Max
Proving Current	100mA Max
Electrical Connector Type	Free Wired to 2BA Terminal Bar
Ingress Protection Rating	IP 54
Operating Temperature Range	-25°C to +40°C
Product Weight	2 Kg
For product instructions and dimensioned drawings please visit:	www.unipartdorman.co.uk





Illustrations show tall and short base versions



Ordering

Signals

Catalogue Number	Unipart Dorman Part Number	Description
0086/009197	USL2/WW/P/B-/LG	Low Intensity USL - Ground (Internal Batteries)
0086/009196	USL2/WW/P/E-/HE	High Intensity USL – Elevated
0086/009195	USL2/WW/P/E-/LE	Low Intensity USL – Elevated Signals
0086/009198	USL2/WW/P/E-/LG	Low Intensity USL – Ground Signals (50mm Aperture)

Catalogue Number	Unipart Dorman Part Number	Description
0086/009199	D79.78027	USL - Red Lens Conversion Kit

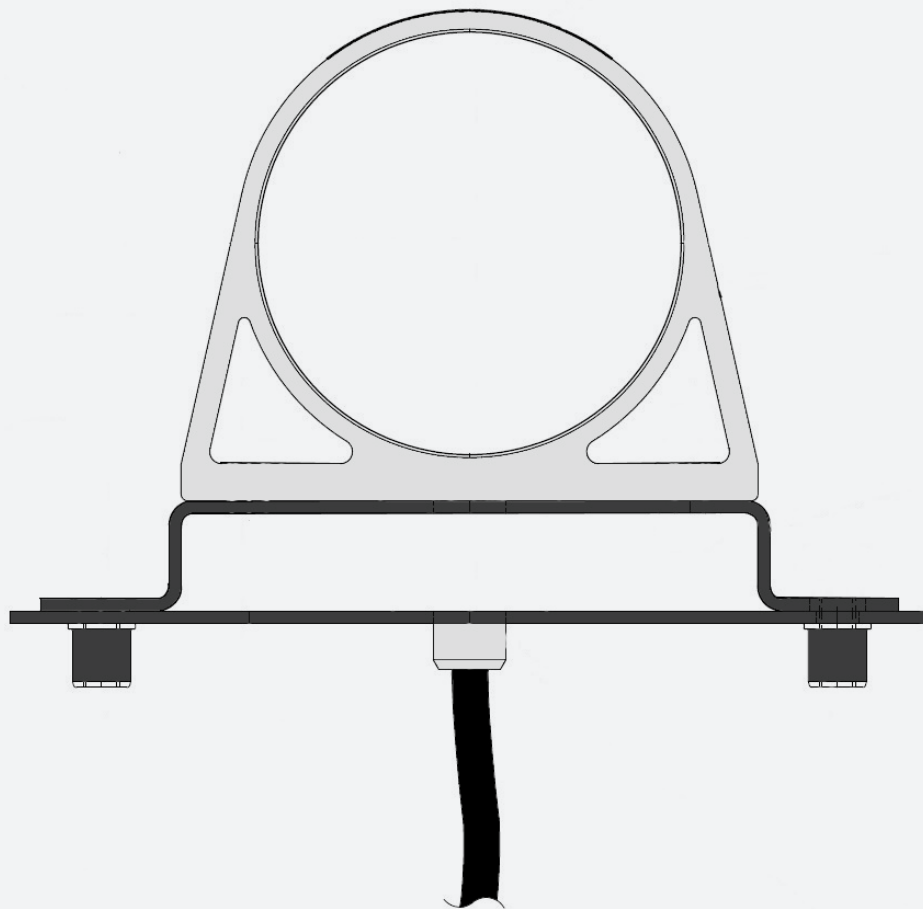
Semaphore Replacement Module

The Semaphore Replacement Module (SRM) is designed to be a direct replacement unit for existing electric or paraffin existing lamps and utilises the existing housing.

The SRM comes in three variants to fit either an Adlake 55/13 Lamp Housing, a Pre 1982 WR/GWR 8" Lamp Housing or a Post 1982 WR/GWR 8" Lamp Housing and they are secured in the case with a magnet and an eccentric cam. The height and alignment of the beam is adjustable to centre it in the concentrator lens.

Lamp Proving of the USL is facilitated by the use of a proving relay feed and there is an optical 'Lamp Lit' indication provided on the back of the unit which uses light gathered from the lamp when lit to illuminate a rear sighting lens.

The lamps have a 1m tail cable and final termination is carried out at site.

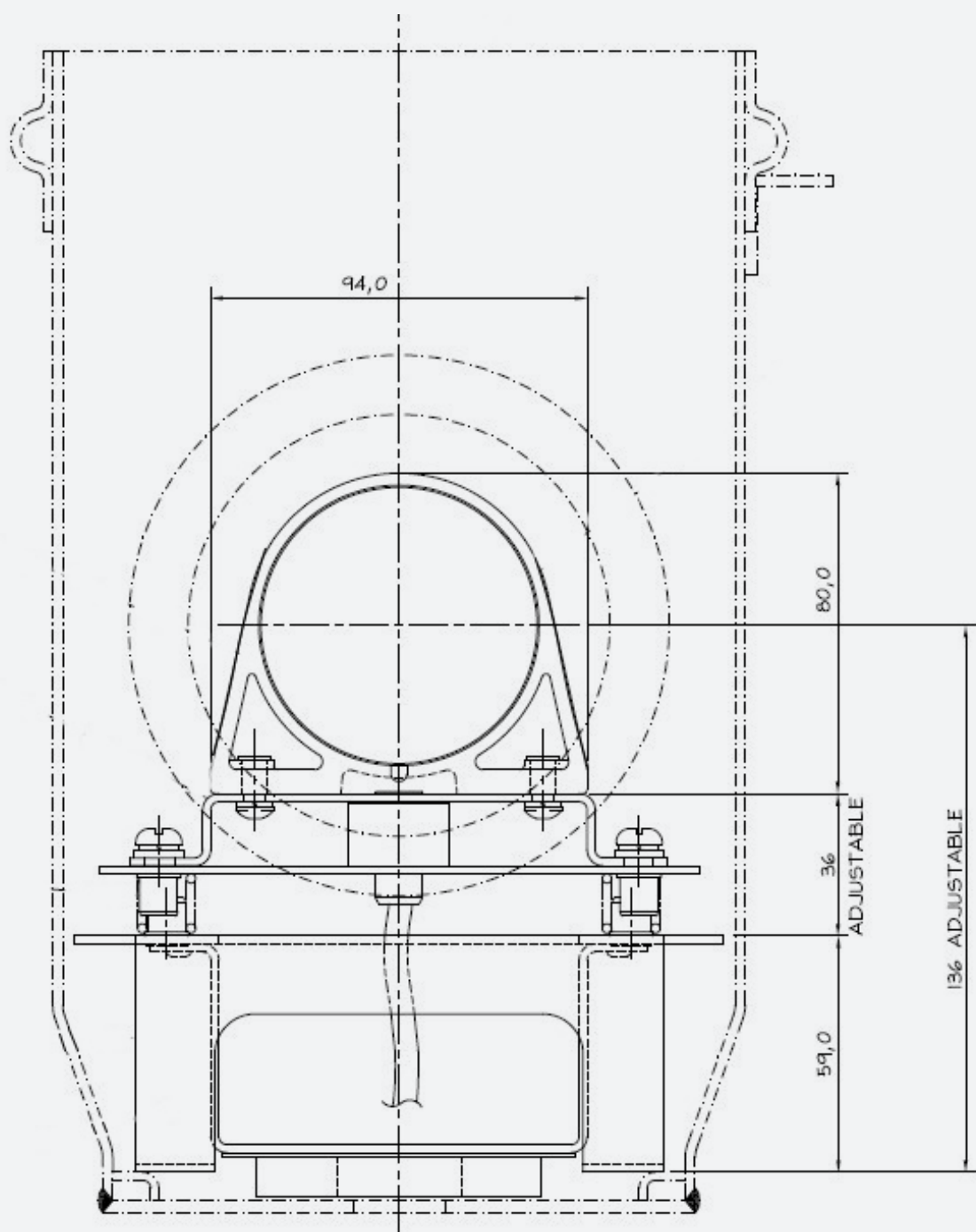


The SRM is no longer the Network Rail preferred item and where possible, existing lamps and cases should be replaced with a Universal Semaphore Lamp

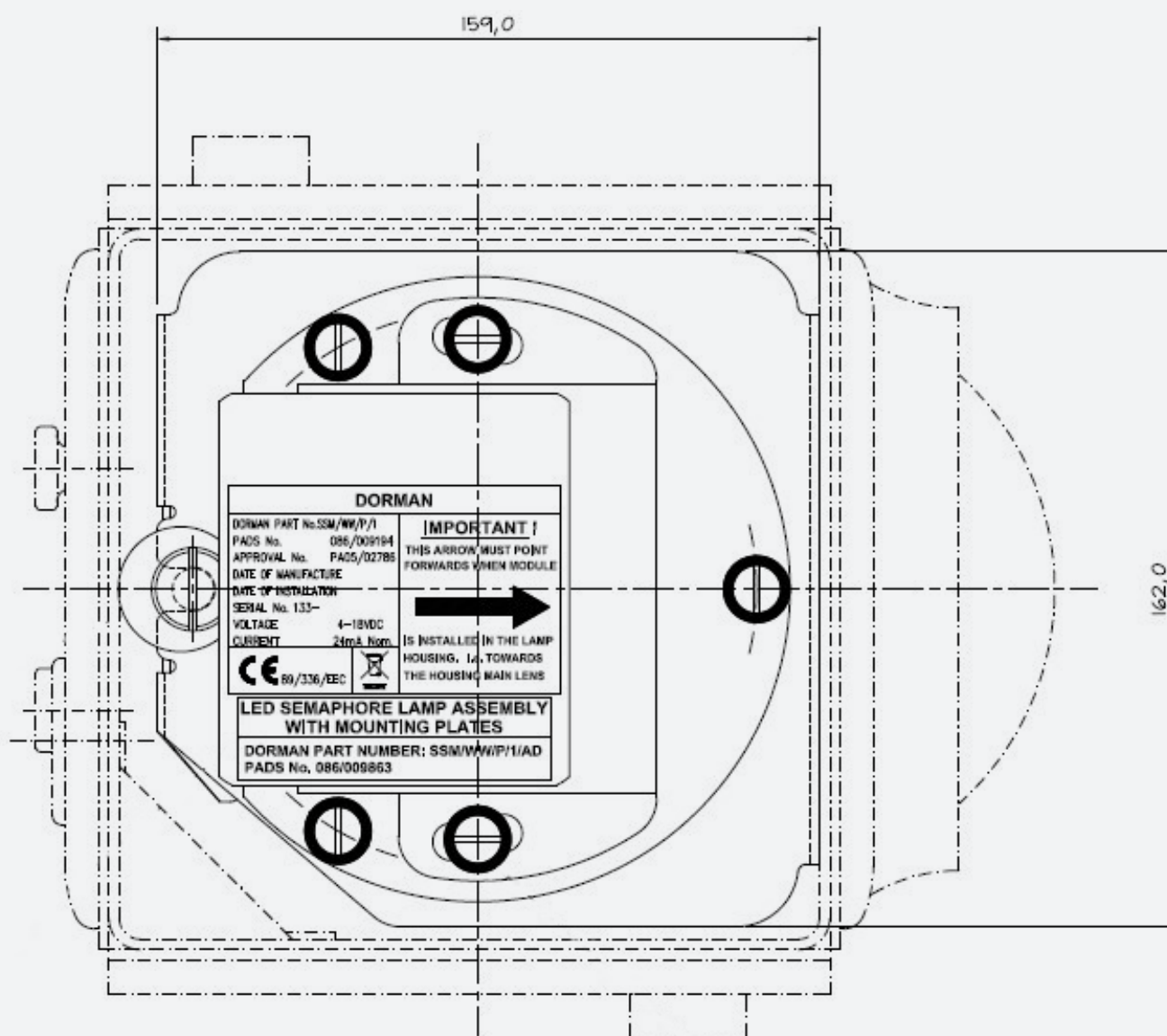
Performance Characteristics

Product Approval Certificate	PA05/2786
Operating Voltage Range	4 -18 Vdc
Nominal Operating Current	24 mA
Proving Voltage Range	2Vdc Min – 30Vdc Max
Proving Current	100mA Max
Electrical Connector Type	1m cable to be terminated at site
Ingress Protection Rating	IP 54
Operating Temperature Range	-25°C to +40°C
Product Weight	2 Kg
For product instructions and dimensioned drawings please visit:	www.unipartdorman.co.uk

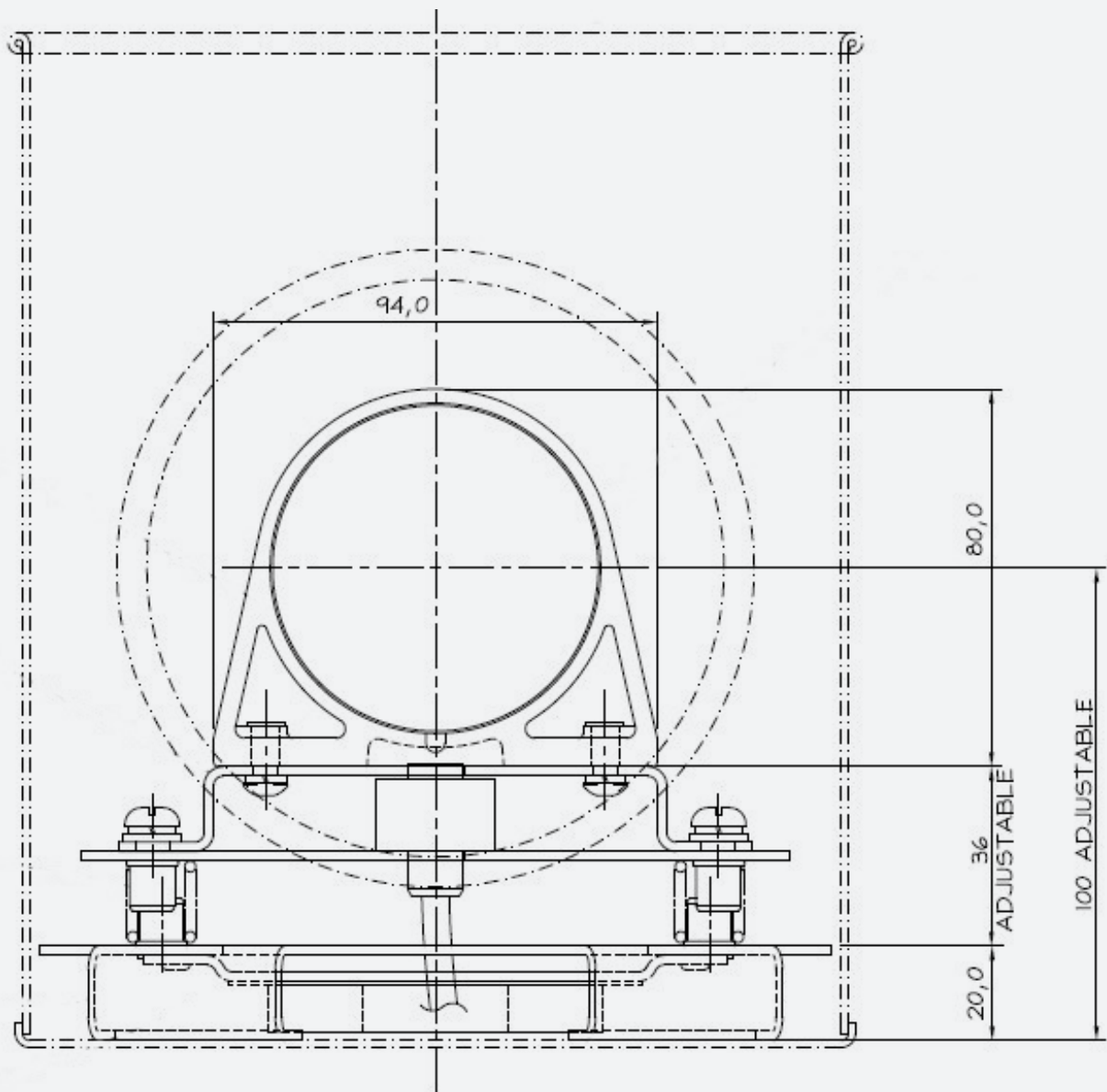
Adlake Module



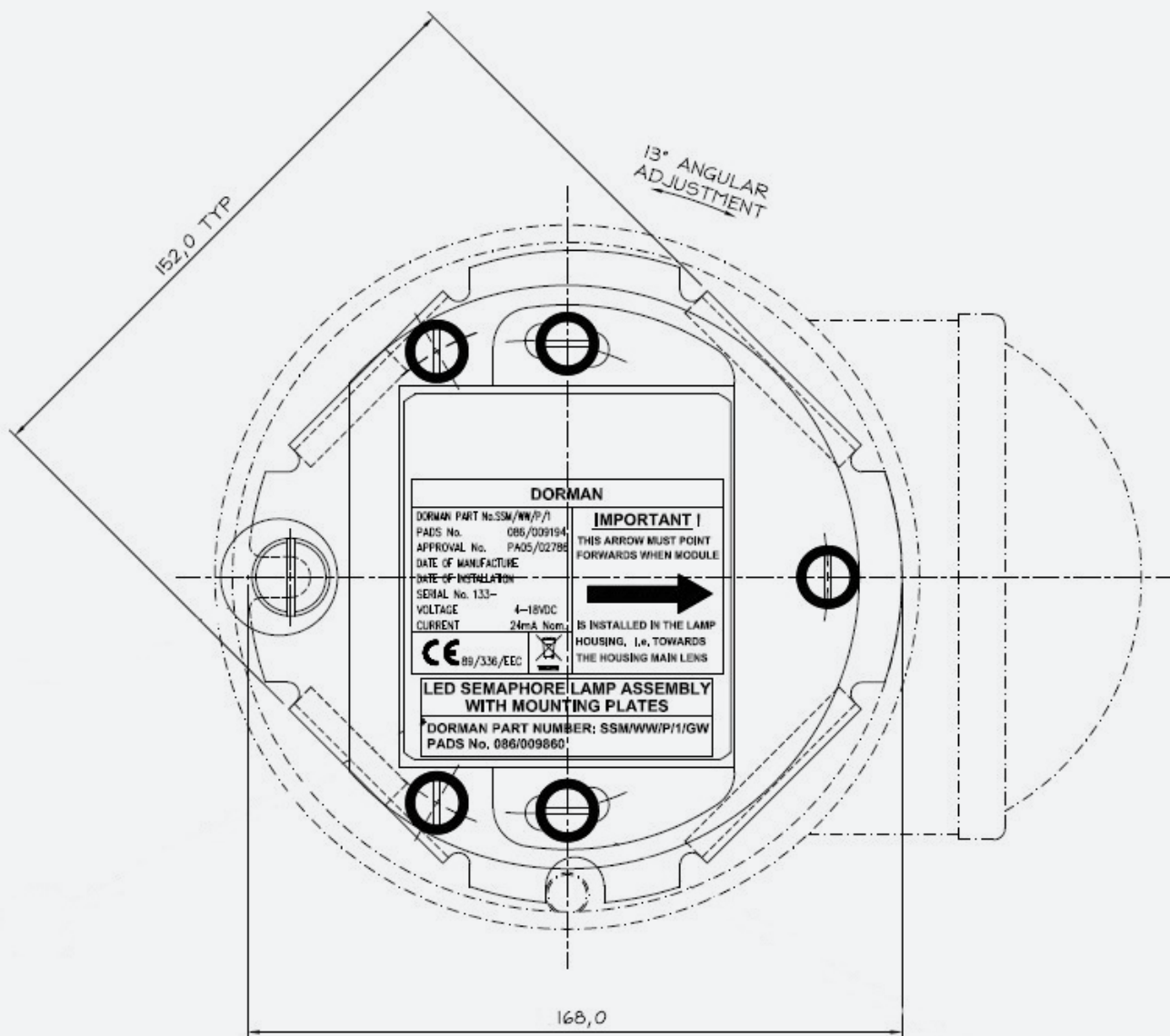
Adlake Module



GWR Module (Pre and Post 1982 Design)



GWR Module (Pre and Post 1982 Design)



Ordering

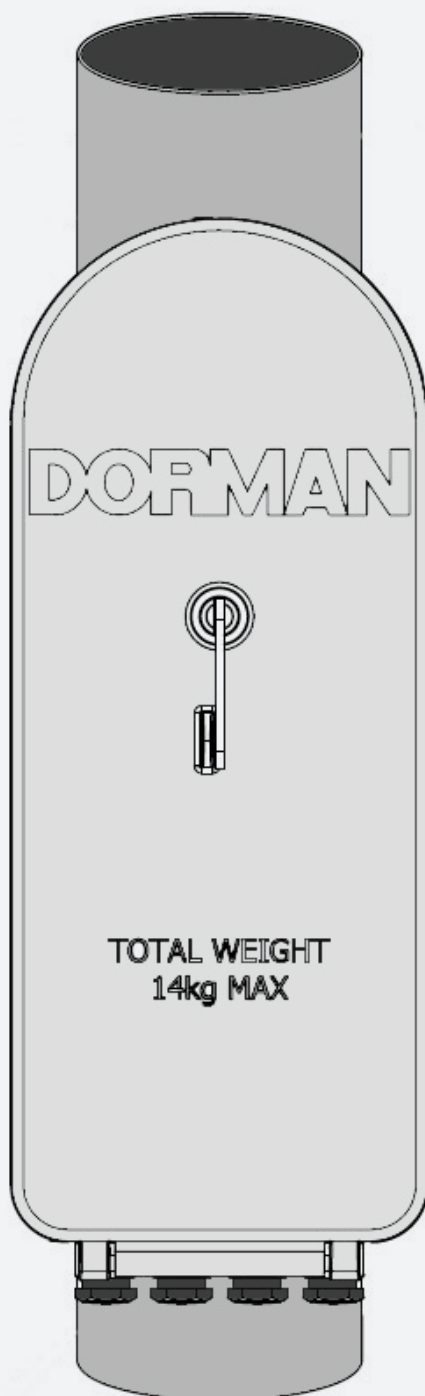
Catalogue Number	Unipart Dorman Part Number	Description
0086/009863	SSM/WW/P/1/AD	Semaphore Replacement Module for Adlake 55/13 Lamp Housing
0086/009860	SSM/WW/P/1/GW	Semaphore Replacement Module for Pre 1982 WR/GWR 8" Lamp Housing
0086/009861	SSM/WW/P/1/SA	Semaphore Replacement Module for Post 1982 WR/GWR 8" Lamp Housing
0086/009194	SSM/WW/P/1	LED Semaphore Lamp Assembly (excluding mounting plate)



Semaphore Battery Box

The Semaphore Battery Box (SBB) is designed to be used on standalone signals which use the 6Vdc Standard Intensity USL. It contains 4 Air Alkaline Batteries in 2 separate enclosures which are connected to the infrastructure using a 2BA terminal bar.

The SBB can power 2 USL for up to 3 months depending on ambient temperatures. It is attached to any standard pole using adjustable stainless steel banding or can be drilled for bulkhead/wall mounting.



Performance Characteristics

Product Approval Certificate	PA05/03100
Electrical Connector Type	Free Wired to 2BA Terminal Bar
Ingress Protection Rating	IP 54
Product Weight	14 Kg (with 4 batteries installed)
For product instructions and dimensioned drawings please visit:	www.unipartdorman.co.uk

Ordering

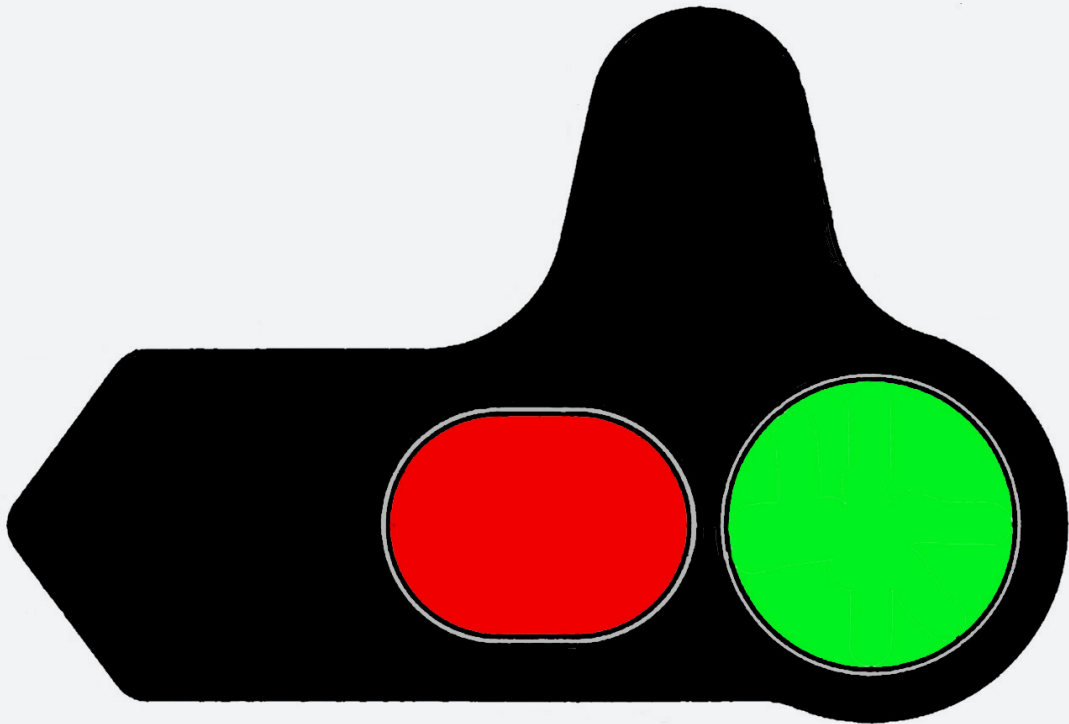
Catalogue Number	Unipart Dorman Part Number	Description
0086/009190	SSM/WW/BB	Semaphore Battery Box
0054/128366	B13.12170	50Ah Air Alkaline Battery (Order 12 per box)



The Unipart Dorman Semaphore Spectacle Filters are manufactured from 3mm Polycarbonate with a Peerless Hardcoat which protects against UV and abrasion damage.

Each colour – red, yellow and green – are true signal colours without any colour correction factors applied to compensate for light output. There are a number of standard shapes/colours for specific applications and there are also red, yellow and green ‘blanks’ which are used to manufacture spectacle filters to customer defined dimensions.

Unipart Dorman Spectacle Filters Are Only To Be Used On Electrically Lit Signals.



Performance Characteristics

Product Approval Certificate	PA05/03100
Colour Specification	Red, Yellow and Green colours comply with BS 1376 and BS 820
For product instructions and dimensioned drawings please visit:	www.unipartdorman.co.uk

Ordering

Catalogue Number	Unipart Dorman Part Number	Description
0086/009026	B79.78017	Oval Red 229 x 171mm to BRS-SM 28/1
0086/009027	B79.78018	Oval Yellow 229 x 171mm to BRS-SM 28/2
0086/009028	B79.78019	Round Green 222mm ø to BRS-SM 28/3
0086/009029	B79.78020	Oval Red 205 x 124mm to BRS-SM 28/4
0086/009030	B79.78021	Oval Yellow 205 x 124mm to BRS-SM 28/5
0086/009031	B79.78022	Round Green 162mm ø to BRS-SM 28/6
0086/009036	B79.78024	Round Red 63.5mm ø for 2 1/2 inch Spectacle
0086/009032	B79.78025	Round Red 174mm for 6 7/8 inch GWR170 Casting
0086/009035	B79.78026	Round Yellow 63.5mm ø for 2 1/2 inch Spectacle
0086/009034	B79.78027	Round Red 55.5mm for 2 3/16 inch spectacle
0086/009033	B79.78029	Round Yellow 174mm for 6 7/8 inch GWR170 Casting

Catalogue Number	Unipart Dorman Part Number	Description
0086/009037	B79.78031	Customer Defined Dimensions in Red
0086/009038	B79.78032	Customer Defined Dimensions in Yellow
0086/009039	B79.78033	Customer Defined Dimensions in Green



Contact us today to learn
how we can help your
business improve reliability,
efficiency and safety in
railway operations.



Click or scan
to contact us