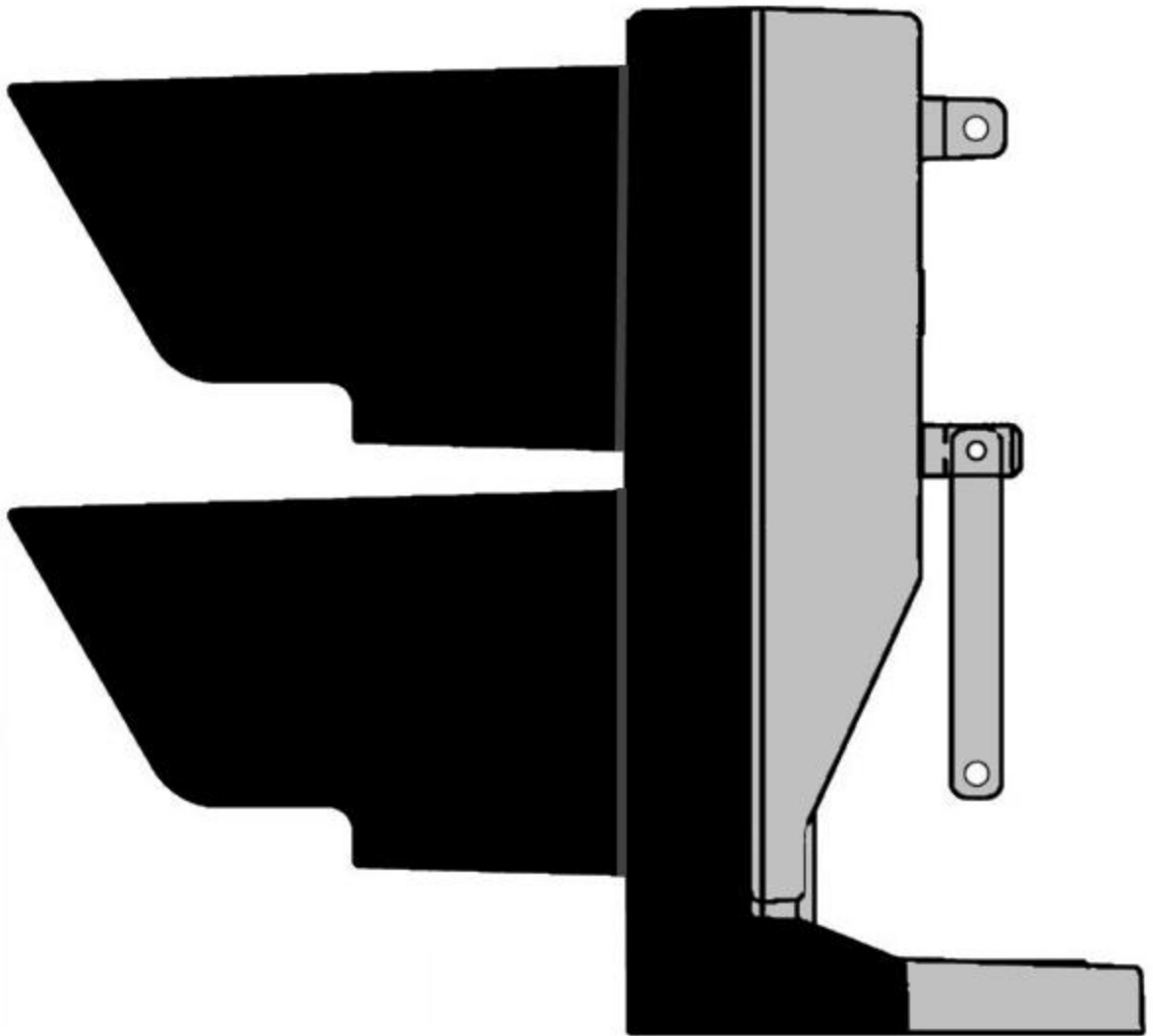


Classic Position Light Signal



Classic Position Light Signal

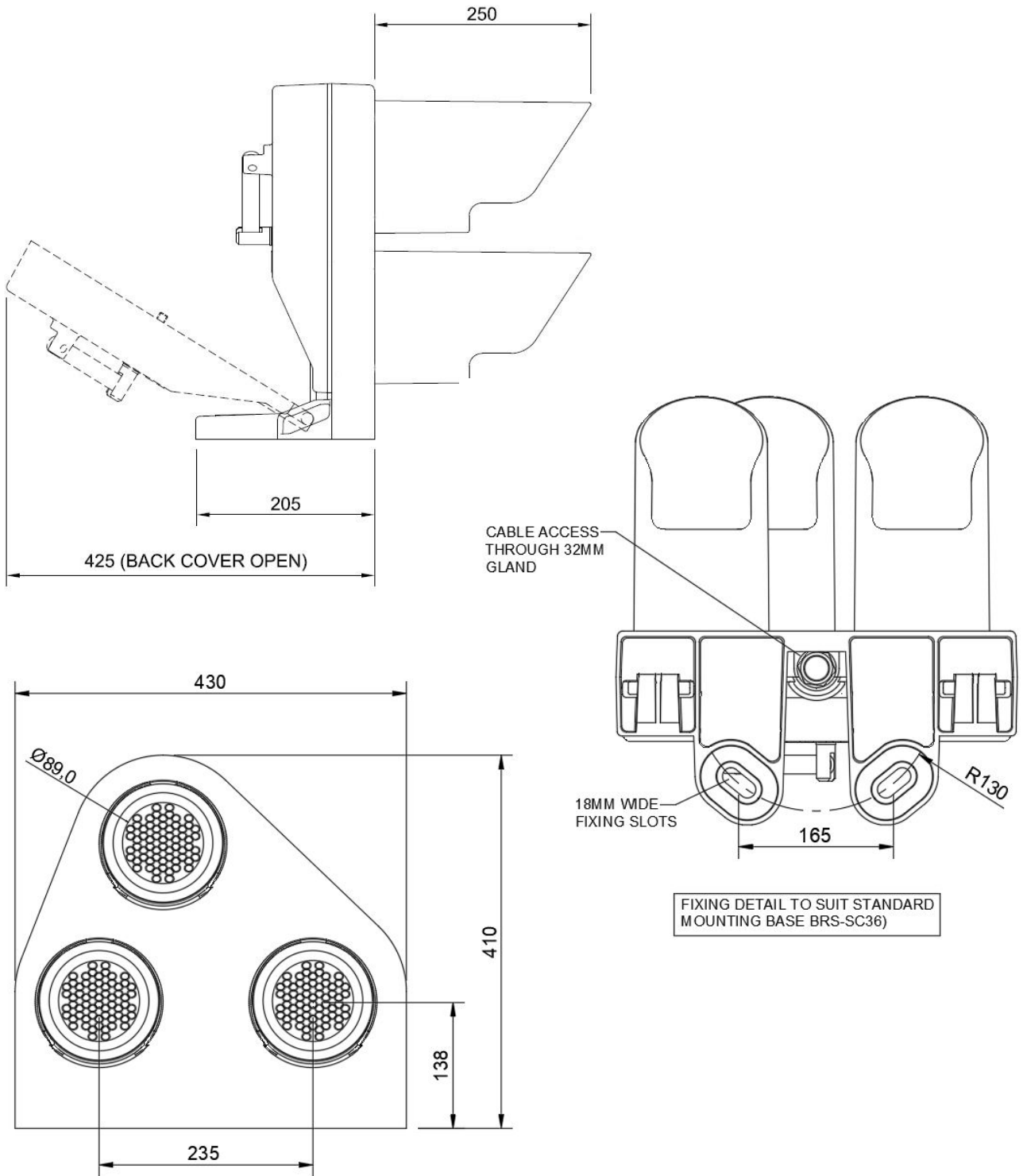
The Classic PLS uses a combination of Signal Lamp Modules (SLM) in a common housing to give a Limit of Shunt, Subsidiary and GPL variants.

When the signal is to be mounted above the driver's eye level (2750mm above the LH running rail) it is classed as an Elevated Signal and below a Ground and this determines the SLM orientation

Performance Characteristics

| Description | |
|--|--|
| Product Approval Certificate | PA05/011136 |
| Nominal Operating Voltage | 110 Vac or 120 Vdc |
| Operating Voltage Range AC | 88-121 V |
| Operating Voltage Range DC | 88-145 V |
| Nominal Operating Current | 300 mA at 110Vac |
| Electrical Connector Type | Free Wired to 2BA Terminal Bar |
| Ingress Protection Rating | IP 65 |
| Operating Temperature Range | -25°C to +40°C |
| Readability | 100m |
| Product Weight | 3 Module Head 20 Kg 2 Module Head 18.4 Kg Module only 1.6Kg |
| For product instructions and dimensioned drawings please visit: | www.unipartdorman.co.uk |

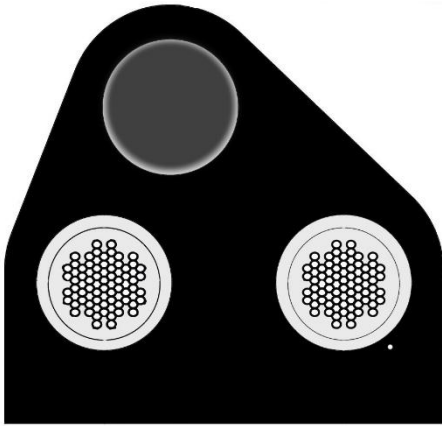
Classic Position Light Signal



Classic Position Light Signal

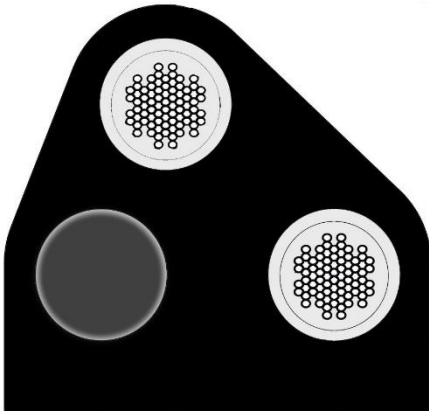
Product Configuration

Each signal variant is configured as shown below:



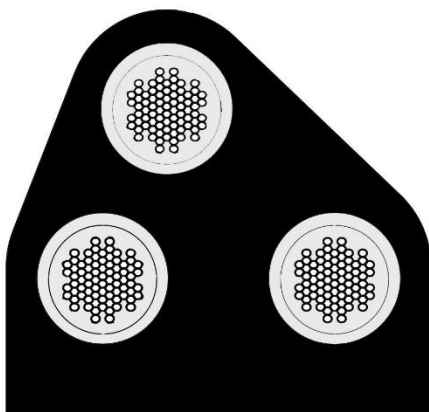
Limit of Shunt

Two Horizontal Red SLMs



Subsidiary Signal

Two White SLMs at a 45° Angle



Position Light Signal

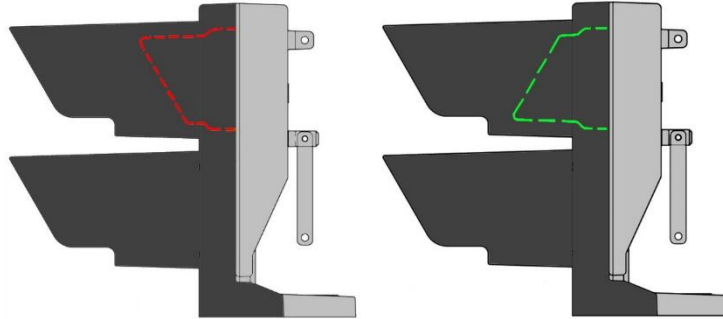
Red SLM in the bottom left position, White SLM in the top position and a 'Pivot' SLM which can show either Red for On indications or White for OFF indications in conjunction with either of the two other SLMs.

Where specified, the red aspect can be replaced with a yellow aspect in this signal

Classic Position Light Signal

Product Configuration

When the signal is installed as a Ground Signal the SLM points downwards and where it is an elevated/overhead signal they point upwards to reduce reflections:



SLM Orientation for Ground Signals

SLM Orientation for Elevated Signals

Elevated/Overhead Signals

| Catalogue Number | Unipart Dorman Part Number | Description |
|------------------|----------------------------|---|
| 0086/001311 | GPL2/RORO/1/P/O | Limit of Shunt Signal Elevated |
| 0086/001307 | GPL2/RWRW/1/P/O | Position Light Signal Red/White Elevated |
| 0086/001309 | GPL2/WOOW/1/P/O | Subsidiary Signal Elevated |
| 0086/001313 | GPL2/YWYW/1/P/O | Position Light Signal Yellow/White Elevated |

Ground Signals

| Catalogue Number | Unipart Dorman Part Number | Description |
|------------------|----------------------------|---|
| 0086/001310 | GPL2/RORO/1/P/G | Limit of Shunt Signal Ground |
| 0086/001306 | GPL2/RWRW/1/P/G | Position Light Signal Red/White Ground |
| 0086/001308 | GPL2/WOOW/1/P/G | Subsidiary Signal Ground |
| 0086/001312 | GPL2/YWYW/1/P/G | Position Light Signal Yellow/White Ground |

Classic Position Light Signal

Spare SLM (Elevated Signals)



| Catalogue Number | Unipart Dorman Part Number | Description |
|------------------|----------------------------|---|
| 0086/001300 | SLM2/R-/1/P/O | Signal Lamp Module proved Red, Elevated |
| 0086/001301 | SLM2/W-/1/P/O | Signal Lamp Module proved White, Elevated |
| 0086/001303 | SLM2/RW/1/P/O | Signal Lamp Module proved Red, White, Elevated |
| 0086/001302 | SLM2/Y-/1/P/O | Signal Lamp Module proved Yellow, Elevated |
| 0086/001304 | SLM2/YW/1/P/O | Signal Lamp Module proved Yellow, White, Elevated |

Spare SLM (Ground Signals)



| Catalogue Number | Unipart Dorman Part Number | Description |
|------------------|----------------------------|---|
| 0086/001294 | SLM2/R-/1/P/G | Signal Lamp Module proved Red, Ground |
| 0086/001295 | SLM2/W-/1/P/G | Signal Lamp Module proved White, Ground |
| 0086/001297 | SLM2/RW/1/P/G | Signal Lamp Module proved Red, White, Ground |
| 0086/001296 | SLM2/Y-/1/P/G | Signal Lamp Module proved Yellow, Ground |
| 0086/001298 | SLM2/YW/1/P/G | Signal Lamp Module proved Yellow, White, Ground |

Out of Use Mask (All Signals)



| Catalogue Number | Unipart Dorman Part Number | Description |
|------------------|----------------------------|-------------|
| 0086/009107 | B22.21084 | OOU Mask |